

**BlackBerry
Torch™**

Start Here
BlackBerry Torch 9800 Smartphone

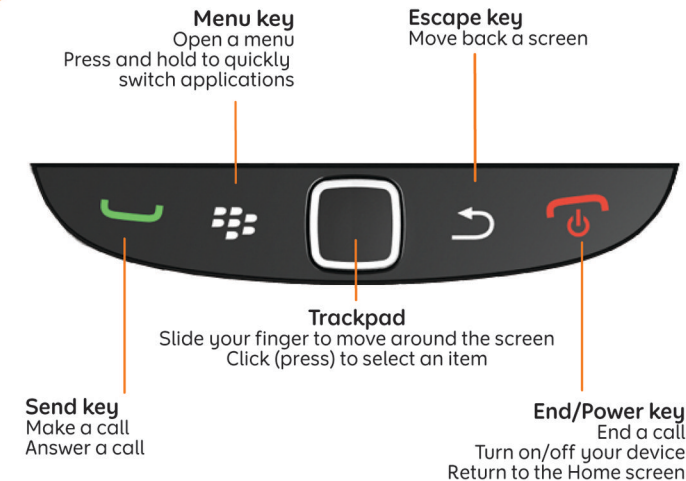


Welcome to BlackBerry!

Get to know your new BlackBerry® Torch™ 9800 smartphone.



Explore the keys



©2010 Research In Motion Limited. All rights reserved. BlackBerry®, RIM®, Research In Motion®, SureType®, SurePress™ and related trademarks, names and logos are the property of Research In Motion Limited and are registered and/or used in the U.S. and countries around the world. Mac is a trademark of Apple Inc. Bluetooth is a trademark of Bluetooth SIG. Hotmail, Windows, Windows Live and Windows Mobile are trademarks of Microsoft Corporation. Palm is a trademark of Palm Trademark Holding Company, LLC. Wi-Fi and Wi-Fi Protected Set-up are trademarks of the Wi-Fi Alliance. All other trademarks are the property of their respective owners. This documentation is provided as is and without condition, endorsement, guarantee, representation or warranty, or liability of any kind by Research In Motion Limited and its affiliated companies, all of which are expressly disclaimed to the maximum extent permitted by applicable law in your jurisdiction.

©2010 Vodafone and the Vodafone logo are trademarks of the Vodafone Group.

MAT-33391-032 | PRINTSPEC-089 | SWD -1137653-0812012021-032 | RY71UW/RDG71UW

Safety information

IT IS IMPORTANT THAT YOU READ THE SAFETY AND PRODUCT INFORMATION BOOKLET (INCLUDED) PRIOR TO USING YOUR BLACKBERRY® DEVICE. It contains essential safety information related to your device.

More tips, interactive demos and videos are online!


For more info, go to www.blackberry.com/gettingstarted.

1 Insert the SIM card and battery

Depending on your BlackBerry® device model or your wireless service provider, you might not need to insert a SIM card to use your device.




2 Charge the battery


If your BlackBerry® device does not turn on automatically, charge the battery or press and hold the  key.



Chargers might vary by region.

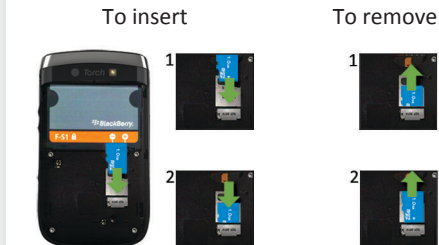
 full battery power

 battery charging

 low battery power

3 Insert a media card

You can use a media card to store more media files. A media card might already be in your BlackBerry® device.



To see a video, on the Home screen, tap the **Set-up** icon and see the **Help & Tutorials** section.

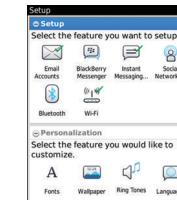
4 Set up your device



Get started quickly with Set-up!

Set-up should appear automatically, but if it doesn't, on the Home screen, tap the **Set-up** icon.

- Set up email addresses and social networking accounts
- Personalise your BlackBerry® device
- Learn about typing and important keys
- Set up wireless and Bluetooth® connections



5 Set up your email

1. If you're in Set-up already, tap the **Email Accounts** icon. If you aren't in Set-up, on the Home screen, tap the **Set-up** icon > **Email Accounts** icon.
2. Follow the screens to set up your email address. When your email address is set up correctly, you receive a confirmation message. To see your email, on the Home screen, click the **Messages** icon.

Note: In some cases, you might see the following options. If so, select one of the options.

- **Internet Mail Account:** Use this option to associate your BlackBerry® device with one or more existing email accounts (for example, Windows Live™ Hotmail®) or to create a new email address for your device.
- **Enterprise Account:** If your administrator gave you an enterprise activation password, use this option to associate your device with your work email account using the BlackBerry® Enterprise Server.

If you are trying to set up a Internet email account (for example, Windows Live™ Hotmail®) or a new email address for your device, and do not see this option, contact your administrator or wireless service provider.

Need help setting up your email?

- On the Home screen, tap the **Set-up** icon. On the **Email Accounts** screen, verify that your email address information is correct.
- Verify with your wireless service provider that your email account type is supported.
- Verify that you have switched devices correctly.

For more info about setting up an email address, go to www.blackberry.com/docs/smartphones and click the link below **Email Set-up**.

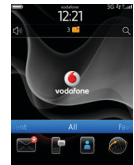
Switch devices

To switch from a BlackBerry® device that has an existing email address and to move your data to a new BlackBerry device, do the following:

1. On your computer, open BlackBerry® Desktop Software 6.0. To get the latest software, go to www.blackberry.com/desktopsoftware.
2. If you have a SIM card, put it into your new device.
3. Connect your new device to your computer.
4. In the dialog box that appears, click **Copy data and settings from another device** and follow the prompts.
5. On your new device, on the **Set-up** screen that appears, tap the **Email Accounts** icon and follow the prompts. If you decline any of the prompts, email won't be sent to your new device. If you're selling or buying a previously owned BlackBerry device that operates on CDMA networks, contact your wireless service provider to switch devices.

To delete data from your previous device, in the BlackBerry Desktop Software, click the **Device** menu > **Delete data**.

Navigation tips



Home screen



More icons on the Home screen

See more icons	Side your finger up
See more views	Slide your finger left or right
Open the pop-up menu	Touch and hold an application icon or item, such as a message

Applications

Get started with some of these great applications.



Messages

Send emails, PIN messages and more.



Text Messages

Send text messages.



Browser

Browse web pages.



Media

See saved pictures, play songs and more.



Camera (if supported)

Take pictures.



Instant Messaging

Chat with friends or colleagues.



Options

Set your device options. You can find more options in each application menu.



Manage Connections

Set up wireless connections, such as a Bluetooth® connection.



Help

Find answers here or tap **Help** in a menu.

To show or hide an icon, highlight the icon using the trackpad. Press the key > **Show All** or **Hide**.

Status indicators

Home screen



new notification



alarm set



unopened message count



BlackBerry® Messenger



calendar reminder count



social feeds



missed call count



sending or receiving data



Wi-Fi® turned on



roaming



GPS turned on

Messages



unopened message



text message



opened message



sent message



message with an attachment



message is sending



message is high priority



message not sent



draft message



meeting invite

Phone



missed call



received call



placed call



voice mail message

Quick tips

Typing on the touch screen

Capitalise a letter

Touch and hold the letter key until the capitalised letter appears or tap the key and the letter key

Insert an at sign (@) or a full-stop (.) in an email address field

Tap the key

Type a symbol

Tap the key

Turn on number lock (NUM lock)

Touch and hold the key until the lock indicator appears on the key

Messages

Move to the top of a message list

On the slide-out keyboard, press

Phone



Change the volume

Press the **Volume** keys on the right side of your BlackBerry® device

For more tips, on the Home screen, tap the **Set-up** icon and see the **Help & Tutorials** section.

Important: When you use your device, take frequent breaks. If you experience discomfort in any part of your body, stop using your device immediately. If the discomfort persists, consult a physician.




Send an email

1. On the Home screen, tap the **Messages** icon.
2. Tap the  icon > **Email**.
3. In the **To** field, type an email address.
4. Type a message.
5. Tap the  icon.


BlackBerry Messenger

Stay connected with friends or colleagues who have a BlackBerry® device. Send instant messages, update your status and create groups so that you can share pictures and appointments with family and friends.

Change your ringtone

1. From the Home screen, press the  key.
2. Press the  key > **Phone Ringtones**.
3. In the **Ringtone** field, tap a preloaded ringtone or tap **All Music**.
4. Press the  key > **Save**.

Download a ringtone

1. On the Home screen, tap the **Media** icon > **Ringtones** icon.
2. Press the  key > **Download Ringtones**.

Additional data charges might apply. For information, contact your wireless service provider. If this feature is not available, you can download ringtones from other websites.



Pair with a Bluetooth® enabled device

You must pair your BlackBerry® device with the Bluetooth® enabled device before you can connect to it. For information about preparing a Bluetooth® enabled device for pairing, see the instructions for that device.

1. On the Home screen, tap the connections area at the top of the screen, or tap the **Manage Connections** icon.
2. Tap **Bluetooth Connections**.
3. If necessary, set the **Bluetooth** field to **On**.
4. Tap **Add New Device** > **Search**.
5. Tap a Bluetooth® enabled device.
6. If necessary, do one of the following:
 - If the Bluetooth® enabled device doesn't have a keyboard, on your BlackBerry device, type the pairing passkey that is in the instructions for the Bluetooth® enabled device.
 - If the Bluetooth® enabled device has a keyboard, type a pairing passkey of your own choosing on both devices.

Browse web pages


Depending on your wireless service provider, your BlackBerry® device might have multiple browsers. For information about the fees associated with each browser, contact your wireless service provider.

1. On the Home screen, tap the **Browser** icon.
2. Type a web address. If a web address field doesn't appear, press the  key > **Go To**.
3. Tap **Go** or the  key.



Tabbed browsing

With the new tabbed browsing feature, you can easily switch between web pages that you have open. For more info, see the Explore poster (included).




Take a picture

1. On the Home screen, tap the **Camera** icon.
2. To zoom in to or out from a subject, slide your finger up or down.
3. Tap the  icon.

Record a video

1. On the Home screen, tap the **Media** icon > **Video Camera** icon.
2. Tap the  icon.
3. To pause recording, tap the  icon.

Change your wallpaper

1. From the Home screen, press the  key.
2. Tap **Options > Change Wallpaper**.
 - To take a picture, tap **Camera**. Tap the **camera** icon.
 - To use an existing picture, tap a category. Tap a picture.
3. Press the  key > **Set As Wallpaper**.
4. Press the  key to return to the Home screen.


Connect using Wi-Fi



1. On the Home screen, tap the connections area at the top of the screen, or tap the **Manage Connections** icon.
2. Tap **Set Up Wi-Fi Network**.
3. If prompted, tap **Turn on Wi-Fi**.
4. If you want to connect to a public hotspot or Wi-Fi® network that does not require a password, select the **Show Open networks only** check box.
5. Tap the Wi-Fi network that you want to connect to.

Download apps and themes

You can download applications, themes and ringtones from your wireless service provider's web site (if available) or from the BlackBerry App World™ storefront.

1. To download a theme, on the Home screen, tap the **Options** icon.
2. Tap **Display > Screen Display**.
3. Press the  key > **Download Themes**.

Your wireless service provider must support this feature.

Additional data charges might apply. For information, contact your wireless service provider.

BlackBerry Desktop Software 6.0

You can use the BlackBerry® Desktop Software to back up and restore BlackBerry device data and sync calendar appointments, music, pictures and more between your device and computer.



To download the BlackBerry Desktop Software, go to www.blackberry.com/desktopsoftware.

Sync your media files

1. Connect your BlackBerry® device to your computer.
2. On your computer, open the BlackBerry® Desktop Software.
 - If you're using a Windows® computer, click **Music, Pictures** or **Videos**.
 - If you're using a Mac computer, in the **Media** section in the left pane, click **Music**. Mac users can sync only music.

For more information, see the Help in the BlackBerry Desktop Software.

Need more help?

- www.blackberry.com/gettingstarted: Find getting started information.
- **Explore poster**: Find touch screen tips.
- **Your wireless service provider web site**: Find information about your wireless network or wireless service plan.
- www.blackberry.com/go/declarationofconformity: View the Declaration of Conformity made under Directive 1999/5/EC (HG nr.88/2003).

CAUTION: Use only those accessories approved by Research In Motion. Using any accessories not approved by RIM for use with this particular device model might invalidate any approval or warranty applicable to the device, might result in the non-operation of the device and might be dangerous.