

# **Nokia X7-00 User Guide**

Issue 1.1

<b>Contents</b>		Download a game, application, or other item	35
<b>Safety</b>	<b>5</b>	<b>Telephone</b>	<b>35</b>
<b>Get started</b>	<b>6</b>	Call a phone number	35
Keys and parts	6	Search for a contact	35
Antenna locations	8	Call a contact	36
Headset	8	Make a conference call	36
Change the volume of a call, song, or video	9	Call the numbers you use the most	37
Lock or unlock the keys and screen	9	Use your voice to call a contact	38
Insert or remove the SIM card	10	Make calls over the internet	39
Insert or remove the memory card	11	Call the last dialed number	39
Charging	13	Record a phone conversation	40
Switch the device on or off	15	Turn to silence	40
Use your device for the first time	16	View your missed calls	40
Copy contacts or pictures from your old device	16	Call your voice mailbox	41
Nokia account and Nokia's Ovi services	17	Forward calls to your voice mailbox or to another phone number	41
Device set-up	17	Prevent making or receiving calls	41
Use the in-device user guide	18	Allow calls only to certain numbers	42
<b>Install Nokia Ovi Suite on your PC</b>	<b>18</b>	Video sharing	43
<b>Basic use</b>	<b>18</b>	<b>Contacts</b>	<b>44</b>
Touch screen actions	18	About Contacts	44
Interactive home screen elements	21	Save phone numbers and mail addresses	45
Switch between open applications	22	Save a number from a received call or message	45
Write text	23	Contact your most important people quickly	45
Display indicators	26	Add a picture for a contact	46
Search in your device and on the internet	27	Set a ringtone for a specific contact	46
Use your device offline	27	Send your contact information using My Card	47
Prolong battery life	28	Create a contact group	47
<b>Personalization</b>	<b>29</b>	Send a message to a group of people	47
Profiles	29	Copy contacts from the SIM card to your device	47
Change your theme	31	Back up your contacts to Ovi by Nokia	48
Home screen	31	<b>Messaging</b>	<b>48</b>
Organize your applications	34	About Messaging	48

Send a message	48	<b>Your pictures and videos</b>	<b>62</b>
Send an audio message	49	About My Videos and My Images	62
Receive messages	49	View pictures and videos	63
View a conversation	50	Edit the pictures you have taken	63
Listen to a text message	51	Video editor	64
Change language	51	Print a picture you have taken	65
<b>Mail</b>	<b>52</b>	<b>Videos</b>	<b>65</b>
Mail	52	About Videos	65
<b>Internet</b>	<b>55</b>	Play a video	65
About the web browser	55	Copy your videos between your device and computer	66
Browse the web	55	<b>Music and audio</b>	<b>66</b>
Add a bookmark	56	Music player	66
Subscribe to a web feed	56	Protected content	68
Unreadable characters while browsing the web	56	Record sounds	69
<b>Social networks</b>	<b>57</b>	FM radio	69
About Social	57	<b>Maps</b>	<b>71</b>
See your friends' status updates in one view	57	Navigate to a destination	71
Post your status to social networking services	58	My position	71
Link your online friends to their contact information	58	Search	75
See your friends' status updates on the home screen	58	Favorites	76
Upload a picture or video to a service	58	Drive and Walk	79
Contact a friend from a social networking service	59	Give feedback on Maps	83
Add an event to your device calendar	59	Report incorrect map information	83
<b>Camera</b>	<b>59</b>	<b>Time management</b>	<b>84</b>
About Camera	59	Clock	84
Take a picture	60	Calendar	86
Save location information to your pictures and videos	60	<b>Office</b>	<b>89</b>
Take a picture in the dark	61	Quickoffice	89
Picture tips	61	Read PDF documents	90
Record a video	61	Make a calculation	90
Send a picture or video	62	Write notes	90
		Translate words from one language to another	91
		Open or create zip files	91
		Access your company intranet	92

<b>Connectivity</b>	<b>92</b>
Internet connections	92
Wi-Fi	93
Bluetooth	94
USB data cable	97
VPN connections	99
Close a network connection	99
Store your files on a remote drive	99
<b>Device management</b>	<b>100</b>
Keep your device software and applications up to date	100
Manage files	101
Increase available memory for more content	103
Manage applications	103
Synchronize content	104
Copy contacts or pictures between devices	106
Protect your device	106
<b>Find more help</b>	<b>107</b>
Support	107
<b>Access codes</b>	<b>108</b>
<b>Troubleshooting</b>	<b>109</b>
If your device stops responding	109
Restore original settings	109
If the device memory is full	109
If the message indicator is blinking	110
If a contact appears twice in the contacts list	110
Unreadable characters while browsing the web	110
Prepare your device for recycling	110
<b>Product and safety information</b>	<b>110</b>
<b>Index</b>	<b>116</b>

## Safety

Read these simple guidelines. Not following them may be dangerous or illegal. Read the complete user guide for further information.

### SWITCH OFF IN RESTRICTED AREAS



Switch the device off when cellular phone use is not allowed or when it may cause interference or danger, for example, in aircraft, near medical equipment, fuel, chemicals, or blasting areas.

### ROAD SAFETY COMES FIRST



Obey all local laws. Always keep your hands free to operate the vehicle while driving. Your first consideration while driving should be road safety.

### INTERFERENCE



All wireless devices may be susceptible to interference, which could affect performance.

### QUALIFIED SERVICE



Only qualified personnel may install or repair this product.

### KEEP YOUR DEVICE DRY



Your device is not water-resistant. Keep it dry.

### GLASS PARTS



The front cover of the device is made of glass. This glass can break if the device is dropped on a hard surface or receives a substantial impact. If the glass breaks, do not touch the glass parts of the device or attempt to remove the broken glass from the device. Stop using the device until the glass is replaced by qualified service personnel.

### PROTECT YOUR HEARING

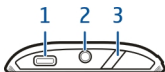



Listen to a headset at a moderate level, and do not hold the device near your ear when the loudspeaker is in use.

## Get started

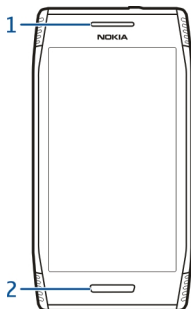
### Keys and parts

#### Top

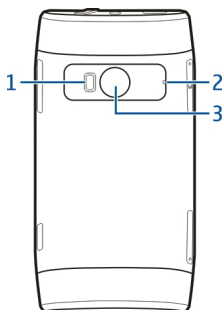


- 1 Micro USB connector
- 2 Nokia AV connector (3.5 mm)
- 3 Power/Unlock/Lock key 

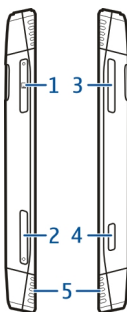
#### Front




- 1 Earpiece
- 2 Menu key

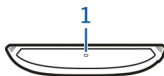
**Back**

- 1 Camera flash
- 2 Microphones
- 3 Camera lens

**Sides**

- 1 Memory card slot
- 2 SIM card slot
- 3 Volume/Zoom key
- 4 Camera key 
- 5 Loudspeaker

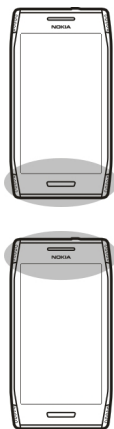
### Bottom



#### 1 Microphone

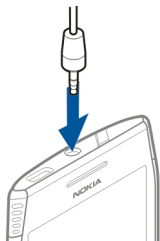
### Antenna locations

Avoid touching the antenna area unnecessarily while the antenna is transmitting or receiving. Contact with antennas affects the communication quality and may cause a higher power level during operation and may reduce the battery life.



### Headset

You can connect a compatible headset or compatible headphones to your device.



### Change the volume of a call, song, or video

Use the volume keys.

You can adjust the volume during a call or when an application is active.

The built-in loudspeaker allows you to speak and listen from a short distance without having to hold the device to your ear.


### Activate or deactivate the loudspeaker during a call

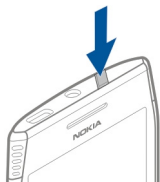
Select  or .

### Lock or unlock the keys and screen


To avoid accidentally making a call when your device is in your pocket or bag, lock the keys and screen of your device.

#### Lock the keys and screen

Press the power key .



#### Unlock the keys and screen

Press the power key  or the menu key, and select **Unlock**.

### Set the keys and screen autolock delay

- 1 Select **Menu > Settings and Phone > Display > Screen/keylock time-out.**
- 2 Define how long your device waits before the screen and keys lock automatically.

### Insert or remove the SIM card

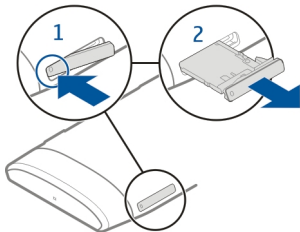
**!** **Important:** Do not use a mini-UICC SIM card, also known as a micro-SIM card, a micro-SIM card with an adapter, or a SIM card that has a mini-UICC cutout (see figure) in this device. A micro-SIM card is smaller than the standard SIM card. This device does not support the use of micro-SIM cards and use of incompatible SIM cards may damage the card or the device, and may corrupt data stored on the card.



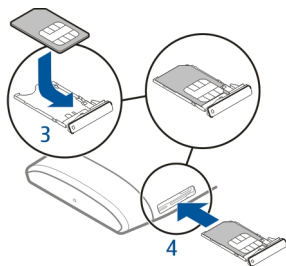
Do not attach any stickers to your SIM card.

### Insert the SIM card.

- 1 Press open the cover of the SIM card slot.
- 2 Pull out the SIM card holder.

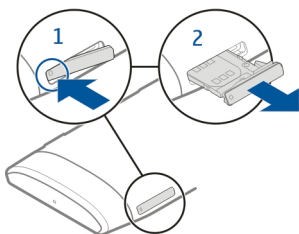


- 3 Make sure the contact area is facing up, and place the SIM card in the holder.
- 4 Insert the SIM card holder back into the device.



### Remove the SIM card

- 1 Press open the cover of the SIM card slot.
- 2 Pull out the SIM card holder.
- 3 Remove the SIM card.



### Insert or remove the memory card

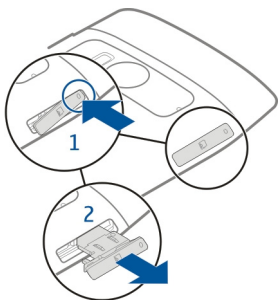
Use only compatible memory cards approved by Nokia for use with this device. Incompatible cards may damage the card and the device and corrupt data stored on the card.



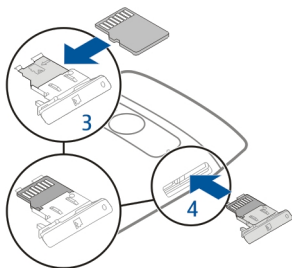
Do not attach any stickers to your memory card.

### Insert the memory card

- 1 Press open the cover of the memory card slot.
- 2 Pull out the memory card holder.

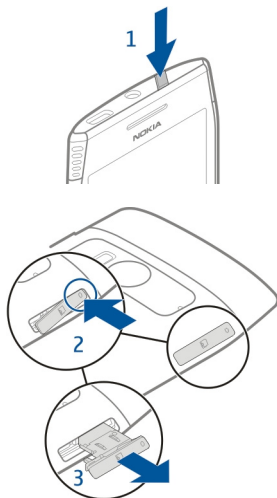


- 3 Make sure the contact area is facing up, and insert the memory card into the holder.
- 4 Insert the memory card holder back into the device.



### Remove the memory card

- 1 If your device is switched on, first press and hold the power key, and select **Remove memory card**.
- 2 Press open the cover of the memory card slot.
- 3 Pull out the memory card holder.
- 4 Remove the memory card.



## Charging

### About the battery

Your device has an internal, nonremovable, CTIA 1725-certified rechargeable battery. Use only Nokia approved chargers designated for this device. You can also use a compatible USB data cable to charge your device.

Do not attempt to remove the battery from the device. Take the device to the nearest authorized service facility for replacement of the battery.

You can use USB charging when a wall outlet is not available. Data can be transferred while charging the device. The efficiency of USB charging power varies significantly, and it may take a long time for charging to start and the device to start functioning.

Only connect your device to products that have a USB-IF logo or have completed the USB-IF compliance program.

Authorized retail points may also offer a battery replacement service.

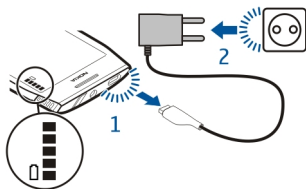
When your device is low on power, it goes into power save mode. To turn power save mode off, press and hold the power key, and select **Deactivate power saving**. When power save mode is activated, you may not be able to edit the settings of certain applications.

### Charge the battery

Your battery has been partially charged at the factory, but you may need to recharge it before you can switch on your device for the first time.

If the device indicates a low charge, do the following:

- 1 Connect the charger to a wall outlet.
- 2 Connect the charger to the device.
- 3 When the device indicates a full charge, disconnect the charger from the device, then from the wall outlet.

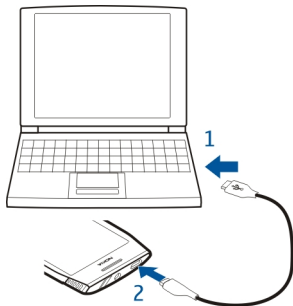


You do not need to charge the battery for a specific length of time, and you can use the device while it is charging.

If the battery is completely discharged, it may take several minutes before the charging indicator appears on the display or before any calls can be made.

If the battery has not been used for a long time, to begin charging, you may need to connect the charger, then disconnect and reconnect it.

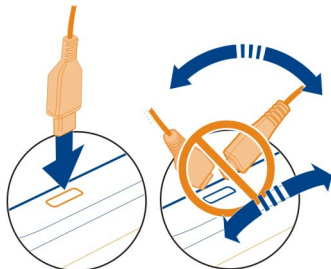
**Tip:** You can also use a compatible USB charger to charge your battery.



## Charge the battery over USB

Battery low, but you don't have a charger with you? You can use a compatible USB cable to connect to a compatible device, such as a computer.

To avoid breaking the charger connector, be careful when connecting or disconnecting the charger cable.




If connected to a computer, you can synchronize your device while charging.


Charging over USB can take longer to start, and may not work if you connect through a non-powered USB hub. Your device charges more quickly when connected to a wall outlet.

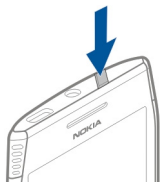
## Switch the device on or off

### Switch on

Press and hold the power key  until the device vibrates.

### Switch off

Press and hold the power key , and select **Switch off!**.



### Use your device for the first time

Your device guides you through the initial setup when you insert your SIM card and switch your device on for the first time. To use all of Nokia's Ovi services, create a Nokia account. You can also copy your contacts and other content from your previous device, and subscribe to receive helpful tips and tricks.

To create a Nokia account, you need an internet connection. For information about data transmission charges, contact your service provider. If you can't connect to the internet, you can create an account later.

**Tip:** To create and manage your Nokia account on the internet, go to [www.ovi.com](http://www.ovi.com).

If you already have a Nokia account, sign in.

**Tip:** Forgotten your password? You can request it to be sent to you in a mail or text message.

Use the Phone switch application to copy your content, such as:

- Contacts
- Messages
- Pictures and videos
- Personal settings

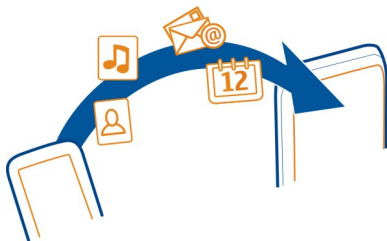
When you set up your mail account, you can set your inbox to be displayed on your home screen, so you can easily check your mail.

If you need to make an emergency call during the setup phase, press the menu key.

### Copy contacts or pictures from your old device

Want to copy important information from your previous compatible Nokia device and start using your new device quickly? Use the Phone switch application to copy, for example, contacts, calendar entries, and pictures to your new device, free of charge.

Select **Menu > Applications > Tools > Phone setup and Data transfer**.



If your old Nokia device does not have the Phone switch application, your new device sends it in a message. Open the message in the old device, and follow the instructions.

- 1 Select the device you want to connect to, and pair the devices. Bluetooth needs to be activated.
- 2 If the other device requires a passcode, enter the passcode. The passcode, which you can define yourself, must be entered in both devices. The passcode in some devices is fixed. For details, see the user guide of the device.  
The passcode is valid only for the current connection.
- 3 Select the content and **OK**.

### Nokia account and Nokia's Ovi services

When you switch on your device for the first time, you are prompted to create or sign in to a Nokia account, so you can access Nokia's Ovi services.

With Ovi services, you can:

- See your friends' statuses in different social networking services
- Download games, applications, videos, pictures, themes, and ringtones from Ovi Store
- Get to where you want to go with free walk and drive navigation
- Back up and manage your contacts in the Ovi internet service

To learn more about Ovi services, go to [www.ovi.com](http://www.ovi.com).

### Device set-up

To define some basic settings for your device, select **Menu > Applications > Tools > Phone setup**. With the Phone set-up widget, you can do the following:

- Copy contacts, pictures, and other content from your previous Nokia device
- Customize your device by changing the ringtone and visual theme

## 18 Install Nokia Ovi Suite on your PC

---

- Set up mail
- Update your device software

### Use the in-device user guide

 Select Menu > Applications > User guide.

#### Open the user guide from an application


Select **Options** > **User guide**. This is not available for every application.

#### Search the user guide

When the user guide is open, select **Options** > **Search**, and enter a letter or a word in the search field.

#### Switch between the user guide and an application

Press and hold the menu key, swipe left or right, and select the desired application.

 indicates a link to a web page. Links to related topics may be at the end of instructions.

## Install Nokia Ovi Suite on your PC

With the Nokia Ovi Suite PC application, you can manage content on your device, and keep it in sync with your compatible computer. You can also update your device with the latest software, and download maps.

Download the latest version of Nokia Ovi Suite from [www.ovi.com/suite](http://www.ovi.com/suite) to your computer.

To learn more about Nokia Ovi Suite, go to [www.ovi.com/suite](http://www.ovi.com/suite).

To check which operating systems Nokia Ovi Suite supports, go to [www.nokia.com/support](http://www.nokia.com/support).

## Basic use

### Touch screen actions

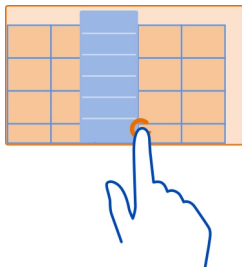
To interact with the user interface, tap or tap and hold the touch screen.

#### Open an application or other screen element

Tap the application or element.

### Access functions quickly

Tap and hold the item. A pop-up menu with available options opens. For example, to send an image or delete an alarm, tap and hold the image or alarm, and from the pop-up menu, select the appropriate option.



If you tap and hold the home screen, editing mode is activated.



### Drag an item



Tap and hold the item, and slide your finger across the screen. The item follows your finger.

You can drag items in the home screen or the main menu, when you have activated editing mode.

### Swipe



Place a finger on the screen, and steadily slide your finger in the desired direction. For example, when you are viewing a picture, to view the next picture, swipe left.

### Scroll in a list or menu

Place your finger on the screen, slide it quickly up or down the screen, then lift your finger. The content of the screen scrolls with the speed and direction it had at the moment of release. To select an item from a scrolling list and to stop the movement, tap the item.



### Zoom in

Place two fingers on an item, such as a picture or web page, and slide your fingers apart.



### Zoom out

Place two fingers on the item, and slide your fingers together.

**Tip:** You can also tap the item twice to zoom in or out.

### Interactive home screen elements

The home screen elements are interactive. For example, you can change the date and time, set alarms, write calendar entries, or edit the profiles directly on the home screen.



### **Set an alarm**

Select the clock (1).

### **Activate or edit profiles**

Select the profile (2).

### **View or edit your schedule**

Select the date (3).


### **View missed calls or unread messages**

Select the notification area (4).

### **View available Wi-Fi networks or manage Bluetooth connections**

Select the notification area (4).

### **Edit the connectivity settings**

Select the notification area (4) and .

In most other views, you can select the notification area (4), and do the following:

- Edit the connectivity settings
- Open the clock, and set an alarm
- View the battery status, and activate power saving mode
- View notifications of missed calls or unread messages
- Open the Wi-Fi wizard, and connect to a Wi-Fi network
- Manage Bluetooth connections

### **Switch between open applications**

You can see which applications and tasks are open in the background, and switch between them.

Press and hold the menu key, swipe left or right, and select the desired application.



Applications running in the background increase the demand on battery power and use memory. To close an application that you are not using, select .

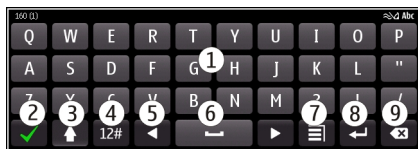
**Tip:** To close all open applications, select and hold the task switcher, and from the pop-up menu, select **Close all**.

## Write text

### Enter text with the virtual keyboard

#### Activate the virtual keyboard.

To activate the virtual keyboard, select a text input field. You can use the virtual keyboard both in landscape and portrait mode.



- 1 Virtual keyboard
- 2 Close key - Close the virtual keyboard.
- 3 Shift and caps lock key - To enter an upper case character when writing in lower case, or vice versa, select the key before entering the character. To activate caps lock mode, select the key twice. A line under the key indicates that caps lock mode is activated.
- 4 Character range - Select the desired character range, such as numbers or special characters.
- 5 Arrows keys - Move the cursor left or right.
- 6 Space bar - Insert a space.
- 7 Input menu - Activate predictive text input, or change the writing language.

- 8 Enter key - Move the cursor to the next row or text input field. Additional functions are based on the current context. For example, in the web address field of the web browser, it acts as the Go icon.
- 9 Backspace key - Delete a character.

### Switch between the virtual keyboard and keypad in portrait mode

Select  > **Alphanumeric keypad** or **Full screen QWERTY**.

### Add an accent to a character

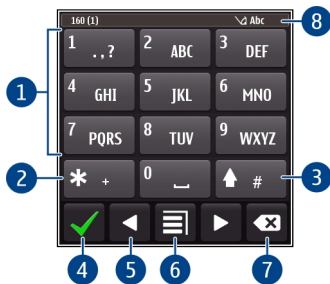
Select and hold the character.

### Enter text with the virtual keypad

#### Use the virtual keypad

If you prefer to use the alphanumeric keypad when writing in portrait mode, you can switch from the virtual keyboard to the virtual keypad.

- 1 Select a text input field.
- 2 Select  > **Alphanumeric keypad**.



- 1 Number keys
- 2 \* - Enter a special character, or when predictive text input mode is activated and the word underlined, cycle through the word candidates.
- 3 Shift key - Change the character case. To activate or deactivate predictive text input mode, quickly select the key twice. To switch between the letter and number modes, select and hold the key.
- 4 Close key - Close the virtual keypad.
- 5 Arrow keys - Move the cursor left or right.
- 6 Input menu - Activate predictive text input, change the writing language, or switch to the virtual keyboard.
- 7 Backspace key - Delete a character.

- 8 Text input indicator (if available) - Indicates the character case, and if letter or number mode or predictive text input mode is activated.

---

### Activate traditional text input with the virtual keypad

Quickly select # twice.

#### Enter a character

- 1 Select a number key (1-9) repeatedly, until the desired character is displayed. There are more characters available than are visible on the key.
- 2 If the next letter is located on the same key, wait until the cursor is displayed or move the cursor forward, and select the key again.

#### Insert a space

Select 0.


#### Move the cursor to the next line

Quickly select 0 three times.

---

### Activate predictive text input with the virtual keypad

Predictive text input is based on a built-in dictionary to which you can add new words. Predictive text input is not available for all languages.

- 1 Select  > **Activate predictive text**.
- 2 To write the desired word, use the keys 2-9. Select each key once for each letter. For example, to write Nokia when the English dictionary is selected, select 6 for N, 6 for o, 5 for k, 4 for i, and 2 for a.  
The word suggestion changes after each key selection.
- 3 If the word is not correct, select \* repeatedly, until the correct match is displayed. If the word is not in the dictionary, select **Spell**, and enter the word using traditional text input mode, and select **OK**.  
If ? is displayed after the word, the word is not in the dictionary. To add a word to the dictionary, select \*, enter the word using traditional text input mode, and select **OK**.
- 4 To insert a space, select 0. To insert a common punctuation mark, select 1, and then select \* repeatedly, until the correct punctuation mark is displayed.
- 5 Start writing the next word.

#### Deactivate predictive text input

Quickly select # twice.

**Define the writing language**

Select **Menu > Settings and Phone > Touch input > Writing language.**

**Change the language when writing**

Select  > **Input options > Writing language** or  > **Writing language.**

Available options may vary.

**Display indicators****General indicators**

The touch screen and keys are locked.



The device alerts silently for incoming calls or messages.



An alarm is set.



A timed profile is activated.



You have a missed calendar event.

**Call indicators**

Someone has tried to call you.



You are using your second phone line (network service).



Incoming calls are diverted to another number (network service). If you have two phone lines, a number indicates the active line.



Your device is ready for an internet call.

**Messaging indicators**

You have unread messages. If the indicator is blinking, your Inbox folder may be full.



Messages are waiting to be sent in the Outbox folder.


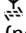
**Network indicators**

Your device is connected to a GSM network (network service).

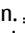
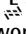


Your device is connected to a 3G network (network service).

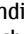



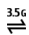


A GPRS data connection (network service) is open.  indicates that the connection is on hold and  that a connection is opening or closing.






An EGPRS data connection (network service) is open.  indicates that the connection is on hold and  that a connection is being established.





A 3G data connection (network service) is open.  indicates that the connection is on hold and  that a connection is being established.

 An HSPA data connection (network service) is open.  indicates that the connection is on hold and  that a connection is being established.


 A Wi-Fi connection is available.  indicates that the connection is encrypted and  that the connection is not encrypted.


## Connectivity indicators


 Bluetooth is active.  indicates that your device is sending data. If the indicator is blinking, your device is trying to connect to another device.


 A USB cable is connected to your device.

 GPS is active.


 The device is synchronizing.

 A compatible headset is connected to your device.


 A compatible TV-out cable is connected to your device.

 A compatible text phone is connected to your device.

## Search in your device and on the internet

 With the Search application, you can find any item in your device.

- 1 Select **Menu** > **Applications** > **Search**.
- 2 Enter a search word in the search field, or browse the content categories.

**Tip:** You can add a search widget to the home screen. With the search widget, you can also search the internet. Tap and hold the home screen, and select  and the search widget from the list.

## Use your device offline

In places where you do not want to make or receive calls, you may still access your calendar, contacts list, and offline games if you activate the offline profile. Switch the device off when cellphone use is not allowed or when it may cause interference or danger.

On the home screen, select the profile and **Offline**.

When the offline profile is activated, your connection to the cellular network is closed. All radio frequency signals between the device and the cellular network are prevented. If you try to send a message, it is placed in the Outbox folder, and is sent only when another profile is activated.

You can also use your device without a SIM card. Switch the device off, and remove the SIM card. When you switch back on, the offline profile is activated.



When the offline profile is activated, you can still connect to a Wi-Fi to, for example, read your mail or browse the internet. You can also use Bluetooth. Remember to comply with any applicable safety requirements when you establish and use Wi-Fi or Bluetooth connections.

### **Prolong battery life**


If it seems you're always looking for a charger, there are steps you can take to reduce the power consumption of your device.

- Always charge the battery fully.
- When power saving mode is activated, device settings, such as **Network mode** and the screen saver, are optimized.

### **Activate power saving mode**

Press and hold the power key , and select **Activate power saving**. To deactivate power saving mode, press and hold the power key , and select **Deactivate power saving**.

### **Close the applications you are not using**

Press and hold the menu key, swipe until the desired application is displayed, and select .

### **Sounds, themes, and effects**

---

- Mute unnecessary tones, such as keypad tones.
- Use wired headphones, rather than the loudspeaker.
- Change the length of the time-out period after which the device display switches off.

### **Set the length of the time-out period**

Select **Menu > Settings and Phone > Display > Light time-out**.

### **Activate a dark theme and wallpaper**

Select **Menu > Settings and Themes > General**. To change the wallpaper, on the home screen, select **Options > Change wallpaper**.

### **Deactivate background animation effects**

Select **Menu > Settings and Themes > General > Options > Theme effects > Off**.

### **Decrease the brightness of the display**

Select **Menu > Settings and Phone > Display > Brightness**.

## Deactivate the Big clock screen saver

Select Menu > Settings and Themes > Screen saver > None.

## Network use

- If you are listening to music or otherwise using your device, but do not want to make or receive calls, activate the offline profile.
- Set your device to check for new mail less frequently.
- Use a Wi-Fi connection to connect to the internet, rather than a packet data (GPRS or 3G) connection.
- If your device is set to use both GSM and 3G networks (dual mode), the device uses more power when searching for the 3G network.

## Set your device to use only the GSM network

Select Menu > Settings and Connectivity > Network > Network mode > GSM.

## Deactivate Bluetooth when not needed

Select Menu > Settings and Connectivity > Bluetooth > Bluetooth > Off.

## Stop your device scanning for available Wi-Fi networks

Select Menu > Settings and Connectivity > Wi-Fi > Options > Settings > Show Wi-Fi availability > Never.

## Establish a packet data (3G or GPRS) connection only when needed

Select Menu > Settings and Connectivity > Admin. settings > Packet data > Packet data connection > When needed.

# Personalization

## Profiles

### About profiles

 Select Menu > Settings > Tone profiles.

Waiting for a call but can't let your phone ring? Your device has various settings groups called profiles, which you can customize for different events and environments. You can also create your own profiles.

You can customize the profiles in the following ways:

- Change the ringtone and message alert tones.
- Adjust the volume of the ringtone and key tones.
- Mute key tones and notification tones.

- Activate vibration alerts.
- Set the device to say the name of the contact who is calling.

### Customize your tones

You can customize your device tones for each profile.

Select **Menu > Settings > Tone profiles**.

- 1 Select the desired profile.
- 2 Select **Customize** and the desired option.

**Tip:** Download ringtones from Ovi Store. To learn more about Ovi Store, go to [www.ovi.com](http://www.ovi.com).

### Silence your device

When the silent profile is activated, all ringtones and alert tones are muted. Activate this profile when you are at the movies or in a meeting.

On the home screen, select the profile and **Silent**.

### Change your profile for meetings or outdoor use

When the meeting profile is activated, your device discreetly beeps once instead of ringing. When the outdoor profile is activated, the ringing tone is louder, so you won't miss a call in a noisy environment.

In the home screen, select the profile and **Meeting or Outdoor**.

### Create a new profile

How can you make your device meet your needs at work or college or home? You can create new profiles for different situations, and give them appropriate names.

- 1 Select **Menu > Settings > Tone profiles and Options > Create new**.
- 2 Define your profile settings, and select **Profile name**.
- 3 Enter a name for the profile.

### Set a timed profile

You can activate a profile until a set time, after which the previously used profile is activated.

Select **Menu > Settings > Tone profiles**.

- 1 Select the desired profile and **Timed**.
- 2 Set the time that you want the timed profile to expire at.

## Change your theme



With themes, you can change the colors and look of your display.

Select **Menu** > **Settings** > **Themes**.

Select **General** and a theme.

Some themes include background animation effects. To save battery power, select **General** > **Options** > **Theme effects** > **Off**.

**Tip:** Download themes from Nokia's Ovi Store. To learn more about Ovi Store, go to [www.ovi.com](http://www.ovi.com).

## Home screen

### About the home screen

On the home screen, you can:

- See notifications of missed calls and received messages
- Open your favorite applications
- Control applications, such as the music player
- Add shortcuts for different features, such as writing a message
- View your favorite contacts, and quickly call, chat, or send messages to them

You can have more than one home screen page, for example, separate home screens for work and private life.

The home screen elements are interactive. For example, if you select the clock, the clock application opens.

### Switch between home screens

You can have more than one home screen. For example, create separate home screens for work and private life, and customize them to have different content.

To switch to another home screen, swipe left or right.



● ● ● indicates which home screen you are in.

### Customize the home screen

Want to see your favorite landscape or pictures of your family in the home screen background? You can change this wallpaper, and rearrange items in the home screen, to customize it to your liking.

**Tip:** If you have more than one home screen, you can switch between them also while editing, and customize all your home screens at the same time.

#### Change the wallpaper

- 1 Tap and hold the home screen.
- 2 Select **Options** > **Change wallpaper** > **Image**.
- 3 Select the desired picture.
- 4 Select **Done**.

**Tip:** Download more background images from Nokia's Ovi Store. To learn more about Ovi Store, go to [www.ovi.com](http://www.ovi.com).

#### Rearrange items in the home screen


- 1 Tap and hold the home screen.
- 2 Drag and drop items to a new location.



- 3 Select **Done**.

### Add a widget to the home screen

Interested in today's weather or what's currently in the news? You can add mini-applications (widgets) to your home screen, and see your most relevant information at a glance.

- 1 Tap and hold the home screen.
- 2 Select  and the desired widget from the list.
- 3 Select **Done**.

A widget can enhance the related application, and may also change the way the application works. For example, if you add a notification widget, received messages are notified in the widget.

**Tip:** To download more widgets, select **Store**.

Using the service or downloading content may cause transfer of large amounts of data, which may result in data traffic costs.

Some home screen widgets may connect to the internet automatically. To prevent this, select **Options > Widgets to offline mode**.

### Remove a widget from the home screen

- 1 Tap and hold the home screen.
- 2 Select the widget, and from the pop-up menu, select **Remove**.
- 3 Select **Done**.

### Add a shortcut to the home screen

Did you know that you can create shortcuts to your most used applications and features? You can add shortcuts to applications, web bookmarks, or actions, such as writing a message.

## 34 Personalization

---

- 1 Tap and hold the home screen.
- 2 Select the shortcut widget and **Settings**.
- 3 Select the shortcut you want to define, and select **Bookmark** or **Application** and the desired item.
- 4 Select **Back** > **Done**.


**Tip:** To remove a shortcut, replace it with another one.

**Tip:** If you add empty shortcut widgets when editing a home screen, you can later define the shortcuts directly on the home screen.

### Add your important contacts to the home screen

Add your most important contacts to the home screen, so you can quickly call or send messages to them.


The contacts need to be stored in your device memory.

- 1 In the Favorite contacts widget, select .
- 2 To mark the contacts to add to the home screen, select the desired contacts. You can add up to 20 contacts to the widget.

### Call or send a message to a contact

In the widget, select the contact.

### Remove a contact from the home screen

In the widget, select  and the contact to remove. The contact is deleted from the widget, but remains in your contacts list.

### Organize your applications

Want to open your most used applications more quickly? In the main menu, you can organize your applications and hide less used applications in folders.

Press the menu key, and select **Options** > **Organize**.

#### Create a new folder

Select **Options** > **New folder**.

#### Move an application to a folder

Select and hold the application, and from the pop-up menu, select **Move to folder** and the new folder.

**Tip:** You can also drag and drop applications and folders.

## Download a game, application, or other item

You can buy games, applications, videos, and other content from Ovi Store. There are also free items that you can download.

Select **Menu** > **Store**, and sign in to your Nokia account.

- 1 Select the item.
- 2 If the item has a price, select **Buy**. If the item is free, select **Download**.
- 3 You can pay with a credit or debit card, or, if available, on your phone bill.  
To save your card information to your Nokia account, select **Save this card to my Nokia account**.  
If your card information is already saved, to use a different payment method, select **Change billing details**.
- 4 To get a receipt of your purchase, select or enter a mail address.
- 5 Select **Confirm**.
- 6 When the download is complete, you can open or view the item, or continue browsing for more content. The content type determines where the item is stored in your cellular phone.



**Tip:** Use a Wi-Fi connection to download larger files, such as games, applications, or videos.

For more information on an item, contact the publisher of the item.

**Tip:** To avoid entering your payment card details over and over when buying items from Ovi Store, save your details to your Nokia account. You can add more than one payment card, and choose which one to use when buying.

## Telephone

### Call a phone number

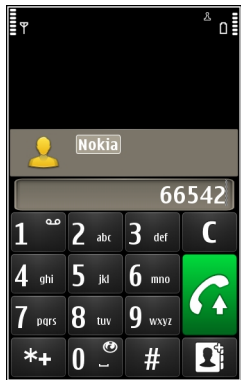
- 1 To open the dialer, on the home screen, select **Call**, and enter the phone number.  
To enter the + character, used for international calls, select \* twice. The character + as a replacement for the international access code may not work in all regions. In this case, enter the international access code directly.
- 2 To make the call, select .
- 3 To end the call, select .

### Search for a contact

You can search for a contact you have saved in the contacts list.

In the home screen, select **Call**, and start entering the contact's first or second name. You can also search by company name. When entering the characters, select each

number key once for each letter. For example, to search for Nokia, enter **6, 6, 5, 4,** and **2.**



### Call the found contact

Select and hold the contact, and in the contact card, select **Voice call**.

### Send a message to the contact

Select and hold the contact, and in the contact card, select **Message**.

### Turn contact search off

Select **Options > Contact search > Off**.

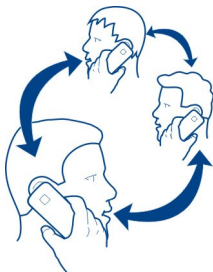
### Call a contact


Select **Menu > Contacts**.

- 1 To search for a contact, enter the first letters or characters of the first or second name in the search field.
- 2 Select the contact.
- 3 In the contact card, select **Voice call**.
- 4 If the contact has more than one phone number, select and hold **Voice call**, and select the desired number.

### Make a conference call

Your device supports conference calls (network service) between a maximum of six participants, including yourself. Video conference calls are not supported.



- 1 Make a call to the first participant.
- 2 To make a call to another participant, select **Options** > **New call**. The first call is put on hold.
- 3 When the new call is answered, to add the first participant to the conference call, select .

### **Add a new participant to a conference call**

Make a call to another participant, and add the new call to the conference call.

### **Have a private conversation with a conference call participant**

Select .

Go to the participant, and select . The conference call is put on hold on your device. The other participants continue the conference call.

To return to the conference call, select .

### **Drop a participant from a conference call**

Select , go to the participant, and select .

### **End an active conference call**

Press the end key.

## **Call the numbers you use the most**

You can quickly call your friends and family when you assign your most-used phone numbers to the number keys of your device.

Select **Menu** > **Settings and Calling** > **1-touch dialing**.

### **Assign a phone number to a number key**

- 1 Select the number key to which you want to assign the phone number.

- 1 is reserved for the voice mailbox.
- 2 Select the desired number from the contacts list.

### **Remove or change a phone number assigned to a number key**

Select and hold the assigned key, and from the pop-up menu, select **Remove or Change**.

### **Make a call**

In the home screen, select **Call** to open the dialer, and select and hold the assigned number key.

### **Use your voice to call a contact**

With the Voice commands application you can use your voice to make calls or control your device.

Voice commands are not dependent on the speaker's voice. Commands are automatically created by your device.

**!** **Note:** Using voice tags may be difficult in a noisy environment or during an emergency, so you should not rely solely upon voice dialling in all circumstances.

When you use voice dialling, the loudspeaker is in use. Hold the device at a short distance away when you say the voice command.

- 1 In the home screen, select and hold **Call**. If a compatible headset with the headset key is attached, press and hold the headset key.
- 2 A short tone sounds, and **Speak now** is displayed. Say clearly the name that is saved for the contact.
- 3 The device plays a synthesized voice command for the recognized contact in the selected device language, and displays the name and number. To cancel the voice dialling, select **Quit**.

### **Listen to a voice command for a contact**

- 1 Select a contact and **Options** > **Voice tag details**.
- 2 Select a contact detail.

If several numbers are saved for a name, you can say also the name and the number type, such as cellular phone or telephone.

## Make calls over the internet

### About internet calls

With the internet call network service, you can make and receive calls over the internet. Internet call services may support calls between computers, between cellular phones, and between a VoIP device and a traditional telephone.

Some internet call service providers allow free internet calls. For availability and connectivity costs, contact your internet call service provider.

To make or receive an internet call, you must be in the service area of a Wi-Fi or have a packet data (GPRS) connection in a 3G network, and be signed in to an internet call service.

### Install an internet call service

You can search for internet call services from Ovi Store. For details, go to [www.ovi.com](http://www.ovi.com).

- 1 Download an installation widget for the internet call service.
- 2 To start the installation, select the installation widget.
- 3 Follow the displayed instructions.

When an internet call service has been installed, a tab for the service is displayed in the contacts list.

### Make an internet call.

When you are signed into a internet call service, you can make a call from the friends list or the contacts list.

Select **Menu** > **Contacts**.

#### Call a contact in the friends list

- 1 Open the internet call service tab, and sign in to a internet call service.
- 2 Select a contact from the friends list, and select **Internet call**.

#### Make an internet call to a phone number or SIP address

- 1 Select **Call**.
- 2 Select **Options** > **Call** > **Internet call**.



### Call the last dialed number

Trying to call someone, but they are not answering? It is easy to call them again. In the call log, you can see information about the calls you have made and received.

On the home screen, select **Call** > .

To call the last dialed number, select the number from the list.

### Record a phone conversation

- 1 During an active voice call, select **Options** > **Go to Home screen**, and then select **Menu** > **Applications** > **Office** > **Recorder**.
- 2 To start recording, select .
- 3 To stop recording, select . The sound clip is automatically saved to the Sound files folder in the File manager application.

Both parties hear a tone at regular intervals during the recording.

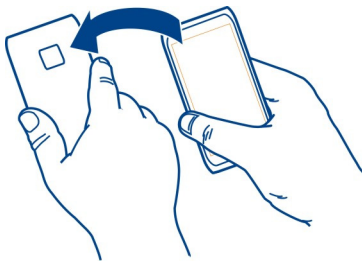
### Turn to silence

If your device rings in a situation where you do not want to be disturbed, you can turn the device to silence the ringtone.

#### Activate the turn to silence feature

Select **Menu** > **Settings and Phone** > **Sensor settings** > **Silence calls** > **On**.

When your device rings, turn your device display down.





### View your missed calls

On the home screen, you can see when you have missed calls. To view the phone number, select **Show**. The caller's name is displayed if stored in the contacts list.

Missed and received calls are logged only if supported by the network, and the device is switched on and within the network service area.

#### Call back the contact or number

Select the contact or number.

To view the missed calls list later, on the home screen, select **Call** to open the dialer, select , and open the missed calls tab .

### Call your voice mailbox

You can divert your incoming calls to your voice mailbox (network service). People can leave you a message, for example, when you have not answered the call.

#### Change the phone number of your voice mailbox

- 1 Select **Menu** > **Settings and Calling** > **Call mailbox**.
- 2 Select and hold a mailbox, and from the pop-up menu, select **Change number**.
- 3 Enter the number (obtained from your network service provider), and select **OK**.

### Forward calls to your voice mailbox or to another phone number

If you cannot answer your calls, you can forward incoming calls to your voice mailbox or another phone number.

Select **Menu** > **Settings and Calling** > **Call forwarding** > **Voice calls**.

Call forwarding is a network service. For details, contact your service provider.


#### Forward all voice calls to your voice mailbox

Select **All voice calls** > **Activate** > **To voice mailbox**.

#### Forward all voice calls to another phone number

- 1 Select **All voice calls** > **Activate** > **To other number**.
- 2 Enter the number, or select **Find** to use a number saved in your contacts list.

Several forwarding options, such as **If busy** and **If not answered** can be active at the same time.

On the home screen,  indicates that all calls are forwarded.

Call restrictions and call forwarding cannot be active at the same time.

### Prevent making or receiving calls

Sometimes you may want to restrict the calls that can be made or received with your device. With call barring (network service), you can, for example, restrict all outgoing international calls or incoming calls when you are abroad.

Select **Menu** > **Settings and Calling** > **Call restriction**.

To edit the settings, you need the restriction password from your service provider.

### Prevent making calls

- 1 If an internet call service is installed, select **Cellular call restriction**.
- 2 To prevent making any calls or international calls, select **Outgoing calls** or **International calls**. To prevent making international calls, but allow calls to your home country, select **International calls except to home country**.
- 3 Select **Activate**. Call restriction affects all calls, including data calls.

### Prevent receiving calls

- 1 If an internet call service is installed, select **Cellular call restriction**.
- 2 To prevent receiving any calls or international calls when you are abroad, select **Incoming calls** or **Incoming calls when roaming**.
- 3 Select **Activate**.

### Prevent anonymous internet calls

Select **Internet call restriction** > **Anonym. call restriction** > **On**.

### Allow calls only to certain numbers

With the fixed dialing service, you can restrict calls, and only allow calls to certain phone numbers. For example, you can allow your children to call only family members or other key numbers.

Select **Menu** > **Contacts and Options** > **SIM numbers** > **Fixed dial contacts**.

Not all SIM cards support the fixed dialing service. You need your PIN2 code from your service provider.

### Activate fixed dialing

Select **Options** > **Activate fixed dialing**. Enter the PIN2 code.

### Select the people to whom calls are allowed

- 1 Select **Options** > **New SIM contact**.
- 2 Enter the PIN2 code.
- 3 Enter the contact name and phone number to which calls are allowed, and select **Done**. To add a contact from the contacts list to the fixed dialing list, select **Add from Contacts** and a contact.

To send a text message to a SIM contact while the fixed dialing service is active, you need to add the text message center number to the fixed dialing list.

## Video sharing

### About video sharing

With video sharing (network service), you can share live or recorded video from your device to another compatible device, during a voice call.

When you activate video sharing, the loudspeaker is automatically activated. If you do not want to use the loudspeaker, you can use a compatible headset.

### Video sharing requirements

To share video, both you and the recipient must:

- Be in a 3G network. If either of you move outside the 3G network, the voice call continues.
- Have the video sharing feature activated.
- Have person-to-person connections set up.

For more information on the service, 3G network availability, and fees associated with using this service, contact your service provider.

### Set up video sharing

To set up video sharing, you need person-to-person and 3G connection settings.

A person-to-person connection is also known as a Session Initiation Protocol (SIP) connection. The SIP profile settings must be configured in your device before you can use video sharing. Contact your service provider for the SIP profile settings, and save them to your device. Your service provider may send you the settings in a configuration message or give you a list of the needed parameters.

### Set up a person-to-person connection

- 1 Select **Menu** > **Settings and Connectivity** > **Admin. settings** > **SIP settings** and a SIP profile.
- 2 Enter the needed SIP profile settings.

### Edit video sharing settings

Select **Menu** > **Settings and Connectivity** > **Video sharing**.

### Use a 3G connection

For details about networks, contact your service provider.

### Add a SIP address to a contact

- 1 Select **Menu** > **Contacts**.
- 2 Select a contact or create a new contact.

- 3 Select **Options** > **Edit**.
- 4 Select **Options** > **Add detail** > **Share video**.
- 5 Enter the SIP address in the format `username@domainname` (you can use an IP address instead of a domain name).

If you do not know the SIP address for the contact, you can use the phone number of the recipient, including the country code, to share video (if supported by the network service provider).

### Share live or recorded video

During an active voice call, select **Options** > **Share video**.

- 1 To share live video, select **Live video**.  
To share a video, select **Video clip**.
- 2 Select the desired SIP address or phone number that is stored in the contact card for the recipient. If the SIP address or phone number is not available, manually enter the details, and select **OK**. If entering a phone number, you need to enter the country code. The invitation is sent to the SIP address.

If you access another application while sharing a video, the sharing is paused.

### Continue sharing

On the home screen, select **Options** > **Resume video sharing**.

### Stop sharing video

Select **Stop**. To end the voice call, select . When you end the call, video sharing also ends.

### Save automatically the live video you shared

Select **Menu** > **Settings and Connectivity** > **Video sharing** > **Video saving** > **On**.

### Accept a video sharing invitation

Select **Yes**. Video sharing begins automatically.

## Contacts

### About Contacts

 Select **Menu** > **Contacts**.

You can save and organize your friends' phone numbers, addresses, and other contact information. If you want to keep in touch with your most important contacts easily, you can add them to the home screen.

## Save phone numbers and mail addresses


You can save your friends' phone numbers, mail addresses, and other information to your contacts list.

Select **Menu** > **Contacts**.

### Add a contact to the contacts list

- 1 Select **Options** > **New contact**.
- 2 Select a field, and enter the details.

### Edit contact information

- 1 Select a contact.
- 2 Open the contact card tab .
- 3 Select a contact detail.

### Add details about a contact

Select a contact and **Options** > **Edit** > **Options** > **Add detail**.

## Save a number from a received call or message

Have you received a call or a message from a person whose phone number is not yet saved in the contacts list? You can easily save the number in a new or existing contact list entry.

### Save a number from a received call

- 1 Select **Menu** > **Applications** > **Log**.
- 2 Select **Recent calls** > **Received calls**.
- 3 Select and hold a phone number, and from the pop-up menu, select **Save to Contacts**.
- 4 Select whether you want to create a new contact list entry or update an existing one.

### Save a number from a received message

- 1 Select **Menu** > **Messaging**.
- 2 Select **Inbox** and a message.
- 3 Select the phone number and **Save to Contacts**.
- 4 Select whether you want to create a new contact list entry or update an existing one.

## Contact your most important people quickly

You can set your most important contacts as favorites. Your favorites are at the top of the contacts list, so you can contact them quickly.

Select **Menu** > **Contacts**.

### **Set a contact as a favorite**

Select and hold a contact, and from the pop-up menu, select **Add to favorites**.

### **Remove a contact from favorites**

Select and hold a contact, and from the pop-up menu, select **Remove from favorites**. The contact is not deleted from your standard contacts list.

### **Add a picture for a contact**

Want to see quickly who is calling you? Add a picture for a specific contact.

Select **Menu** > **Contacts** and a contact.

- 1 Select the icon next to the contact's name and **Add image**.
- 2 Select a picture from Photos.

### **Change or remove a picture**

Select and hold the picture, and from the pop-up menu, select **Change image** or **Remove image**.

The contacts must be stored in your device memory. To check which memory is in use, select **Options** > **Settings** > **Contacts to display**.

### **Set a ringtone for a specific contact**

Want to be able to hear that a particular person is calling you? You can set a ringtone specifically for that person.

Select **Menu** > **Contacts**.

### **Set a ringtone for a contact**

- 1 Select a contact and **Options** > **Edit**.
- 2 Select the Ringtone field and a ringtone.

### **Set a ringtone for a contact group**

- 1 Open the Groups tab.
- 2 Select and hold the title of a group, and from the pop-up menu, select **Ringtone**.
- 3 Select a ringtone from the list.

The ringtone only applies to the members of the group at the time that the ringtone is set.

### Send your contact information using My Card

My card is your electronic business card. With My card, you can send your contact information to others.

Select **Menu** > **Contacts**.

### Send your contact information as a business card

Select and hold **My card**, and from the pop-up menu, select **Send as business card**.

### Edit your contact information in My Card

Select **My card**, and the detail to edit.

### Create a contact group

When you have created contact groups, you can send a message to several people at the same time. For example, you can assign the members of your family to one group.

Select **Menu** > **Contacts**.

- 1 Open the **Groups** tab.
- 2 Select **Options** > **New group**.
- 3 Enter a name for the group, and select **OK**.
- 4 Select the group and **Options** > **Add members**.
- 5 To mark the contacts you want to add to the group, select them.

### Send a message to a group of people

Would you like to send a message to all your family members quickly? If you have assigned them to a group, you can send a message to all of them at the same time.

Select **Menu** > **Contacts**.

- 1 Open the **Groups** tab.
- 2 Select and hold a group title, and from the pop-up menu, select **Create message**.

### Copy contacts from the SIM card to your device

If you have contacts stored on your SIM card, you can copy them to your device. You can add more details to contacts that are stored on your device, such as alternative phone numbers, addresses, or a picture.

Select **Menu** > **Contacts**.

Select **Options** > **SIM numbers** > **Copy all to phone**.

**Tip:** If you now have a contact twice in your contacts list, select **Options > Settings > Contacts to display**, and clear the **SIM memory** check box.

### Back up your contacts to Ovi by Nokia

If you back up your contacts to Ovi by Nokia, you can easily copy your contacts to a new phone. If your phone is stolen or damaged, you can still access your contacts list online.

Select **Menu > Contacts and Options > Ovi Sync**.

If you allow automatic synchronization, all the changes you make in the contacts list are automatically backed up to Ovi by Nokia.

You need a Nokia account to use Ovi. If you do not have an account, create one at [www.ovi.com](http://www.ovi.com). You are also prompted to create an account, if you access any Ovi service using your phone.

If you use Ovi Sync to automatically synchronize your contacts with Ovi, do not allow contact synchronization with any other service as there may be conflicts. Ovi Sync for contacts is not available if you have activated contacts synchronization in Mail for Exchange.

## Messaging

### About Messaging



Select **Menu > Messaging**.

You can send and receive various kinds of messages:

- Text messages
- Audio messages
- Multimedia messages that contain pictures and videos
- Group messages



Messaging requires network support.

### Send a message

With text and multimedia messages, you can quickly contact your friends and family. In a multimedia message, you can attach pictures, videos, and sound clips that you want to share.

Select **Menu > Messaging**.

- 1 Select **New message**.

- 2 To select recipients from the contacts list, select the **To** title. To enter the recipient's phone number manually, enter the number in the **To** field.
- 3 To add an attachment, select .
- 4 Select .

Sending a message with an attachment may be more expensive than sending a normal text message. For more information, contact your service provider.

You can send text messages that are longer than the character limit for a single message. Longer messages are sent as two or more messages. Your service provider may charge accordingly.

Characters with accents, other marks, or some language options, take more space, and limit the number of characters that can be sent in a single message.



If the item you inserted in a multimedia message is too large for the network, the device may automatically reduce the size.

Only compatible devices can receive and display multimedia messages. Messages may look different in different devices.

### Send an audio message

You can record a sound clip, such as a birthday song, and send it to your friend as an audio message.

Select **Menu** > **Messaging**.

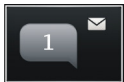
- 1 Select **Options** > **Create message** > **Audio message**.
- 2 To record the message, select .
- 3 To select the recipient from the contacts list, select the **To** title. To enter the recipient's phone number manually, enter the number in the **To** field.
- 4 Select .

### Receive messages

When you receive a message, you can open it directly from the home screen. Later, you can find the message in the **Conversations** folder or in the **Inbox** folder in **Messaging**.

Select **Menu** > **Messaging**.

When you receive a message, a notification is displayed on the home screen. The number of all missed events, including missed calls and received messages is displayed.



To open the message, select the notification widget. By default, the message is opened in the Conversations view.

### Reply to a received message in the Conversations view


Select the text input field at the bottom of the display, write a message, and select




### Open a message in the Inbox folder

Select **Inbox** and a message.

### Reply to a received message in the Inbox view

Open a message, and select .

### Forward a message in the Inbox view

Open a message, and select .

### Save a received multimedia item

Select and hold the item, and from the pop-up menu, select **Save**. The item can be viewed in the corresponding application. For example, to view saved pictures, open Photos.


## View a conversation

You can see the messages you have sent to and received from a particular contact from a single view, and continue the conversation from that view.

Select **Menu > Messaging**.

Select **Conversations** and a contact. All messages sent to and received from that contact are displayed.

### Reply to a message in a conversation

- 1 Open the conversation.
- 2 Select the text input field at the bottom of the display, and write a message.
- 3 To add attachments or more recipients, select **Options > Add**.
- 4 To send the message, select .

When you send a new message, it is added to the current conversation. If no conversation exists, a new conversation is started.

When you open a received message from the home screen, by default, the message opens in the Conversations view. If you want messages to open in the Inbox view, select **Options > Message view > Inbox**.

### Listen to a text message

You can set your device to read your text messages aloud.

- 1 Select **Menu > Messaging**.
- 2 Select **Inbox**.
- 3 Select and hold a message, and from the pop-up menu, select **Listen**.

Select **Menu > Settings > Phone > Speech**.


### Change the language

Select **Language** and a language.

### Download an additional language

Select **Options > Download languages**.

### Change the voice

Select  To preview a voice, select and hold the voice, and select **Play voice**.

### Change language

You can change the device language and the language in which you write your messages and mails. You can also activate predictive text input.

Select **Menu > Settings and Phone > Language**.

### Change the device language

Select **Phone language**.

### Change the writing language

Select **Writing language**.

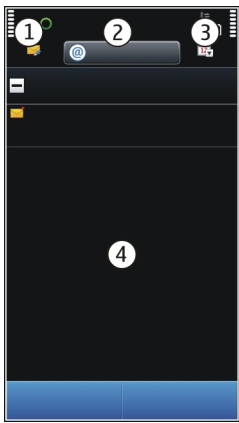
### Activate predictive text input

Select **Predictive text**.

**Mail****Mail****About Mail**

 Select Menu > Applications > Mail.

You can add several mailboxes and access them directly from your home screen. In the main mail view, you can switch from one mailbox to another.

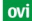


- 1 Write mail.
- 2 Switch between your mailboxes.
- 3 Sort your mail by, for example, date.
- 4 Mail in current mailbox.

Mail contains interactive elements. Select and hold, for example, mail to view a pop-up menu.

Using the service or downloading content may cause transfer of large amounts of data, which may result in data traffic costs.

**Get a free mail account from Ovi by Nokia**

 With Nokia's Ovi Mail, you can use your device or PC to access your mail. The anti-spam protection helps keep your mailbox in order, and the virus protection increases security.

- 1 Select **Menu** > **Applications** > **Mail**.
- 2 Select **New mailbox** > **Start** > **Ovi Mail** and **Sign up now**.

### Use your PC to access your mail account

Go to [www.ovi.com](http://www.ovi.com), and sign in.

### Add a mailbox

You can add several mailboxes to your device.


Select **Menu** > **Applications** > **Mail**.

### Add a mailbox

Select **New mailbox**, and follow the instructions.

To get a free Ovi Mail account from Nokia, select **Ovi Mail** and **Sign up now**.

### Add a mail widget to the home screen

- 1 In the home screen, tap and hold an empty area.
- 2 Select  and the desired widget from the list.

### Delete a mailbox

- 1 Select **Menu** > **Applications** > **Mail**.
- 2 Select **Options** > **Delete mailbox** and the mailbox.

### Read mail

You can use your device to read and reply to mail.

Select **Menu** > **Applications** > **Mail**.

### Read mail

Select the mail.

**Tip:** To zoom in or out, place two fingers on the screen, and slide them together or apart.



**Open or save an attachment**

Select the attachment and the appropriate option. If there is more than one attachment, you can save them all at once.

**Reply to mail**

Select **Options** > **Reply**.

**Forward mail**

Select **Options** > **Forward**.




**Tip:** If there is a web address in a mail and you would like to open the address in the device browser, select the address.

**Tip:** To open the next or previous mail, use the arrow icons.

**Send mail**

You can use your device to write and send mail, and attach files to your mail.

Select **Menu** > **Applications** > **Mail**.

- 1 Select .
- 2 To add a recipient from your contacts list, select the To, Cc, or Bcc icon. To enter mail address manually, select the To, Cc, or Bcc field.
- 3 To add an attachment to the mail, select .
- 4 To send the mail, select .

**Respond to a meeting request**

You can open and accept meeting requests. When you accept a meeting request, it appears in your calendar.

Select **Menu** > **Applications** > **Mail**, and open the meeting request.

Select  (Accept),  (Decline), or  (Tentative).

**Check your availability**

Select **Options** > **View calendar**.

To edit, send, or forward an accepted meeting request, open the request in your calendar.

The available options may vary.

### Open mail from the home screen

You can have several mail widgets in the home screen, depending on your device. Each mail widget contains one mailbox. In the widget, you can see if you have received new mail and the number of unread mails.

### Add a mail widget to the home screen

In the home screen, select **New mailbox**, and follow the instructions.

### Add another mail widget to the home screen

Tap and hold the home screen, and select , and the desired widget from the list.

### Open mail

In the mail widget, select mail.

## Internet

### About the web browser



Select Menu > Web.

Catch up on the news and visit your favorite websites. You can use your device web browser to view web pages on the internet.

To browse the web, you must have an internet access point configured in your device and be connected to a network.

### Browse the web

Select Menu > Web.

**Tip:** If you do not have a flat-rate data plan from your service provider, to save data costs in your phone bill, you can use a Wi-Fi network to connect to the internet.

### Go to a website

Select the web address bar, enter a web address, and select .

**Tip:** To search the internet, select the web address bar, enter the search word, and select the link below the web address bar.

### Zoom in or out

Place two fingers on the screen, and slide your fingers together or apart.

A cache is a memory location that is used to store data temporarily. If you have, or have tried to, access confidential information or a secure service, requiring passwords, clear the cache after each use.



### Empty the cache

Select  >  > **Privacy** > **Clear privacy data** > **Cache**.

### Add a bookmark

If you visit the same websites all the time, add them to your Bookmarks view, so you can easily access them.

Select **Menu** > **Web**.

While browsing, select  > .


### Go to a bookmarked website while browsing



Select  >  and a bookmark.

### Subscribe to a web feed

You don't have to visit your favorite websites regularly to keep up with what's new on them. You can subscribe to web feeds and get links to latest content automatically.

Select **Menu** > **Web**.

Web feeds on web pages are usually indicated with . They are used to share, for example, the latest news headlines or blog entries.

Go to a blog or web page that contains a web feed, and select  >  and the desired feed.



### Update a feed

In the Web feeds view, select and hold the feed, and from the pop-up menu, select **Refresh**.

### Set feeds to automatically update

In the Web feeds view, select and hold the feed, and from the pop-up menu, select **Edit** > **Automatic updates**.

### Unreadable characters while browsing the web

If unreadable characters are displayed, select **Menu** > **Web** and  >  > **Page** > **Default encoding** and the correct encoding for the character set of the language.

## Social networks

### About Social



**Select Menu > Social**, and sign in to the social networking services that you use.

To enhance your social networking experience, get Social on Ovi. When signed in to social networking services through Social, you can do the following:

- See your friends' status updates from multiple services in one view
- Post your own status update to multiple services at the same time
- Instantly share pictures you take with the camera
- Share videos with your friends
- Link your online friends' profiles to their contact information in your device
- Add events from the service calendar to your device calendar

Only those features that are supported by the social networking service are available.

Using social networking services requires network support. This may involve the transmission of large amounts of data and related data traffic costs. For information about data transmission charges, contact your service provider.

The social networking services are third party services and not provided by Nokia. Check the privacy settings of the social networking service you are using as you may share information with a large group of people. The terms of use of the social networking service apply to sharing information on that service. Familiarize yourself with the terms of use and the privacy practices of that service.

### Select your friends' status updates in one view

When you are signed in to social networking services through the Social application, you can see your friends' status updates from all those services in a single view. You do not have to switch between different applications to see what everyone is up to.

**Select Menu > Social.**

- 1 Select a service, and sign in.
- 2 Select **Add social network**.
- 3 Select another service, and sign in.
- 4 Select **All Activity**.

All the feeds from the services you have added are automatically included in the view.

### Post your status to social networking services

With the Social application, you can post your status update to social networking services.

Select **Menu** > **Social**.

Write your status update in the text field.

### Link your online friends to their contact information

You can link your online friends' profiles from social networking services to their contact information in your device. After linking, you can view their contact information directly from the Social application, and see their latest status updates in your contacts list.

Select **Menu** > **Social**.

- 1 Select an online friend's profile picture.
- 2 From the pop-up menu, select **Link Profile to Contact**.
- 3 From your contacts list, select the contact to which to link the profile.

### See your friends' status updates on the home screen

When you sign in to social networking services through Ovi by Nokia, you can see your online friends' status updates directly on the home screen.

#### Browse updates on the home screen

When you are signed into a service, you can see updates in the Social widget.


#### Open the Social application from the home screen

Select the Social widget. If you are signed in, the status updates view opens. If you are not signed in, the sign-in view opens.

### Upload a picture or video to a service


Use the Social application to upload your pictures or videos to social networking services.

Select **Menu** > **Social**.

- 1 Select .
- 2 Select whether to upload a picture or video.
- 3 To mark the items to upload, select the items.  
The maximum file size is 4 MB for pictures and 10 MB for videos.
- 4 If uploading a single picture, you can add a caption and a tag with a comment to a particular section of the picture.

To upload a video, the feature needs to be supported by the social networking service, and you need to use a Wi-Fi connection.

### Take a picture and upload it

- 1 Select .
- 2 Select the option for uploading a picture from the camera.
- 3 Take a picture.
- 4 Add a caption and a tag with a comment to a particular section of the picture.

### Contact a friend from a social networking service

When commenting your friend's status is not enough, you can call or send a message to the friend.

Select **Menu** > **Social**.

- 1 Select a friend's profile picture.
- 2 From the pop-up menu, select **View contact info**.
- 3 Select a communication method.

This feature is available if you have linked your online friends to their contact information in your device.

The available communication methods vary. To call or send a text message to a friend, the feature needs to be supported by the service.

### Add an event to your device calendar

When responding to invitations to events in a social networking service, you can add the events to your device calendar, so you can view upcoming events even if you are not online.

Select **Menu** > **Social** and a service, and sign in.

- 1 Select an invitation to an event.
- 2 Add the event to your device calendar.

This feature is available only if supported by the service.

## Camera

### About Camera

 Select **Menu** > **Applications** > **Camera**.

Why carry a separate camera if your device has all you need for capturing memories? With the Camera application, you can easily take pictures or record videos. You can later use your device to view or edit the pictures and videos, share them on the internet, or send them to compatible devices.

### **Take a picture**

Press and hold the camera key.



### **Zoom in or out**

Use the volume keys.

The face tracker detects faces, draws rectangles around them, and optimizes the focus — even when the faces are moving. Face tracking is activated by default.

### **Deactivate face tracking**

Select ● ● ● > Face detect..

### **Save location information to your pictures and videos**

If you want to know exactly where you were when you took a particular picture or video while hiking or traveling, you can set your device to automatically record the location. Later, you can view the locations on a map.


Select **Menu** > **Applications** > **Camera**.


### **Activate the location recording feature**

Select **Options** > **Settings** > **Save location info** > **Yes**.

It may take several minutes to obtain the coordinates of your location. The availability and quality of GPS signals may be affected by your location, buildings, natural obstacles, and weather conditions. If you share a file that includes location information, also the location information is shared, and your location may be visible to third parties viewing the file. This feature requires network service.

Location information indicators:

 — Location information is unavailable. Location information may not be saved to pictures or videos.

 — Location information is available. Location information is saved to pictures or videos.


Location information can be attached to an image or a video if location coordinates can be determined via network and GPS. If you share an image or a video which has location information attached, the location information may be visible to others that view the image or the video. You can deactivate geotagging in the camera settings.

### Take a picture in the dark

To take pictures even when light levels are low, activate night mode.

Press and hold the camera key.



### Activate night mode

- 1 Select  > **Scene mode**.
- 2 To use the flash, select **Night portrait**. If you do not want to use the flash, select **Night**.

### Picture tips

Select **Menu** > **Applications** > **Camera**.


When taking a picture, note the following:

- Use both hands to keep the camera steady.
- When you zoom in, the image quality may decrease.
- The camera activates battery saving mode after about a minute of inactivity. To activate the camera again, press  briefly.
- You can set the user defined scene to be used as the default scene every time you open the Camera application. Select  > **Scene mode** > **User defined** > **Edit**. Edit the settings, and select **Set as default scene mode** > **Yes**.
- Keep a safe distance when using the flash. Do not use the flash on people or animals at close range. Do not cover the flash while taking a picture.

### Record a video

Besides taking pictures with your device, you can also capture your special moments as videos.

Press and hold the camera key.

- 1 To switch from image mode to video mode, if necessary, select .
- 2 To start recording, press the camera key. A red record icon is displayed.



- 3 To pause recording, select **Pause**. If you pause recording and do not press any key within five minutes, the recording stops.  
To zoom in or out, use the volume keys.
- 4 To stop recording, press the camera key. The video is automatically saved in Photos.

**Tip:** You can send your video in a multimedia message. To limit the video size for sending, before recording, select **Options** > **Settings** > **Video quality**, and drag the slider to **Basic**.


### Send a picture or video

You can send pictures and videos in a multimedia or mail message, or using Bluetooth.

#### Send in a multimedia message

- 1 Take a picture or record a video.
- 2 Select **Options** > **Send** > **Via message**.
- 3 To select a recipient from your contacts list, select . To enter the recipient's name or phone number manually, select the **To** field, and enter the name or phone number.
- 4 Select .

#### Send in a mail message

- 1 Take a picture or record a video.
- 2 Select **Options** > **Send** > **Via mail**.
- 3 To select a recipient from your contacts list, select the **To** title. To enter the recipient's address manually, select the **To** field, and enter the address.
- 4 Select .

#### Send using Bluetooth

- 1 Take a picture or record a video.
- 2 Select **Options** > **Send** > **Via Bluetooth**.
- 3 Select the device to connect to, or search for more devices.  
If the other device requires a passcode, enter the passcode.

## Your pictures and videos

### About My Videos and My Images

 **Select Menu** > **Photos or Videos**.

The My Videos and My Images applications are the place from where you can view all pictures and videos on your device. You can easily watch videos, or browse through pictures, and print out the best shots.

To manage your media files more effectively, add tags to the files, or organize them in categories.

### View pictures and videos

Select **Menu** > **Photos** or **Videos**.

#### Browse the pictures and videos

Select a folder, and swipe up or down.

#### View a picture in full screen mode

Select the picture, and turn your device to landscape mode.

To browse pictures in full screen mode, swipe left or right.

To view the zoom slider, tap the picture. Alternatively, place two fingers on the screen, and to zoom in, slide your fingers apart. To zoom out, slide your fingers together.



#### View your pictures as a slide show

Select a picture and **Options** > **Slide show** > **Play**. The slide show starts from the selected picture.

#### Play a video

Select a folder and a video.

Pictures and videos can also be sent to you from a compatible device. To be able to view a received picture or video in Photos, you must first save it.

### Edit the pictures you have taken

With Photo editor, you can add effects, text, clip art, or frames to your pictures.

Select **Menu** > **Applications** > **Photo editor** and a picture.

**Tip:** If the file you want to edit does not appear available, move the file to the Sound files, Images, Video clips, or Music folder.

- 1 To insert effects, select the desired option from the extended toolbar.
- 2 To save the edited picture, select **Options > Save**. The edited picture does not replace the original picture.

To later view your edited pictures, select **Menu > Photos**.

### Video editor

#### About Video Editor

Select **Menu > Videos & TV > Video Editor**.

You can combine pictures and videos with sounds, effects, and text, and easily turn them into short movies or slideshows.

Save the sound files that you want to use in a movie to the Sound files folder on your device.

### Create a movie

With **Storyboard**, you can easily create short movies from videos and pictures.

Select **Menu > Videos & TV > Video Editor**.

**Tip:** If the files you want to edit do not appear available, move the files to the Sound files, Images, Video clips, or Music folder.

- 1 Select **Storyboard**.
- 2 To add videos and pictures to your movie, select **Select media**. To view the files you have selected, swipe right or left.
- 3 To add transitions between videos and pictures, select **+**.
- 4 To activate editing mode, select a video or picture. In editing mode, you can cut the length of the video or define how long a picture is displayed.
- 5 Select the sounds to play in the background. Copy protected audio files cannot be used.
- 6 To add text or subtitles to your movie, select **Add text**.
- 7 Save your movie.

### Create a slideshow

The **Video Editor** application contains templates for different occasions. You can use them to create slideshows of events, such as anniversaries or parties.

Select **Menu > Videos & TV > Video Editor**.

**Tip:** If the files you want to edit do not appear available, move the files to the Sound files, Images, Video clips, or Music folder.


- 1 Select **Slide show**.
- 2 Select a template to use for the slideshow. When you select a template, a preview is displayed.
- 3 Select the pictures to use.
- 4 Select the sounds to play in the background. Copy protected audio files cannot be used.
- 5 Add a title.
- 6 Preview and save your slideshow.

### Print a picture you have taken

You can print your pictures directly using a compatible printer.

- 1 Use a compatible USB data cable to connect your device to a printer in Media transfer mode.
- 2 Select the picture to print.
- 3 Select **Options > Print**.
- 4 To use the USB connection to print, select **Print > Via USB**.
- 5 To print the picture, select **Options > Print**.

**Tip:** You can also use a Bluetooth printer. Select **Print > Via Bluetooth**. Change the selected printer to Bluetooth, and follow the instructions on the display.

**Tip:** When the USB cable is connected, you can change the USB mode. In the top right corner of the browsing view, select  **> USB**.

## Videos

### About Videos

With the Videos application, you can watch videos on your device.

Using a packet data access point to download a video may involve the transmission of large amounts of data through your service provider's network. For information about data transmission charges, contact your service provider.

### Play a video

Select **Menu > Videos & TV**.

Select the video.

## Use the video player controls

Tap the screen.

## Copy your videos between your device and computer

Have you recorded videos with your device that you want to watch on your computer? Or do you want to copy your videos from your device to your computer? Use a compatible USB data cable to copy your videos between your device and a computer.

- 1 Use a compatible USB data cable to connect your device to a computer.  
If copying between a memory card in your device and a computer, make sure the memory card is inserted.
- 2 Open Nokia Ovi Suite on your computer, and follow the displayed instructions.

## Music and audio

### Music player

#### About Music player

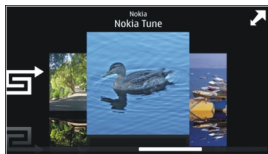
 Select Menu > Music > Music player.

With the Music player application, you can listen to music and podcasts while on the move.


### Play music

Select Menu > Music > Music player.

- 1 Select **Options** and the desired view. You can browse by song, album, or genre.  
To browse the album covers in the album view, swipe left or right.



- 2 Select a song or album.

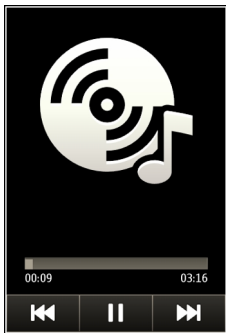
**Tip:** To listen to the songs in a random order, select .

### Pause and resume playback

To pause playback, select ; to resume, select .

## Rewind or fast-forward a song

Select and hold **⏮** or **⏭**.



**Tip:** When listening to music, you can return to the home screen, leaving the music playing in the background.

## Create a playlist

Want to listen to different music for different moods? With playlists, you can create selections of songs to play in a specific order.

Select **Menu** > **Music** > **Music player**.

- 1 Select **Options** > **Playlists**.
- 2 Select **Options** > **New playlist**.
- 3 Enter a name for the playlist, and select **OK**.
- 4 Select the songs to add to the playlist, in the order you want them to play.

If a compatible memory card is inserted, the playlist is saved to the memory card.

## Add a song to a playlist

Select and hold the song, and from the pop-up menu, select **Add to playlist**.

## Remove a song from playlist

In the playlist view, select and hold the song, and from the pop-up menu, select **Remove**.

This does not delete the song from the device; it only removes it from the playlist.

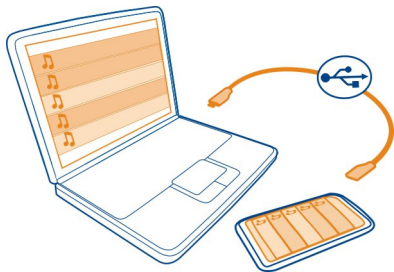
### Play a playlist

Select **Options** > **Playlists** and the playlist.

**Tip:** Music player automatically creates a playlist for the most played songs, recently played songs, and recently added songs.

### Copy music from your PC

Do you have music on your PC that you want to listen on your device? Nokia Ovi Suite is the fastest way to transfer music on your device, and you can use it to manage and synchronize your music collection.



- 1 Use a compatible USB data cable to connect your device to a compatible computer. Make sure a compatible memory card is inserted in your device.
- 2 On your device, select the notification area in the top right corner, and select **Media transfer**.
- 3 Open Nokia Ovi Suite on your computer, and follow the displayed instructions. For more information, see the Nokia Ovi Suite user guide.

Download the latest version of Nokia Ovi Suite from [www.ovi.com](http://www.ovi.com).

Some music files can be protected by digital rights management (DRM) and cannot be played on more than one device.

### Protected content

Digital rights management (DRM) protected content, such as pictures, videos, or music, comes with an associated license that defines your rights to use the content.

You can view the details and status of the licences, and reactivate and remove licenses.

## Manage digital rights licenses

Select **Menu** > **Settings** > **Phone** > **Phone management** > **Security settings** > **Protected content**.

## Record sounds


You can use your device recorder to record sounds from nature, such as birds singing, as well as voice memos. You can send the recorded sound clips to your friends.

Select **Menu** > **Applications** > **Office** > **Recorder**.

### Record a sound clip

Select .

### Stop recording


Select . The sound clip is automatically saved to the Sound files folder in the File manager application.

### Send a recorded sound clip as an audio message

Select **Options** > **Send**.

## FM radio

### About FM radio

 Select **Menu** > **Music** > **Radio**.



You can listen to FM radio stations using your device - just plug in a headset, and select a station!



### Find and save radio stations



Search for your favorite radio stations, and save them, so you can easily listen to them later.

Select **Menu > Music > Radio**.

From the toolbar, select  > .

To find radio stations, you can use the automatic scanning, or you can set a frequency manually. The first time you open the FM radio, the application automatically searches for radio stations audible at your location.

### Scan for all available stations

- 1 From the toolbar, select .
- 2 To save all found stations, from the toolbar, select . To save a single station, select and hold the station title, and from the pop-up menu, select **Save**.

### Set a frequency manually

- 1 From the toolbar, select  **Tune manually**.
- 2 Use the up and down arrow icons to enter a frequency.

## Listen to the radio



You can enjoy your favorite FM radio stations on the go.

Select **Menu > Music > Radio**.


### Listen to a saved station

From the toolbar, select  > , and select a station from the list.

### Go to the next or previous saved station

Swipe right or left. Alternatively, select  or .

### Scan for another available station

Swipe up or down. Alternatively, select and hold  or .

### Listen to the radio using the loudspeaker

Select **Options > Activate loudspeaker**. You still need to have a headset attached.

You can make or answer a call while listening to the radio. The radio is automatically muted during an active call.

The quality of the radio broadcast depends on the coverage of the radio station in the area.



## Reorder the list of saved stations

You can reorder the list of saved stations, so that your favorites are at the top.

Select **Menu** > **Music** > **Radio**.

The stations you have saved are listed in the Station list view.

### Move a station on the list

- 1 From the toolbar, select  > .
- 2 Select and hold the station title, and from the pop-up menu, select **Move**.
- 3 Select the new place on the list.

## Maps

### Navigate to a destination



Select **Menu** > **Maps**.

Maps shows you what is nearby, helps you plan your route, and guides you where you want to go, free of charge. You can:

- Find cities, streets, and services
- Find your way with turn-by-turn directions
- Synchronize your favorite locations and routes between your phone and the Ovi Maps internet service
- Check weather forecasts and other local information, if available

**Tip:** You can also plan a route on your computer with the Ovi Maps web service, and copy the route to your phone. For more information, go to [www.ovi.com](http://www.ovi.com).

Some services may not be available in all countries, and may be provided only in selected languages. The services may be network dependent. For more information, contact your network service provider.

Using the service or downloading content may cause transfer of large amounts of data, which may result in data traffic costs.

Almost all digital cartography is inaccurate and incomplete to some extent. Never rely solely on the cartography that you download for use in this device.

Some content is generated by third parties and not Nokia. The content may be inaccurate and is subject to availability.

### My position

#### View your location and the map

See your current location on the map, and browse maps of different cities and countries.

Select **Menu** > **Maps and Map**.

 indicates your current position, if available. When searching for your position,  blinks. If your position is not available,  indicates your last known position.

If accurate positioning is not available, a red halo around the positioning icon indicates the general area you might be in. In densely populated areas, the accuracy of the estimate increases, and the red halo is smaller than in lightly populated areas.

### Browse the map

Drag the map with your finger. By default, the map is oriented north.

### View your current or last known location


Select .

### Zoom in or out.

Select + or -.

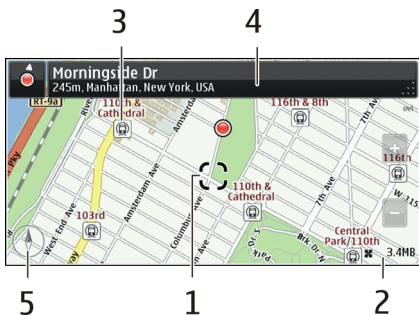
**Tip:** To zoom, you can also place two fingers on the map, and slide your fingers apart to zoom in or together to zoom out. Not all devices support this feature.

If you browse to an area not covered by the street maps that are stored on your device, and you have an active data connection, new street maps are automatically downloaded.

To prevent downloading new street maps automatically, in the main menu, select  > **Internet** > **Connection** > **Offline**.

Map coverage varies by country and region.

### Map view



1 Selected location

- 2 Indicator area
- 3 Point of interest (for example, a railroad station or a museum)
- 4 Information area
- 5 Compass

### Change the look of the map

View the map in different modes, to easily identify where you are.

Select **Menu > Maps and Map**.

Select  and from the following:

**Map view** — In the standard map view, details such as location names or highway numbers are easy to read.

**Satellite view** — For a detailed view, use satellite images.

**Terrain view** — View at a glance the ground type, for example, when you are traveling off-road.

**3D view** — For a more realistic view, change the perspective of the map.

**Landmarks** — Display prominent buildings and attractions on the map.

**Night mode** — Dim the colors of the map. When traveling at night, the map is easier to read in this mode.

**Transit lines** — View selected public transportation services, such as metro and trolley routes.

The available options and features may vary by region. The unavailable options are dimmed.

### Download and update maps

To avoid cellular data transfer costs, download the latest street maps and voice guidance files to your computer, and then transfer and save them to your device.

Use the Nokia Ovi Suite application to download the latest street maps and voice guidance files to your compatible computer. To download and install Nokia Ovi Suite, go to [www.ovi.com](http://www.ovi.com).

**Tip:** Save new street maps to your device before a journey, so you can browse the maps without an internet connection when traveling abroad.

If you have an older version of the Maps application installed on your device, when you update to the latest version, the country or region maps are deleted. Before using Nokia Ovi Suite to download new country or region maps, open and close the Maps application.

Make sure you have the latest version of Nokia Ovi Suite installed on your computer.

### Use the compass


When the compass is activated, both the arrow of the compass and the map rotate automatically in the direction to which the top of your device is pointing.

Select **Menu > Maps and Drive**.

### Activate the compass

Select .

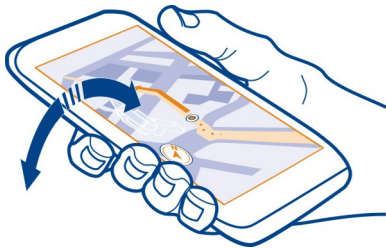
### Deactivate the compass

Select  again. The map is oriented north.

If the compass needs calibration, the compass is red.

### Calibrate the compass

Rotate the device around all axes in a continuous movement until the compass turns green.



The compass has limited accuracy. Electromagnetic fields, metal objects, or other external circumstances may also affect the accuracy of the compass. The compass should always be properly calibrated.

### About positioning methods

Maps displays your location on the map using GPS, A-GPS, Wi-Fi, or network (cell ID) based positioning.

The global positioning system (GPS) is a satellite-based navigation system used for calculating your location. Assisted GPS (A-GPS) is a network service that sends you GPS data, improving the speed and accuracy of the positioning.

Wi-Fi network positioning improves position accuracy when GPS signals are not available, especially when you are indoors or between tall buildings.

With network (cell ID) based positioning, the position is determined through the antenna system your cellular phone is currently connected to.

When you use Maps for the first time, you are prompted to define the internet access point to use to download map information, use A-GPS, or connect to a Wi-Fi network.

To avoid network service costs, you can disable A-GPS, Wi-Fi, and network (cell ID) based positioning in your device positioning settings, but calculating your location may take much longer. For more information about positioning settings, see the user guide of your device.

The availability and quality of GPS signals may be affected by your location, satellite positions, buildings, natural obstacles, weather conditions and adjustments to GPS satellites made by the United States government. GPS signals may not be available inside buildings or underground.

Do not use GPS for precise location measurement, and never rely solely on the location information provided by GPS and cellular networks.

The trip meter may not be accurate, depending on the availability and quality of your GPS connection.

Depending on the available positioning methods, the accuracy of positioning may vary from a few metres to several kilometers.

## Search

### Find a location

Maps helps you find specific locations and businesses.

Select **Menu** > **Maps and Map** > **Search**.

- 1 Enter search words, such as a street address or place name.
- 2 Select an item from the list of proposed matches.  
The location is displayed on the map.

### Return to the list of proposed matches

Select **Search**.

**Tip:** In the search view, you can also select from the list of your previous search words.

### Search for different types of nearby places

Select **Categories** and a category, such as shopping, accommodation, or transport.

If no search results are found, make sure the spelling of your search words is correct. Problems with your internet connection may also affect results when searching online.

If you have maps of the searched area stored on your phone, to avoid data costs, you can also get search results without an active internet connection, but the search results may be limited.

### View location details

Find more information about a specific location or place, such as a hotel or restaurant, if available.

Select **Menu > Maps and Map > Search**.

The available options may vary by region. To view all the available place details, you need an active internet connection.

### View the details of a place

Search for a place. Select the place and its information area.

### Rate a place

Search for a place. Select the place, its information area, **Rate**, and the star rating. For example, to rate a place as being 3 out of 5 stars, select the third star.

When you find a place that does not exist or contains inappropriate information or incorrect details, such as the wrong contact information or location, it is recommended that you report it to Nokia.

### Report incorrect place information

Select the place, its information area, **Report**, and the appropriate option.

## Favorites

### Save or view a place or route

Save an address, place of interest, or route, so it can be quickly used later.

Select **Menu > Maps**.

### Save a place

- 1 Select **Map**.
- 2 Tap the location. To search for an address or place, select **Search**.
- 3 Tap the location's information area.
- 4 Select **Save**.

### Save a route

- 1 Select **Map**.
- 2 Tap the location. To search for an address or place, select **Search**.
- 3 Tap the location's information area.
- 4 To add another route point, select **Navigate** > **Add to Route**.
- 5 Select **Add new route point** and the appropriate option.
- 6 Select **Show route** > **Options** > **Save route**.

### View a saved place

In the main view, select **Favorites** > **Places**, the place, and **Show on map**.

### View a saved route

In the main view, select **Favorites** > **Routes** and the route.

## View and organize places or routes

Use your Favorites to quickly access the places and routes you have saved.

Group the places and routes into a collection, for example, when planning a trip.

Select **Menu** > **Maps** and **Favorites**.

### View a saved place on the map

- 1 Select **Places**.
- 2 Go to the place.
- 3 Select **Show on map**.

To return to the list of saved places, select **List**.

### Create a collection

Select **Create new collection**, and enter a collection name.

### Add a saved place to a collection

- 1 Select **Places** and the place.
- 2 Select **Organize collections**.
- 3 Select **New collection** or an existing collection.

### Rename or delete a saved place in a collection

- 1 Select **Places**.
- 2 Select and hold the place, and from the pop-up menu, select the appropriate option.

**Rename or delete a route in a collection**

- 1 Select **Routes**.
- 2 Select and hold the place, and from the pop-up menu, select the appropriate option.

**Send a place to a friend**

When you want to show your friends where a place is on the map, you can send the place to them.

Select **Menu > Maps** and **Map > My position**.

To view the place on the map, your friends don't need to have a Nokia cell phone, but an active internet connection is required.

- 1 Select a place and its information area.
- 2 Select **Share > Share via SMS** or **Share via Email**.

A mail or text message containing a link to the location on the map is sent to your friend.

**Synchronize your Favorites**

Plan a trip on your computer at the Ovi Maps website, synchronize the saved places and routes with your cellular phone, and access the plan on the go.

To synchronize places or routes between your cellular phone and the Ovi Maps internet service, you need to be signed in to your Nokia account.

**Synchronize saved places and routes**

Select **Favorites > Synchronize with Ovi**. If you do not have a Nokia account, you are prompted to create one.

You can set your device to synchronize your Favorites automatically when you open or close the Maps application.

**Synchronize Favorites automatically**

Select  > **Synchronization > Synchronization > At start-up and shut-d..**

Synchronizing requires an active internet connection, and may involve the transmission of large amounts of data through your service provider's network. For information about data transmission charges, contact your service provider.

To use the Ovi Maps internet service, go to [www.ovi.com](http://www.ovi.com).

## Drive and Walk

### Get voice guidance


Voice guidance, if available for your language, helps you find your way to a destination, leaving you free to enjoy the journey.

Select **Menu** > **Maps and Drive or Walk**.

When you use drive or walk navigation for the first time, you are asked to select the language of the voice guidance, and download the appropriate files.

If you select a language that includes street names, also the street names are said aloud.

### Change the voice guidance language

In the main view, select  > **Navigation** > **Drive guidance** or **Walk guidance** and the appropriate option.

### Deactivate voice guidance

In the main view, select  > **Navigation** > **Drive guidance** or **Walk guidance**, and select **None**.

### Repeat the voice guidance for car navigation

In the navigation view, select **Options** > **Repeat**.

### Change the volume of the voice guidance for car navigation

In the navigation view, select **Options** > **Volume**.

## Drive to your destination

When you need turn-by-turn directions while driving, Maps helps you get to your destination.

Select **Menu** > **Maps and Drive**.

### Drive to a destination

Select **Set destination** and the appropriate option.



### Drive to your home

Select **Drive home**.

You can start driving without a set destination. The map follows your location, and traffic information is automatically displayed, if available. To set the destination later, select **Destination**.


By default, the map rotates to your driving direction.

### Orient the map to north

Select . To rotate the map back to your driving direction, select .

When you select **Drive home** or **Walk home** for the first time, you are prompted to define your home location.

### Change your home location

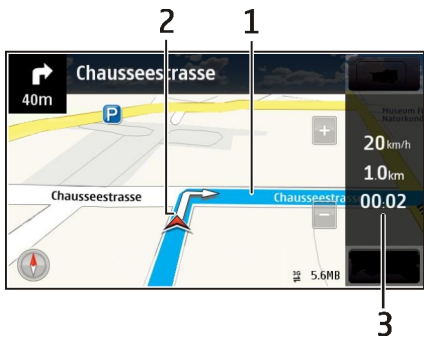
- 1 In the main view, select .
- 2 Select **Navigation > Home Location > Redefine**.
- 3 Select the appropriate option.

### Change views during navigation

Swipe left to select **2D view**, **3D view**, **Arrow view**, or **Route overview**.

Obey all local laws. Always keep your hands free to operate the vehicle while driving. Your first consideration while driving should be road safety.

### Navigation view



- 1 Route
- 2 Your location and direction
- 3 Information bar (speed, distance, time)

### Get traffic and safety information

Enhance your driving experience with real-time information about traffic events, lane assistance, and speed limit warnings, if available for your country or region.

Select **Menu** > **Maps and Drive**.

### **View traffic events on the map**

During drive navigation, select **Options** > **Traffic info**. The events are displayed as triangles and lines.

### **Update traffic information**

Select **Options** > **Traffic info** > **Update traffic info**.

When planning a route, you can set the phone to avoid traffic events, such as traffic jams or roadworks.

### **Avoid traffic events**

In the main view, select  > **Navigation** > **Reroute due to traffic**.

The location of speed cameras may be shown on your route during navigation, if this feature is enabled. Some jurisdictions prohibit or regulate the use of speed camera location data. Nokia is not responsible for the accuracy, or the consequences of using speed camera location data.

### **Walk to your destination**

When you need directions to follow a route on foot, Maps guides you over squares, and through parks, pedestrian zones, and even shopping centers.

Select **Menu** > **Maps and Walk**.

### **Walk to a destination**

Select **Set destination** and the appropriate option.


### **Walk to your home**

Select **Walk home**.

You can start walking without a set destination.


By default, the map is oriented to north.

### **Rotate the map to your walking direction**

Select . To rotate the map back to north, select .

When you select **Drive home** or **Walk home** for the first time, you are prompted to define your home location.

### Change your home location

- 1 In the main view, select .
- 2 Select **Navigation > Home Location > Redefine**.
- 3 Select the appropriate option.

### Plan a route

Plan your journey, and create your route and view it on the map before setting off.

Select **Menu > Maps and Map**.

### Create a route

- 1 Tap the location of your starting point. To search for an address or place, select **Search**.
- 2 Tap the location's information area.
- 3 Select **Navigate > Add to Route**.
- 4 To add another route point, select **Add new route point** and the appropriate option.

**Tip:** If you want to plan a route from the convenience of your computer, and copy it to your phone, go to the Ovi Maps web service at [www.ovi.com](http://www.ovi.com).

### Change the order of the route points

- 1 Select a route point.
- 2 Select **Move**.
- 3 Tap the place where you want to move the route point to.

### Edit the location of a route point

Tap the route point, and select **Edit** and the appropriate option.

### View the route on the map

Select **Show route**.

### Navigate to the destination

Select **Show route > Options > Start driving** or **Start walking**.

The route settings affect the navigation guidance and the way the route is displayed on the map.

### Change the settings for a route

- 1 In the route planner view, open the **Settings** tab. To get to the route planner view from the navigation view, select **Options > Route points** or **Route points list**.

- 2 Set the transportation mode to **Drive** or **Walk**. If you select **Walk**, one-way streets are regarded as normal streets, and pathways and routes through, for example, parks and shopping centers, can be used.
- 3 Select the desired option.

### Select the walking mode

Open the Settings tab, set the transportation mode to **Walk**, and select **Preferred route** > **Streets** or **Straight line**. **Straight line** is useful on off-road terrain as it indicates the walking direction.

### Use the faster or shorter driving route

Open the Settings tab, set the transportation mode to **Drive**, and select **Route selection** > **Faster route** or **Shorter route**.

### Use the optimized driving route

Open the Settings tab, set the transportation mode to **Drive**, and select **Route selection** > **Optimized**. The optimized driving route combines the advantages of both the shorter and the faster routes.

You can also choose to allow or avoid using, for example, highways, toll roads, or ferries.

### Give feedback on Maps

Participate in improving the Maps application, and send your feedback.

Select **Menu** > **Maps**.

- 1 Select **?** > **Feedback**.
- 2 Select how likely you are to recommend Maps to other people. You can also give your reasons.  
The feedback is anonymous.
- 3 Select **Submit**.

To give feedback, you need to have an active internet connection.

After you have sent your feedback for the current version of Maps, the option is no longer available.

### Report incorrect map information

If you notice that information on the map is incorrect or missing, report it to Nokia.

Select **Menu** > **Maps and More** > **Map Reporter**.

The service may not be available for your country or region. Reporting incorrect or missing information requires an internet connection.

You can report issues, such as:

- Missing or incorrect street names
- Streets that are blocked or unsuitable for walking on
- Incorrect restrictions or speed limits

You can add further details when reporting.

## Time management

### Clock

#### About the clock

 Select Menu > Applications > Clock.

Set and manage alarms, and check local times in different countries and cities.

#### Set the time and date

In the home screen, select the clock and **Options** > **Settings** > **Time or Date**.

**Tip:** To view the time and date when the screen and keys are locked, press and hold the menu key.

#### Set an alarm

You can use your device as an alarm clock.

On the home screen, select the clock.

- 1 Select **New alarm**.
- 2 Set the alarm time, and enter a description.
- 3 To set the alarm to sound, for example, at the same time every day, select **Repeat**.

#### Remove an alarm

Select and hold the alarm, and from the pop-up menu, select **Delete alarm**.

#### Snooze an alarm

When an alarm sounds, you can snooze the alarm. This pauses the alarm for a defined length of time.

When the alarm sounds, select **Snooze**.

### Set the length of the snooze time

- 1 On the home screen, select the clock.
- 2 Select **Options** > **Settings** > **Alarm snooze time**, and set the length of time.

**Tip:** You can snooze alarms also by turning your device display down.



### Activate turning control for snoozing

Select **Menu** > **Settings** and **Phone** > **Sensor settings** > **Silence alarms** > **On**.

### Update the time and date automatically

You can set your device to update the time, date, and time zone automatically.

On the home screen, select the clock and **Options** > **Settings** > **Automatic time update** > **On**.

Automatic update is a network service.

### Change the time zone when traveling

You can set the clock to the local time when traveling abroad.

On the home screen, select the clock, and open the world clock tab.

### Add a location

Select **Options** > **Add location** and a location.

### Set your current location

Select and hold a location, and from the pop-up menu, select **Set as current location**.

The time in your device is changed according to the selected location. Make sure the time is correct.

### Check the time in different cities

To view the time in different locations, add them to your world clock tab. You can also add pictures for the locations, for example, a picture of your friend who lives in the city in question, or a view from your favorite tourist attraction.

On the home screen, select the clock, and open the world clock tab.

#### Add a location

Select **Options** > **Add location** and a location. You can add up to 15 locations.

#### Add a picture for a location

Select and hold a location, and from the pop-up menu, select **Change image** and a picture.

## Calendar

### About the calendar


**12** Select **Menu** > **Calendar**.

With your device calendar, you can keep your schedules organized.

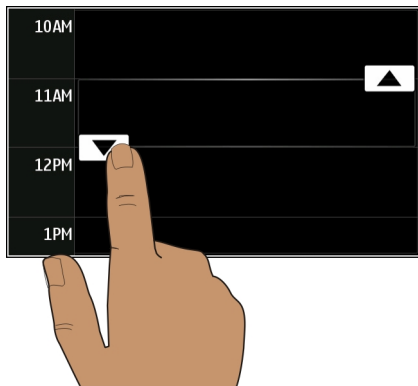
#### Add a calendar entry

Save your important appointments to your calendar as calendar entries.

On the home screen, select the date.

- 1 Select (**Tap to create entry**), or if there are existing entries, tap the area below an entry. The calendar entry type is meeting by default.
- 2 Fill in the fields.
- 3 To repeat the calendar entry at regular intervals, select  and the time interval. Select **Repeat until**, and enter the end date.
- 4 Select **Done**.

**Tip:** You can also add a calendar entry in the day view. Select and hold the starting time, and drag the arrows to set the duration.



### View your schedule for the week

You can browse your calendar entries in different views. To easily check all the entries for a particular week, use the week view.

On the home screen, select the date.

Select the number of the desired week.

**Tip:** To increase or decrease the size of the viewable area, place two fingers on the screen, and slide them apart or together.

### Browse your calendar in different views

Want to see all your calendar entries for a particular day? You can browse your calendar entries in different views.

On the home screen, select the date.



Select **Options** > **Change view** and the desired view.

**Tip:** To go to the previous or next day, week, or month, in the appropriate view, swipe left or right.

### Add a task to your to-do list

Do you have important tasks to handle at work, library books to return, or maybe an event you want to attend? You can add tasks (to-do notes) to your calendar. If you have a particular deadline, set a reminder.

On the home screen, select the date.


- 1 Select **(Tap to create entry)**, or if there are existing entries, tap the area below an entry.
- 2 Select the entry type field , and select **To-do note** as the entry type.
- 3 Fill in the fields.
- 4 To add a reminder for the task, select .
- 5 Select **Done**.

### Send a meeting request

You can create meeting requests, and send them to the participants.

On the home screen, select the date.


Before you can create and send a new meeting request, you need to set up a mailbox.

- 1 In a calendar view, select and hold a calendar entry, and from the pop-up menu, select **Send > Via mail**.
- 2 Add the meeting participants as recipients of the request mail.
- 3 To send the request, select .

### Remember a birthday

You can add a reminder for birthdays and other special dates. The reminders are repeated annually.

On the home screen, select the date.

- 1 Go to the desired date, and select **(Tap to create entry)**, or if there are existing entries, tap the area below an entry.
- 2 Select the entry type field , and select **Anniversary** as the entry type.
- 3 Fill in the fields, and select **Done**.

### Use separate calendars for work and free time

You can have more than one calendar. Create one for work and another for your free time.

On the home screen, select the date.

#### Create a new calendar


- 1 Select **Options > Manage calendars**.
- 2 Select **Options > Create new calendar**.
- 3 Enter a name, and set a color code for the calendar.

- 4 Define the visibility for the calendar. When a calendar is hidden, the calendar entries and reminders are not displayed in different calendar views or on the home screen.
- 5 Select **Done**.

### **Edit the settings for a calendar**

- 1 In the Manage calendars view, select the desired calendar.
- 2 Change the name, color, and visibility.
- 3 Select **Done**.

### **Add an entry to a particular calendar**


- 1 When adding a calendar entry, select  and the calendar.
- 2 Select **Done**.

Color codes indicate which calendar an entry belongs to.

### **Add the location to a calendar entry**

Do you have an appointment in a place you have never visited? You can add the location information to your calendar entry.

On the home screen, select the date.

- 1 Select (**Tap to create entry**), or if there are existing entries, tap the area below an entry.
- 2 Select  **Add location**, and select the location in the Maps application. You can also manually enter the location in the text field.
- 3 Select **Done**.

## **Office**

### **Quickoffice**

#### **About Quickoffice**



Select **Menu** > **Applications** > **Office** > **Quickoffice**.

Quickoffice consists of the following:

- Quickword for viewing Microsoft Word documents
- Quicksheet for viewing Microsoft Excel worksheets
- Quickpoint for viewing Microsoft PowerPoint presentations

Not all file formats or features are supported.

To buy the editor version of Quickoffice, select **Updates and upgrades**.

## Read Microsoft Word, Excel, and PowerPoint documents

You can view Microsoft Office documents, such as Word documents, Excel worksheets, or PowerPoint presentations.

Select **Menu > Applications > Office > Quickoffice.**

### Open a file

Select **Browse files** and the memory where the file is stored, browse to the correct folder, and select the file.

### Sort files

Select **Options > Sort by.**

Not all formats or features are supported.

## Read PDF documents



With Adobe Reader, you can read PDF documents.

Select **Menu > Applications > Office > Adobe Reader.**

### Open a file

Select the memory where the file is stored, browse to the correct folder, and select the file.

## Make a calculation



Select **Menu > Applications > Office > Calculator.**

- 1 Enter the first number of the calculation.
- 2 Select a function, such as add or subtract.
- 3 Enter the second number of the calculation.
- 4 Select =.

### Save or retrieve the result of a calculation

Select **Options > Memory > Save or Recall.**

## Write notes

### About Notes



Select **Menu > Applications > Office > Notes.**

You can write notes, such as meeting memos, and save received plain text files (TXT files) to the Notes application.

### **Make a shopping list**

Shopping lists on paper are easy to lose. Instead of writing them on paper, you can make your shopping lists with Notes. This way, you always have the list with you! You can also send the list to, for example, a family member.

Select **Menu** > **Applications** > **Office** > **Notes**.

- 1 Select **Options** > **New note**.
- 2 Enter text in the note field.

### **Send the list**

Open the note, and select **Options** > **Send** and the sending method.

### **Translate words from one language to another**



You can translate words from one language to another. Not all languages may be supported.

Select **Menu** > **Applications** > **Office** > **Dictionary**.

- 1 Enter text in the search field. Suggestions of words to translate are displayed.
- 2 Select the word from the list.

### **Change the source or target language**

Select **Options** > **Languages** > **Source** or **Target**.

### **Download more languages from the internet**

Select **Options** > **Languages** > **Download languages**.

English is preinstalled, and you can add two additional languages.

### **Open or create zip files**

You can open and extract files from zip files. You can also create new zip files, to store and compress files.



Select **Menu** > **Applications** > **Office** > **Zip**.

You can save the zip files in the device memory or on a memory card.

### Access your company intranet



You can use your phone to connect to your company intranet.

Select **Menu > Applications > Office > Intranet**.

- 1 Select **Options > Settings**. For the relevant settings, contact your system administrator. You must also define a VPN access point.
- 2 Connect to the intranet.

**Tip:** If you have several intranet destinations, for example, partner extranets, defined in Connection settings, to define which intranet to browse, select **Manual connection**.

## Connectivity

### Internet connections

#### Define how your device connects to the internet

Your device automatically checks for and connects to an available known network when a network connection is needed. Selection is based on the connection settings, unless there are application-specific settings applied.

Select **Menu > Settings and Connectivity > Settings**.

#### Automatically switch to a known Wi-Fi connection when available

Select **Switch to Wi-Fi > Known Wi-Fis only**.

You can also connect to Wi-Fi networks manually using the Wi-Fi wizard application.

#### Only use a Wi-Fi connection

For Wi-Fi connections when in your home network, select **Data use in home country > Wi-Fi network only**. For Wi-Fi connections when outside your home network, select **Data use when abroad > Wi-Fi network only**.

#### Automatically use a packet data connection when in your home network

Select **Data use in home country > Automatic**.

To set the device to request confirmation before connecting, select **Data use in home country > Always ask**.

#### Request confirmation before using a packet data connection when outside your home network

Select **Data use when abroad > Always ask**.

To set the device to automatically connect, select **Data use when abroad > Automatic**. Opening connections when abroad can raise data transfer costs substantially.

### Change access point priority for the internet connection

- 1 Select **Destinations > Internet**.
- 2 Select and hold an access point, and from the pop-up menu, select **Change priority**.
- 3 Tap the position in the list to move the access point to.

**Example:** If a Wi-Fi access point is ranked above a packet data access point in the list, the device will always try to first connect to the Wi-Fi access point, only connecting to the packet data access point if the Wi-Fi is not available.

### Create a new access point

Select **Options > New access point**.

## Wi-Fi

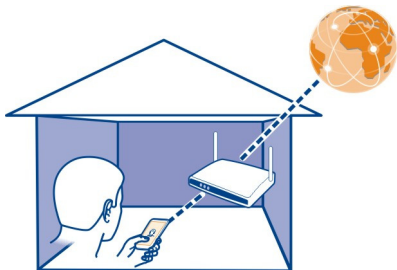
### About Wi-Fi connections

 Select **Menu > Settings and Connectivity > Wi-Fi**.

The Wi-Fi wizard application helps you connect to a Wi-Fi network and manage your Wi-Fi connections.

### Connect to a Wi-Fi network at home

To help save data costs, connect to your home Wi-Fi network when you are at home and want to browse the web on your device.



- 1 Select **Menu > Settings and Connectivity > Wi-Fi**.

- 2 Select and hold your home Wi-Fi network, and from the pop-up menu, select **Start web browsing**.

If your home Wi-Fi network is secured, enter the passcode. If your home Wi-Fi network is hidden, select **Other (hidden netw.)**, and enter the network name (service set identifier, SSID).

### Close the Wi-Fi connection

Select and hold the connection, and from the pop-up menu, select **Disconnect Wi-Fi netw..**

### Connect to a Wi-Fi network on the move

Connecting to a Wi-Fi is a handy way of accessing the internet when not at home. Connect to public Wi-Fi networks in public places, such as a library or internet café.

- 1 Select **Menu > Settings and Connectivity > Wi-Fi**.
- 2 Select and hold the desired Wi-Fi connection, and from the pop-up menu, select **Start web browsing**.

## Bluetooth

### About Bluetooth connectivity

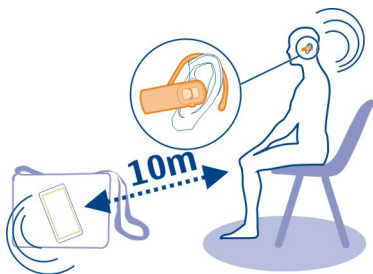


Select **Menu > Settings and Connectivity > Bluetooth**.

With Bluetooth connectivity, you can make a wireless connection to other compatible devices, such as cellular phones, computers, headsets, and car kits.

You can use the connection to send items from your device, transfer files from your compatible PC, and print files with a compatible printer.

Since devices with Bluetooth wireless technology communicate using radio waves, they do not need to be in direct line-of-sight. However, they must be within 10 meters (33 feet) of each other, although the connection may be subject to interference from obstructions such as walls or from other electronic devices.



When the device is locked, only connections to authorized devices are possible.

### Connect to a wireless headset

With a wireless headset you can answer a call even if your device is not directly at hand, and you can have your hands free, for example, to continue working at your computer during a call. Wireless headsets are available separately.

- 1 Select **Menu > Settings and Connectivity > Bluetooth > On**.
- 2 Switch the headset on.
- 3 To pair your device and the headset, open the **Paired devices** tab.
- 4 Select the headset.  
If the headset is not displayed in the list, to search for it, select **Options > New paired device**.
- 5 You may need to enter a passcode. For details, see the user guide of the headset.

### Send a picture or other content to another device using Bluetooth

You can use Bluetooth to send pictures, videos, business cards, calendar entries, and other content to your friend's compatible devices and to your computer.

You can have several Bluetooth connections active at a time. For example, if you are connected to a compatible headset, you can also send files to another compatible device at the same time.

- 1 Select and hold the item, for example, a picture. From the pop-up menu, select **Send > Via Bluetooth**.
- 2 Select the device to connect to. If the desired device is not displayed, to search for it, select **More devices**. When searching, Bluetooth devices within range are displayed.

- 3 If the other device requires a passcode, enter the passcode. The passcode, which you can define yourself, must be entered in both devices. The passcode in some devices is fixed. For details, see the user guide of the device.  
The passcode is valid only for the current connection.
- 4 If you connect to a device frequently, to set it as authorized, accept the authorization query **Authorize device to make connections automatically?** when pairing.  
When a device is authorized, you do not have to enter the passcode every time.

### **Connect to a car kit using remote SIM mode**

With remote SIM mode, a compatible car kit can use the SIM card of your device.

Select **Menu > Settings and Connectivity > Bluetooth**.

Before remote SIM mode can be activated, your device and accessory must be paired. Initiate the pairing from the car kit accessory.


- 1 To activate Bluetooth, select **Bluetooth > On**.
- 2 To activate remote SIM mode in your device, select **Remote SIM mode > On**.
- 3 Activate Bluetooth in the car kit accessory.

When remote SIM mode is activated, **Remote SIM mode** is displayed on the home screen. The connection to the wireless network is closed, and you cannot use SIM card services or features that require cellular network coverage.

To make or receive calls when in remote SIM mode, you need to have a compatible accessory, such as a car kit, connected to your device.

Your device will only allow emergency calls in this mode.

### **Deactivate remote SIM mode**

Press and hold the power key , and select **Exit remote SIM mode**.

### **Block a device**

You can prevent devices from creating a Bluetooth connection to your device.

Select **Menu > Settings and Connectivity > Bluetooth**.

Open the Paired devices tab, select and hold the device you want to block, and from the pop-up menu, select **Block**.

### **Remove a device from the blocked devices list**

Open the Blocked devices tab, select and hold the device you want to remove from the list, and from the pop-up menu, select **Delete**.

If you reject a pairing request from another device, you are asked if you want to add the device to the list of blocked devices.

### Protect your device

When Bluetooth is activated in your device, you can control who can find and connect to your device.

Select **Menu** > **Settings and Connectivity** > **Bluetooth**.

### Prevent others from detecting your device

Select **My phone's visibility** > **Hidden**.

When your device is hidden, others cannot detect it. However, paired devices can still connect to your device.

### Deactivate Bluetooth


Select **Bluetooth** > **Off**.

Do not pair with or accept connection requests from an unknown device. This helps to protect your device from harmful content.

### USB data cable

#### Copy a picture or other content between your device and a computer


You can use a USB data cable to copy pictures and other content between your device and a computer.

- 1 To make sure that Media transfer is set as the USB mode, select **Menu** > **Settings and Connectivity** > **USB** > **Media transfer**.
- 2 Use a compatible USB  data cable to connect your device to a computer.  
The device is displayed as a portable device on your computer. If Media transfer mode does not work on your computer, use Mass storage mode instead.
- 3 Use the file manager of the computer to copy the content.


### Change the USB mode

For best results when copying content or synchronizing your device with your computer, activate the appropriate USB mode when using a USB data cable to connect to various devices.

Select **Menu** > **Settings and Connectivity** > **USB** and from the following:


 **Nokia Ovi Suite** — Connect your device to a compatible computer that has Nokia Ovi Suite installed. In this mode, you can synchronize your device with Ovi Suite and use other Ovi Suite features.

This mode is activated automatically when you open the Ovi Suite application.

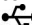
 **Mass storage** — Connect your device to a compatible computer that does not have Ovi Suite installed. Your device is recognized as a USB flash memory. You can also connect your device to other devices, such as a home or car stereo, to which you can connect a USB drive.

While connected to a computer in this mode, you may not be able to use some of the device applications.

The memory card in your device cannot be accessed by the other device.

 **Media transfer** — Connect your device to a compatible computer that does not have Ovi Suite installed. Music protected by digital rights management (DRM) must be transferred in this mode. Some home entertainment systems and printers can also be used in this mode.

 **Conn. PC to net** — Connect your device to a compatible computer, and use the device as a wireless modem. The computer connects to the internet automatically.

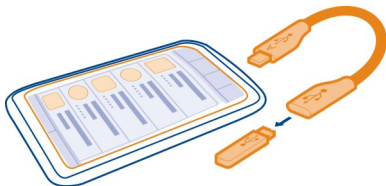
**Tip:** When the USB cable is connected, you can change the USB mode in most views. In the top right corner, select  > **USB**.

### Connect a USB mass storage device

You can use a USB On-The-Go (OTG) adapter to connect your device to a compatible USB memory stick or hard drive.

#### Connect a memory stick

- 1 Connect the micro USB end of the USB OTG adapter (sold separately) to the USB port in your device.
- 2 Connect a memory stick to the USB OTG adapter.



The File manager application opens, and the memory stick is displayed as a mass memory.

## Copy or move a file

In File mgr., select and hold the file you want to copy or move, and from the pop-up menu, select the desired option and the target folder.

If you connect a hard drive that requires more than 200 mA of power, use an external power source for the hard drive.

## VPN connections

Select **Menu** > **Settings and Connectivity** > **Settings** > **VPN**.

You need a virtual private network (VPN) connection to, for example, browse your company intranet or access your work mail remotely.

VPN policies define how data is encrypted and how your company authenticates your device. To configure the VPN client, certificates, and policies, contact your company's IT department. After installing a policy, a VPN connection method is automatically added to an intranet destination.

For more information, search for mobile VPN at [www.nokia.com](http://www.nokia.com).

## Close a network connection

If several applications are using an internet connection, you can use the Connection manager application to close some or all network connections.

Select **Menu** > **Settings and Connectivity** > **Connection mgr.**.

Select and hold the connection, and from the pop-up menu, select **Disconnect**.

In the active data connections view, you can see your current network connections.  indicates a packet data connection, and  indicates a Wi-Fi connection.

## View details for a connection

Select and hold the connection, and from the pop-up menu, select **Details**.

Details, such as the amount of transferred data and connection duration, are displayed.

**Tip:** In most views, to open the Connection manager application, select the notification area in the top right corner and  > **Connection mgr.**

## Store your files on a remote drive

If you want to back up your data or save space on your device, you can use a remote drive for storing and managing your files.

Select **Menu** > **Settings and Connectivity** > **Remote drives**.

## 100 Device management

---

You may receive the remote drive settings as a configuration message from your service provider. Open the message, and save the settings.

The service may be chargeable. For information on availability and possible costs, contact your service provider.

### Connect to a remote drive

Select and hold the remote drive, and from the pop-up menu, select **Connect**.

### Add a new remote drive

- 1 Select **Options** > **New drive**.
- 2 Enter the name of the remote drive.
- 3 Enter the web address of the remote drive, including the port number.
- 4 To select the access point to use to connect to the remote drive, select **Access point** > **User defined**. If you select **Ask when needed**, you are prompted for the destination or access point every time the application connects to the network.
- 5 Enter your user name and password, if required by the remote drive service.

### Modify the settings of an existing remote drive

Select **Remote drives** and the desired drive.

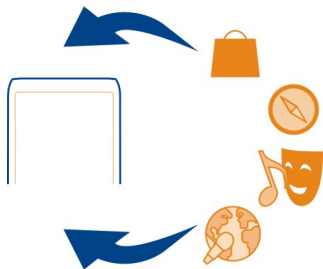
Use the **File manager** application to access your remote drives and manage stored files.

## Device management

### Keep your device software and applications up to date

#### About device software and application updates

With device software updates and application updates, you can get new features and enhanced functions for your device. Updating the software may also improve your device performance.



It is recommended that you back up your personal data before updating your device software.

Using the service or downloading content may cause transfer of large amounts of data, which may result in data traffic costs.

Make sure that the device battery has enough power, or connect the charger before starting the update.

After the update, the instructions in the user guide may no longer be up to date.

### Update device software and applications using your device



You can check if there are updates available for your device software or for individual applications, and then download and install them to your device (network service). You can also set your device to automatically check for updates and notify you when important or recommended updates are available.

Select **Menu** > **Applications** > **Tools** > **SW update**.

If there are available updates, select which updates to download and install, and select



### Set your device to automatically check for updates

Select **Options** > **Settings** > **Auto-check for updates**.

### Update device software using your PC

You can use the Nokia Ovi Suite PC application to update your device software. You need a compatible PC, a high-speed internet connection, and a compatible USB data cable to connect your device to the PC.

To get more information and to download the Nokia Ovi Suite application, go to [www.ovi.com/suite](http://www.ovi.com/suite).

### Manage files

#### About File manager



Select **Menu** > **Applications** > **Office** > **File mgr.**

With File manager, you can browse, manage, and open files in your device. You can also view and manage files on a compatible inserted memory card.

### View the files stored on your device

Select **Menu** > **Applications** > **Office** > **File mgr.** and the desired memory.

The folders on the root of the memory are displayed.

### Organize files

You can create new folders, to help organize your files. This can make it easier to back up or upload your content. Within folders, you can copy, move, or delete files and subfolders.

Select **Menu > Applications > Office > File mgr..**

#### Create a new folder

In the folder where you want to create a subfolder, select **Options > New folder.**

#### Copy or move a file to a folder

Select and hold the file, and from the pop-up menu, select the appropriate option.

#### Delete a file from a folder

Select and hold the file, and from the pop-up menu, select the appropriate option.

**Tip:** To copy, move, or delete several files at the same time, select **Options > Mark multiple items.**

### Back up files

Select **Menu > Applications > Office > File mgr. and Backup and restore.**

It is recommended that you back up the device memory regularly to a compatible computer or memory card.

**Tip:** If you have DRM-protected content, use Nokia PC Suite to back up both the licenses and the content to your computer.

### Password protect your memory card

Want to protect the memory card against unauthorized use? You can set a password to protect the data.

- 1 Select **Menu > Applications > Office > File mgr..**
- 2 Select and hold the memory card.
- 3 From the pop-up menu, select **Set password**, and enter a password.  
Keep the password secret and in a safe place, separate from the memory card.

### Format a memory card

Want to delete all content from your memory card? When you format a memory card, all the data on it is deleted.

- 1 Select **Menu** > **Applications** > **Office** > **File mgr.**
- 2 Select and hold the memory card, and from the pop-up menu, select **Format**.

### **Increase available memory for more content**

Do you need to increase the available device memory, so you can install more applications, and add more content?

Transfer data to a compatible memory card (if available) or to a compatible computer.

You can also remove the following if no longer needed:

- Text, multimedia, and mail messages
- Contact entries and details
- Applications
- Installation files (.sis or .six) for installed applications. Back up the files to a compatible computer.
- Pictures and videos in Photos. Back up the files to a compatible computer.

**Tip:** If expired trial or demo applications are installed, remove them.

### **Manage applications**

#### **About Application manager**

 Select **Menu** > **Settings** and **Application manager**.

With Application manager you can view details of installed applications, remove applications, and define installation settings.

You can install the following types of applications:

- Java™ ME applications that have the .jad or .jar file extension
- Applications, compatible with the Symbian operating system, that have the .sis or .six file extension
- Widgets that have the .wgz file extension

Only install applications that are compatible with your device.

### **Remove an application from your device**

You can remove installed applications that you no longer want to keep or use, to increase the amount of available memory.

Select **Menu** > **Settings** and **Application manager**.

- 1 Select **Installed apps**.

- 2 Select and hold the application to remove, and from the pop-up menu, select **Uninstall**.

If you remove an application, you can only reinstall it, if you have the original installation file or a full backup of the removed application. You may not be able to open files created with a removed application.

If an installed application depends on a removed application, the installed application may stop working. For details, see the user documentation of the installed application.

The installation files may use large amounts of memory and prevent you from storing other files. Use Nokia Ovi Suite to back up installation files to a compatible PC, then file manager to remove the installation files from the device memory.

### Synchronize content About Sync

 **Select Menu > Settings and Connectivity > Data transfer > Sync.**

With the Sync application, you can synchronize your contacts, notes, and other content between your device and a remote server. After the synchronization, you have a backup of your important data on the server.



### Synchronize content between your device and a remote server

Would you like to have your calendar, notes, and other content backed up and at hand, whether you are sitting by your computer or on the go with your cellular phone? With the Sync application, you can synchronize the important content between your device and a remote server.

**Select Menu > Settings and Connectivity > Data transfer > Sync.**

You may receive synchronization settings as a configuration message from your service provider. Your synchronization settings are saved in a synchronization profile. When

you open the application, the default or previously used synchronization profile is displayed.

### **Include or exclude content types**

Select a content type.

### **Synchronize data**

Select **Options** > **Synchronize**.

## **About Ovi Sync**



Select **Menu** > **Applications** > **Tools** > **Ovi Sync**.

With Ovi Sync, you can synchronize contacts, calendar entries, and notes between your device and Ovi by Nokia. This way you always have a backup of your important content. To use Ovi Sync, you need a Nokia account. If you do not have a Nokia account, create one at [www.ovi.com](http://www.ovi.com).

If you use Ovi Sync to automatically synchronize your contacts with Ovi, do not allow synchronization with any other service, such as Mail for Exchange, as there may be conflicts.

## **Back up content to Ovi**

Would you like to have your calendar entries, notes, and other content on your device backed up on Ovi? With the Ovi Sync application, you can synchronize the content between your device and Ovi manually or automatically.

Select **Menu** > **Applications** > **Tools** > **Ovi Sync**.

When you open the application for the first time, the synchronization wizard helps you define the settings and select the content to synchronize.

### **Define the content to synchronize**

Select **Options** > **Sync settings** > **Items to synchronize**.

### **Synchronize manually**

Select **Synchronize**.

### **Synchronize automatically**

- 1 To activate automatic synchronization, select **Options** > **Sync settings** > **Auto-sync**.
- 2 To define how often to synchronize, select **Options** > **Sync settings** > **Scheduled sync interval**.

### Copy contacts or pictures between devices

With the Phone switch application, you can use Bluetooth to synchronize and copy content between two compatible Nokia devices, free of charge.

Select **Menu > Settings > Connectivity > Data transfer > Phone switch**.

1 Select from the following:



— Synchronize content between two devices.



— Copy content from another device.



— Copy content to another device.

2 Select the device you want to connect to, and pair the devices. Bluetooth needs to be activated.

3 If the other device requires a passcode, enter the passcode. The passcode, which you can define yourself, must be entered in both devices. The passcode in some devices is fixed. For details, see the user guide of the device.

The passcode is valid only for the current connection.

4 Select the content and **OK**.

**Tip:** If you save the details, it is easier to later exchange the same content with the same device.

### Protect your device

#### Set your device to lock automatically

Want to protect your device against unauthorized use? Define a lock code, and set your device to lock itself automatically when you're not using it.


1 Select **Menu > Settings and Phone > Phone management > Security settings > Phone and SIM card**.

2 Select **Lock code**, and enter a lock code. A minimum of 5 characters is required, and numbers, symbols, and upper and lower case letters can be used.

Keep the lock code secret and in a safe place separate from your device. If you forget the lock code and your device is locked, your device will require service. Additional charges may apply, and all the personal data in your device may be deleted. For more information, contact a Nokia Care point or your device dealer.


3 Select **Phone autolock period**, and define the length of time after which the device is locked automatically.

#### Lock your device manually

Press and hold the power key , and select **Lock phone**.

Enter the lock code.

## Unlock your device

Press the power key  or the menu key, and select **Unlock**.

Enter the lock code.

**Tip:** To switch between the numeric and alphanumeric keypad, press and hold #.

## Lock your device remotely

Forgot your device at work and want to lock it to prevent unauthorized use? You can lock your device remotely using a predefined text message. You can also lock the memory card remotely.

### Enable remote locking

- 1 Select **Menu > Settings and Phone > Phone management > Security settings > Phone and SIM card > Remote phone locking > Enabled**.
- 2 Enter the text message content. It can be 5-20 characters, and both upper and lower case letters can be used.
- 3 Enter the same text again to verify it.
- 4 Enter the lock code.

### Send the lock message

To lock the device remotely, write the predefined text, and send it to your device as a text message.


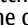
To unlock your device, you need the lock code.

## Find more help

### Support

When you want to learn more about how to use your product or you are unsure how your device should function, go to [www.nokia.com/support](http://www.nokia.com/support), or using a cellular phone, [nokia.mobi/support](http://nokia.mobi/support). You can also read the in-device guide. Select **Menu > Applications > User guide**.

If this does not resolve your issue, do one of the following:

- Reboot your device. Press and hold the power key  and the menu key for about 8 seconds. The device vibrates three times and switches off. To switch your device on again, press and hold the power key  until the device vibrates.
- Restore the original factory settings
- Update your device software

If your issue remains unsolved, contact Nokia for repair options. Go to [www.nokia.com/repair](http://www.nokia.com/repair), or in Latin America, [www.nokia-latinoamerica.com/centrosdeservicio](http://www.nokia-latinoamerica.com/centrosdeservicio). Before sending your device for repair, always back up your device data.

For additional product support information, see the warranty and reference leaflet included with your Nokia device.

### Access codes



<p>PIN or PIN2 code (4-8 digits)</p>	<p>These protect your SIM card against unauthorized use or are required to access some features.</p> <p>You can set your device to ask for the PIN code when you switch it on.</p> <p>If not supplied with your SIM card or you forget the codes, contact your service provider.</p> <p>If you enter the code incorrectly three times in a row, you need to unblock the code with the PUK or PUK2 code.</p>
<p>PUK or PUK2 code (8 digits)</p>	<p>These are required to unblock a PIN or PIN2 code.</p> <p>If not supplied with your SIM card, contact your service provider.</p>
<p>IMEI number (15 digits)</p>	<p>This is used to identify valid devices in the network. The number can also be used to block, for example, stolen devices.</p> <p>To view your IMEI number, dial <b>*#06#</b>.</p>
<p>Lock code (security code) (min. 4 digits or characters)</p>	<p>This helps you protect your device against unauthorized use.</p> <p>You can set your device to ask for the lock code that you define.</p> <p>Keep the code secret and in a safe place, separate from your device.</p> <p>If you forget the code and your device is locked, your device will require service. Additional charges may apply, and all the personal data in your device may be deleted.</p> <p>For more information, contact a Nokia Care Point or your device dealer.</p>

The personal unblocking key (PUK) code and the universal personal unblocking key (UPUK) code (8 digits) are required to change a blocked PIN code and UPIN code, respectively. The PUK2 code (8 digits) is required to change a blocked PIN2 code. These

codes are not supplied with the SIM card. Contact your local service provider for the codes.

## Troubleshooting

### If your device stops responding

Reboot your device. Press and hold the power key  and the menu key for about 8 seconds. The device vibrates three times and switches off. To switch your device on again, press and hold the power key  until the device vibrates.

No content, such as contacts or messages, is deleted.

### Restore original settings

If your device is not working properly, you can reset some settings to their original values.

- 1 End all active calls and connections.
- 2 Select **Menu > Settings and Phone > Phone management > Factory settings > Restore**.
- 3 Enter the lock code.

This does not affect documents or files stored on your device.

After restoring the original settings, the device switches off, and then on again. This may take longer than usual.

### If the device memory is full


If your device has the following messages, you need to close applications, or move or delete items:

- **Not enough memory to perform operation. Delete some data first.**
  - **Memory low. Delete some data from phone memory.**
- 1 Make sure all applications are closed. Select **Options > Show open applications**. For each application you want to close, select the X icon in the top right corner of the page.
  - 2 Move content that you want to keep to a compatible memory card (if available) or to a compatible computer. If possible, install applications to the memory card, rather than the device memory.
  - 3 Delete items one by one, beginning with the smallest items.

## 110 Product and safety information

---

### If the message indicator is blinking



If the message indicator  is blinking in the home screen, the maximum number of messages are stored on your device. Delete or move some messages.

The number of messages that can be stored on the SIM card is considerably lower than the number that can be stored in the device memory. You can use Nokia Ovi Suite to save messages to a compatible computer.

### If a contact appears twice in the contacts list

If a contact appears twice in your contacts list, you can merge the two contacts into one. Select **Options > Merge contacts**.

### Unreadable characters while browsing the web

If unreadable characters are displayed, select **Menu > Web and  >  > Page > Default encoding** and the correct encoding for the character set of the language.

### Prepare your device for recycling

If you buy a new device, or otherwise want to dispose of your device, Nokia recommends that you recycle your device. Beforehand, remove all personal information and content from your device.

### Remove all content and restore settings to the default values

- 1 Back up the content you want to keep to a compatible memory card (if available) or to a compatible computer.
- 2 Close all active connections and calls.
- 3 Select **Menu > Settings and Phone > Phone management > Factory settings > Delete data and restore**.
- 4 Your device switches off and then on again. Check carefully that all your personal content, such as contacts, pictures, music, videos, notes, messages, mail, presentations, games and other installed applications have been removed.  
Content and information stored on the memory card or SIM card is not removed.

## Product and safety information

### Network services and costs

Your device is approved for use on the WCDMA 850, 900, 1700, 1900, 2100 MHz and GSM/EDGE 850, 900, 1800, 1900 MHz networks. To use the device, you need a subscription with a service provider.

Using network services and downloading content to your device requires a network connection and may result in data traffic costs. Some product features require support from the network, and you may need to subscribe to them.

### Take care of your device

Handle your device, battery, charger and accessories with care. The following suggestions help you protect your warranty coverage.

- Keep the device dry. Precipitation, humidity, and all types of liquids or moisture can contain minerals that corrode electronic circuits. If your device gets wet, allow the device to dry.
- Do not use or store the device in dusty or dirty areas. Moving parts and electronic components can be damaged.
- Do not store the device in high temperatures. High temperatures can shorten the life of the device, damage the battery, and warp or melt plastics.
- Do not store the device in cold temperatures. When the device warms to its normal temperature, moisture can form inside the device and damage electronic circuits.
- Do not attempt to open the device other than as instructed in the user guide.
- Unauthorized modifications may damage the device and violate regulations governing radio devices.
- Do not drop, knock, or shake the device. Rough handling can break internal circuit boards and mechanics.
- Only use a soft, clean, dry cloth to clean the surface of the device.
- Do not paint the device. Paint can clog the moving parts and prevent proper operation.
- Keep your device away from magnets or magnetic fields.
- To keep your important data safe, store it in at least two separate places, such as your device, memory card, or computer, or write down important information.

During extended operation, the device may feel warm. In most cases, this condition is normal. If you suspect the device is not working properly, take it to the nearest authorized service facility.

### Recycle

Always return your used electronic products, batteries, and packaging materials to dedicated collection points. This way you help prevent uncontrolled garbage disposal and promote the recycling of materials. Check product environmental information and how to recycle your Nokia products at [www.nokia.com/werecycle](http://www.nokia.com/werecycle), or with a cellular phone, [nokia.mobi/werecycle](http://nokia.mobi/werecycle).

### Batteries and chargers


#### Battery and charger information

This device has an internal, nonremovable, rechargeable battery. Do not attempt to remove the battery from the device as you may damage the device. Take the device to the nearest authorized service facility for replacement of the battery.

This device is intended for use when supplied with power from the following chargers: AC-10. The exact charger model number may vary depending on the type of plug. The plug variant is identified by one of the following: E, X, AR, U, A, C, K, or B.

The battery can be charged and discharged hundreds of times, but it will eventually wear out. When the talk and standby times are noticeably shorter than normal, take the device to the nearest authorized service facility for battery replacement.

#### Battery safety

 **Note:** The battery in your device is non-removable, so refer to the battery-related statements as applicable to your device.

When you unplug a charger or an accessory, hold and pull the plug, not the cord.

When your charger is not in use, unplug it from the electrical plug and the device. Do not leave a fully charged battery connected to a charger, as overcharging may shorten the battery's lifetime. If left unused, a fully charged battery will lose its charge over time.

Always keep the battery between 15°C and 25°C (59°F and 77°F). Extreme temperatures reduce the capacity and lifetime of the battery. A device with a hot or cold battery may not work temporarily.

Accidental short-circuiting can happen when a metallic object touches the metal strips on the battery. Short-circuiting may damage the battery or the connecting object.

Do not dispose of batteries in a fire as they may explode. Dispose of batteries according to local regulations. Recycle when possible. Do not dispose as household garbage.

## 112 Product and safety information

---


Do not dismantle, cut, open, crush, bend, puncture, or shred cells or batteries. If a battery leaks, do not let battery liquid touch skin or eyes. If this happens, immediately flush the affected areas with water, or seek medical help.


Do not modify, remanufacture, attempt to insert foreign objects into the battery, or immerse or expose it to water or other liquids. Batteries may explode if damaged.

Use the battery and charger for their intended purposes only. Improper use, or use of unapproved batteries or chargers may present a risk of fire, explosion, or other hazard, and may invalidate any approval or warranty. If you believe the battery or charger is damaged, take it to a service center for inspection before continuing to use it. Never use a damaged battery or charger. Only use the charger indoors.

### Additional safety information

#### Make an emergency call

- 1 Make sure the device is switched on.
- 2 Check for adequate signal strength. You may also need to do the following:
  - Insert a SIM card.
  - Deactivate call restrictions you have activated for your device, such as call restricting, fixed dialing, or closed user group.
  - Make sure the offline or flight profile is not activated.
  - If the device screen and keys are locked, unlock them.
- 3 Press the menu key repeatedly, until the home screen is displayed.
- 4 Select Call.
- 5 Enter the official emergency number for your present location. Emergency call numbers vary by location.
- 6 Select 
- 7 Give the necessary information as accurately as possible. Do not end the call until given permission to do so.

 **Important:** Activate both cellular and internet calls, if your device supports internet calls. The device may attempt to make emergency calls both through cellular networks and through your internet call service provider. Connections in all conditions cannot be guaranteed. Never rely solely on any wireless device for essential communications like medical emergencies.

#### Small children

Your device and its accessories are not toys. They may contain small parts. Keep them out of the reach of small children.

#### Medical devices

Operation of radio transmitting equipment, including wireless phones, may interfere with the function of inadequately protected medical devices. Consult a physician or the manufacturer of the medical device to determine whether they are adequately shielded from external RF energy. Switch off your device when regulations posted instruct you to do so, for example, in hospitals.

#### Implanted medical devices

Manufacturers of medical devices recommend a minimum separation of 15.3 centimeters (6 inches) between a wireless device and an implanted medical device, such as a pacemaker or implanted cardioverter defibrillator, to avoid potential interference with the medical device. Persons who have such devices should:

- Always keep the wireless device more than 15.3 centimeters (6 inches) from the medical device.
- Not carry the wireless device in a breast pocket.
- Hold the wireless device to the ear opposite the medical device.
- Turn the wireless device off if there is any reason to suspect that interference is taking place.
- Follow the manufacturer directions for the implanted medical device.

If you have any questions about using your wireless device with an implanted medical device, consult your health care provider.

### Accessibility solutions

Nokia is committed to making mobile phones easy to use for all individuals, including those with disabilities. For more information, visit the Nokia website at [www.nokiaaccessibility.com](http://www.nokiaaccessibility.com).

### Hearing



#### Warning:

When you use the headset, your ability to hear outside sounds may be affected. Do not use the headset where it can endanger your safety.

Some wireless devices may interfere with some hearing aids.

### Nickel



**Note:** The surface of this device does not contain nickel in the platings. The surface of this device contains stainless steel.

### Protect your device from harmful content

Your device may be exposed to viruses and other harmful content. Take the following precautions:

- Be cautious when opening messages. They may contain malicious software or otherwise be harmful to your device or computer.
- Be cautious when accepting connectivity requests, browsing the internet, or downloading content. Do not accept Bluetooth connections from sources you do not trust.
- Only install and use services and software from sources that you trust and that offer adequate security and protection.
- Install antivirus and other security software on your device and any connected computer. Only use one antivirus application at a time. Using more may affect performance and operation of the device and/or computer.
- If you access preinstalled bookmarks and links to third party internet sites, take the appropriate precautions. Nokia does not endorse or assume liability for such sites.

### Operating environment

This device meets RF exposure guidelines in the normal use position at the ear or at least 1.5 centimeters (5/8 inch) away from the body. Any carry case, belt clip, or holder for body-worn operation should not contain metal and should position the device the above-stated distance from your body.

To send data files or messages requires a quality connection to the network. Data files or messages may be delayed until such a connection is available. Follow the separation distance instructions until the transmission is completed.

### Vehicles

Radio signals may affect improperly installed or inadequately shielded electronic systems in motor vehicles such as electronic fuel injection, electronic antilock braking, electronic speed control, and air bag systems. For more information, check with the manufacturer of your vehicle or its equipment.

Only qualified personnel should install the device in a vehicle. Faulty installation or service may be dangerous and may invalidate your warranty. Check regularly that all wireless device equipment in your vehicle is mounted and operating properly. Do not store or carry flammable liquids, gases, or explosive materials in the same compartment as the device, its parts, or accessories. Remember that air bags inflate with great force. Do not place your device or accessories in the air bag deployment area.

Switch off your device before boarding an aircraft. The use of wireless devices in an aircraft may be dangerous to the operation of the aircraft and may be illegal.

### Potentially explosive environments

Switch off your device in any area with a potentially explosive atmosphere. Obey all posted instructions. Sparks in such areas could cause an explosion or fire resulting in bodily injury or death. Switch off the device at refueling points such as near gas pumps at service stations. Observe restrictions in fuel depots, storage, and distribution areas; chemical plants; or where blasting operations are in progress. Areas with a potentially explosive atmosphere are often, but not always, clearly marked. They include areas where you would be advised to turn off your vehicle engine, below deck on boats, chemical transfer or storage facilities and where the air contains chemicals or particles such as grain, dust, or metal powders. You should check with the manufacturers of vehicles using liquefied petroleum gas (such as propane or butane) to determine if this device can be safely used in their vicinity.

### Certification information (SAR)

#### This cellular device meets guidelines for exposure to radio waves.

Your cellular device is a radio transmitter and receiver. It is designed not to exceed the limits for exposure to radio waves recommended by international guidelines. These guidelines were developed by the independent scientific organization ICNIRP and include safety margins designed to assure the protection of all persons, regardless of age and health.

The exposure guidelines for cellular devices employ a unit of measurement known as the Specific Absorption Rate or SAR. The SAR limit stated in the ICNIRP guidelines is 2.0 watts/kilogram (W/kg) averaged over 10 grams of tissue. Tests for SAR are conducted using standard operating positions with the device transmitting at its highest certified power level in all tested frequency bands. The actual SAR level of an operating device can be below the maximum value because the device is designed to use only the power required to reach the network. That amount changes depending on a number of factors such as how close you are to a network base station.

The highest SAR value under the ICNIRP guidelines for use of the device at the ear is 0.61 W/kg .

Use of device accessories may result in different SAR values. SAR values may vary depending on national reporting and testing requirements and the network band. Additional SAR information may be provided under product information at [www.nokia.com](http://www.nokia.com).

Your cellular device is also designed to meet the requirements for exposure to radio waves established by the Federal Communications Commission (USA) and Industry Canada. These requirements set a SAR limit of 1.6 W/kg averaged over one gram of tissue. The highest SAR value reported under this standard during product certification for use at the ear is 0.92 W/kg and when properly worn on the body is 1.53 W/kg .

## Copyright and other notices

### DECLARATION OF CONFORMITY

CE 0434 ⚠

Hereby, NOKIA CORPORATION declares that this RM-659 product is in compliance with the essential requirements and other relevant provisions of Directive 1999/5/EC. A copy of the Declaration of Conformity can be found at [http://www.nokia.com/phones/declaration\\_of\\_conformity/](http://www.nokia.com/phones/declaration_of_conformity/).

© 2011 Nokia. All rights reserved.

Nokia, Nokia Connecting People and X7 are trademarks or registered trademarks of Nokia Corporation. Nokia tune is a sound mark of Nokia Corporation. Other product and company names mentioned herein may be trademarks or tradenames of their respective owners.

Reproduction, transfer, distribution, or storage of part or all of the contents in this document in any form without the prior written permission of Nokia is prohibited. Nokia operates a policy of continuous development. Nokia reserves the right to make changes and improvements to any of the products described in this document without prior notice.



Java and all Java-based marks are trademarks or registered trademarks of Sun Microsystems, Inc.

This product is licensed under the MPEG-4 Visual Patent Portfolio License (i) for personal and noncommercial use in connection with information which has been encoded in compliance with the MPEG-4 Visual Standard by a consumer engaged in a personal and noncommercial activity and (ii) for use in connection with MPEG-4 video provided by a licensed video provider. No license is granted or shall be implied for any other use. Additional information, including that related to promotional, internal, and commercial uses, may be obtained from MPEG LA, LLC. See <http://www.mpegla.com>.

To the maximum extent permitted by applicable law, under no circumstances shall Nokia or any of its licensors be responsible for any loss of data or income or any special, incidental, consequential or indirect damages howsoever caused.

The contents of this document are provided "as is." Except as required by applicable law, no warranties of any kind, either express or implied, including, but not limited to, the implied warranties of merchantability and fitness for a particular purpose, are made in relation to the accuracy, reliability or contents of this document. Nokia reserves the right to revise this document or withdraw it at any time without prior notice.

Reverse engineering of software in the device is prohibited to the extent permitted by applicable law. Insofar as this user guide contains any limitations on Nokia's representations, warranties, damages and liabilities, such limitations shall likewise limit any representations, warranties, damages and liabilities of Nokia's licensors.

The availability of products, features, applications and services may vary by region. For more information, contact your Nokia dealer or your service provider. This device may contain commodities, technology or software subject to export laws and regulations from the US and other countries. Diversion contrary to law is prohibited.

Nokia does not provide a warranty for or take any responsibility for the functionality, content, or end-user support of third-party applications provided with your device. By using an application, you acknowledge that the application is provided as is. Nokia does not make any representations, provide a warranty, or take any responsibility for the functionality, content, or end-user support of third-party applications provided with your device.

### FCC/INDUSTRY CANADA NOTICE

Your device may cause TV or radio interference (for example, when using a telephone in close proximity to receiving equipment). The FCC or Industry Canada can require you to stop using your telephone if such interference cannot be eliminated. If you require assistance, contact your local service facility. This device complies with part 15 of the FCC rules. Operation is subject to the following two conditions: (1) This device may not cause harmful interference, and (2) this device must accept any interference received, including interference that may cause undesired operation. Any changes or modifications not expressly approved by Nokia could void the user's authority to operate this equipment.

This product is homologated by Anatel in accordance with the procedures set forth by Resolution No. 242/2000 and meets the applied technical guidelines, including the Specific Absorption Rate limits for exposure to electrical, magnetic and electromagnetic radio frequency fields, according to Resolutions No. 303/2002 and No. 533/2009.

Some operations and features are SIM card and/or network dependent, MMS dependent, or dependent on the compatibility of devices and the content formats supported. Some services are subject to a separate charge.

**Index****Symbols/Numbers**

1-touch dialing 37

**A**

access codes 108

alarm clock 84

anniversary entries 88

antennas 8

applications 22, 34, 101, 103

audio messages 48, 49

**B**

backing up data 102

battery 13

— charging 14, 15

— saving power 28

birthday entries 88

blocking

— device 96

blogs 56

Bluetooth 94, 95, 96, 97

bookmarks 56

browser

  See *web browser*

business cards 47, 95

**C**

cable connection 97

cache memory 55

Calculator 90

Calendar 59

calendar 86, 87, 88, 89

calls 40

— conference 36

— emergency 112

— forwarding 41

— internet calls 39

— last dialed 39

— making 35, 36

— restricting 41, 42

Camera 59

— location information 60

— taking pictures 61

camera

— recording videos 61

— sending pictures 62

— taking pictures 60, 61

Carte SIM 47

charging the battery 14, 15

clock 84, 85, 86

connectivity 99

contacts 44

— adding 45

— copying 16, 47, 106

— editing 45

— favorites 45

— groups 47

— in social networks 58, 59

— pictures 46

— ringtones 46

— saving 45

— searching 35

— sending 47, 95

— synchronizing 48, 104

— troubleshooting 110

— widgets 34

copying content 16, 17, 66, 68, 97, 106

copyright protection 68

customizing your device 17, 30, 31, 32, 33

**D**

data connections 99

— Bluetooth 94

date and time 85

device

— rebooting 109

— setup 17

— switching on/off 15, 109

devices	
— setup	16
dictionary	91
downloads	35
— themes	31
DRM (digital rights management)	68

<b>E</b>	
e-mail	
<i>See mail</i>	
emergency calls	112

<b>F</b>	
factory settings, restoring	109
favorites	45
feeds, news	56
file management	101, 102
FM radio	69, 70
forwarding calls	41

<b>H</b>	
headset	8
help	18
home screen	21, 31, 32, 33, 34, 55

<b>I</b>	
icons	26
images	
<i>See pictures</i>	
IMEI number	108
inbox, messages	49
indicators	26, 110
installing applications	103
internet	
<i>See web browser</i>	
internet calls	39
internet connection	92
intranet	92

<b>J</b>	
Java applications	103

<b>K</b>	
keyboard	23
keyguard	9
keypad	24
keys and parts	6, 7, 8

<b>L</b>	
language settings	51
licenses	68
location information	60, 89
lock code	106, 108
locking	
— device	106
— keys	9
— remotely	107
— screen	9
Log	40
loudspeaker	9

<b>M</b>	
mail	52, 54
— attachments	54
— creating	54
— mailbox	53
— reading and replying to	53
— sending	54
— setup	53
— widgets	55
mailbox	
— voice	41
Maps	71
— browsing	71
— changing views	73
— compass	74
— display elements	72, 80
— downloading maps	73
— driving routes	79
— Favorites	77
— feedback	83
— finding locations	75
— location details	76

— navigating	79, 81
— organizing places	77
— organizing routes	77
— planning routes	82
— positioning	74
— reporting	83
— saving places	76
— saving routes	76
— sharing locations	78
— synchronizing	78
— traffic information	80
— viewing saved places	76
— viewing saved routes	76
— voice guidance	79
— walking routes	81
meeting entries	86, 88
meeting requests	54
memory	101, 110
— clearing	103, 109
memory card	11, 102
menus	34
message reader	51
messages	48, 49, 110
— audio	49
— conversations	50
— sending	48
MMS (multimedia message service)	48
movies	64
multimedia messages	48
multitasking	22
music	66, 68
— playlists	67
My Card	47

**N**

news feeds	56
Nokia account	17
Nokia Ovi Suite	18
Nokia support information	107
Nokia's Ovi services	17
Notes	90, 91

**O**

office applications	89, 90
offline profile	27
Ovi account	
<i>See Nokia account</i>	
Ovi by Nokia	17, 48
Ovi Mail	52
Ovi services	17
Ovi Store	
— buying	35
— downloads	35
Ovi Suite	
<i>See Nokia Ovi Suite</i>	
Ovi Sync	105

**P**

Phone switch	16, 106
phonebook	
<i>See contacts</i>	
Photo editor	63
photographs	
<i>See pictures</i>	
pictures	
— copying	16, 97, 106
— editing	63
— location information	60
— printing	65
— sending	62, 95
— sharing	58
— taking	60, 61
— viewing	62, 63
PIN codes	108
playlists	67
powering device on/off	15
powering on/off	109
printing	65
profiles	29, 30
— creating	30
— customizing	30
— offline	27
PUK codes	108

<b>Q</b>		status updates	58
Quickoffice	89, 90	support	18, 107
<b>R</b>		switching device on and off	15
radio	69, 70	switching on/off	109
RDS (radio data system)	69, 70	synchronization	48, 104, 105
rebooting	109	<b>T</b>	
recording		tasks	87
— calls	40	text input	23, 24, 25, 26
— sounds	69	text messages	48
— videos	61	themes	31
remote drives	99	time and date	85
remote lock	106	tones	
remote locking	107	— customizing	30
restoring settings	109	touch screen	18, 23, 24
restricting calls	41	transferring content	16, 17, 66, 68, 97, 106
ringing tones	29	troubleshooting	56, 110
ringtones	30, 40, 46	turning device on/off	15
<b>S</b>		turning on/off	109
searching	27	<b>U</b>	
— contacts	35	updates	
— radio stations	69	— applications	100, 101
security code	106, 108	— device software	100, 101
sensor settings	40	USB charging	14
settings		USB connection	97
— access points	92	USB connections	98
— language	51	user guide	18
— restoring	109	<b>V</b>	
sharing, online	58	videos	65
shortcuts	21, 33, 34	— copying	16, 66, 97, 106
silent profile	30	— editing	64
SIM card		— location information	60
— inserting	10	— playing	65
— removing	10	— recording	61
slideshow	64	— sending	62, 95
SMS (short message service)	48	— sharing	43, 44, 58
social networks	57, 58, 59	— watching	62, 63
software	103	virtual keyboard	23
software updates	100, 101	virtual keypad	24
speakerphone	9		

voice calls	
<i>See calls</i>	
voice commands	38
volume control	9
VPN (virtual private network)	99

### W

wallpaper	32
web browser	55, 56, 110
— bookmarks	56
— browsing pages	55
— cache memory	55
— intranet	92
web connection	92
web feeds	56
Wi-Fi	93, 94
Wi-Fi (wireless local area network)	93
widgets	33, 34, 55
world clock	85, 86

### Z

zip files	91
-----------	----