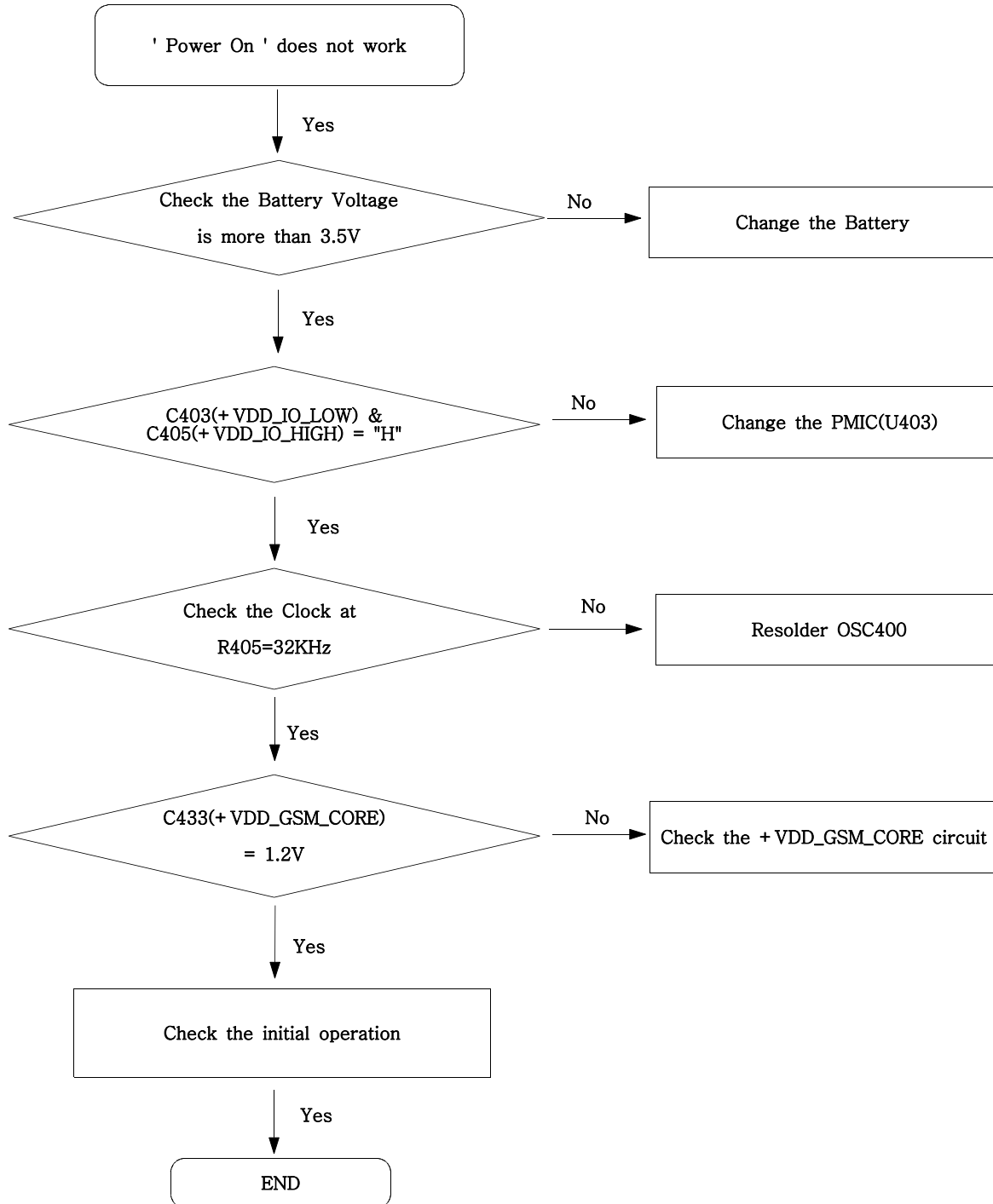
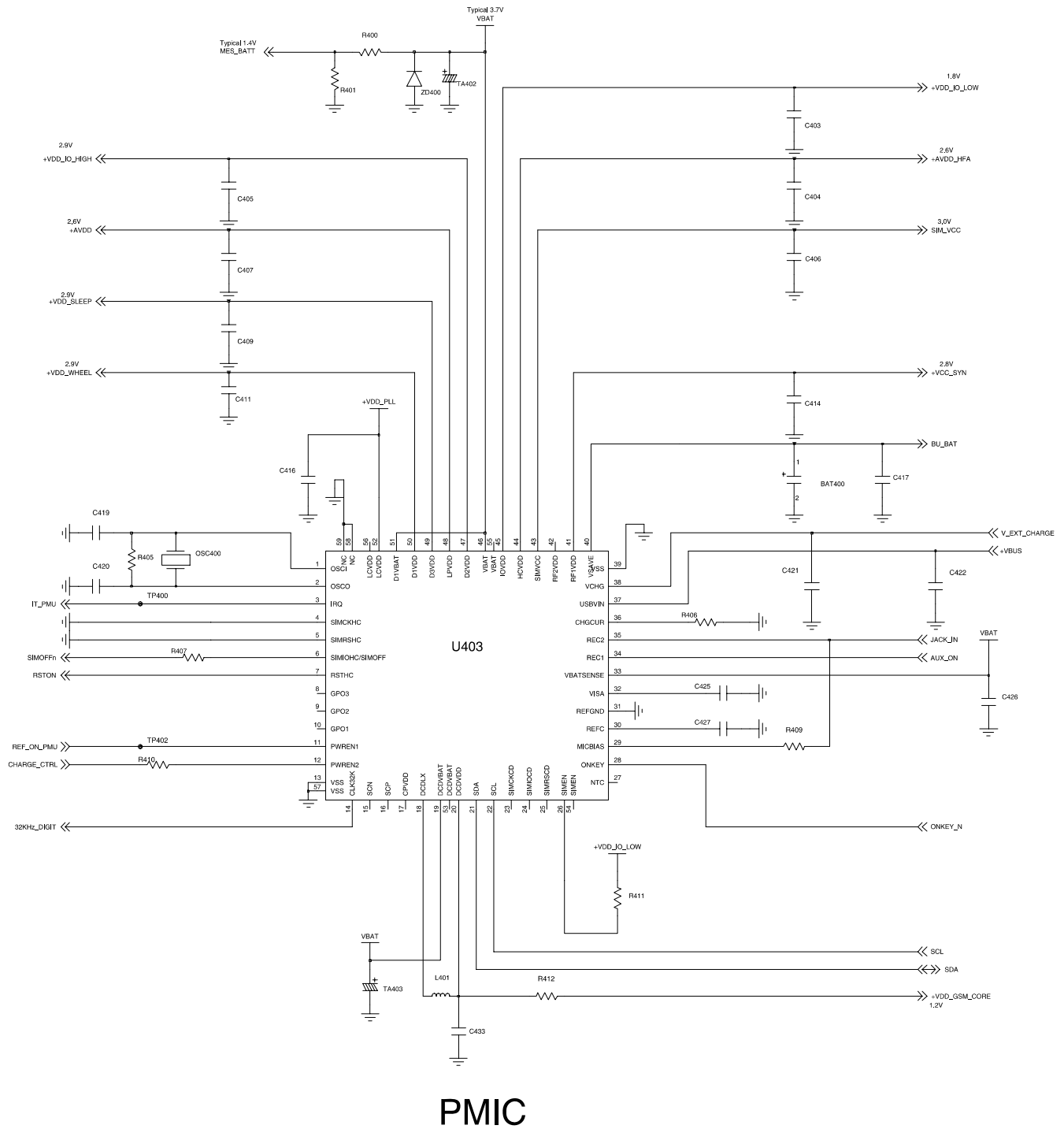
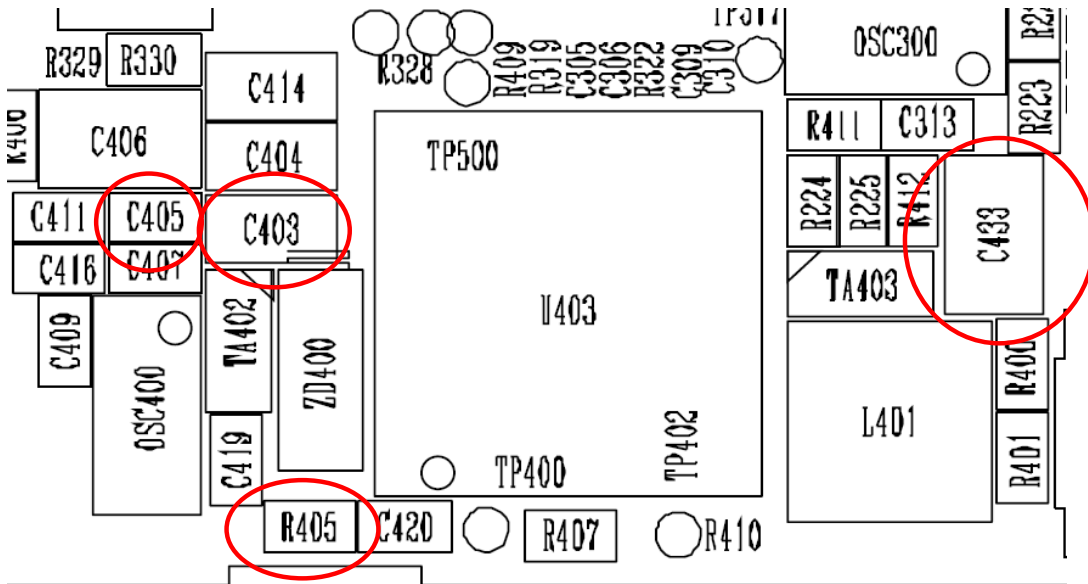

9. Flow Chart of Troubleshooting

9-1. Power On

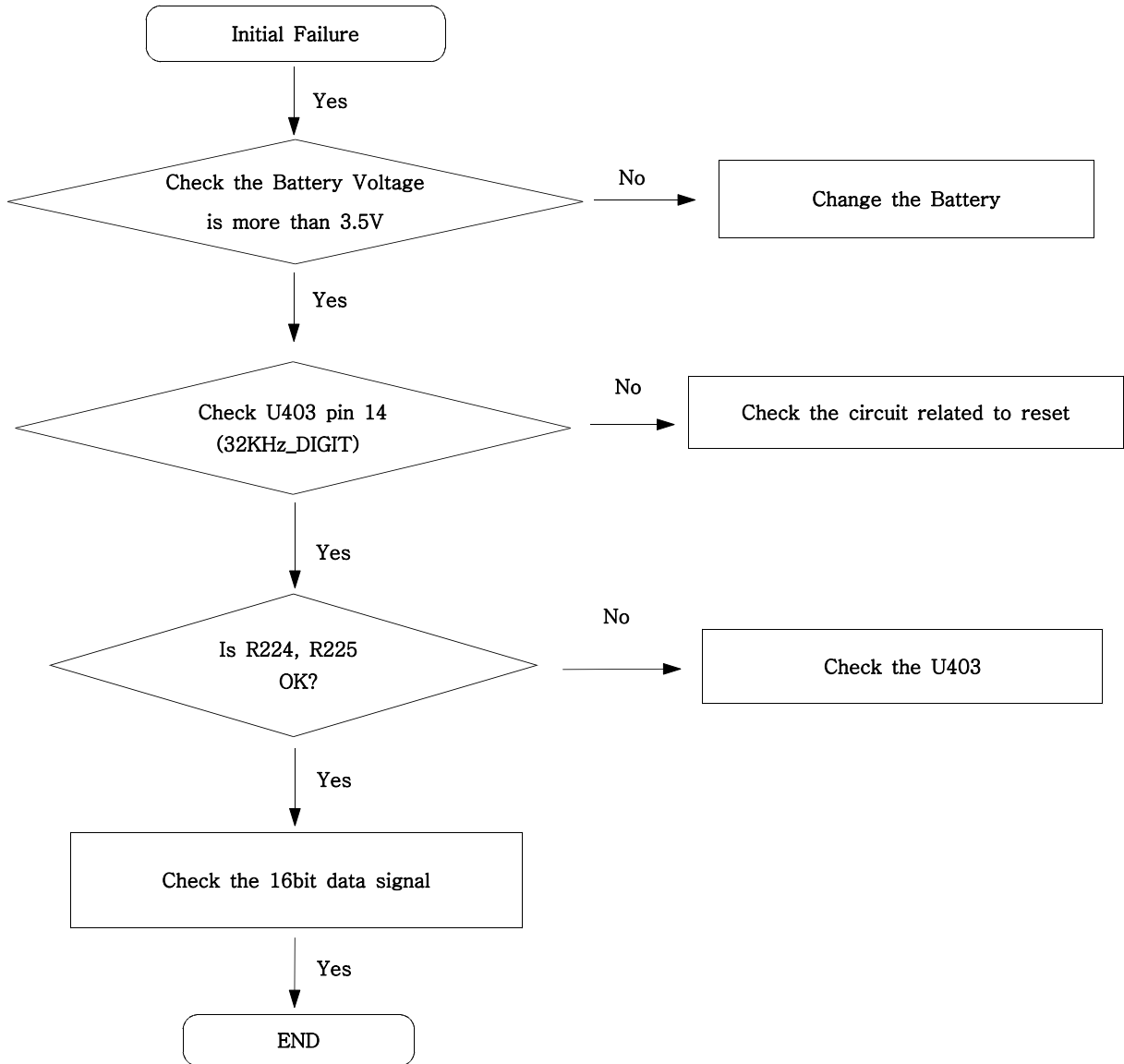


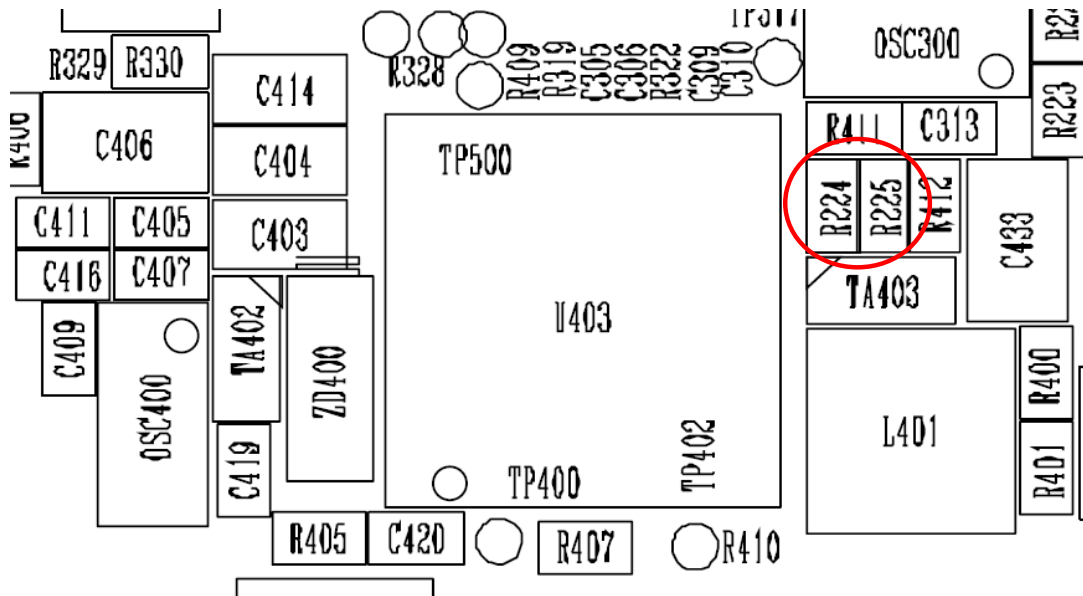
Flow Chart of Troubleshooting



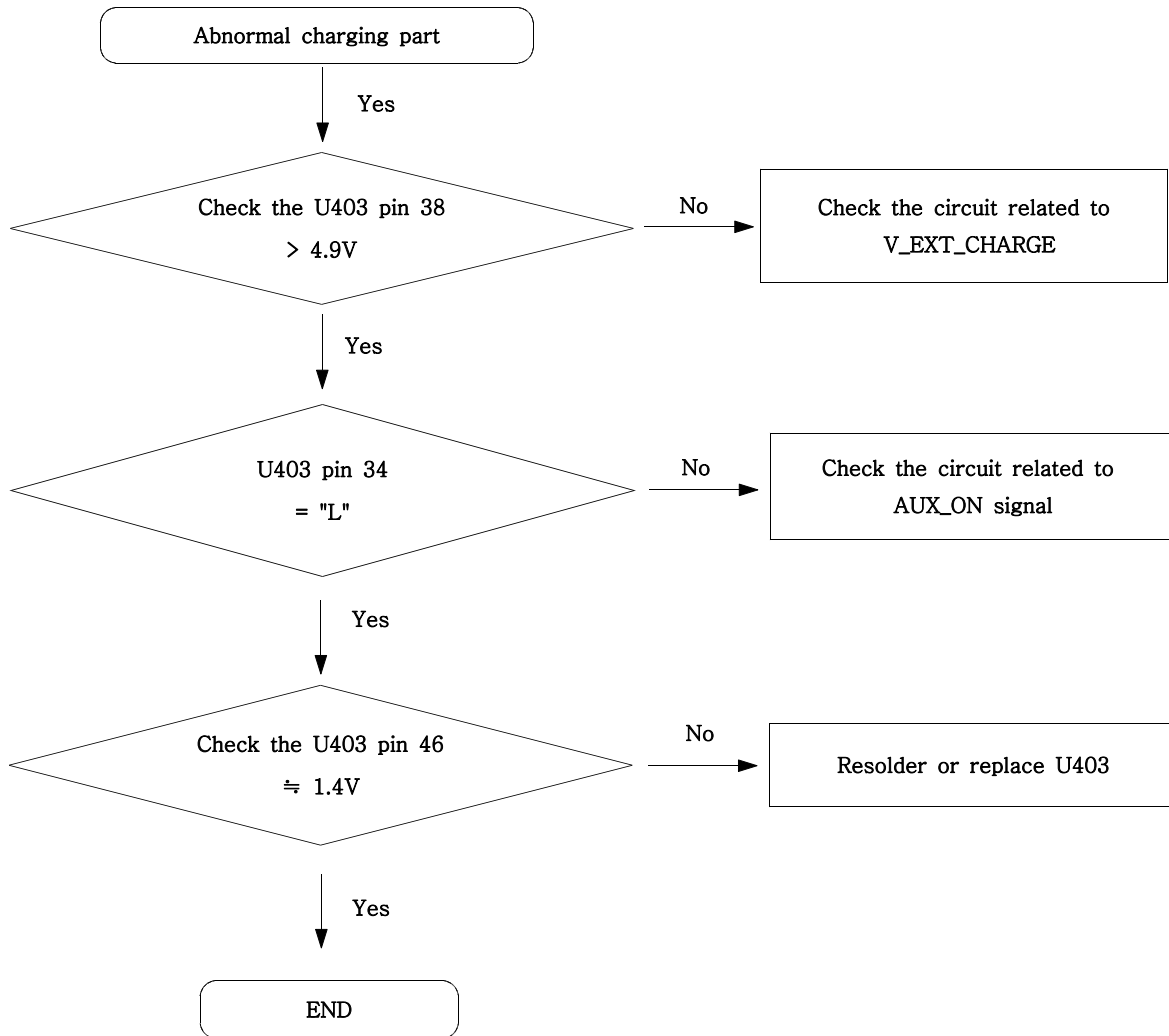


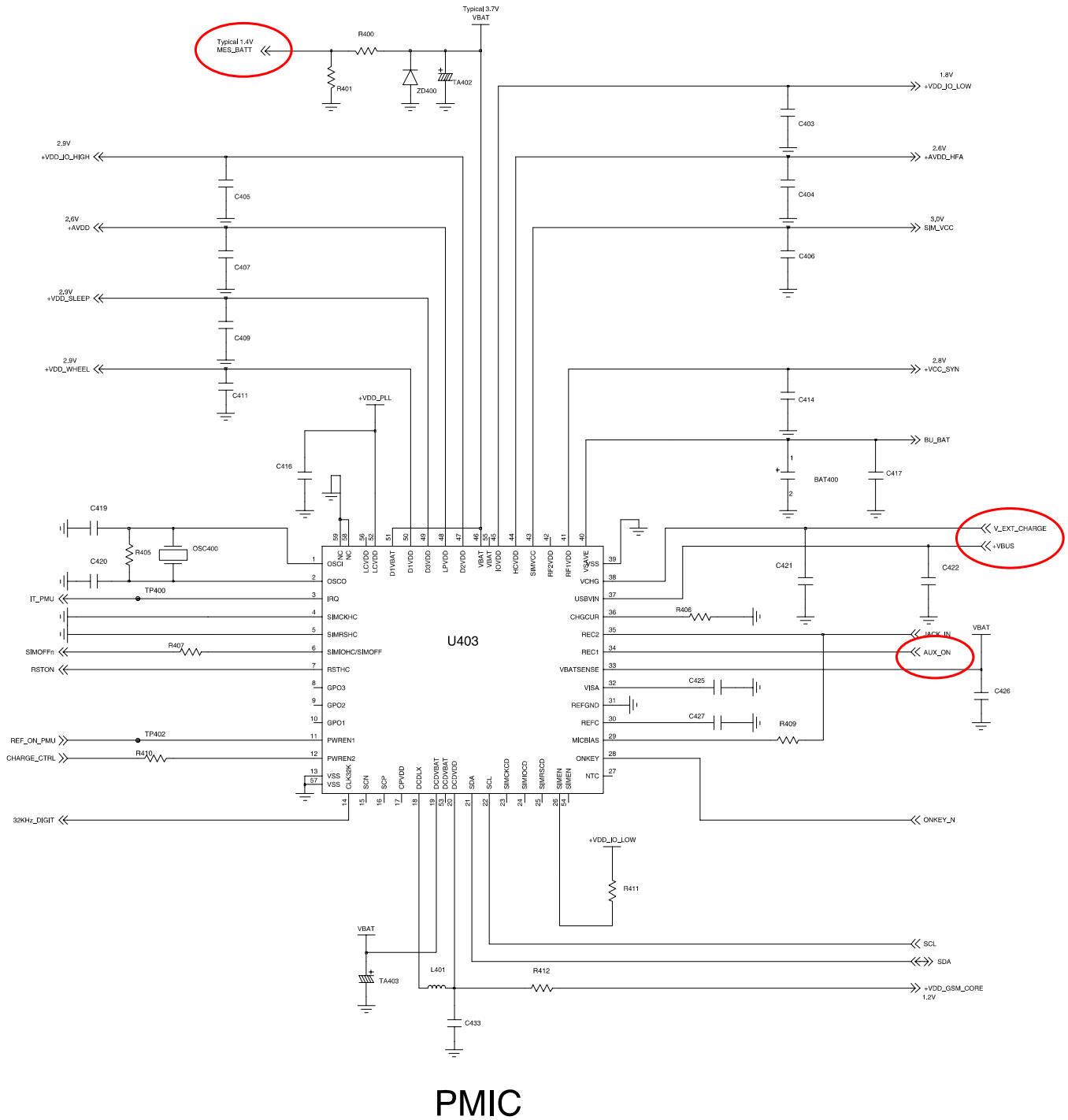
9-2. Initial





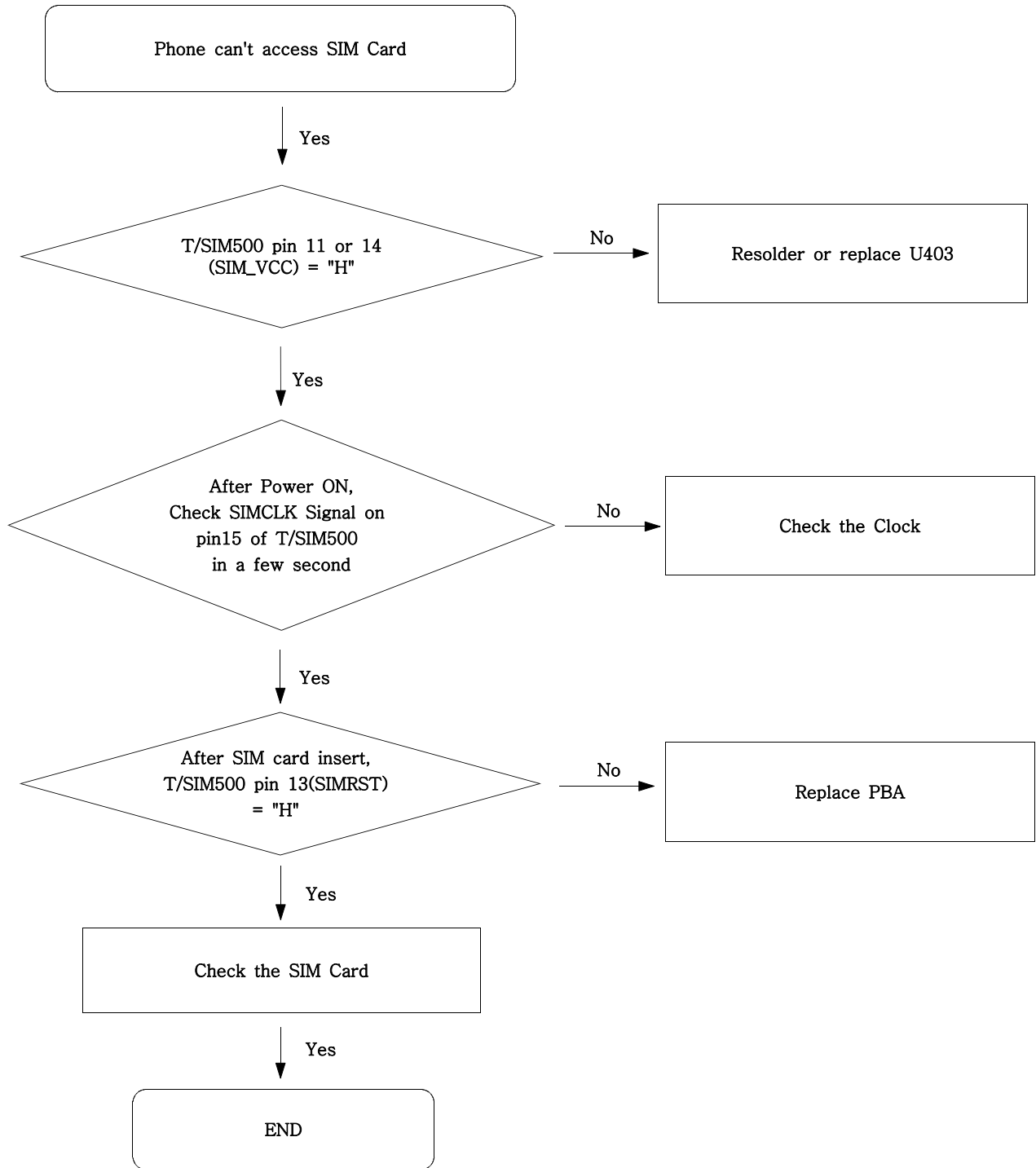
9-3. Charging Part

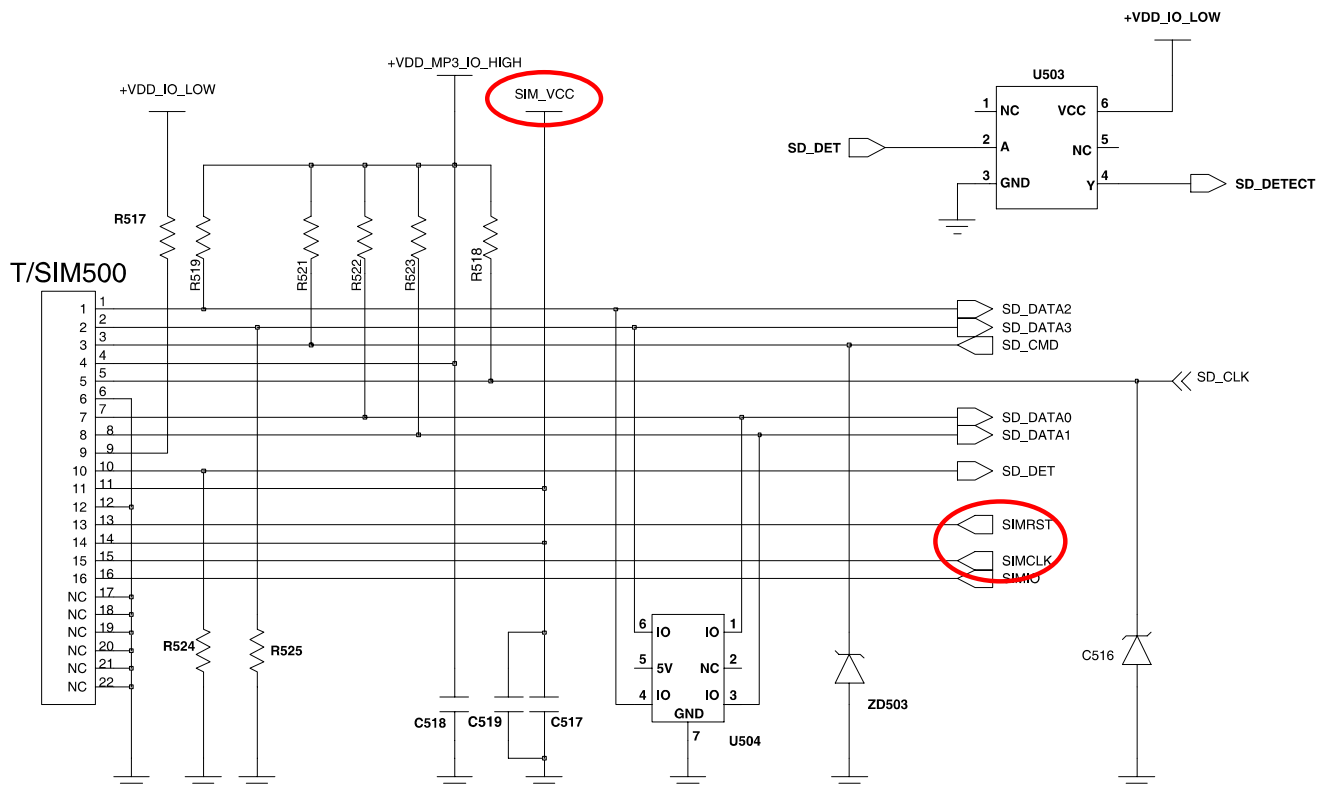




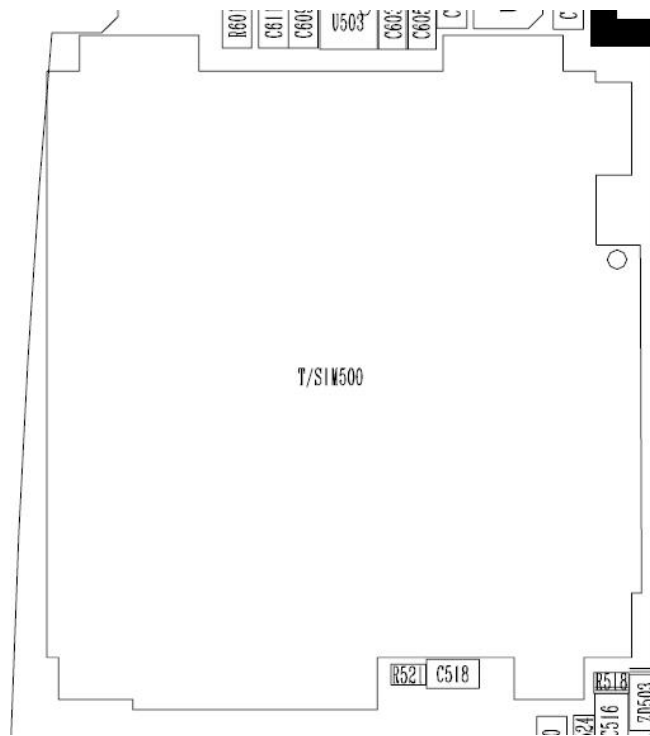
PMIC

9-4. Sim Part

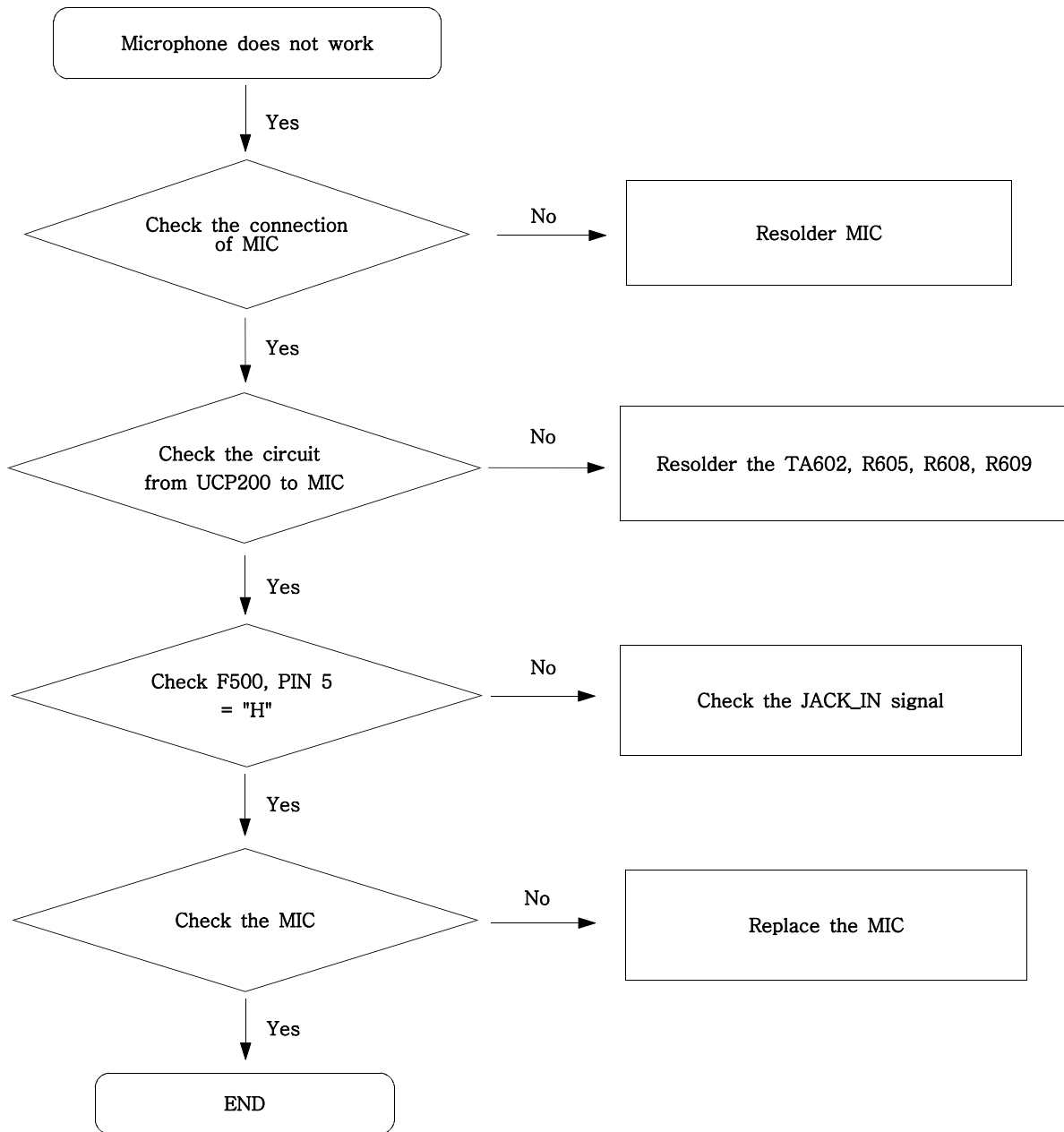


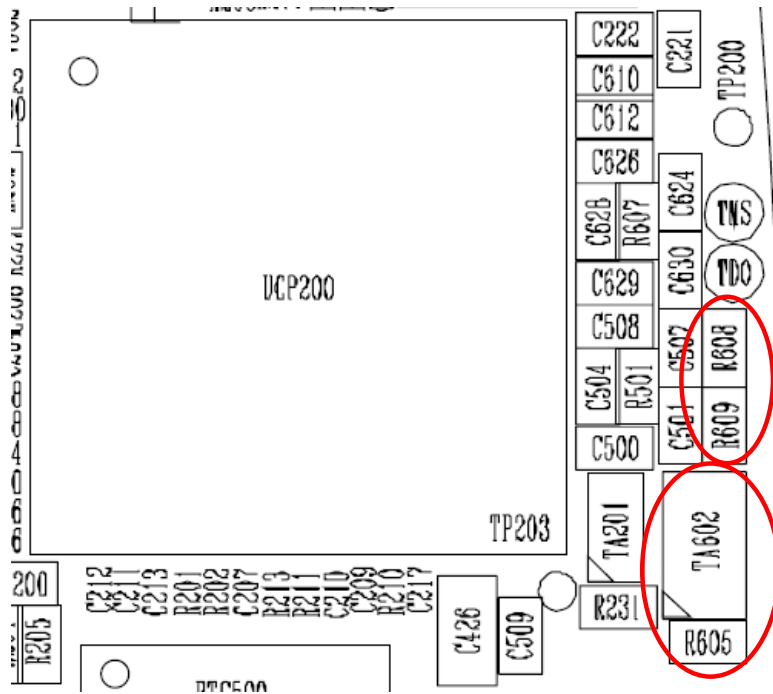
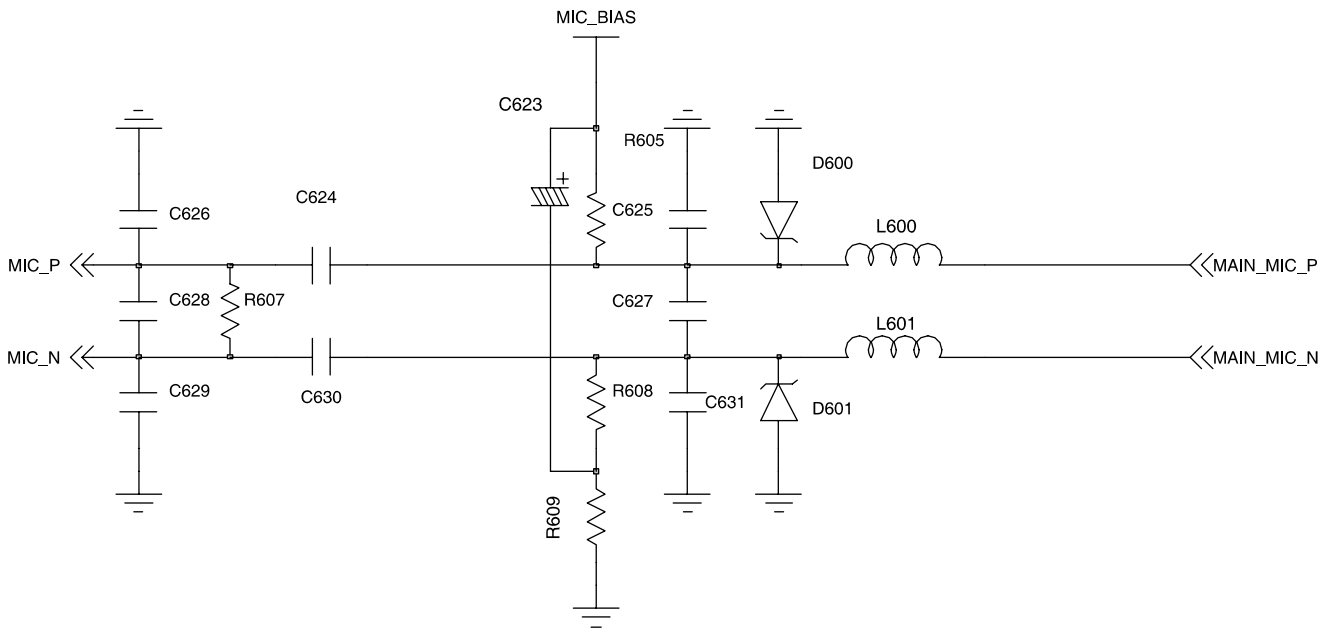


T_FLASH & SIM

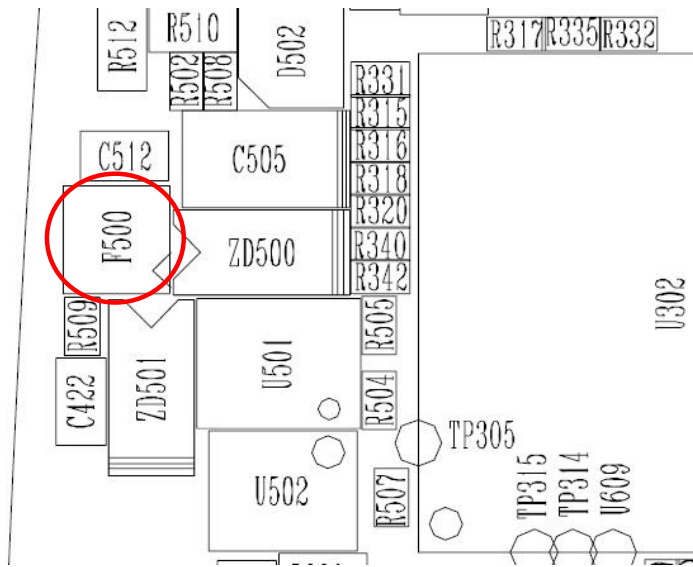
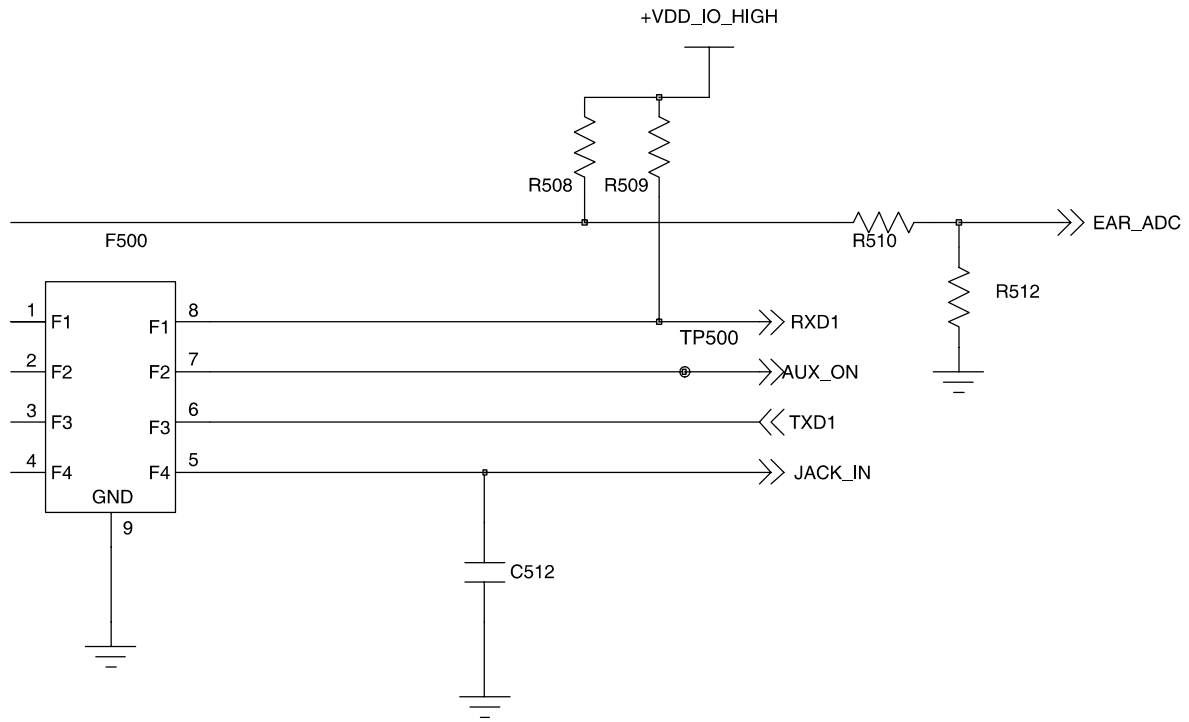


9-5. Microphone Part

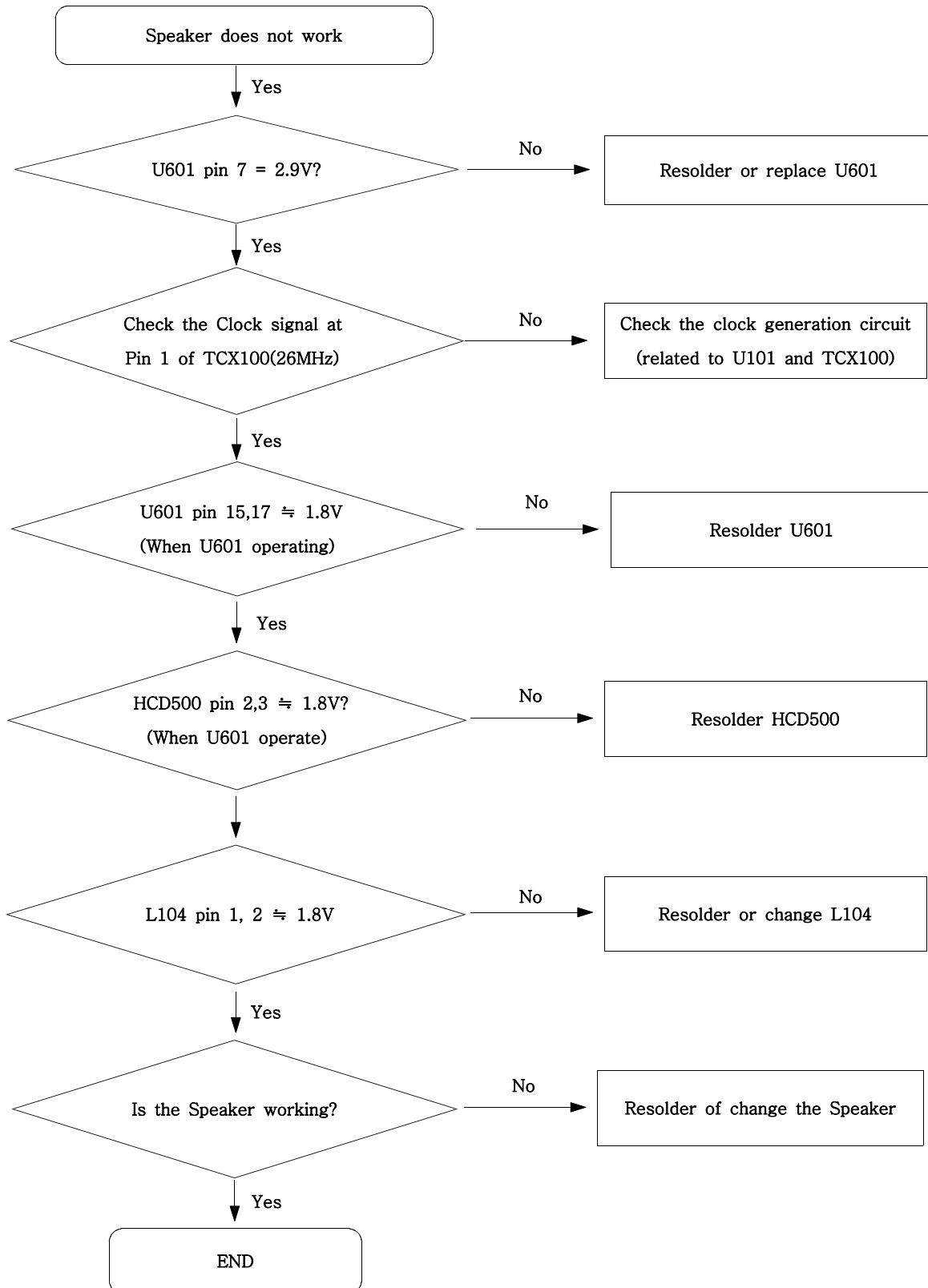


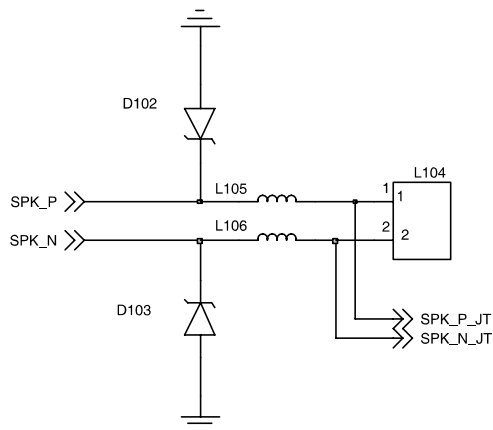
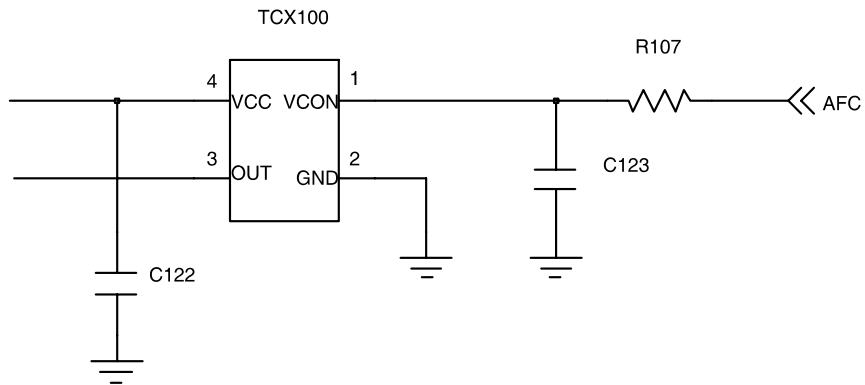
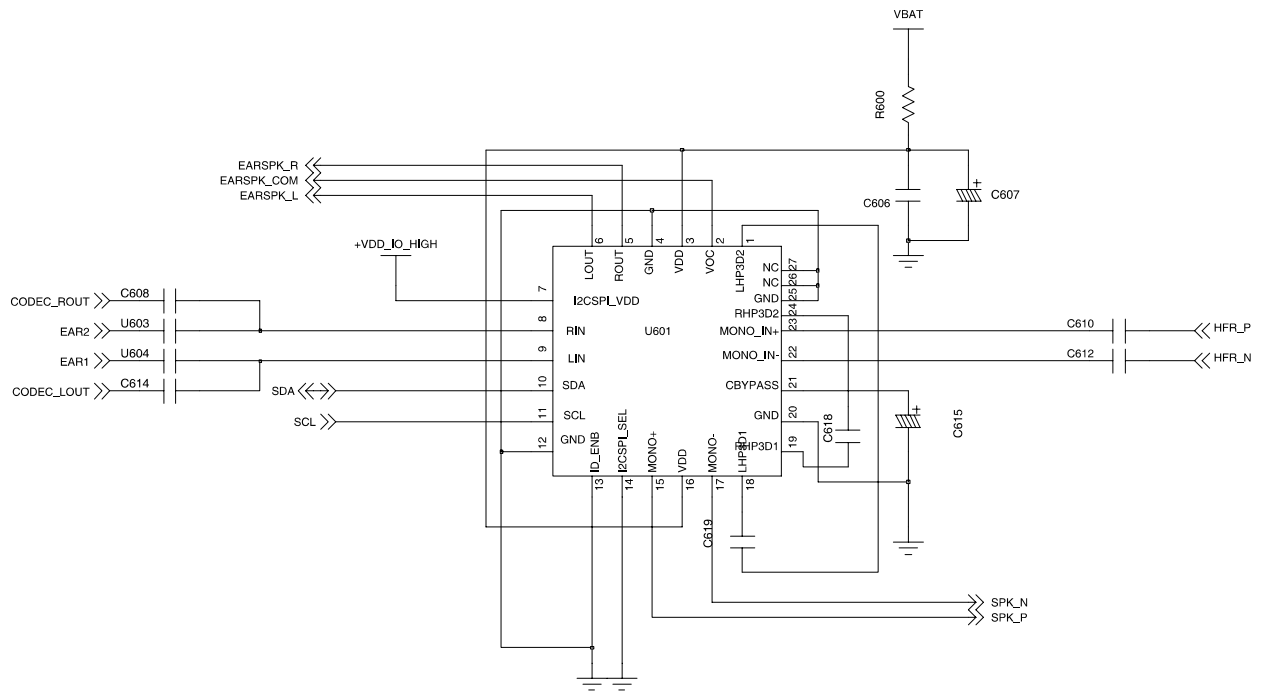


Flow Chart of Troubleshooting



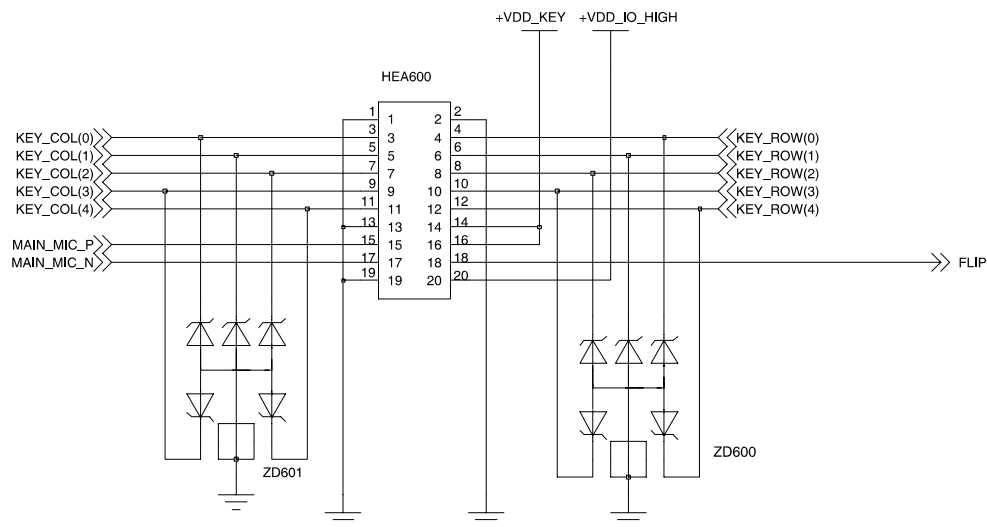
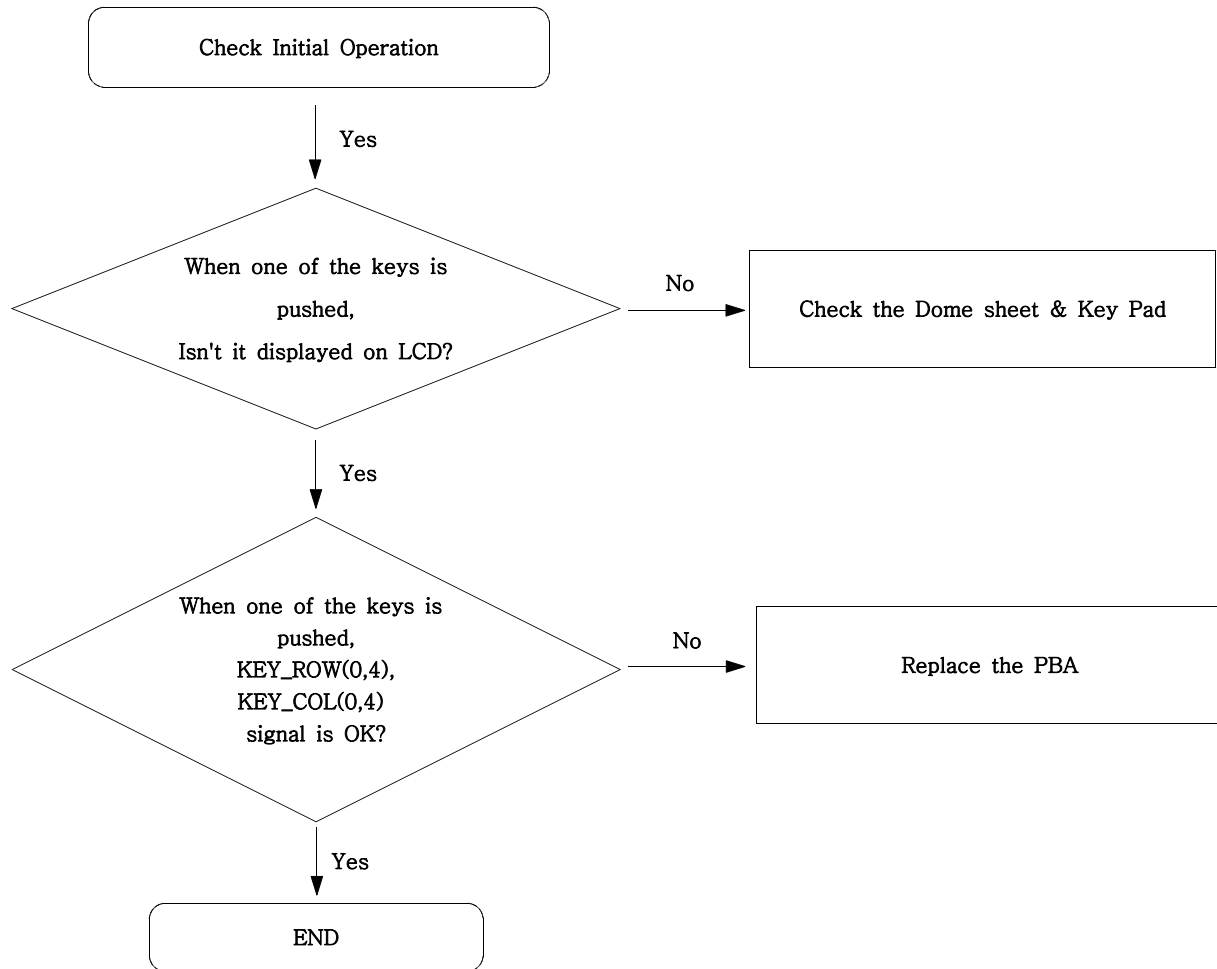
9-6. Speaker Part(Melody)





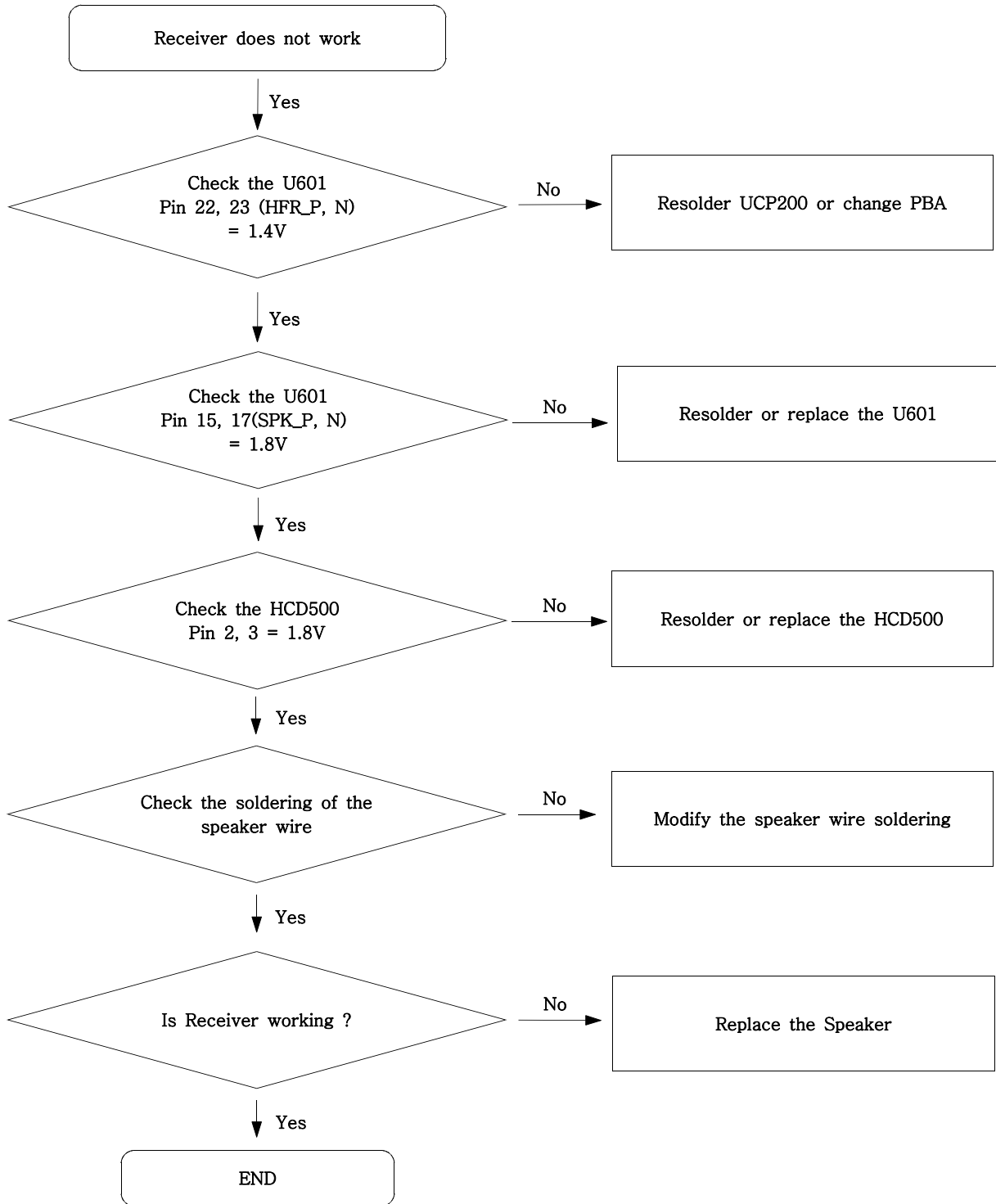
AUDIO

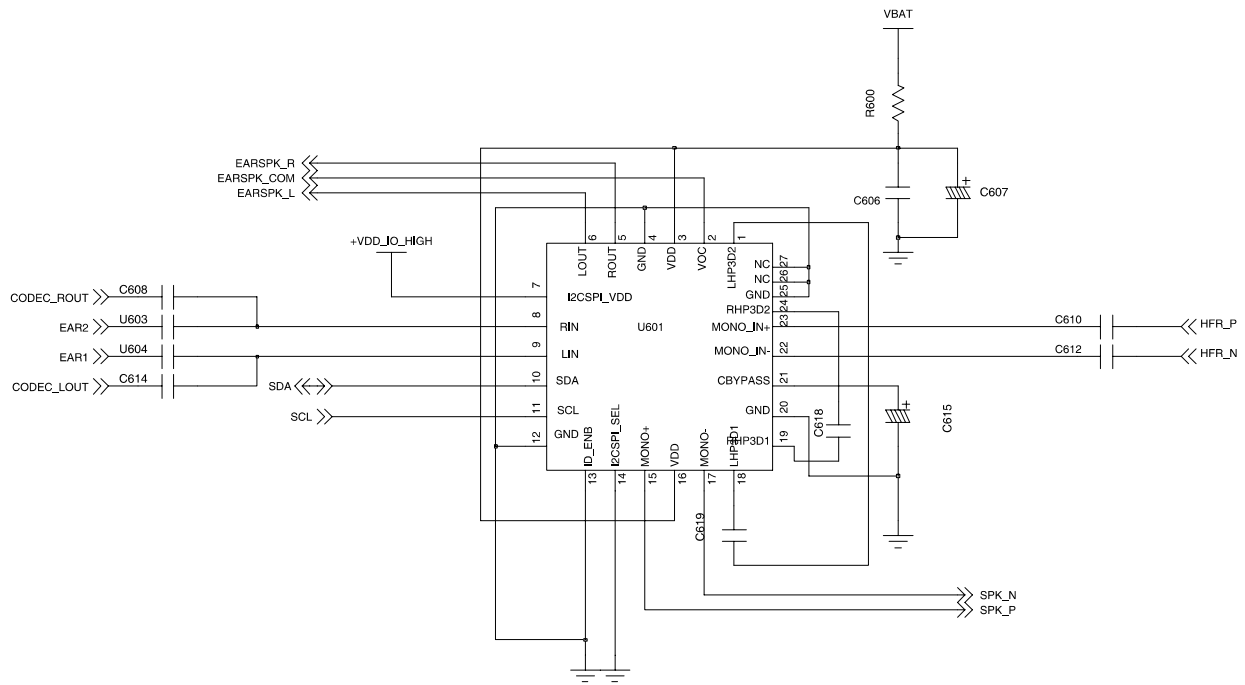
9-7. Key Data Input



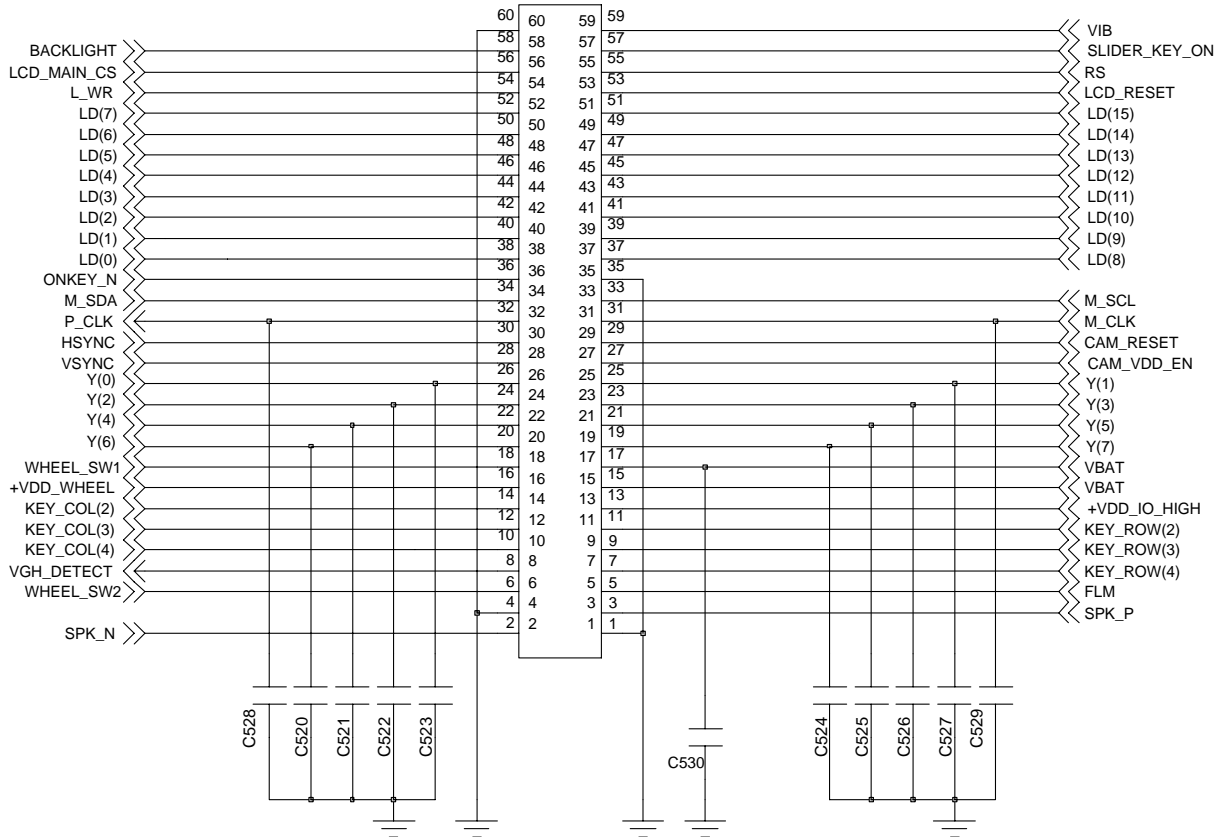
MAIN KEY MAP

9-8. Receiver Part

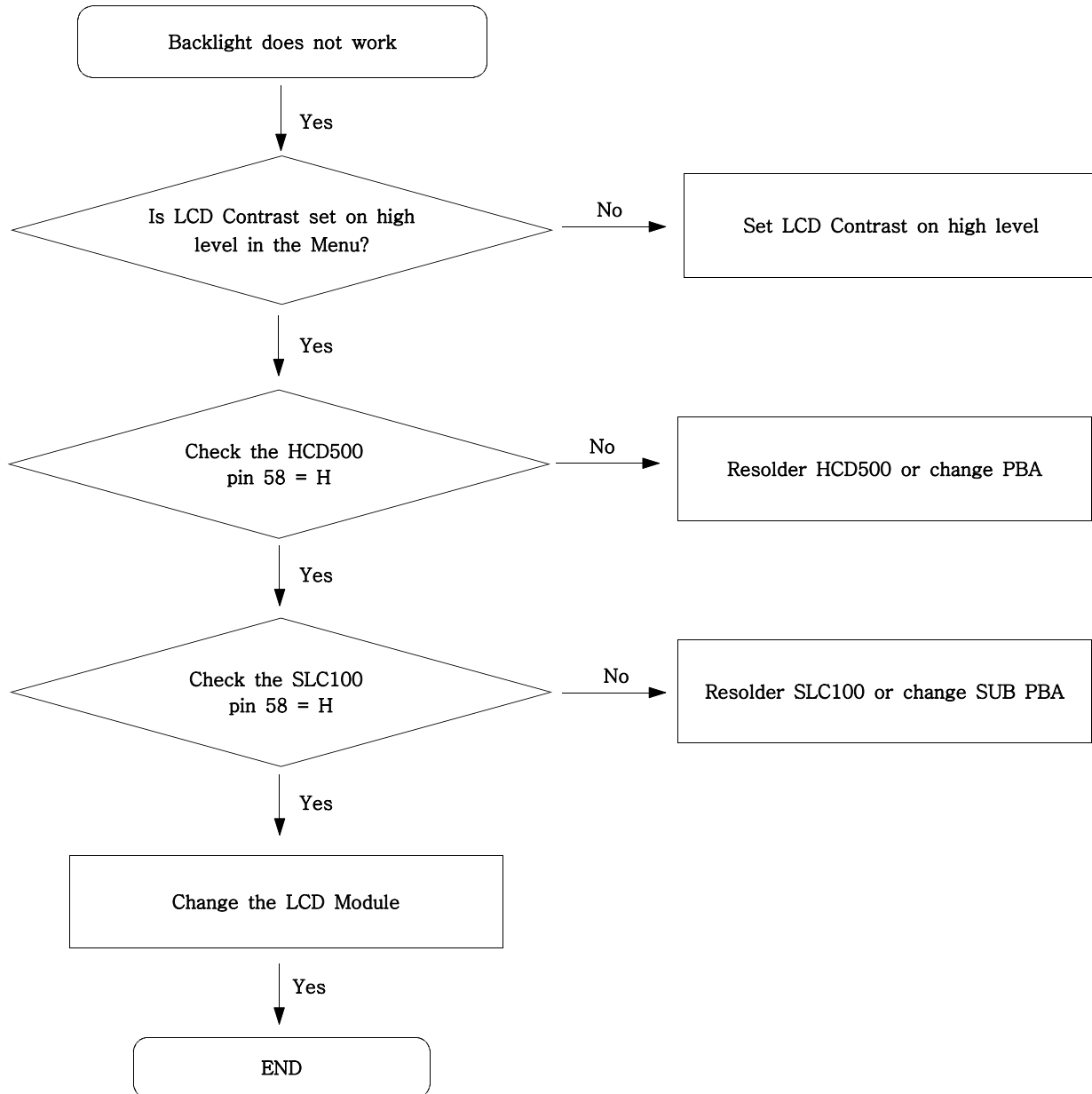


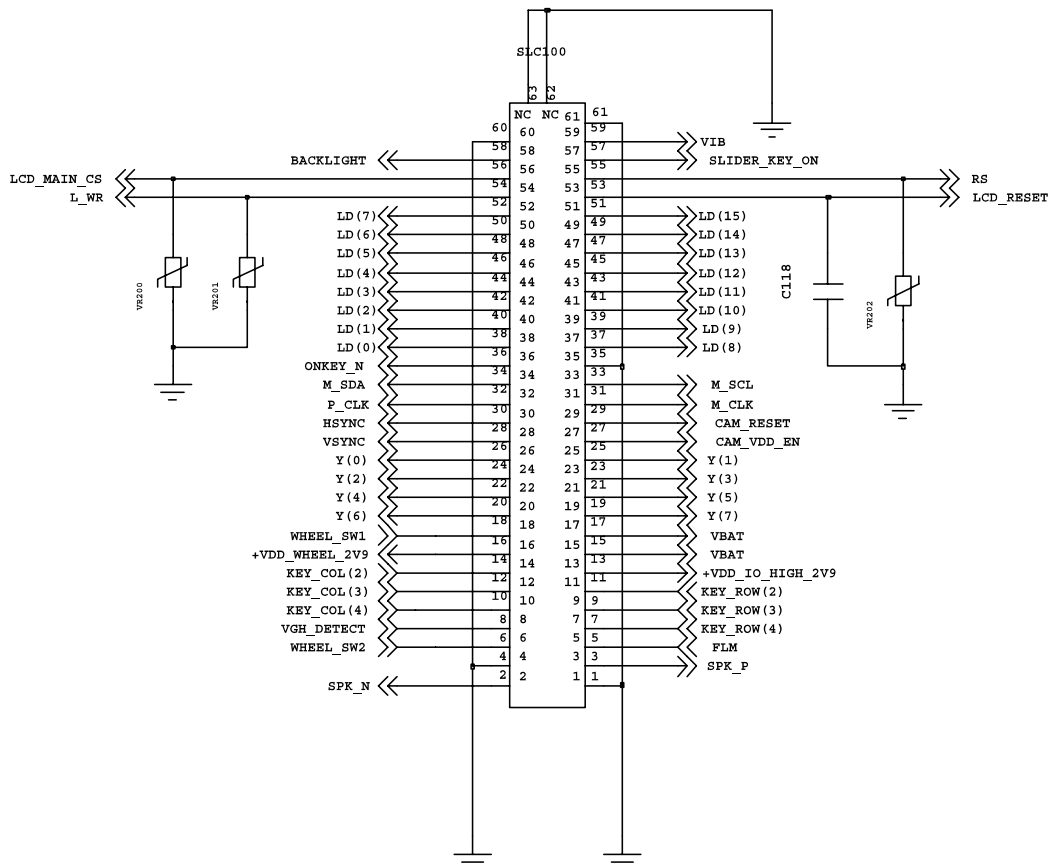
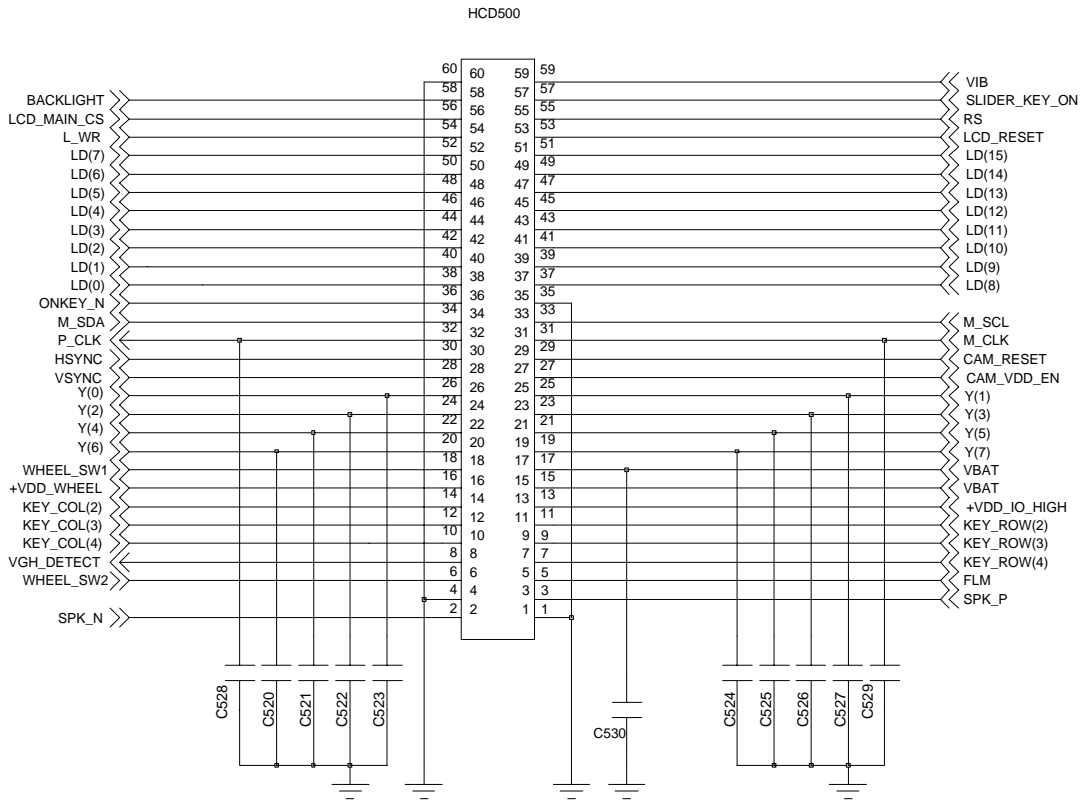


HCD500

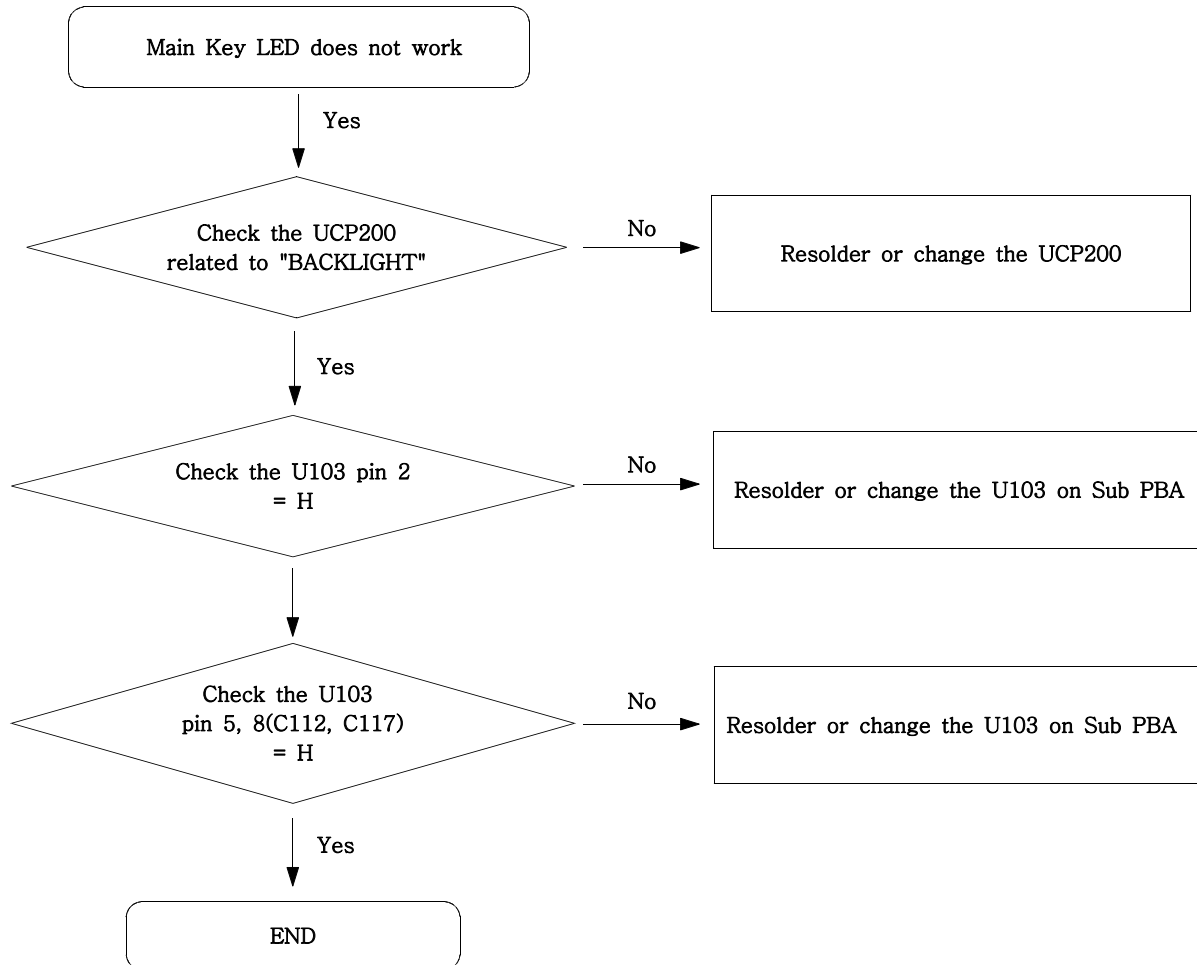


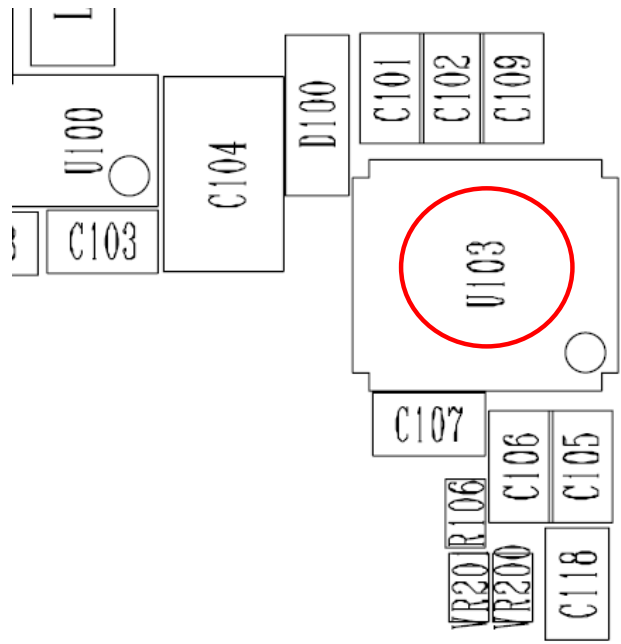
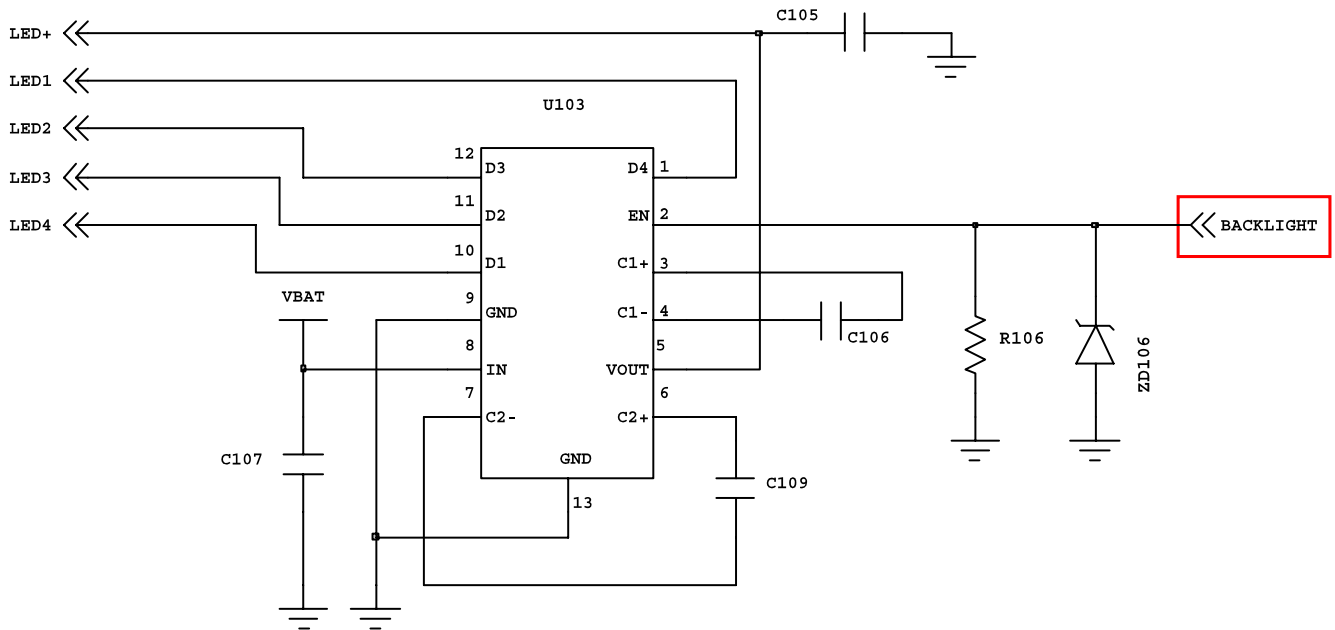
9-9. Back Light (for Color Main LCD)



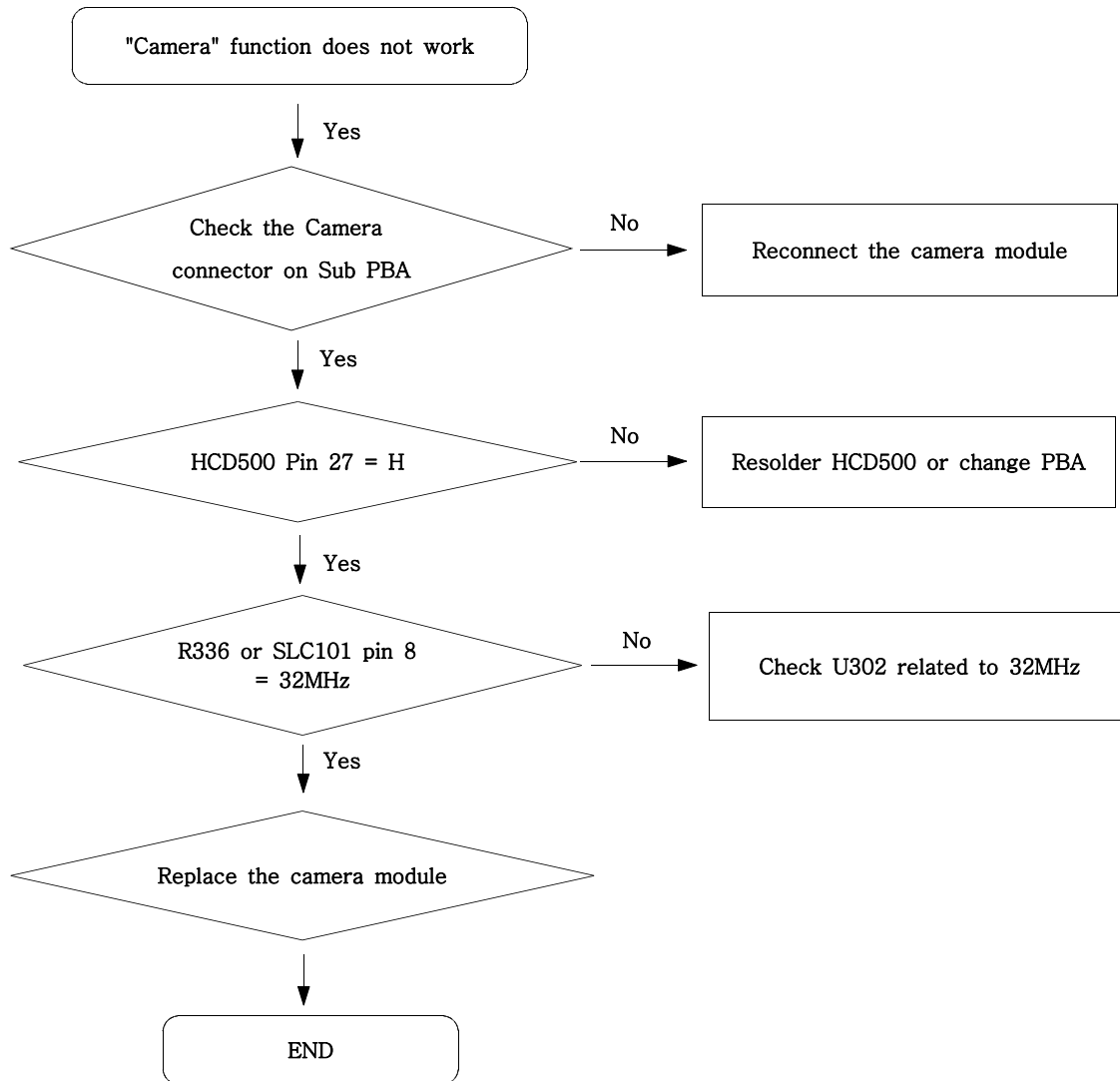


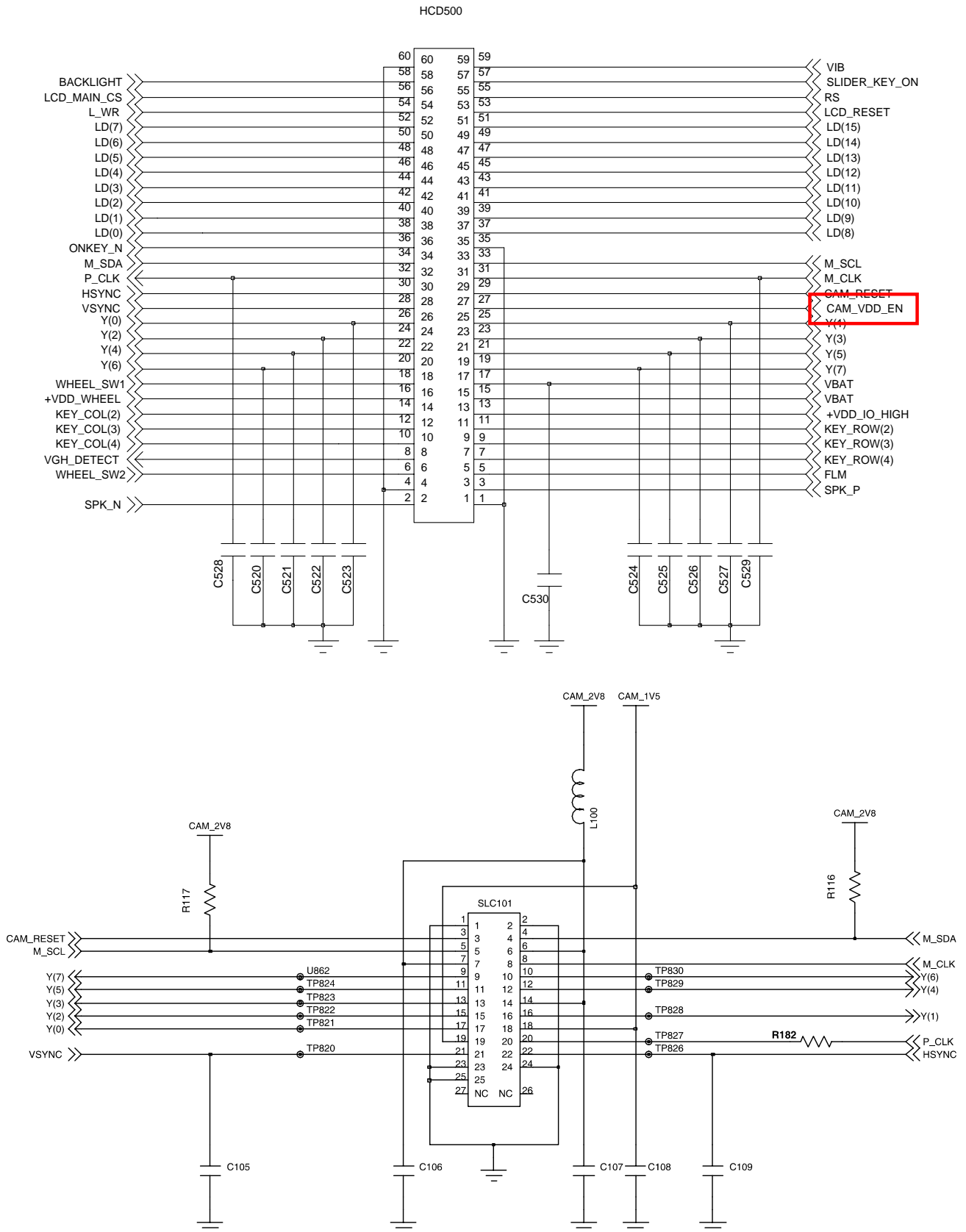
9-10. Key Back Light



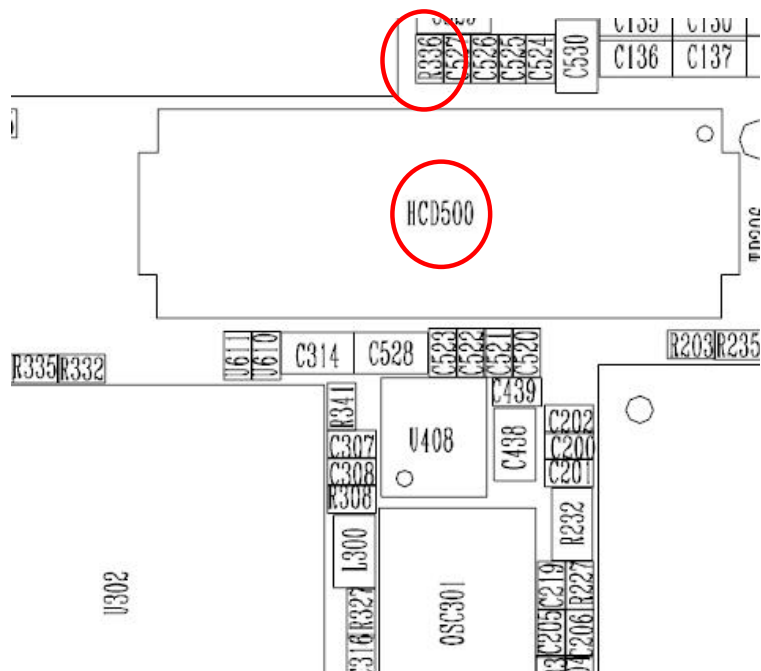
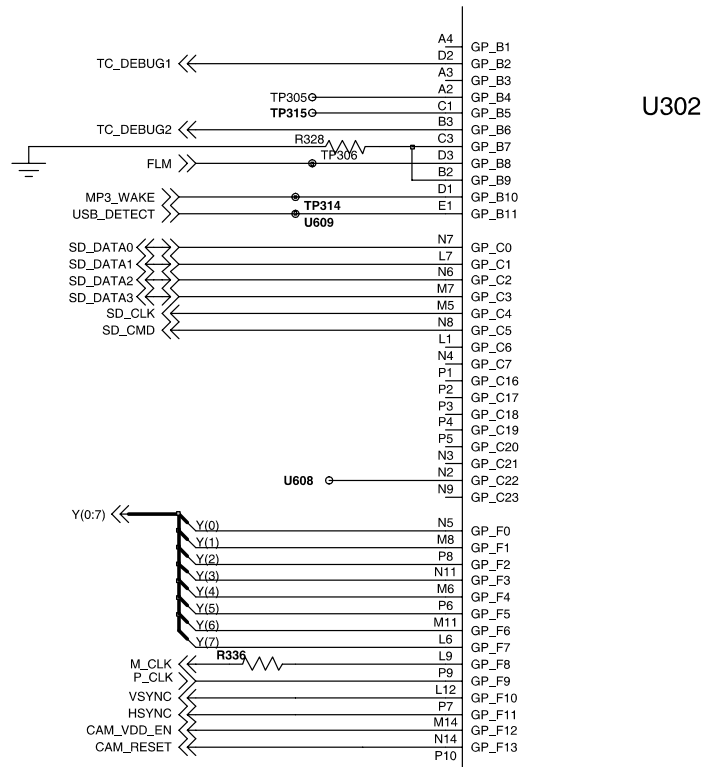


9-11. Camera part

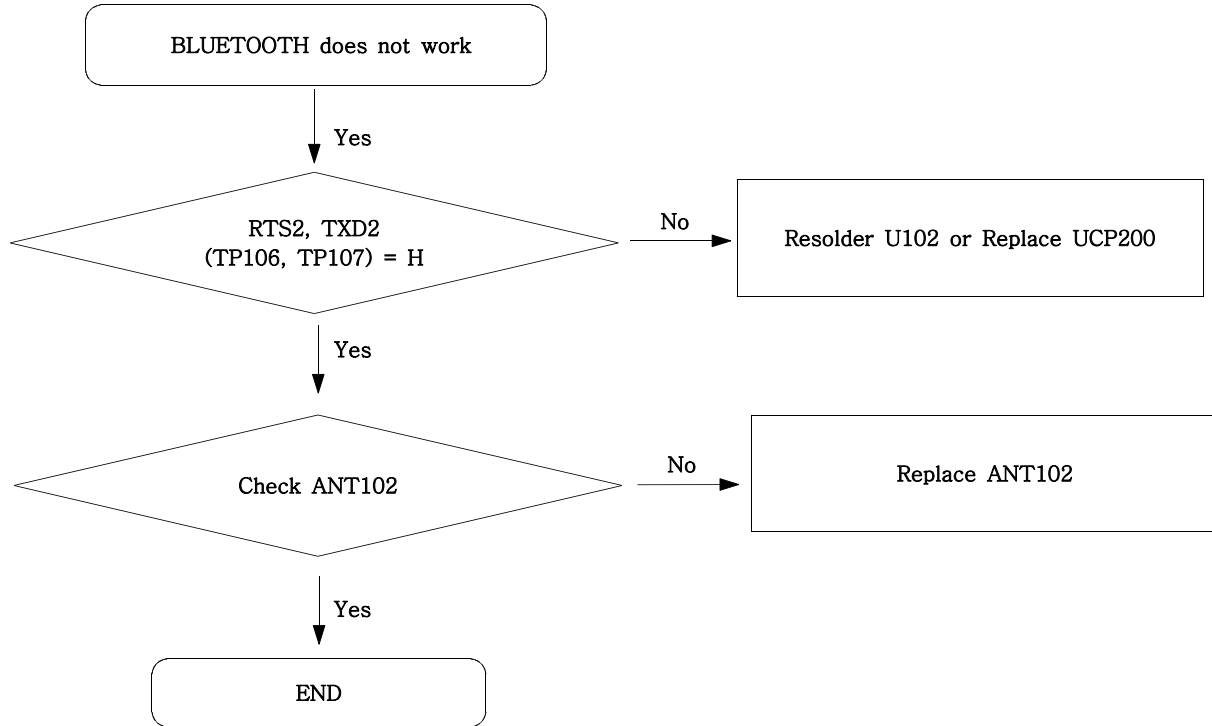




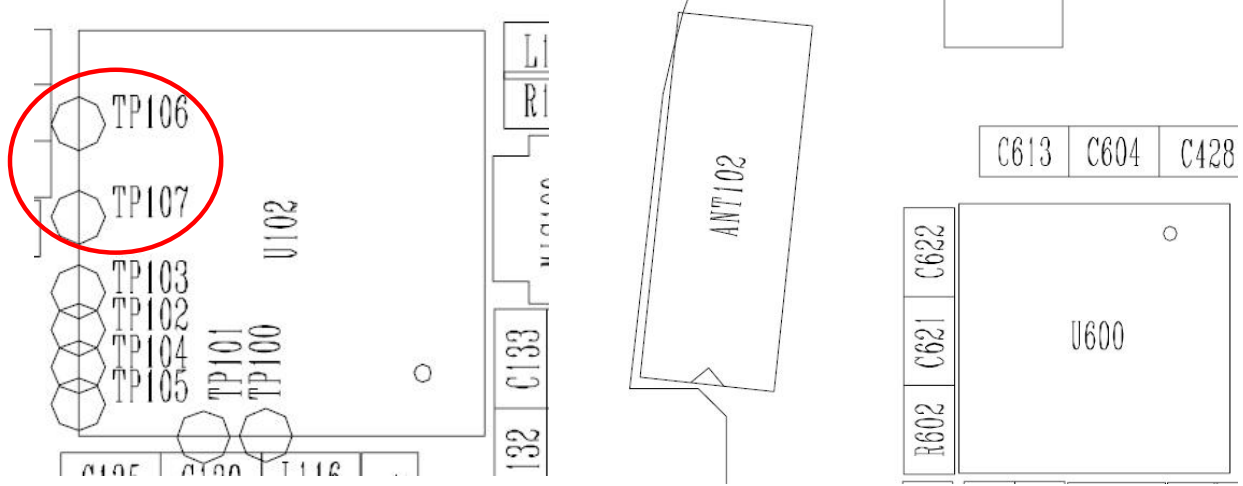
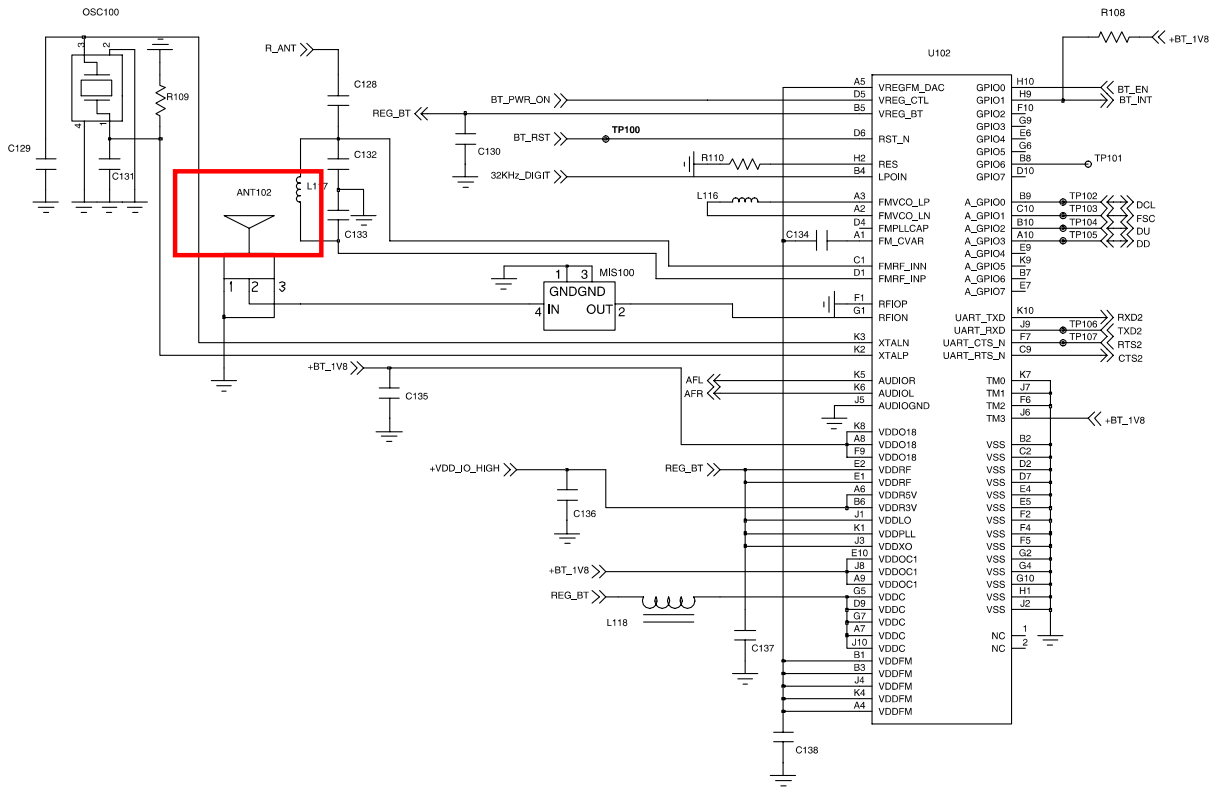
Flow Chart of Troubleshooting



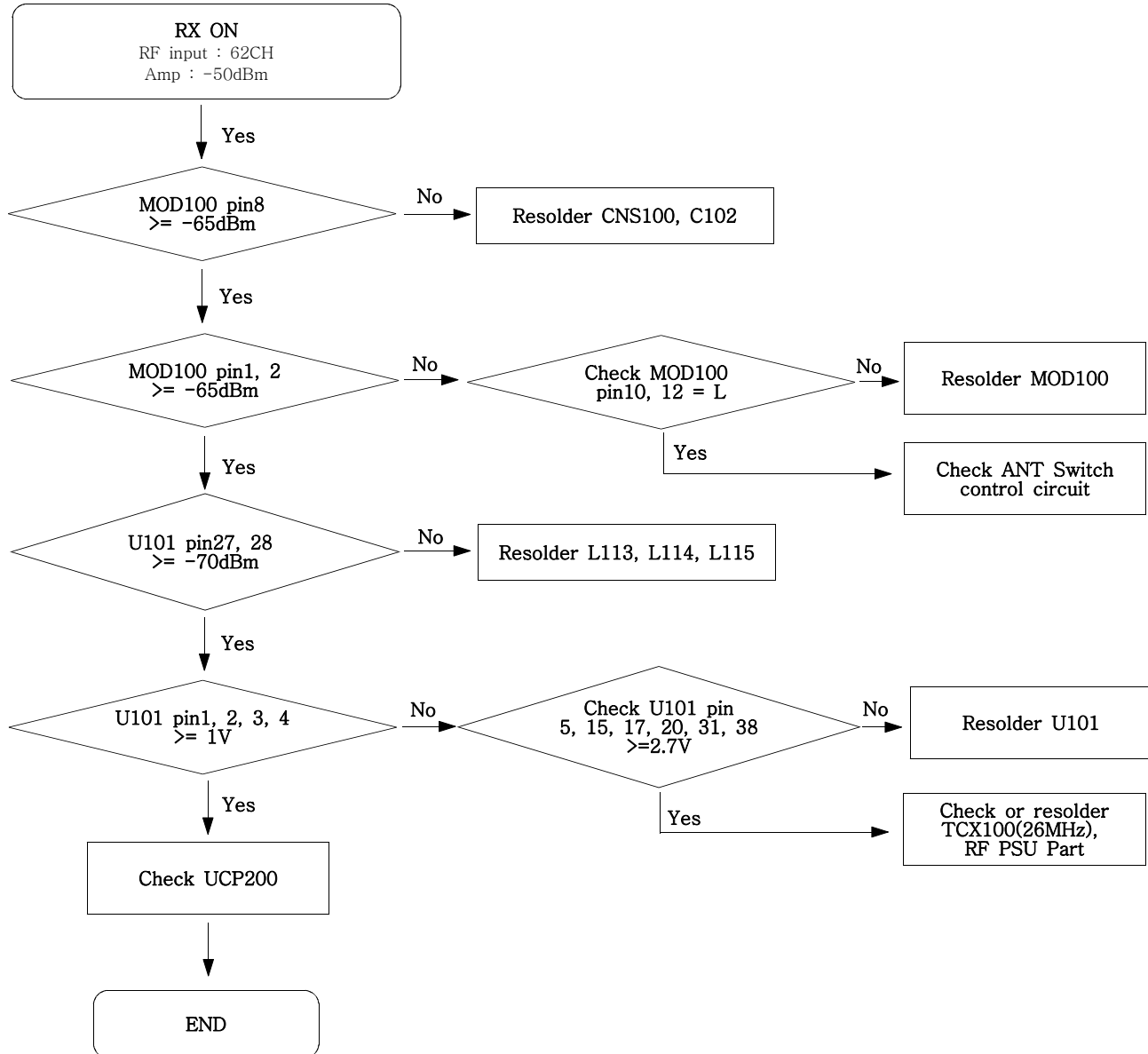
9-12. BLUETOOTH



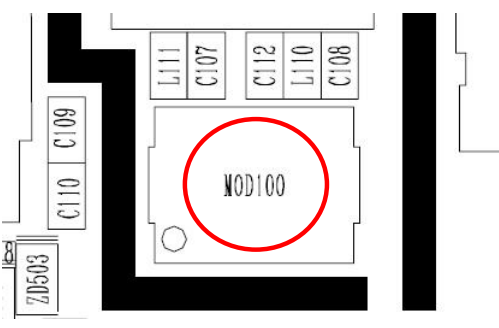
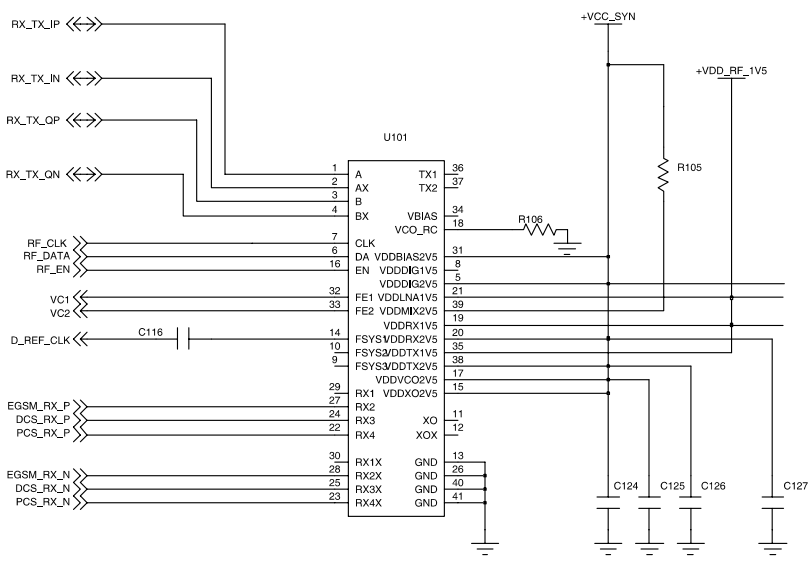
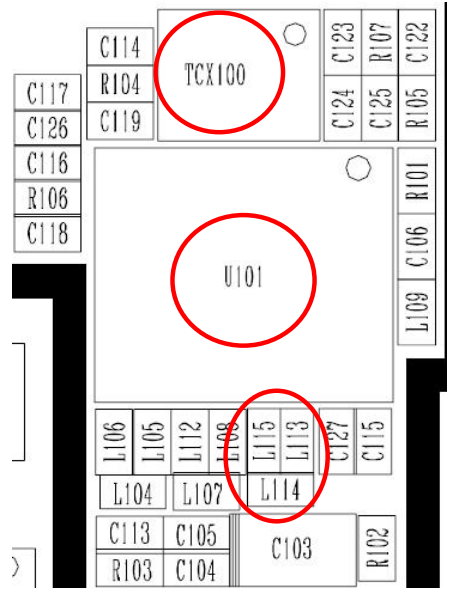
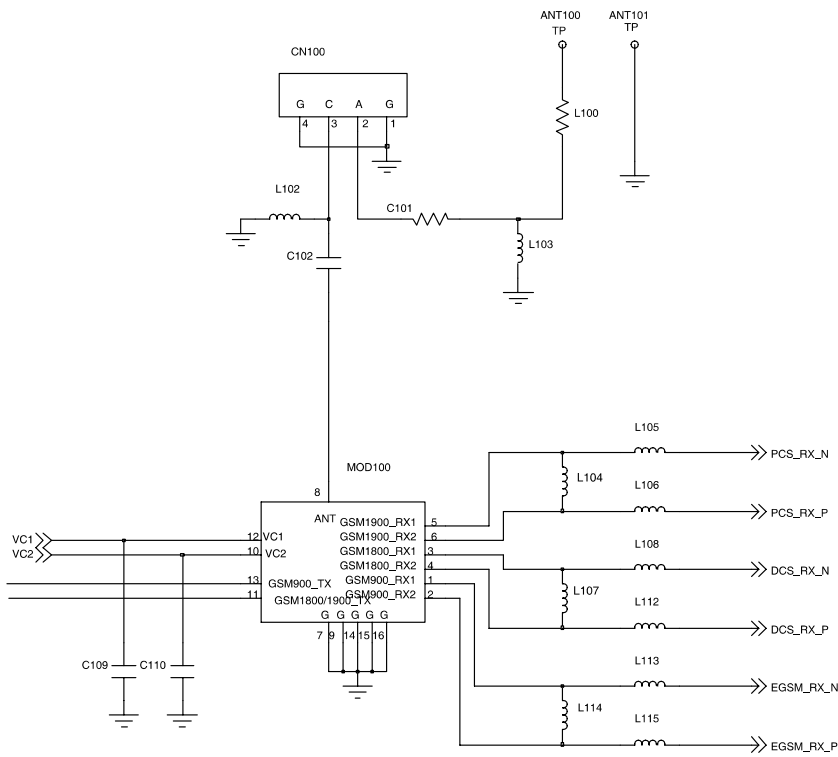
Flow Chart of Troubleshooting



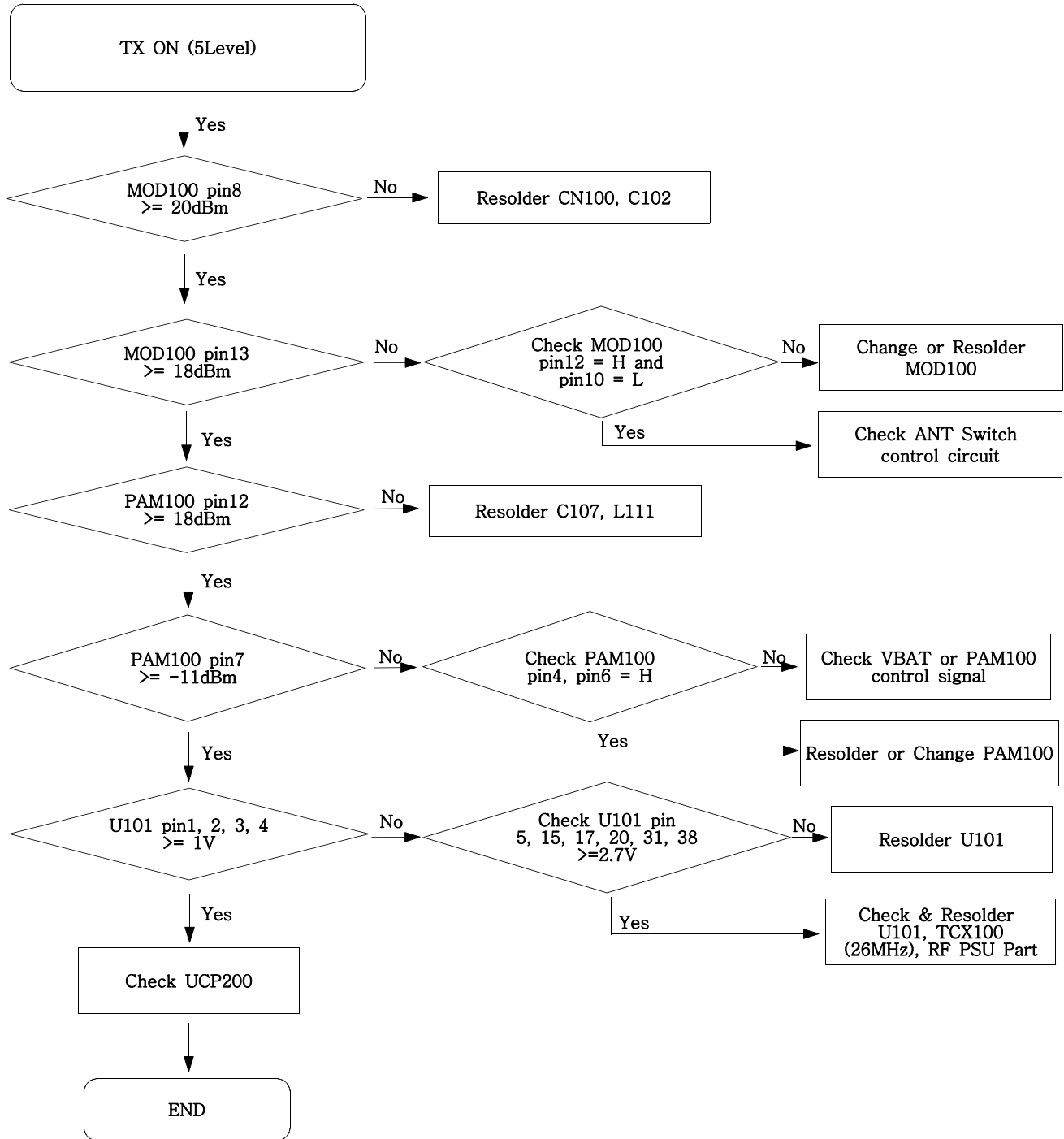
9-13. GSM Receiver



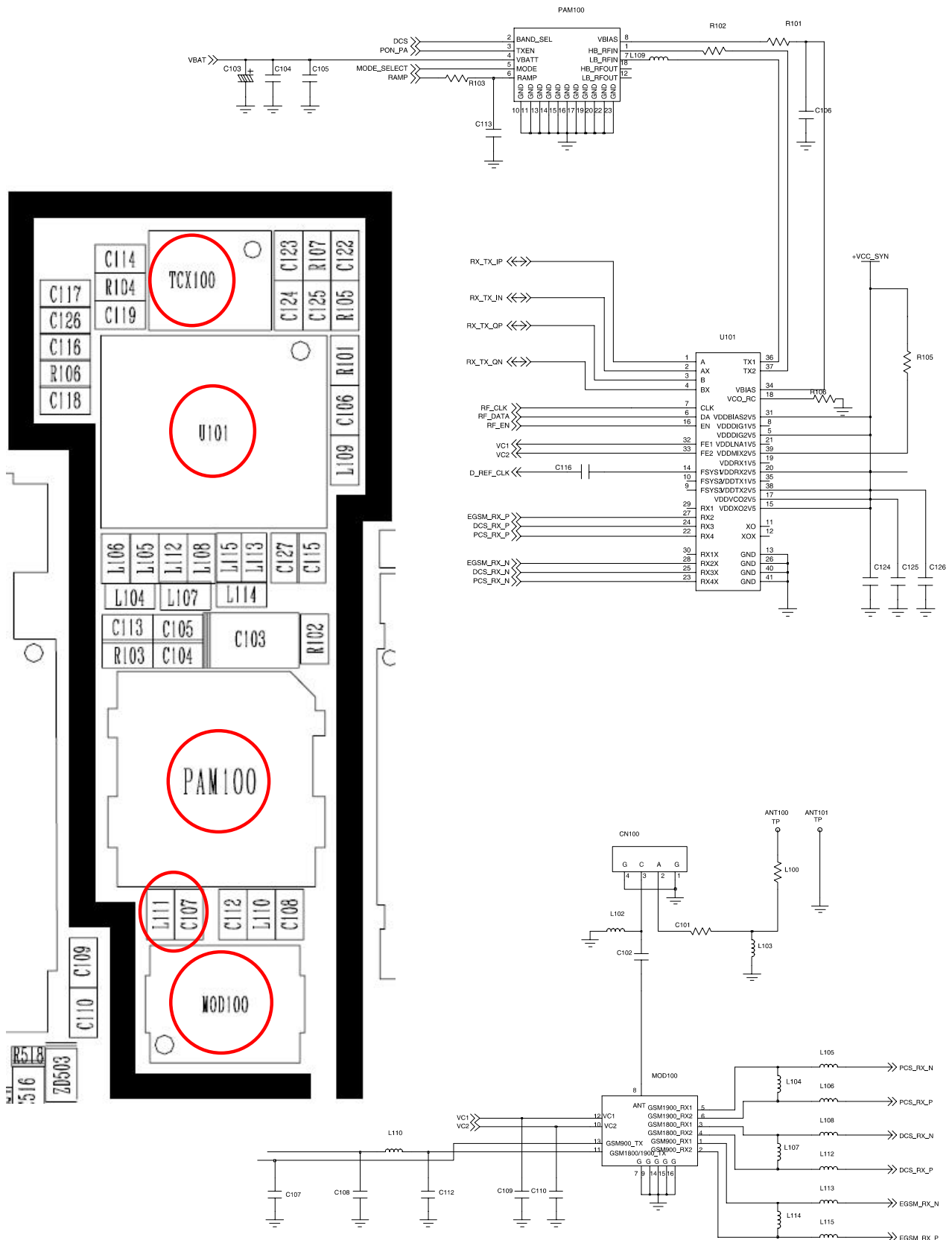
Flow Chart of Troubleshooting



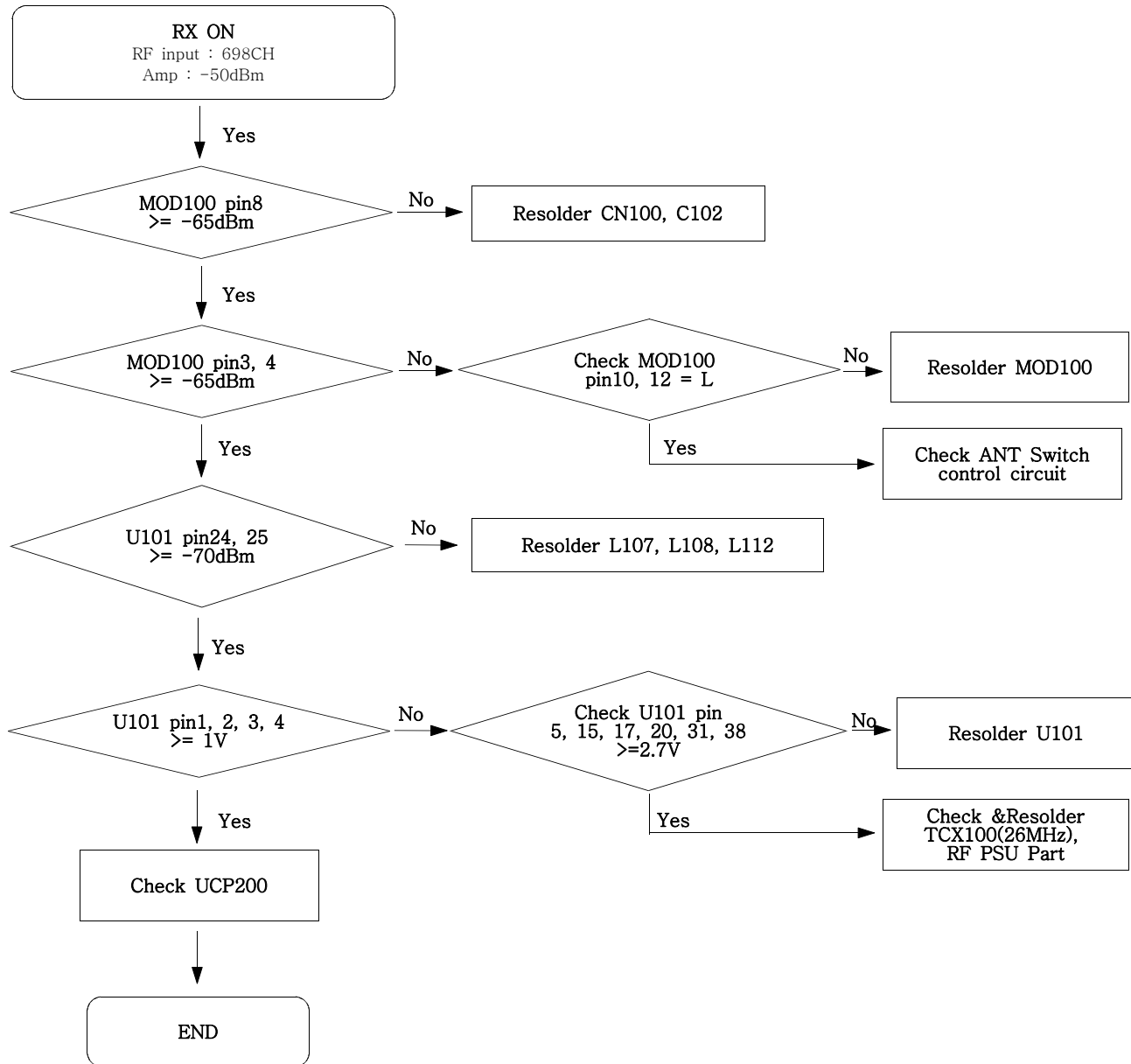
9-14. GSM Transmitter



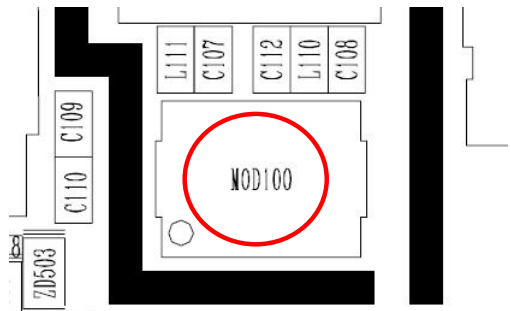
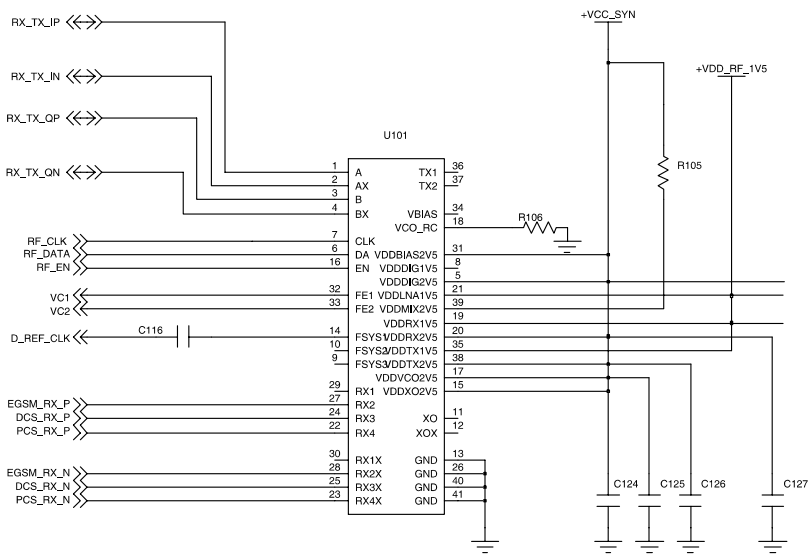
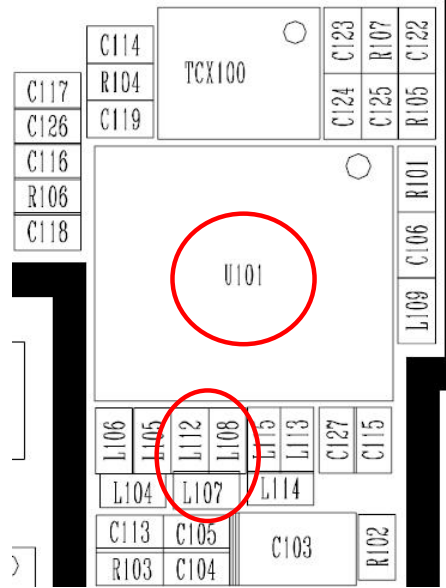
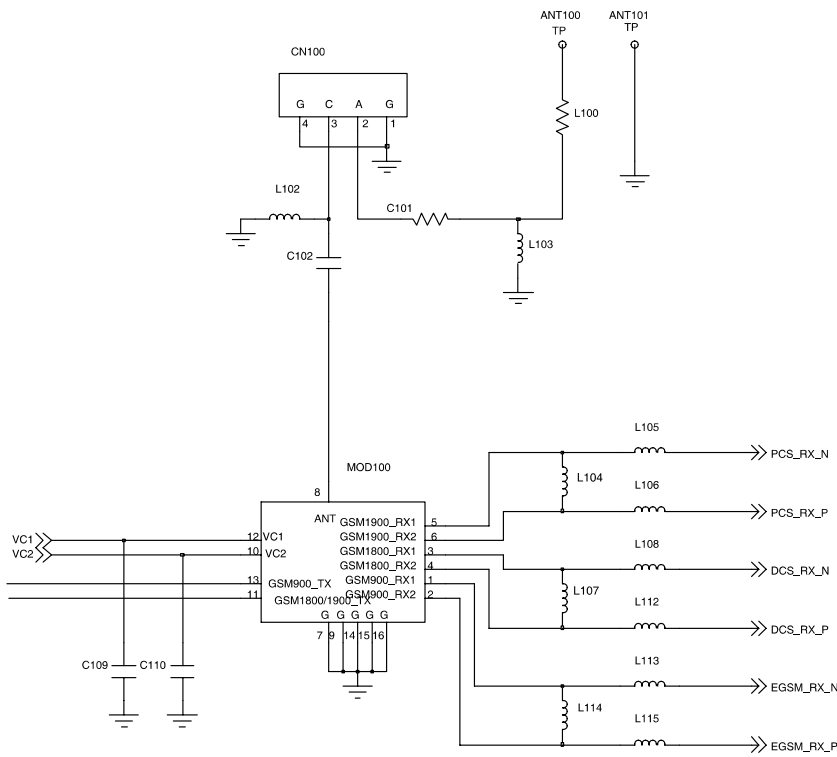
Flow Chart of Troubleshooting



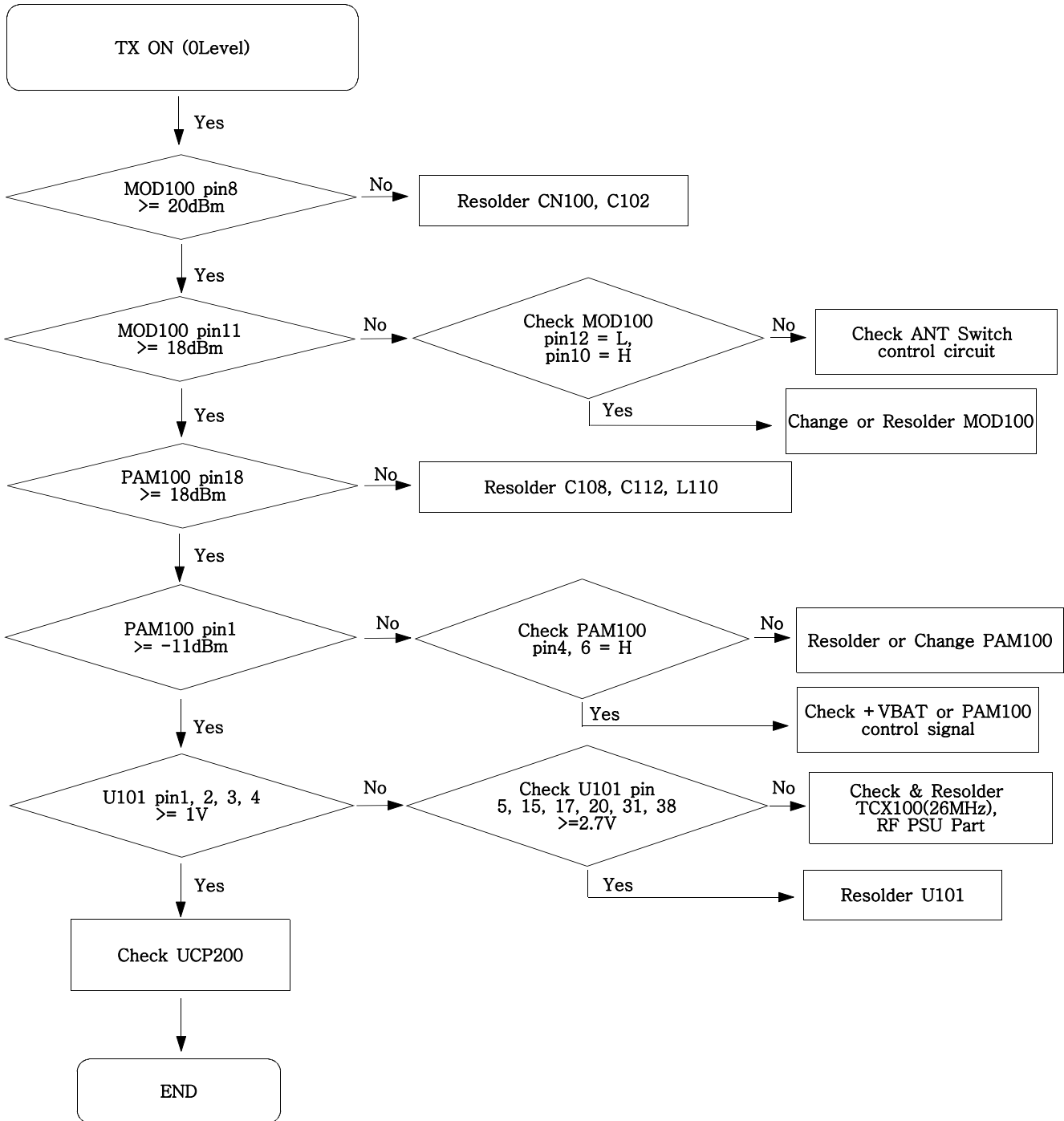
9-15. DCS Receiver



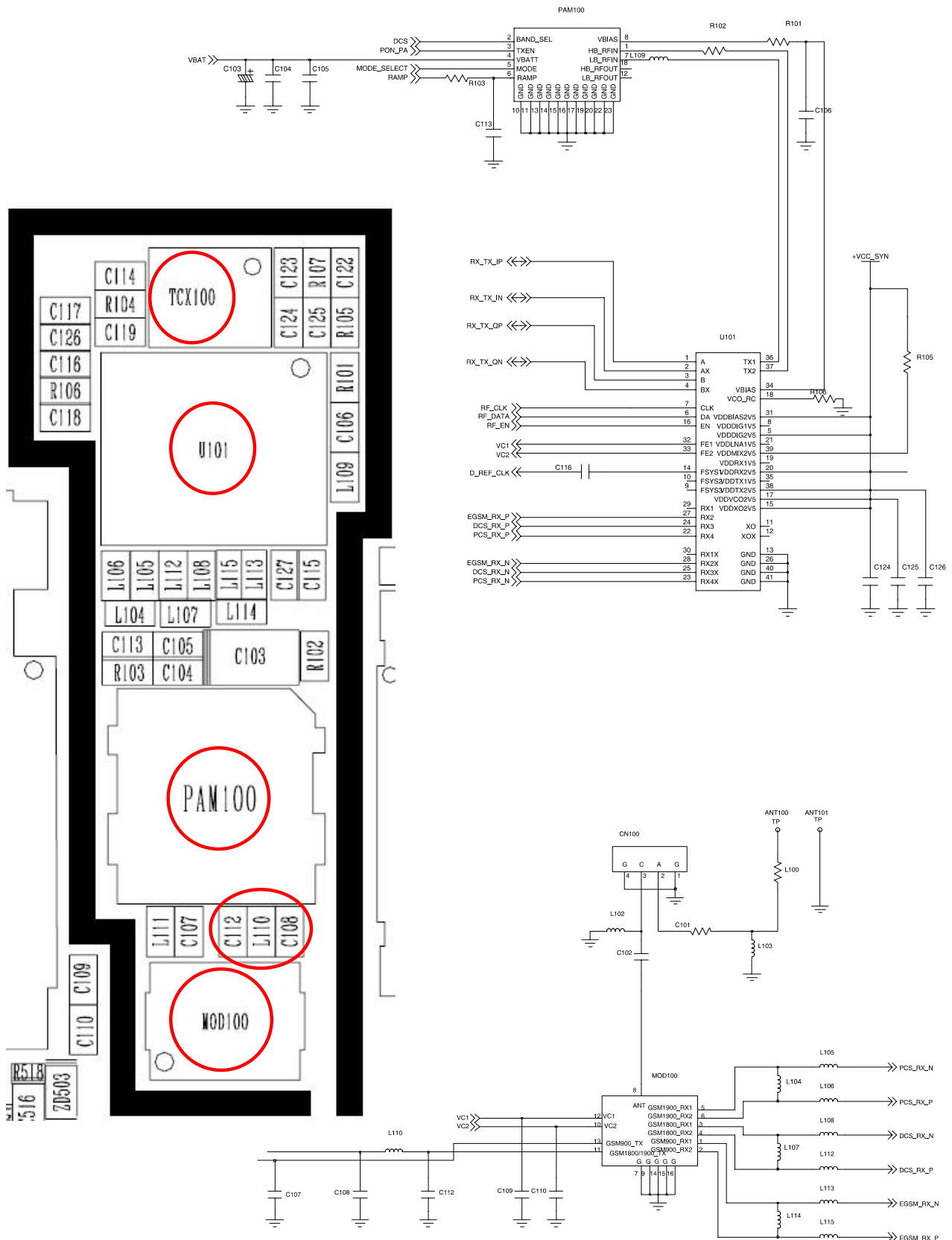
Flow Chart of Troubleshooting



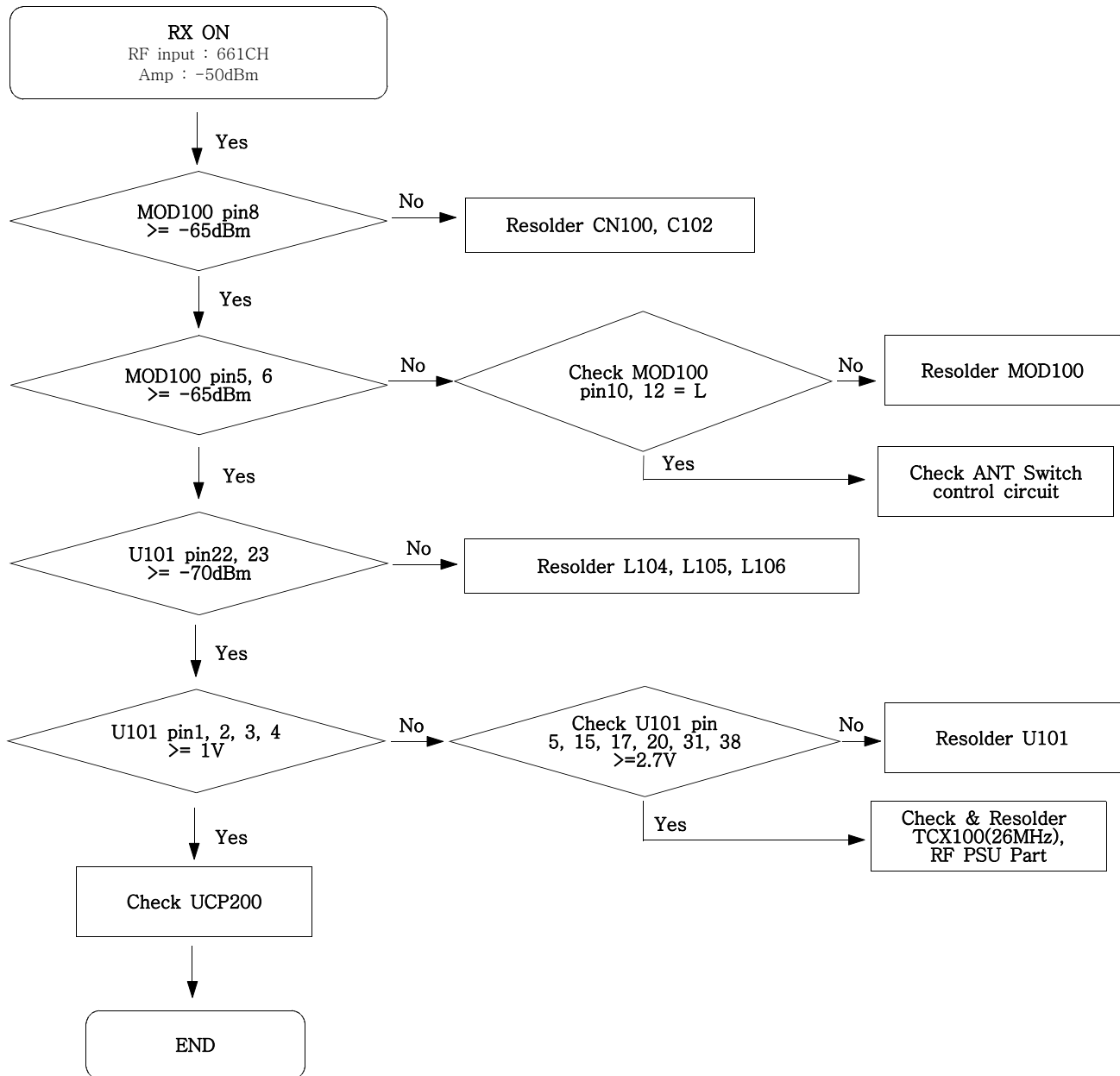
9-16. DCS Transmitter



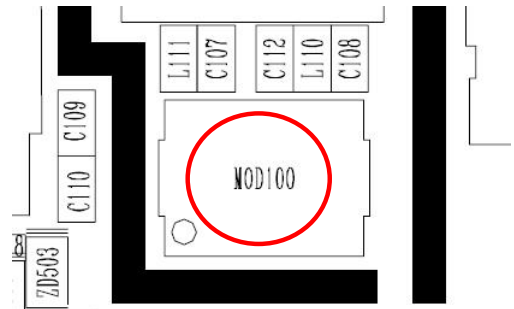
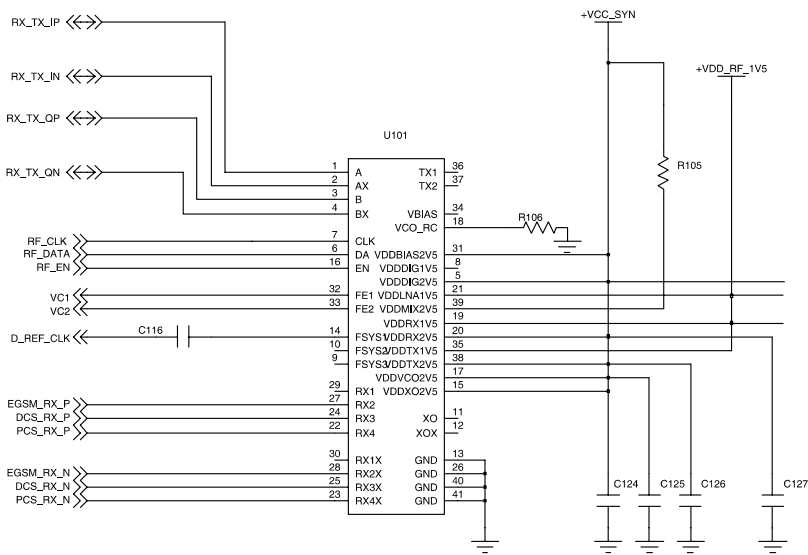
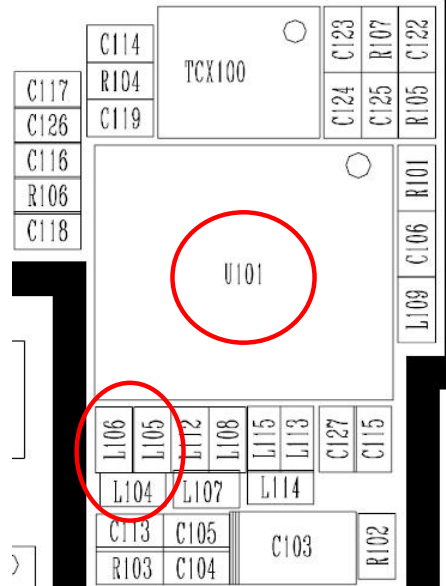
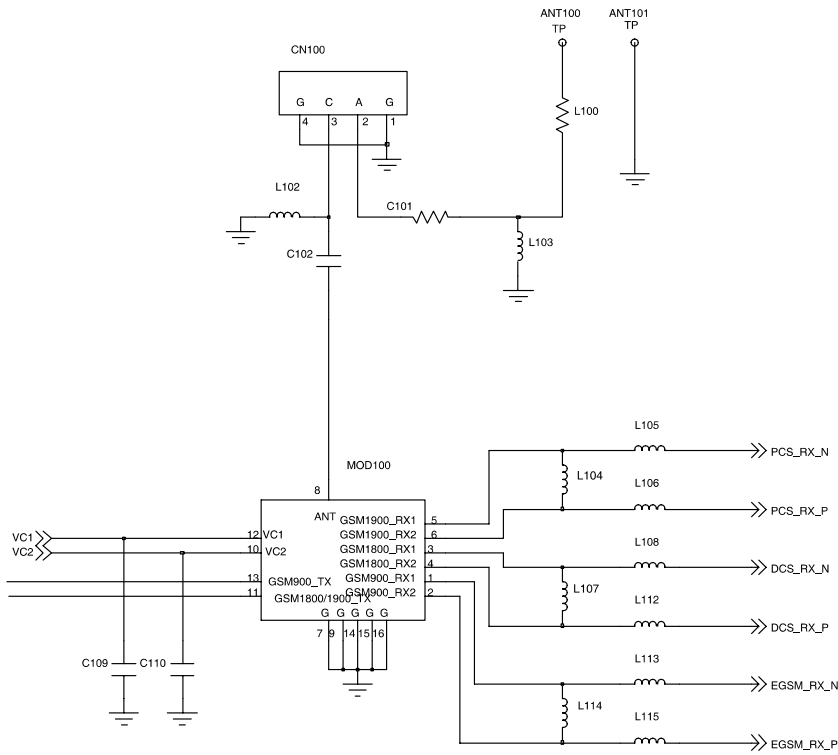
Flow Chart of Troubleshooting



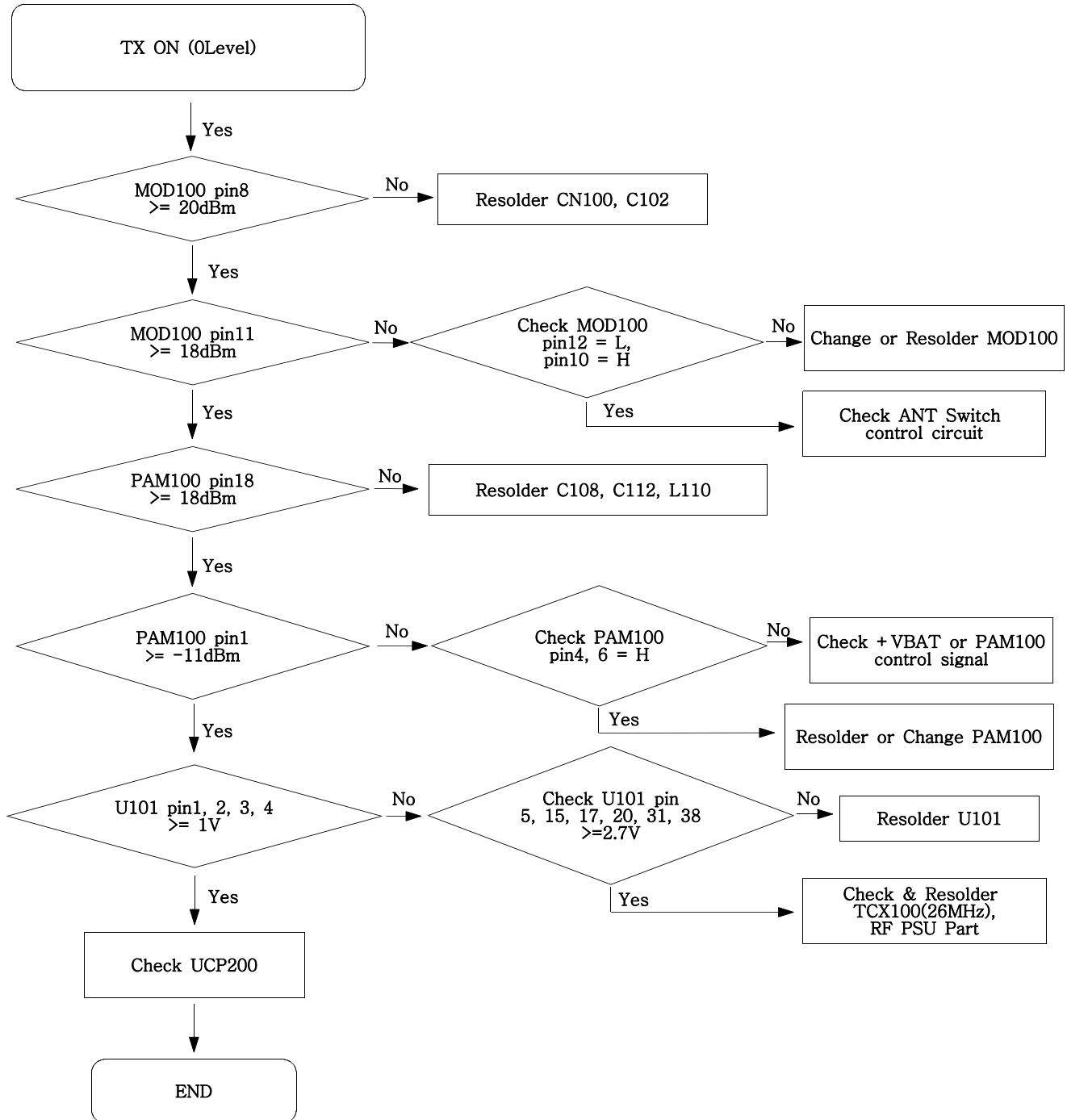
9-17. PCS Receiver



Flow Chart of Troubleshooting



9-18. PCS Transmitter



Flow Chart of Troubleshooting

