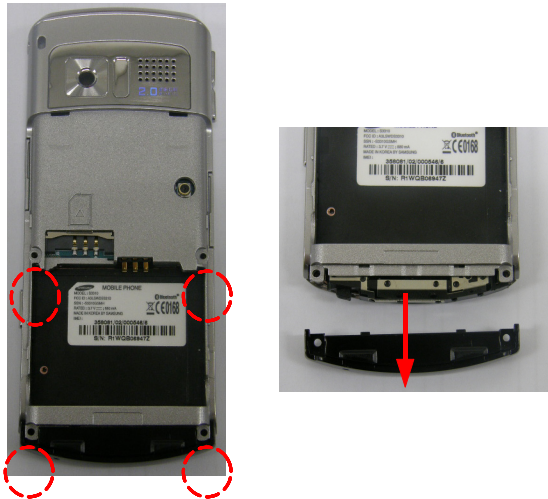


11. Disassembly and Assembly Instructions

11-1. Disassembly

1

- 1) Unscrew the 4 points.
- 2) Separate the REAR DECO and then REAR from the FRONT ass'y

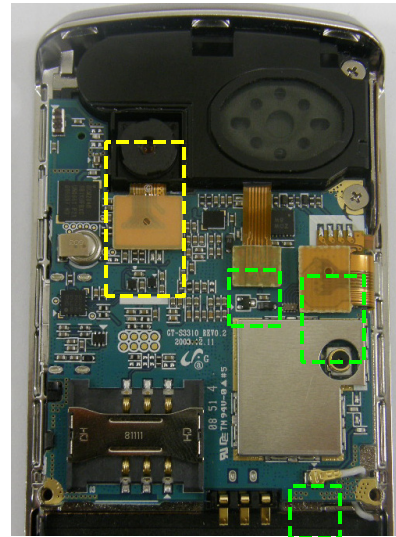


※ Caution

- 1) Be care of scratch and molding damage.

2

- 1) Separate the CAMERA MODULE from the PBA.
- 2) Separate the 3 CONNECTORS.

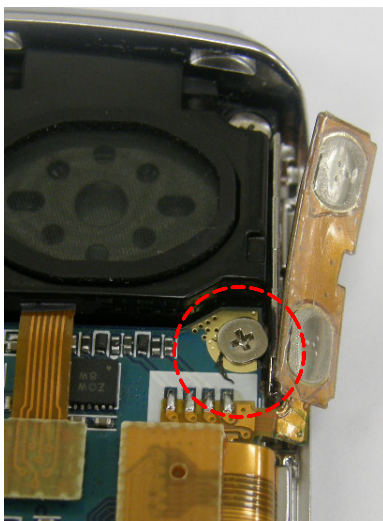


※ Caution

- 1) Be care of scratch and molding damage.
- 2) Be care of damage to F-CPB and WIRE.

3

- 1) Detach the SLIDE FPCB TAPE from BRACKET.
- 2) Unscrew 1 point.

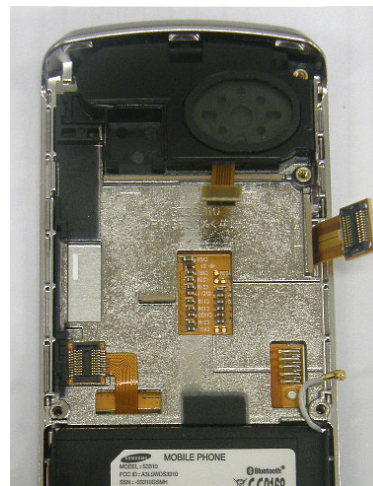


※ Caution

- 1) Be care of damage to F-CPB..

4

- 1) Separate the PBA from the FRONT ASS'Y - KEY CONNECTOR



※ Caution

- 1) Be care of scratch and molding damage.
- 2) Be care of damage to F-CPB..

5

1) Separate the BRACKET ASS'Y from the FRONT.

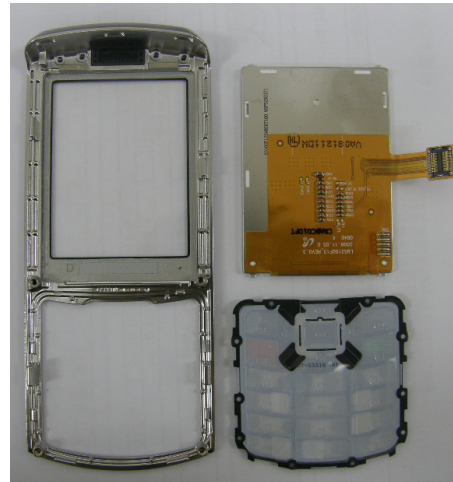


※ Caution

1) Be care of scratch and molding damage.

6

1) Separate LCD and KEYPAD from the FRONT CASE.



※ Caution

1) Be care of scratch and molding damage.
2) Be care of damage to the LCD.

7

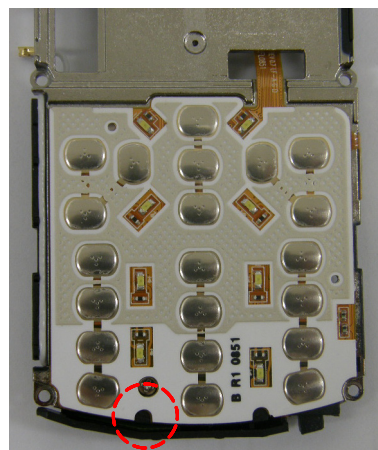
1) Unscrew the 1 points.
2) Separate the SPEAKER MODULE from the BRACKET.



※ Caution

8

1) Unscrew the 1 points.
2) Separate the INTENNA from the BRACKET.

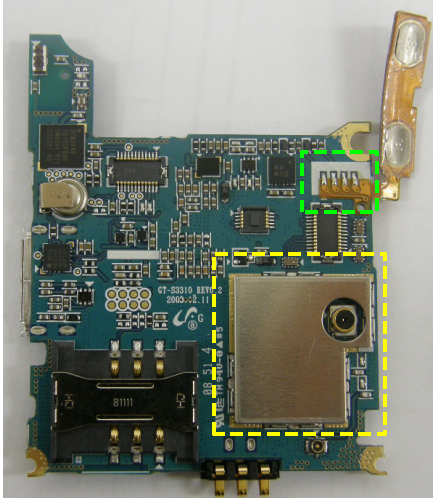


※ Caution

11-2. Assembly

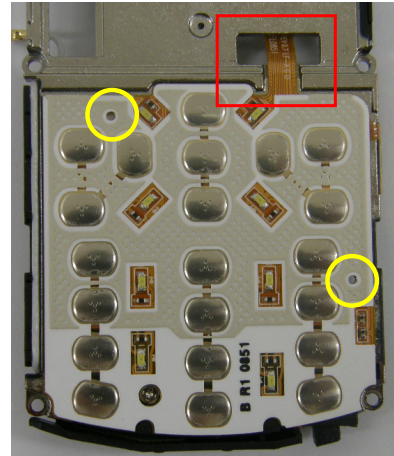
1

- 1) Assemble the SHIELD CAN on the PBA.
- 2) Solder the SIDE KEY F-CPB like below.



2

- 1) Attach the DOMESHEET.
- Be care of damage the KEY CONNECTOR.



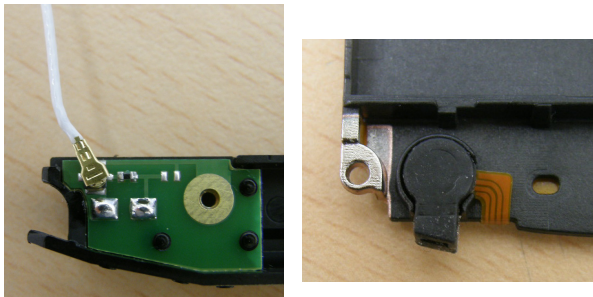
※ **Caution**

※ **Caution**

- 1) Be care of damage the KEY CONNECTOR.

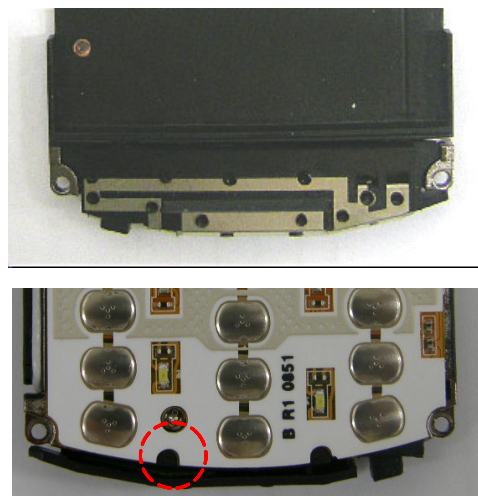
3

- 1) Connect the COAXIAL CABLE to INTENNA CONNECTOR.
- 2) Place the MIC on the BRACKET GUIDE.



4

- 1) Assemble the INTENNA on the BRACKET.
- 2) Screw 1 point.



※ **Caution**

- 1) Be care of damage the INTENNA.
- 2) Be care of damage to MIC F-CPB.

※ **Caution**

- 1) Be care of damage the INTENNA.

5

- 1) Place the LCD and KEYPAD on the FRONT CASE.
- 2) Assemble the BRACKET ASS'Y and FRONT ASS'Y.



6

- 1) Assemble the SPEAKER MODULE.
- 2) Screw 1 point.



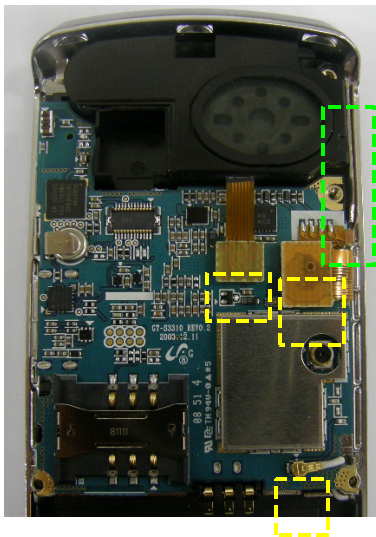
※ Caution

- 1) Be care of scratch and molding damage.

※ Caution

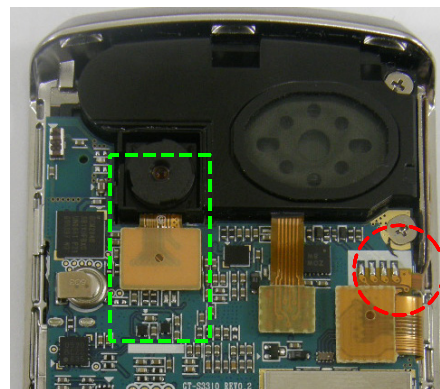
7

- 1) Place the PBA on the BRACKET ASS'Y.
- 2) Connect the 3 CONNECTORS.
- 3) Attach the SIDE KEY FPCB to the BRACKET.



8

- 1) Screw 1 point.
- 2) Connect the CAMERA MODULE.



※ Caution

- 1) Be care of damage to F-CPB and WIRE.

※ Caution

- 1) Be care of damage to F-CPB and WIRE.

9

1) Assemble the REAR CASE and REAR DECO to the ASSY.



10

1) Screw down the 4 points.



※ Caution

1) Be care of scratch and molding damage.

※ Caution

1) Be care of scratch and molding damage.