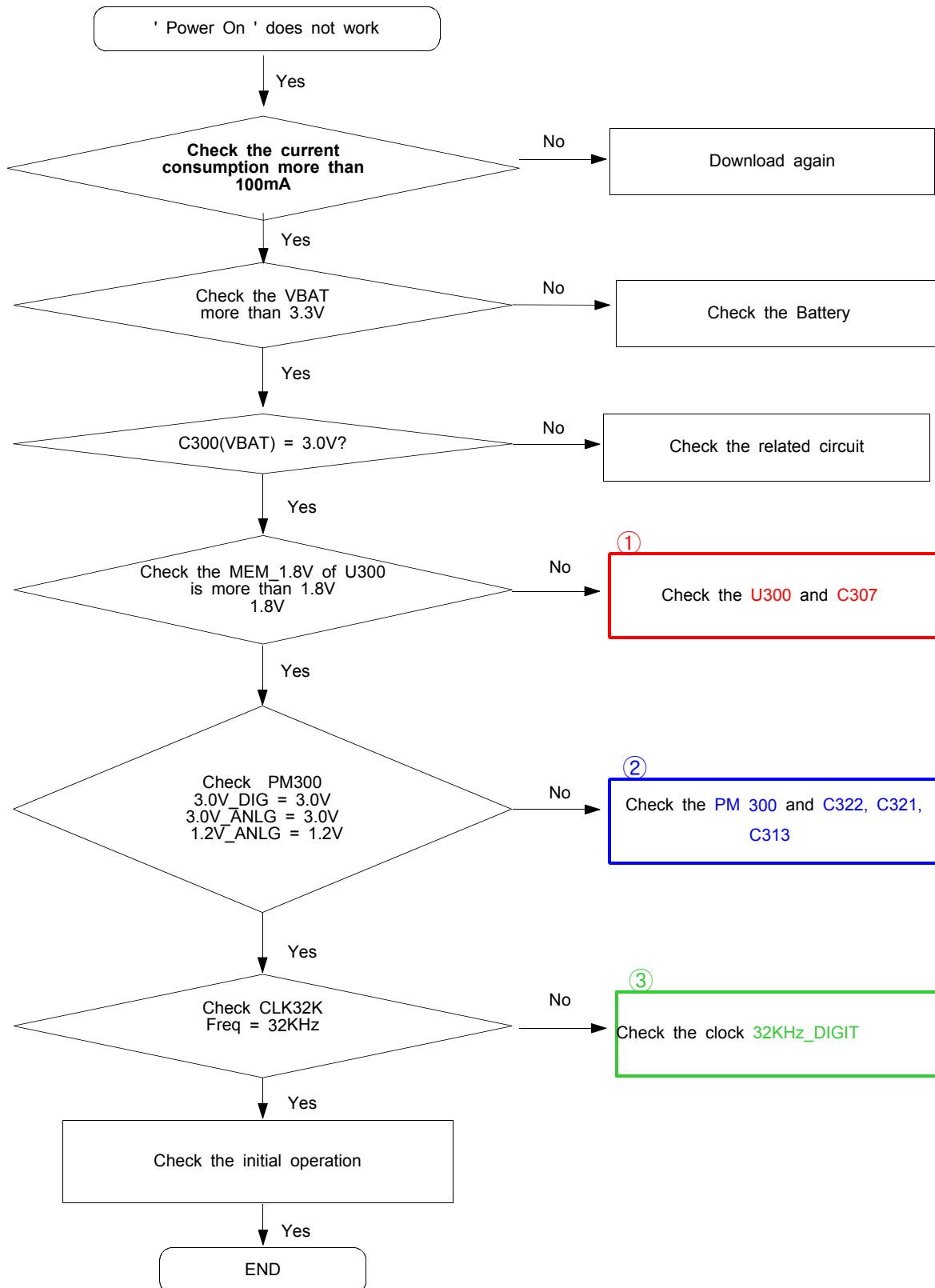
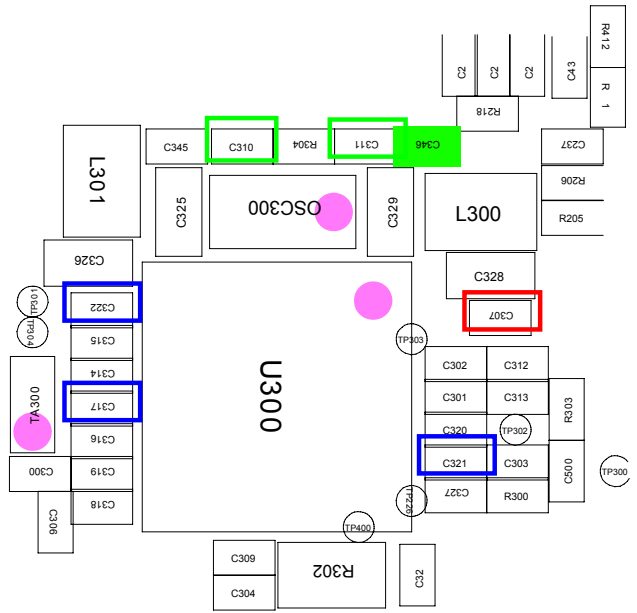
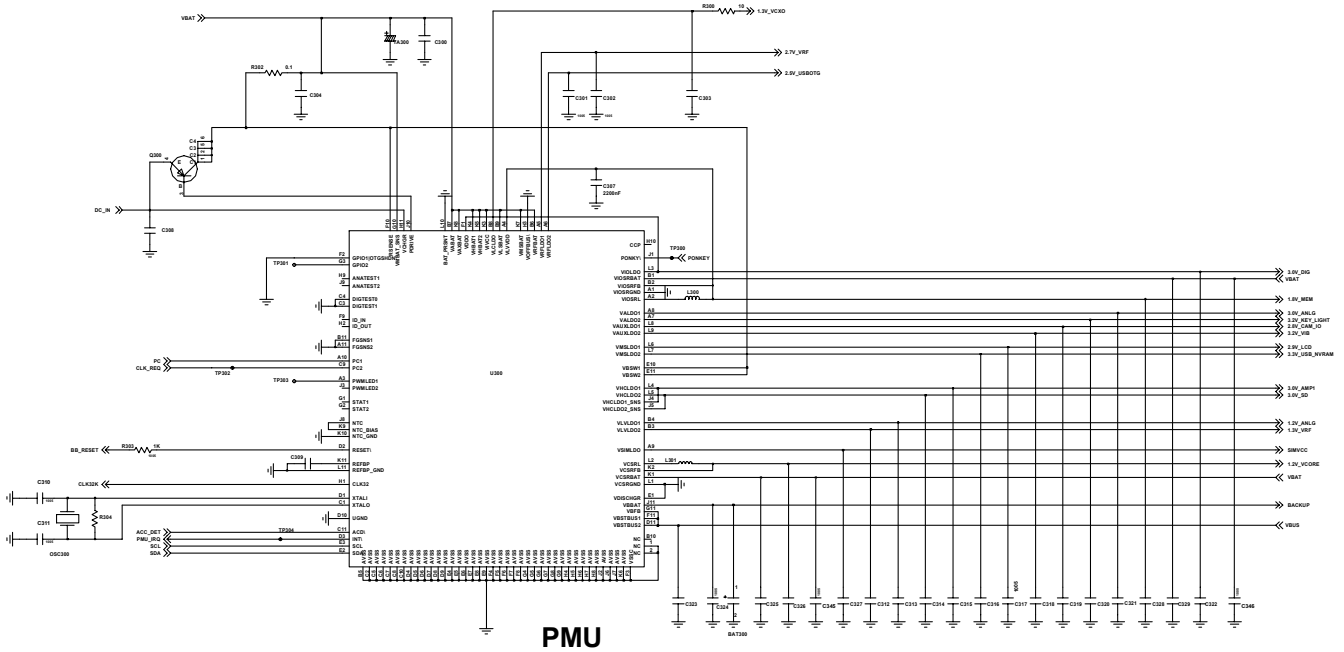


9. Flow Chart of Troubleshooting

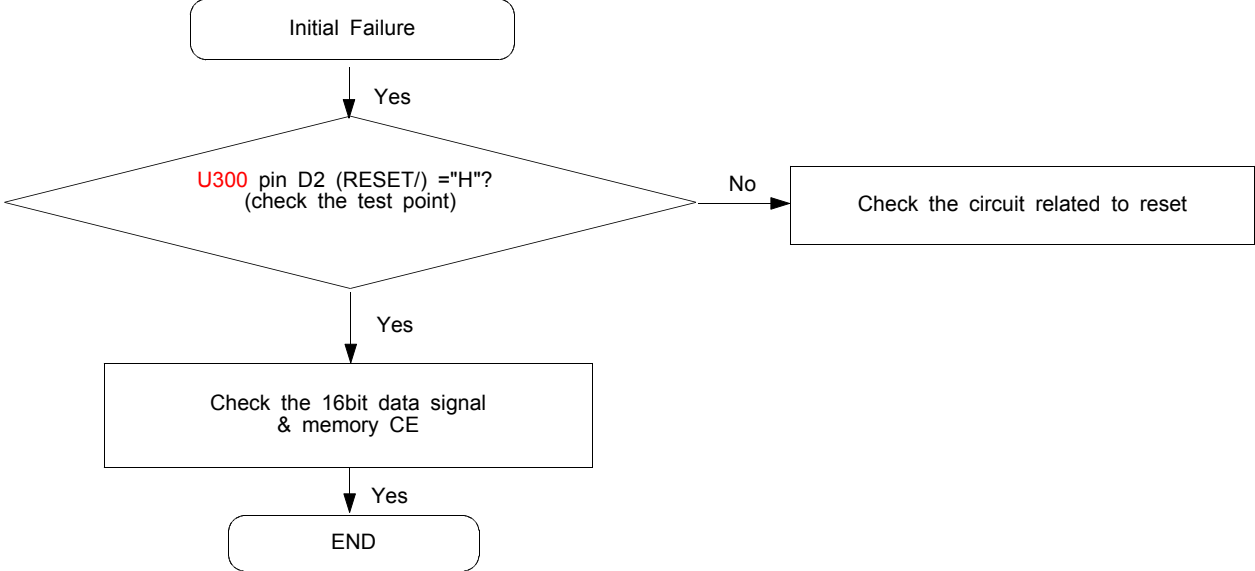
9-1. Power On

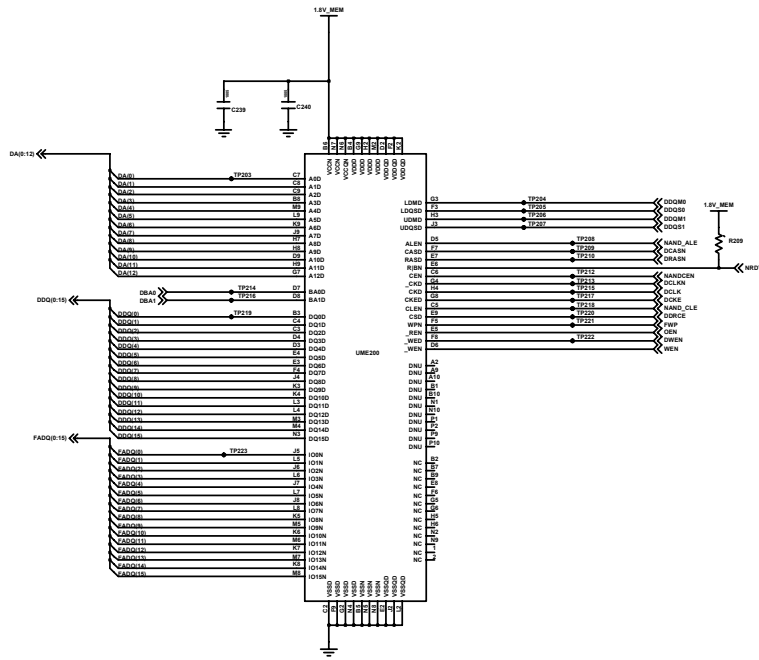


Flow Chart of Troubleshooting

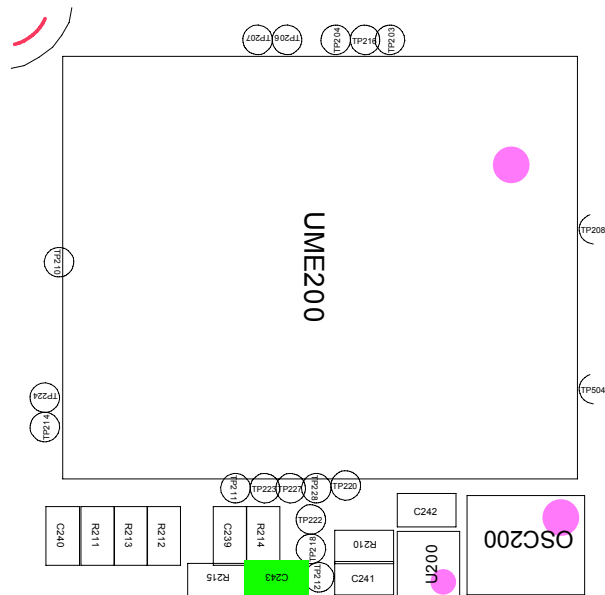


9-2. Initial

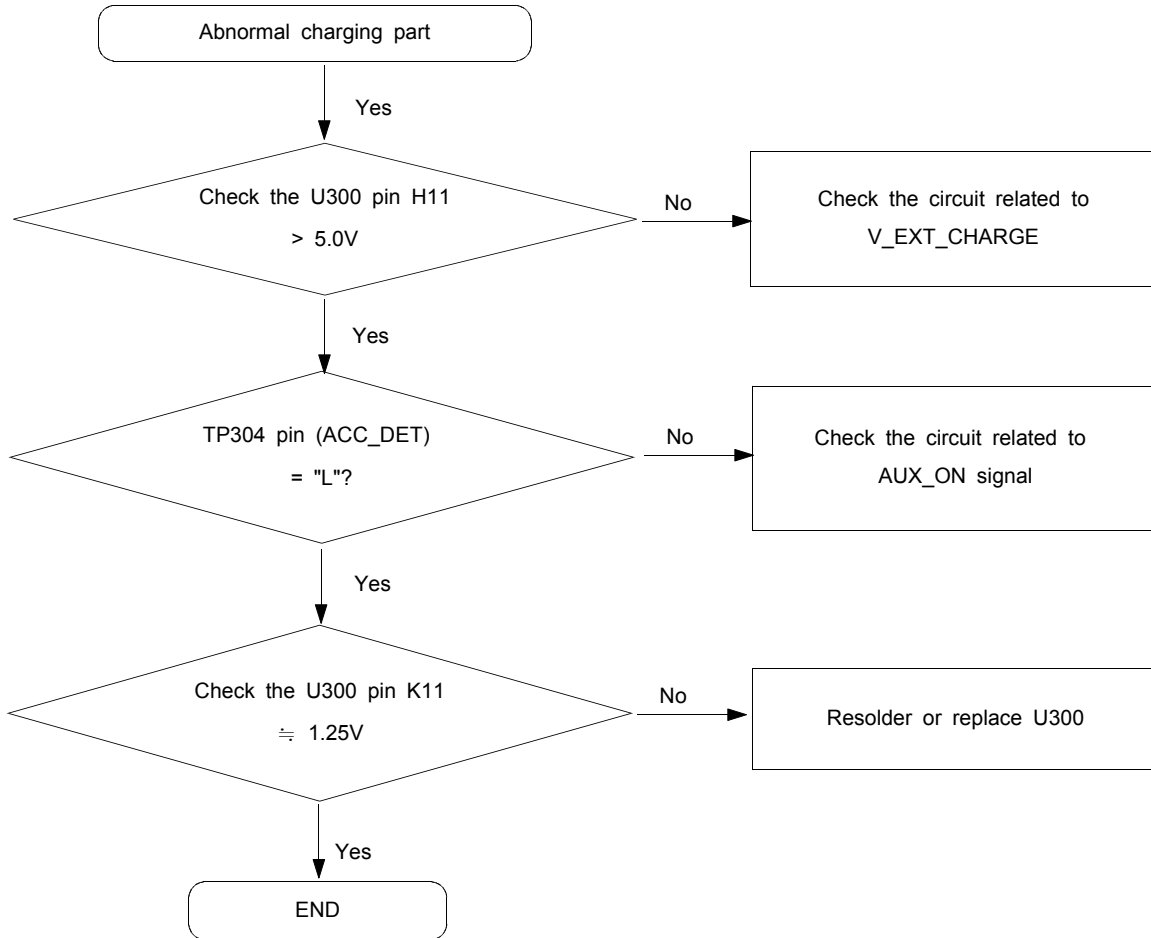




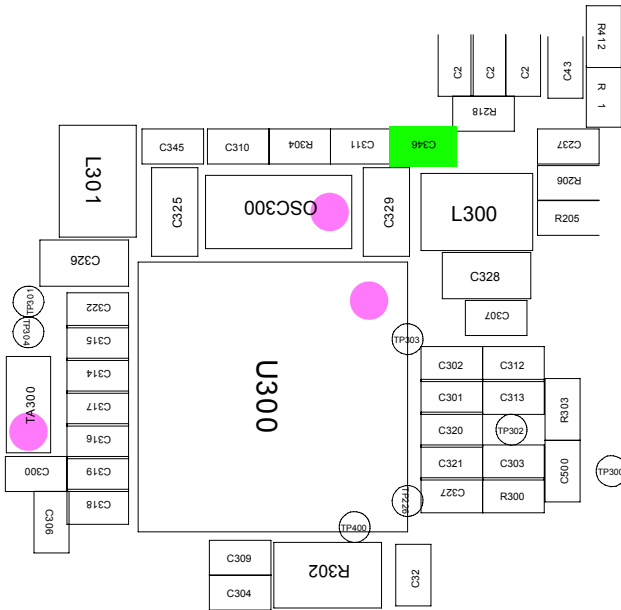
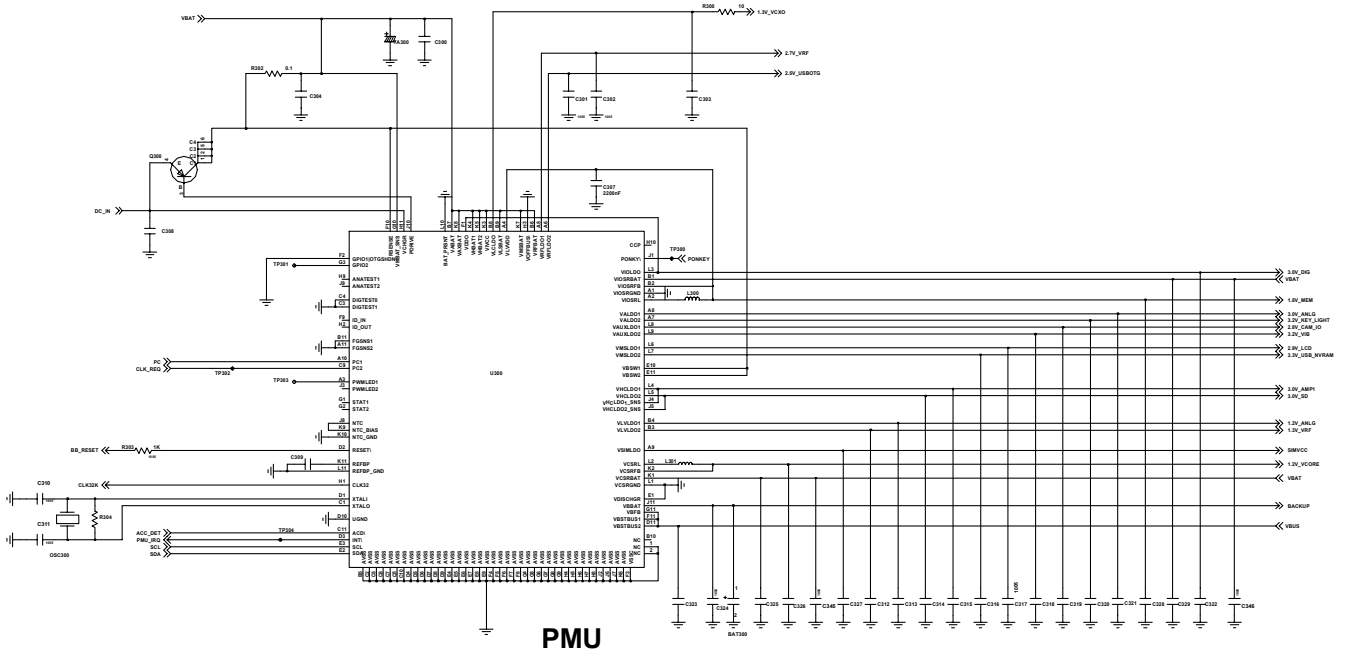
**MEMORY(Large Block NAND)
(1Gb NAND + 512Mb DDRAM)**



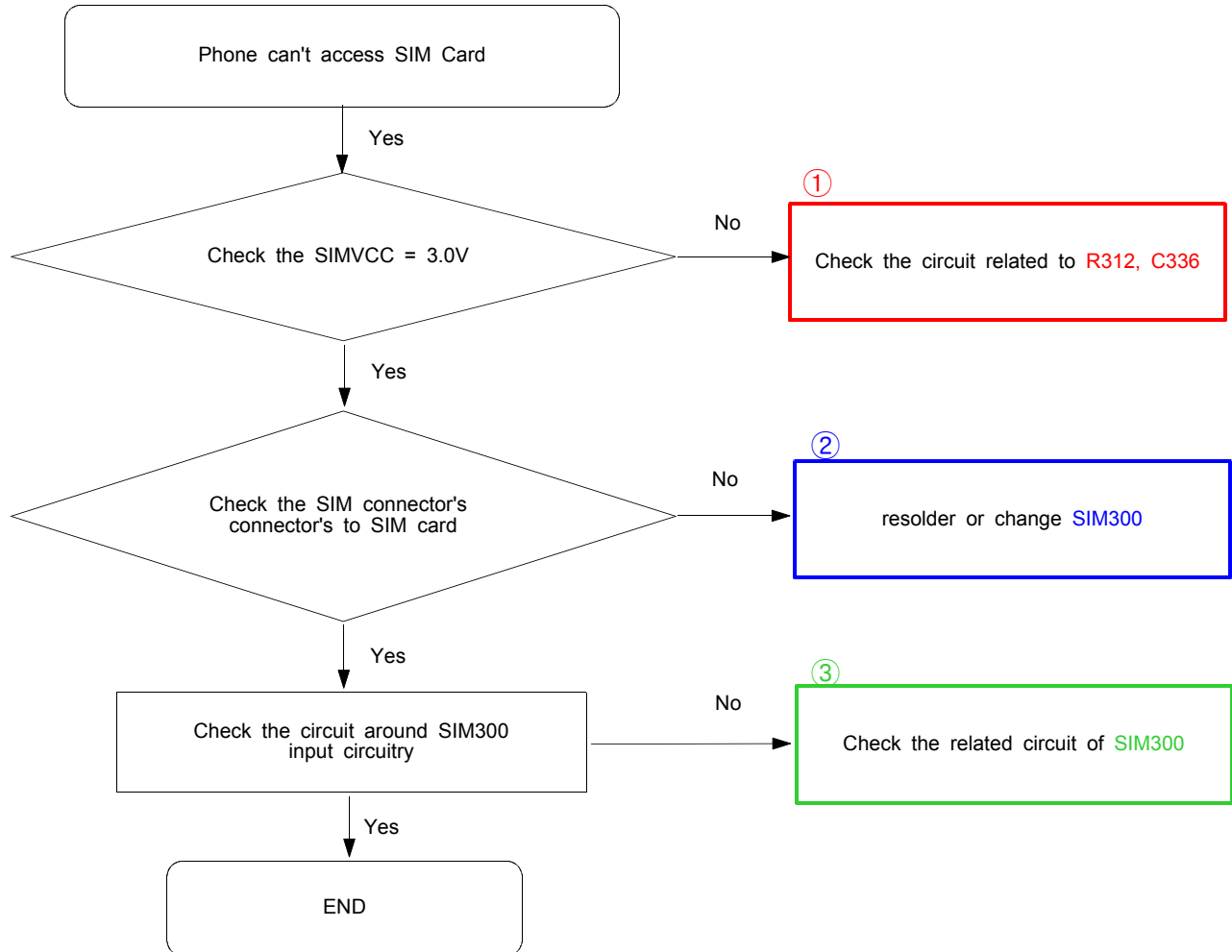
9-3. Charging Part

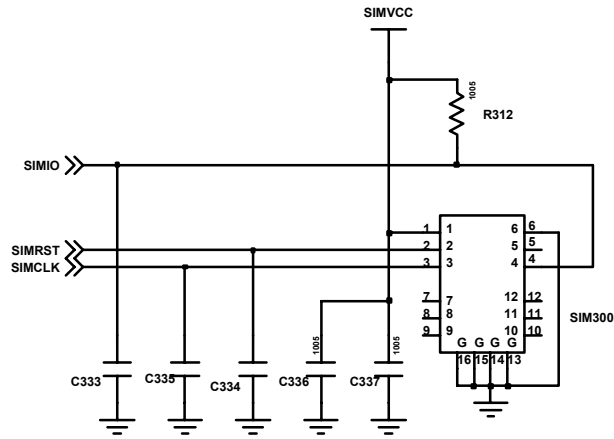


Flow Chart of Troubleshooting



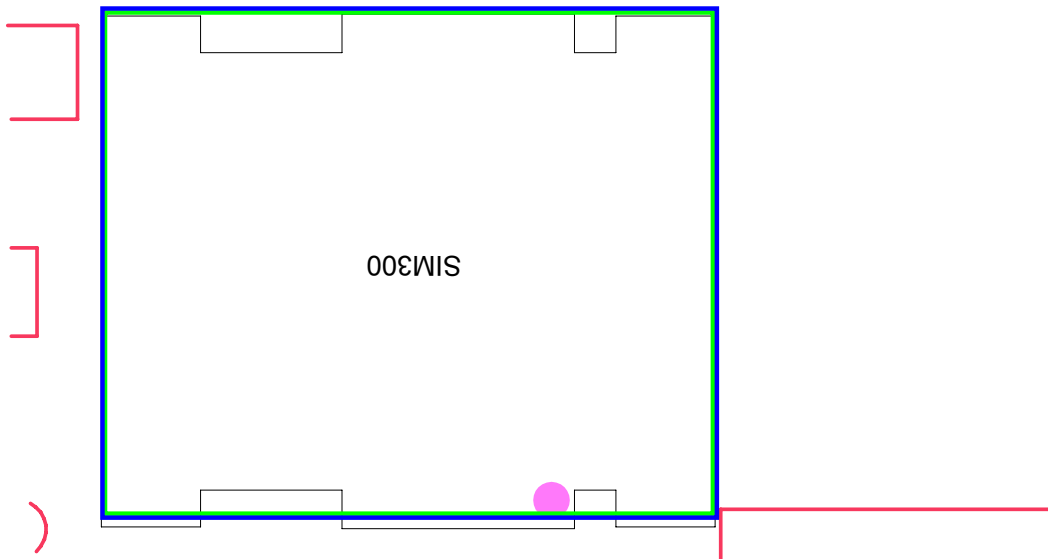
9-4. Sim Part



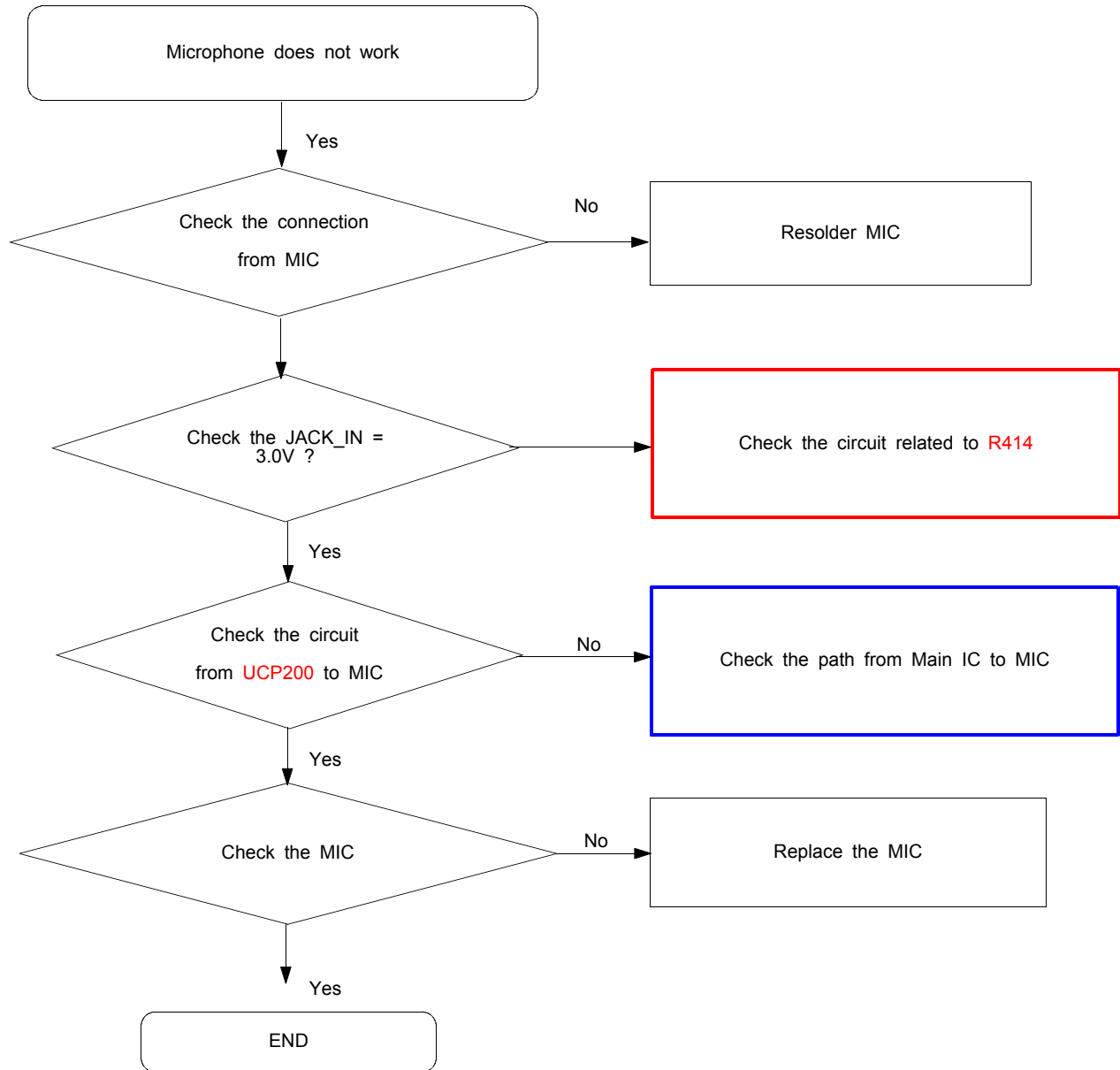


SIM CONNECTOR

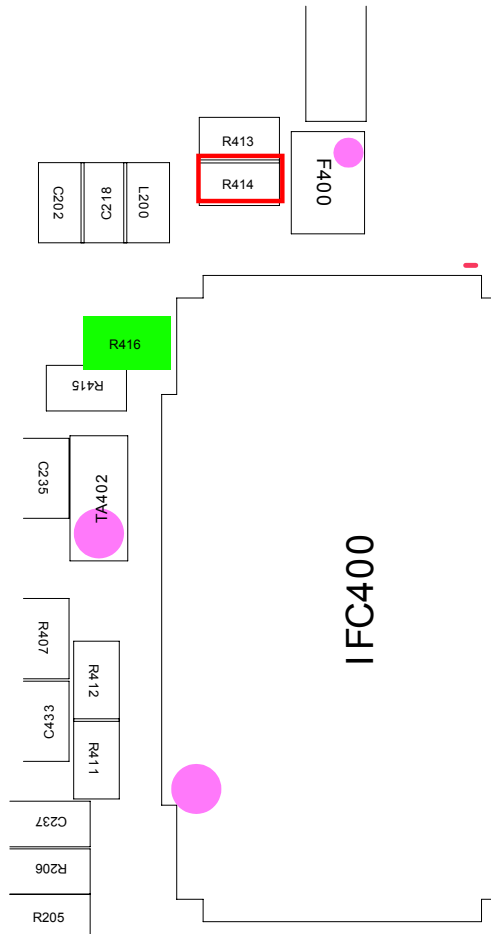
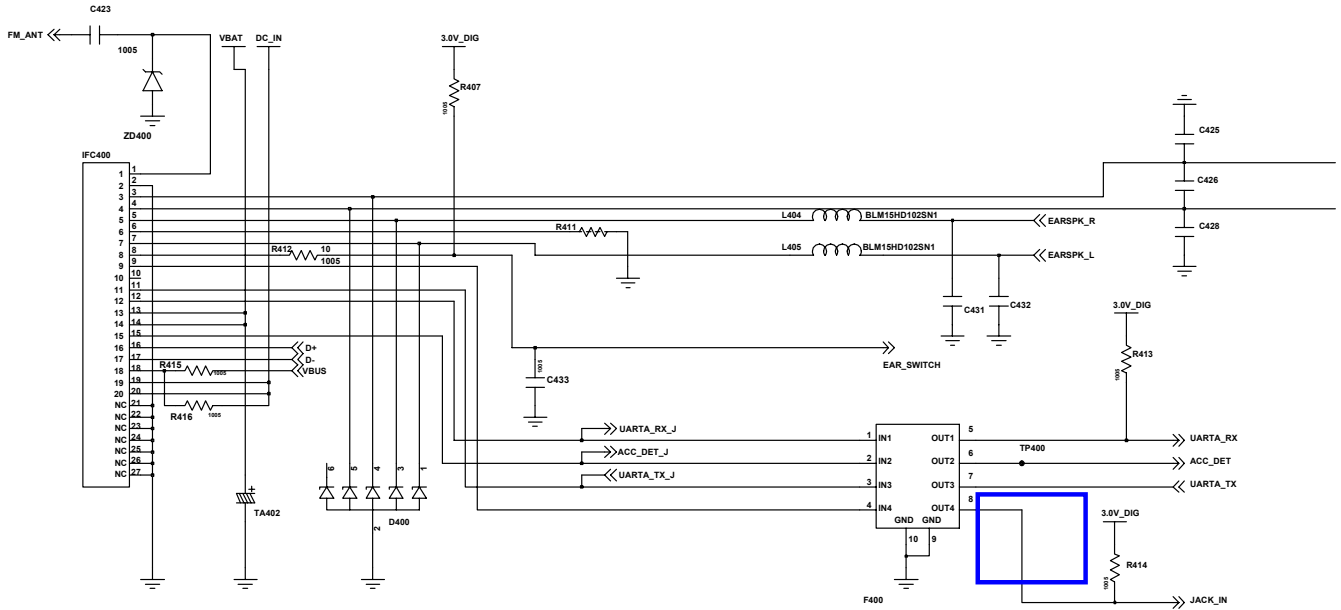
C102	C423	00K0Z		
R222	C334	C333	R312	C336
C335				C337



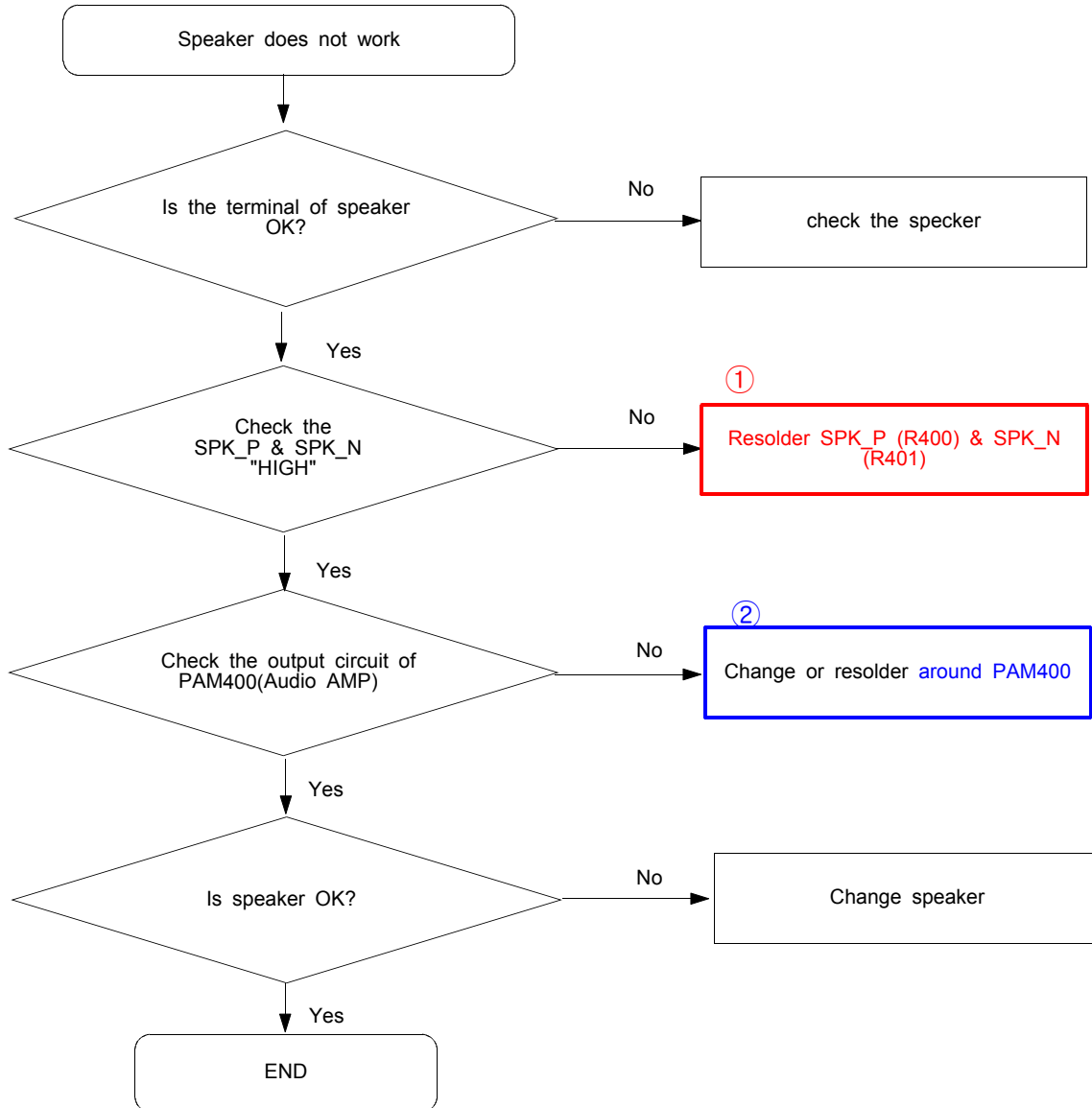
9-5. Microphone Part

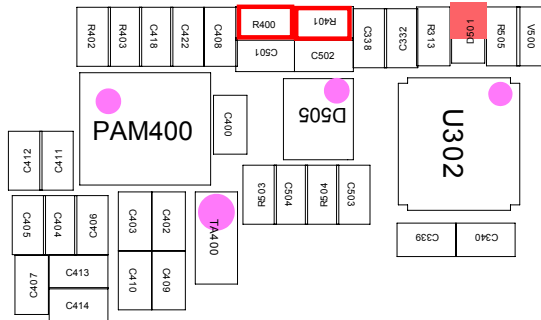
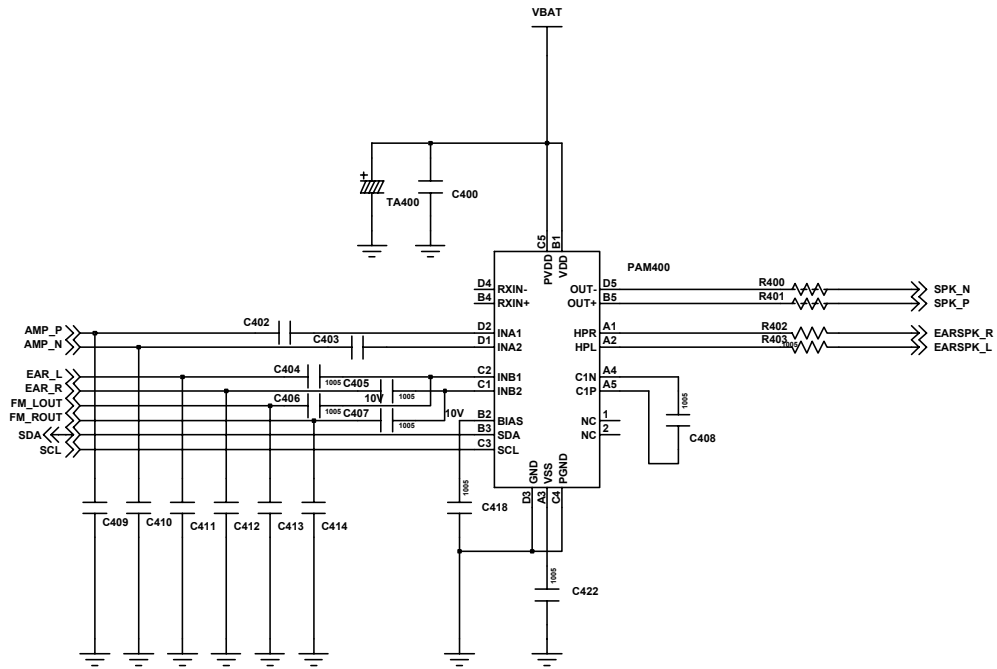


Flow Chart of Troubleshooting

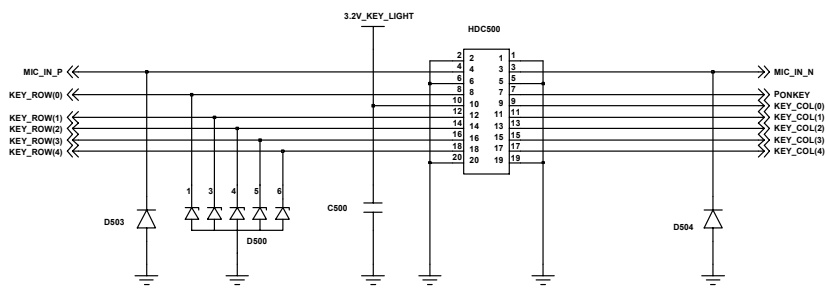
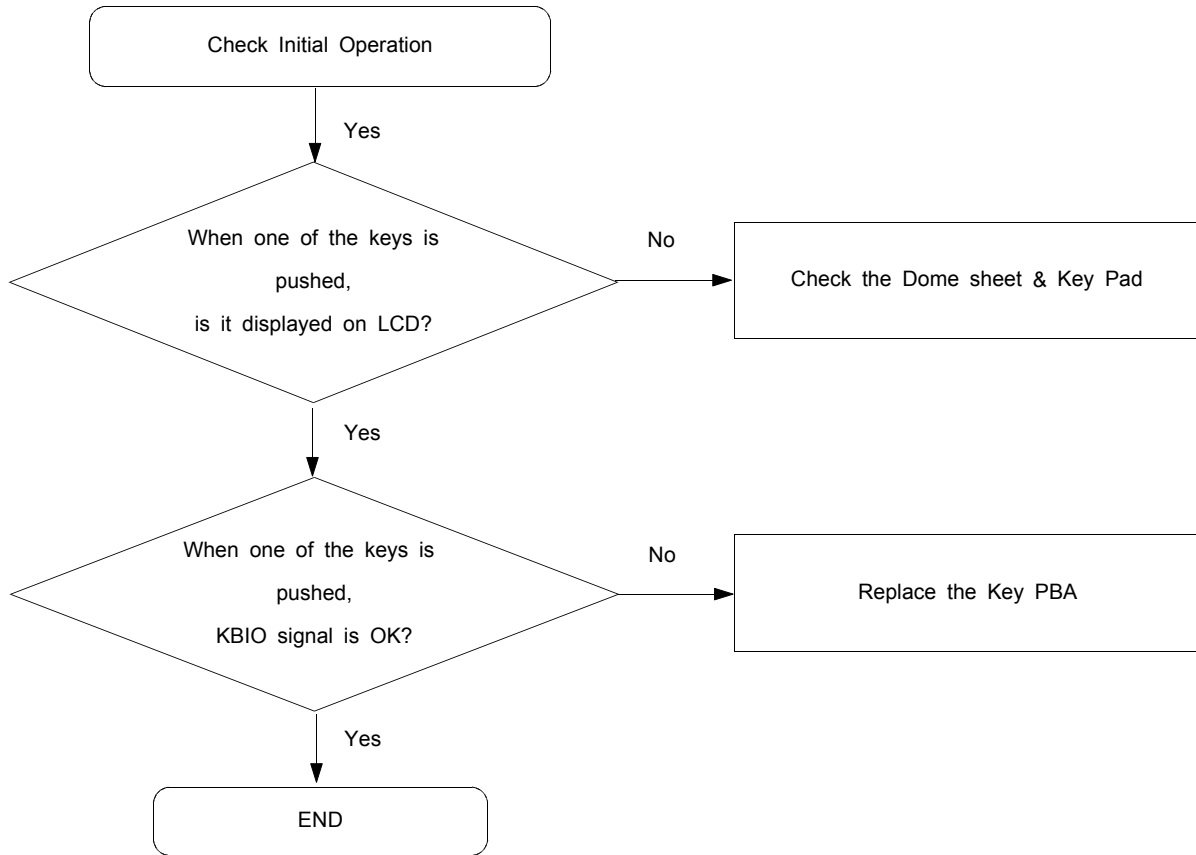


9-6. Speaker Part(Melody)

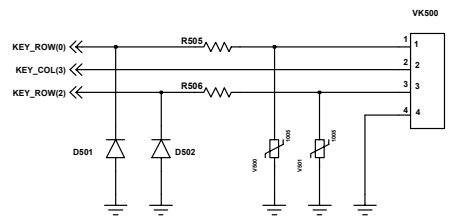




9-7. Key Data Input

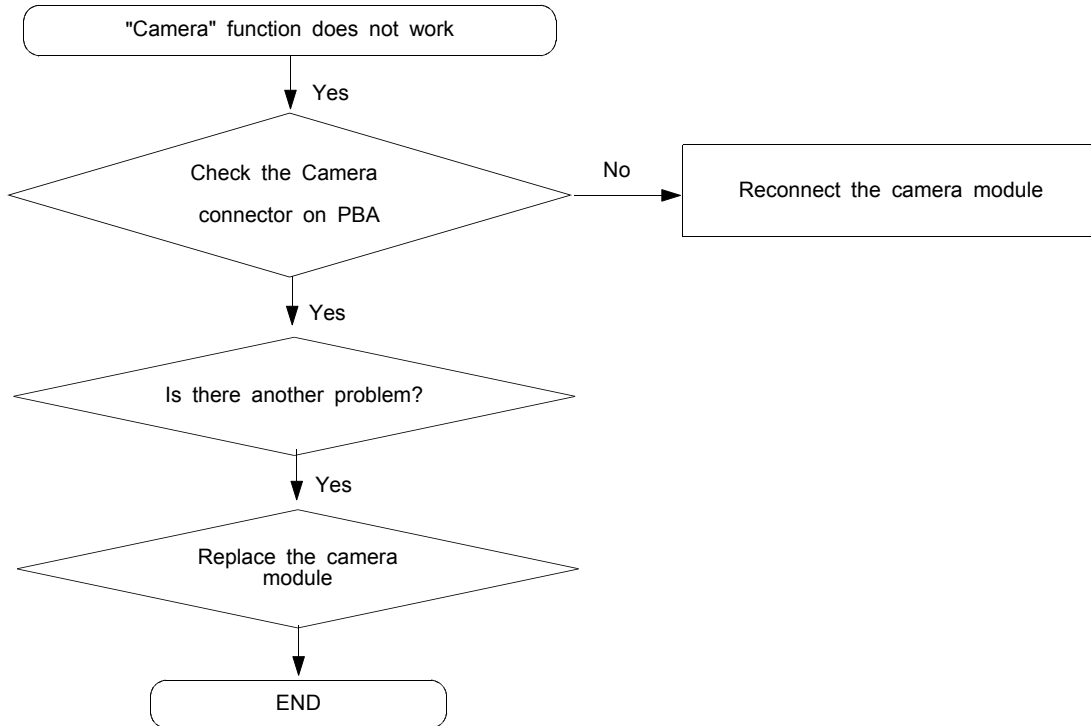


KEY CONNECTOR

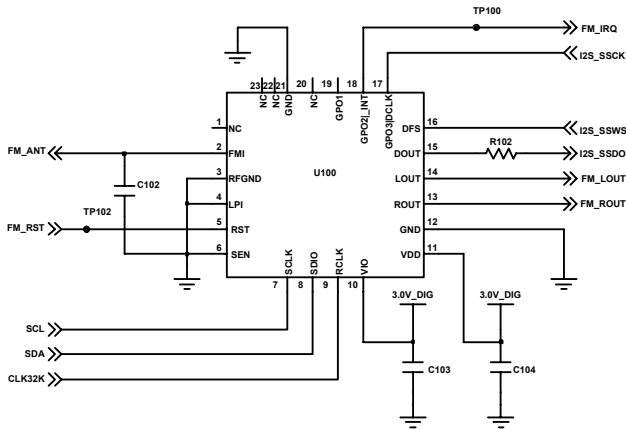
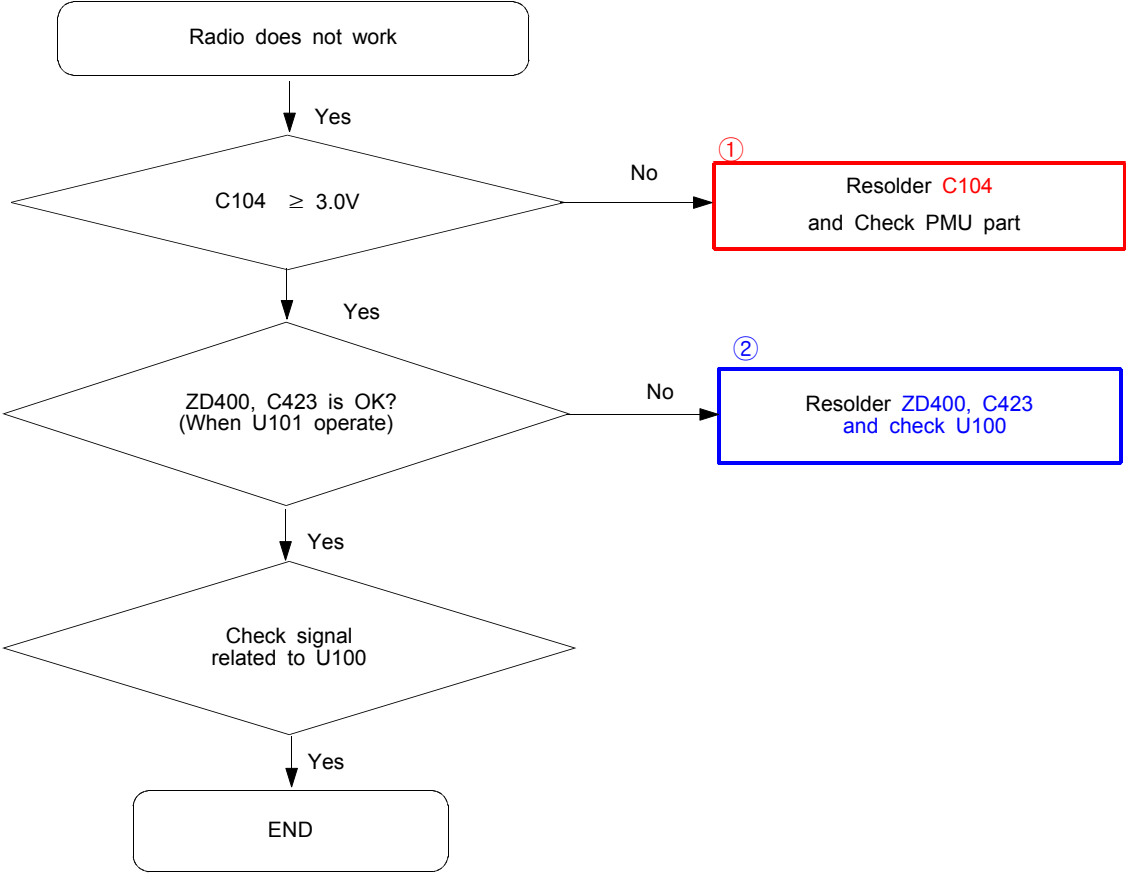


VOLUME KEY

9-8. Camera part

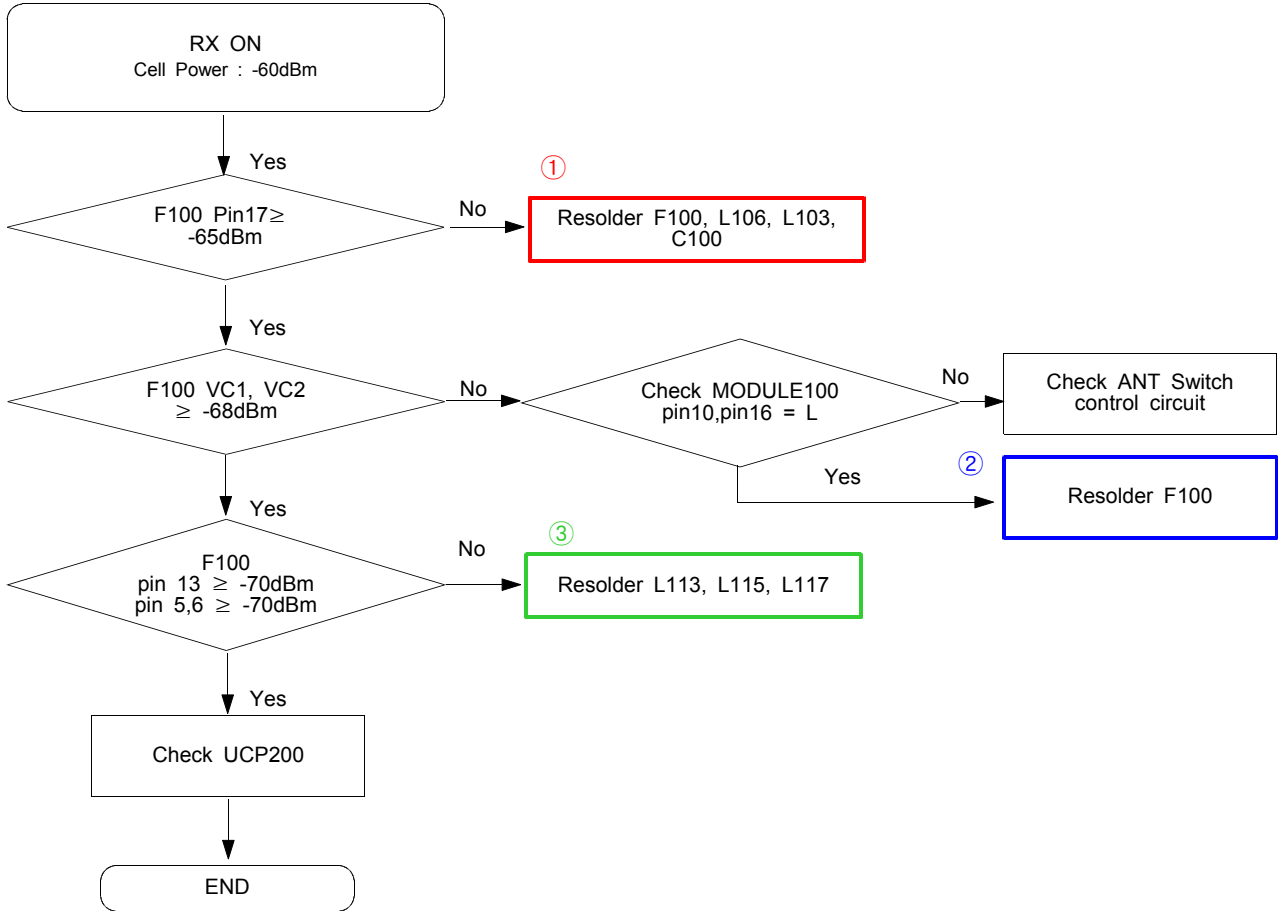


9-9. Radio part

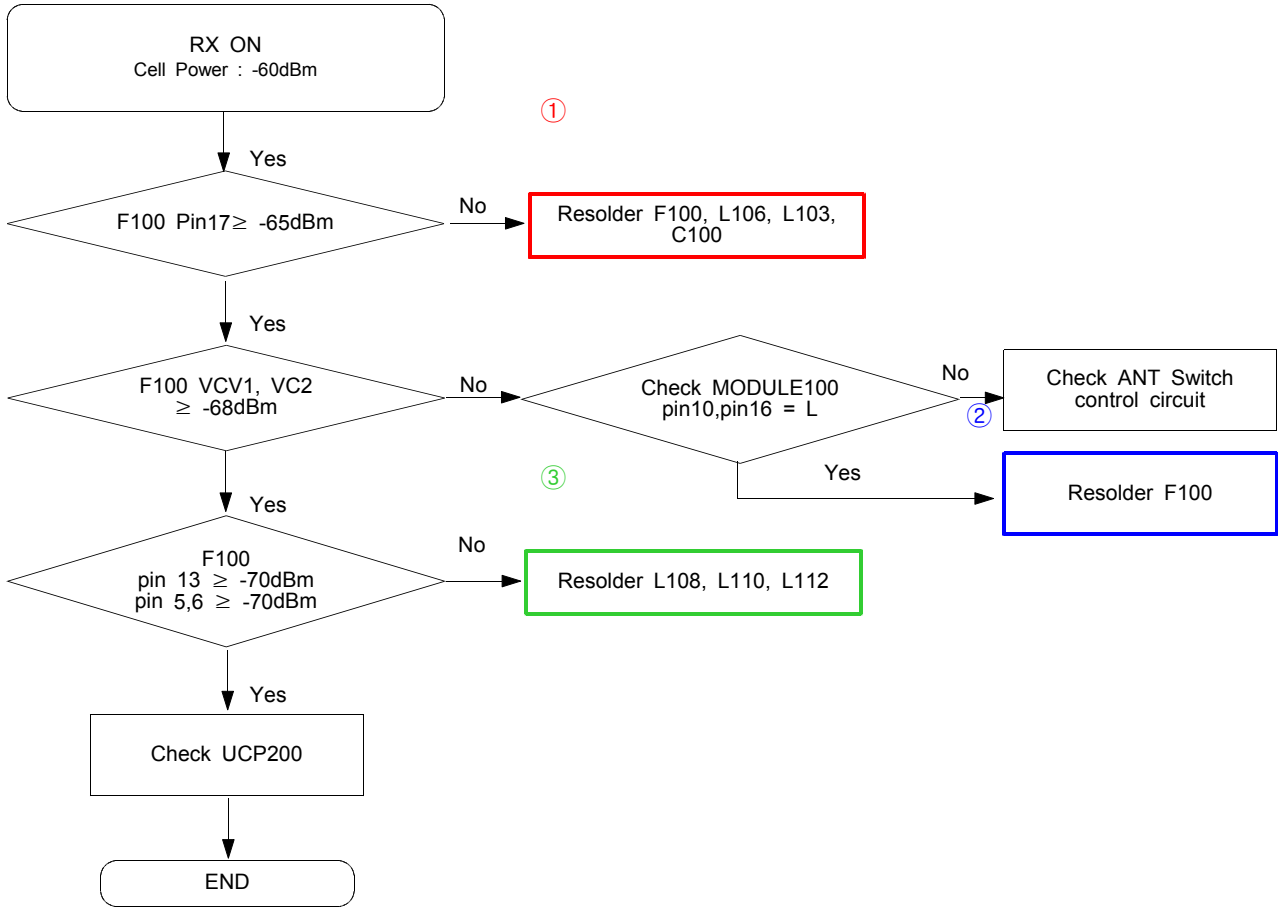


FM RADIO

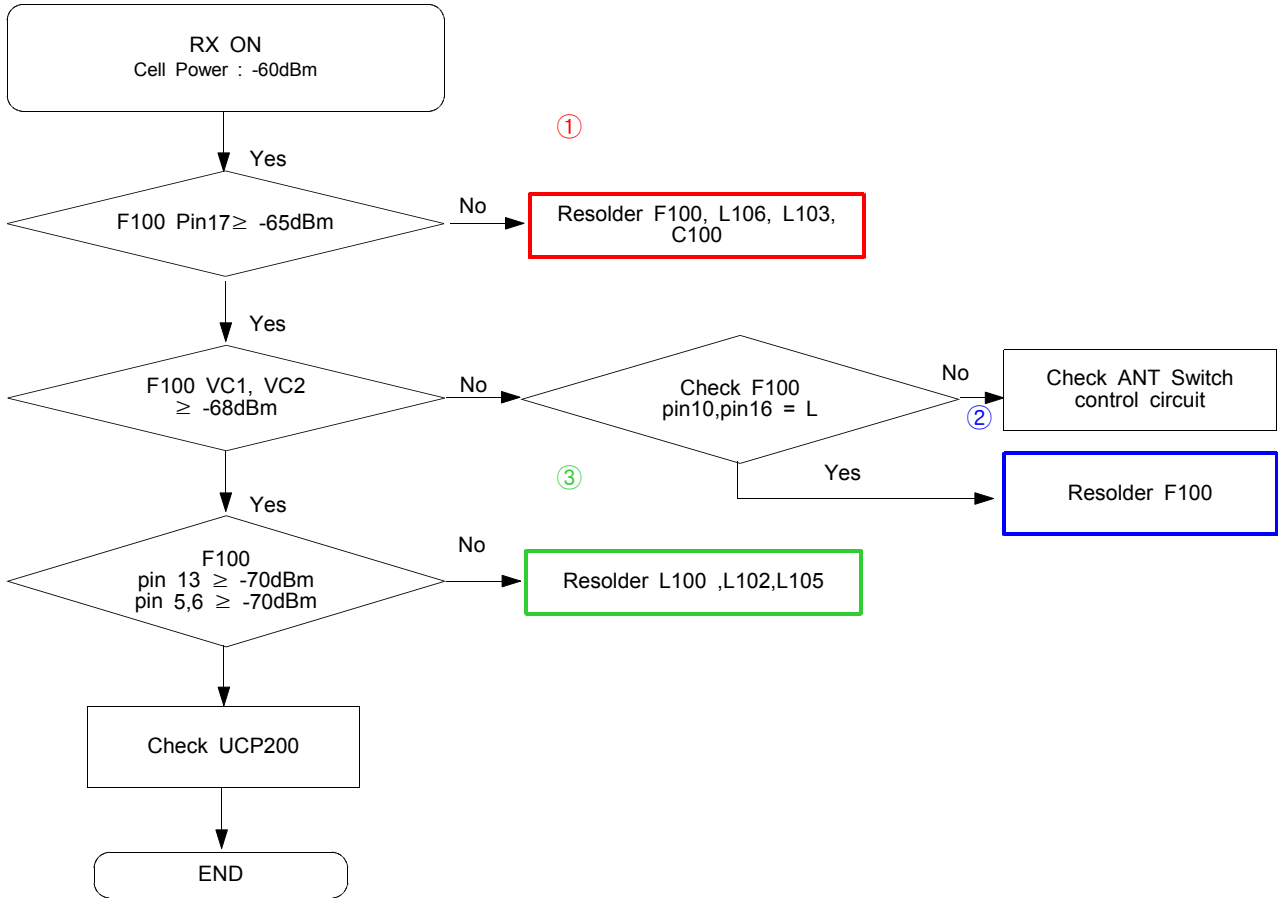
9-10. GSM Receiver



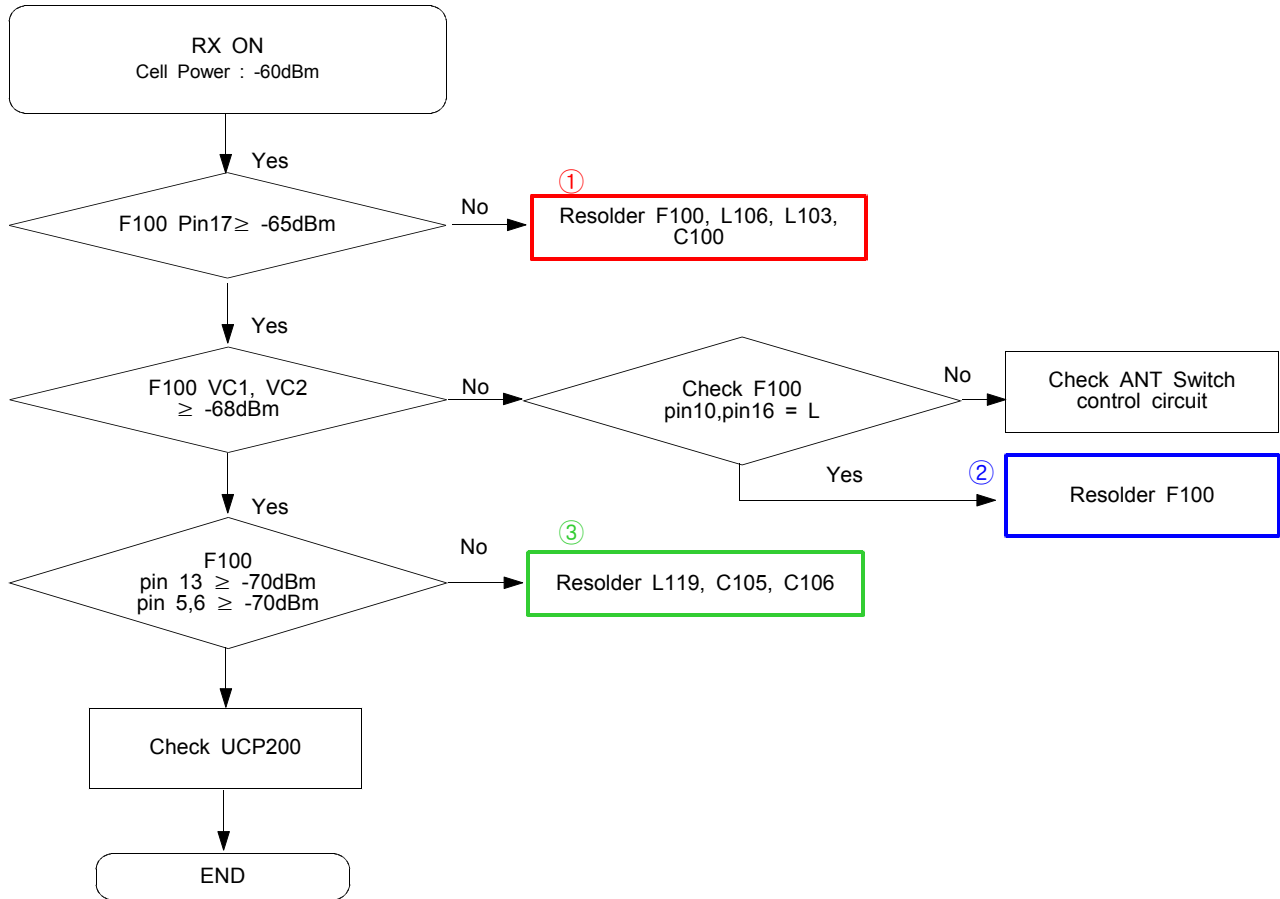
9-11. DCS Receiver

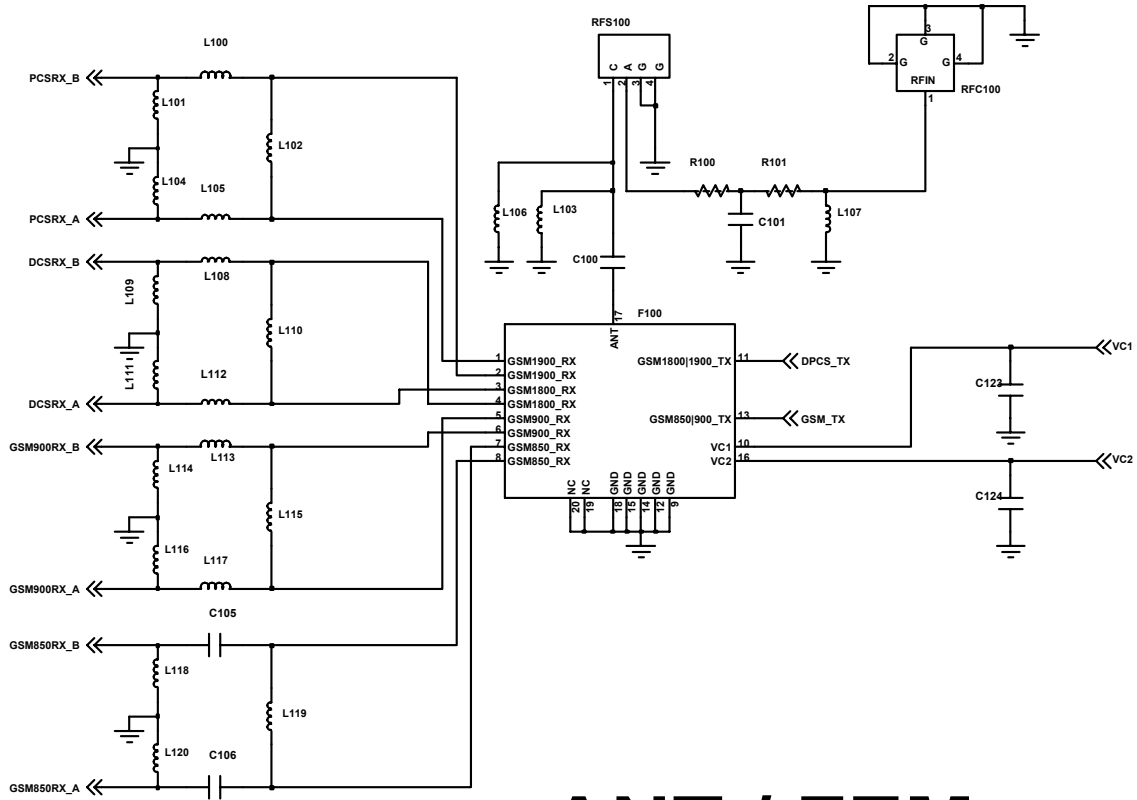


9-12. PCS Receiver

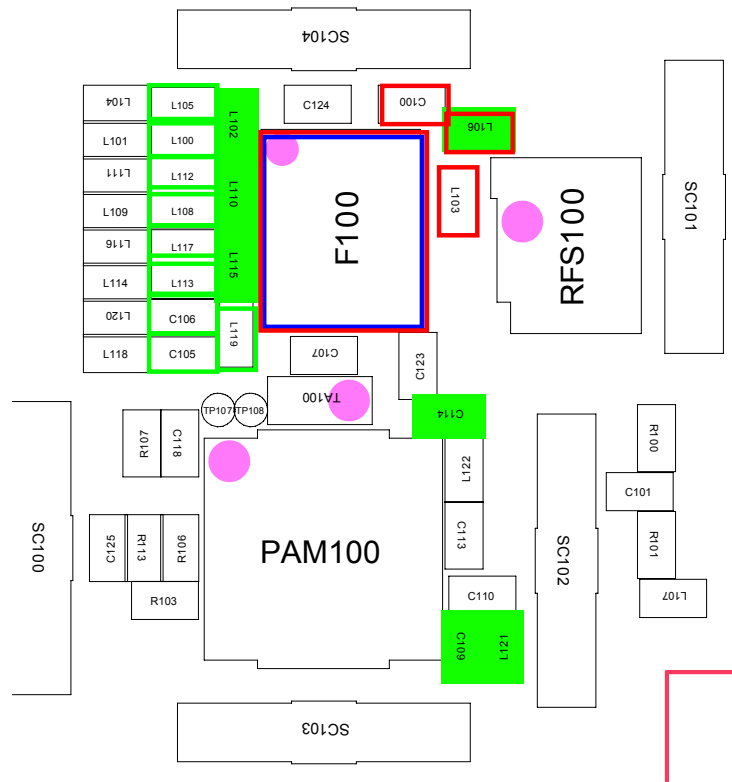


9-13. EDGE Receiver

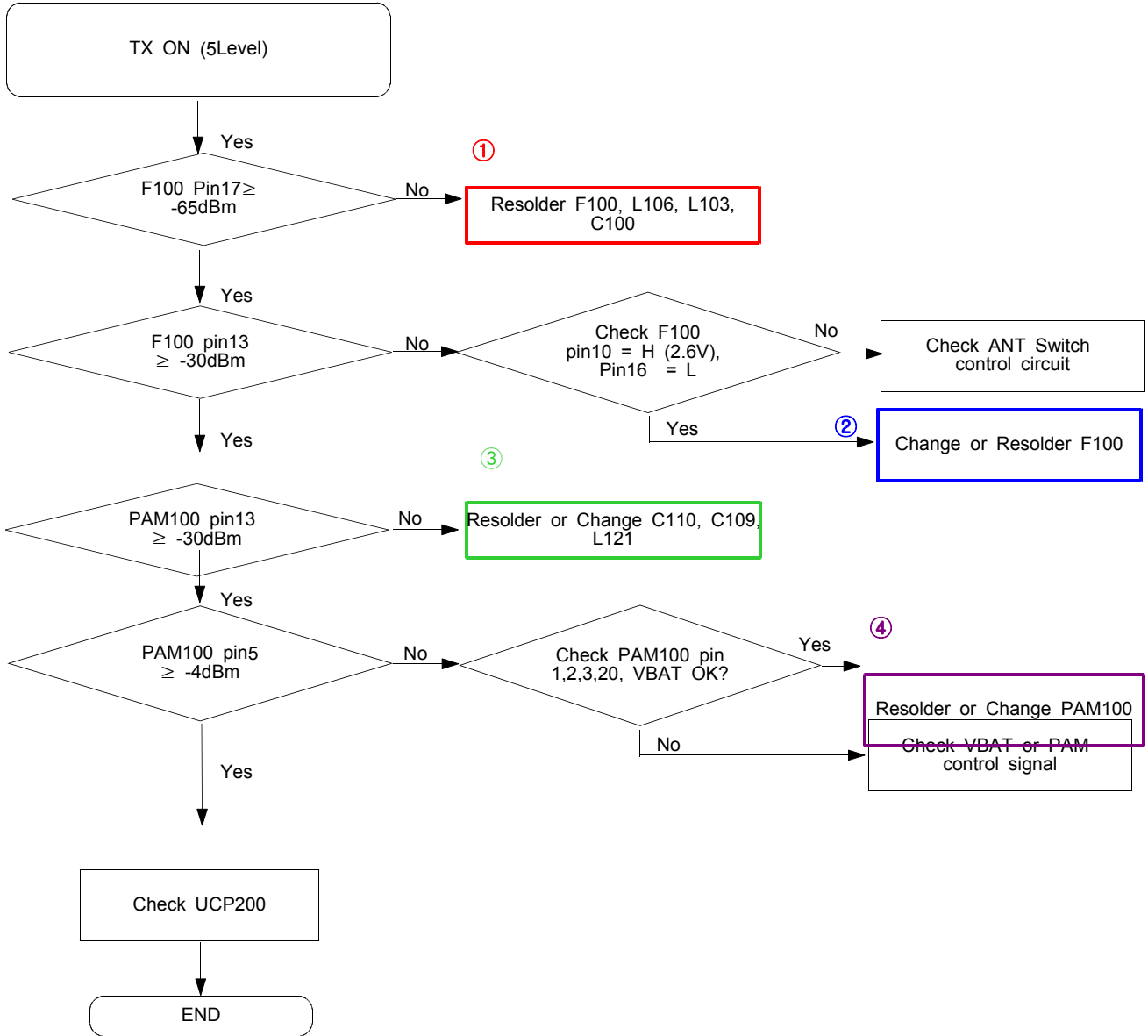




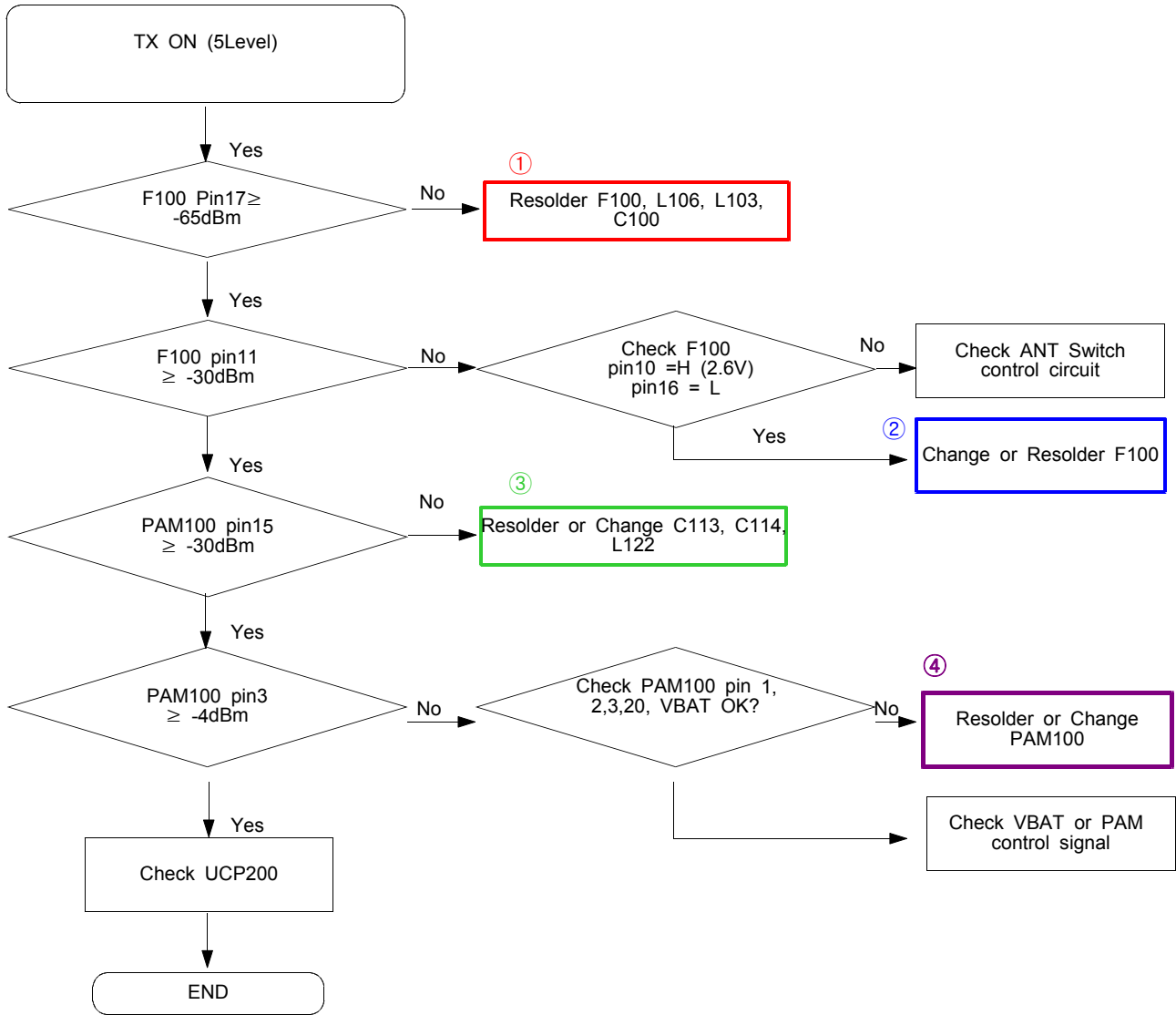
ANT / FEM



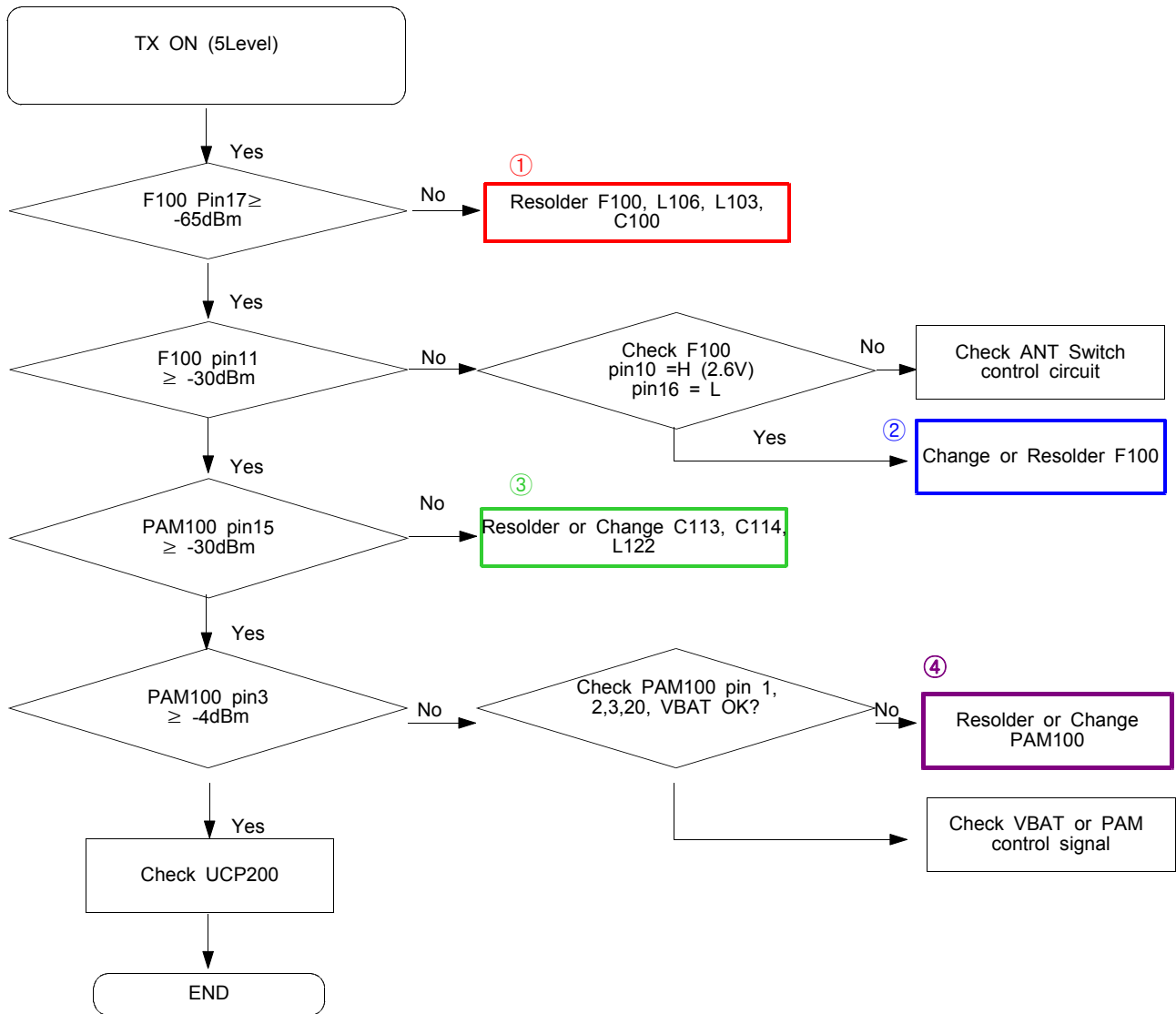
9-14. GSM Transmitter

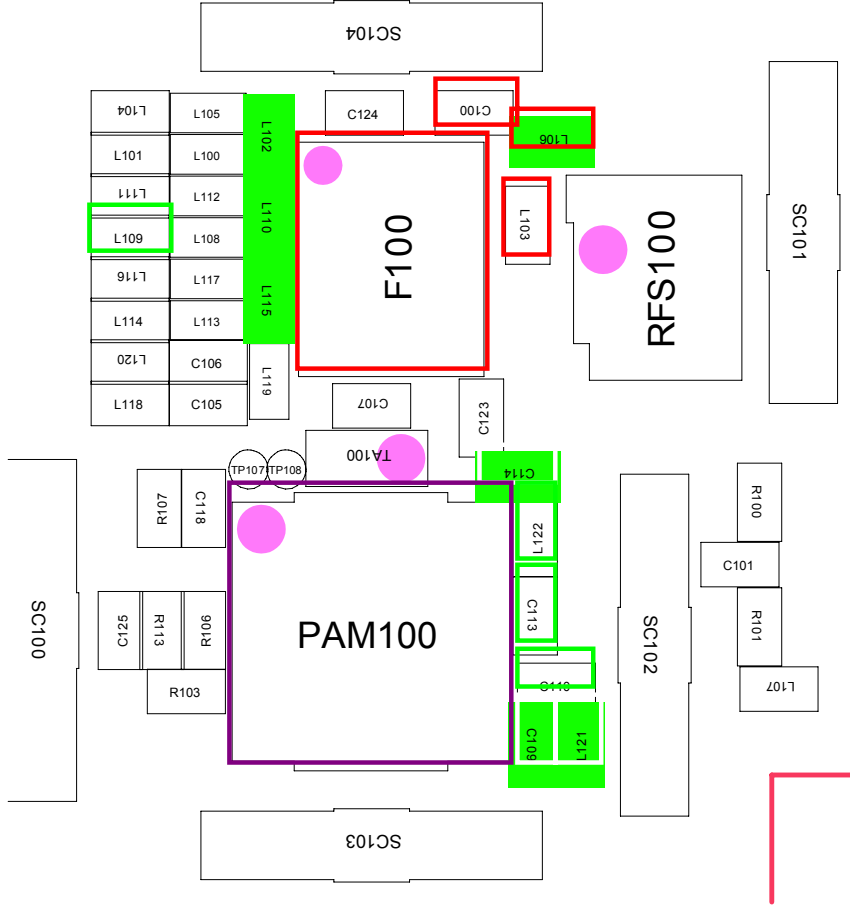
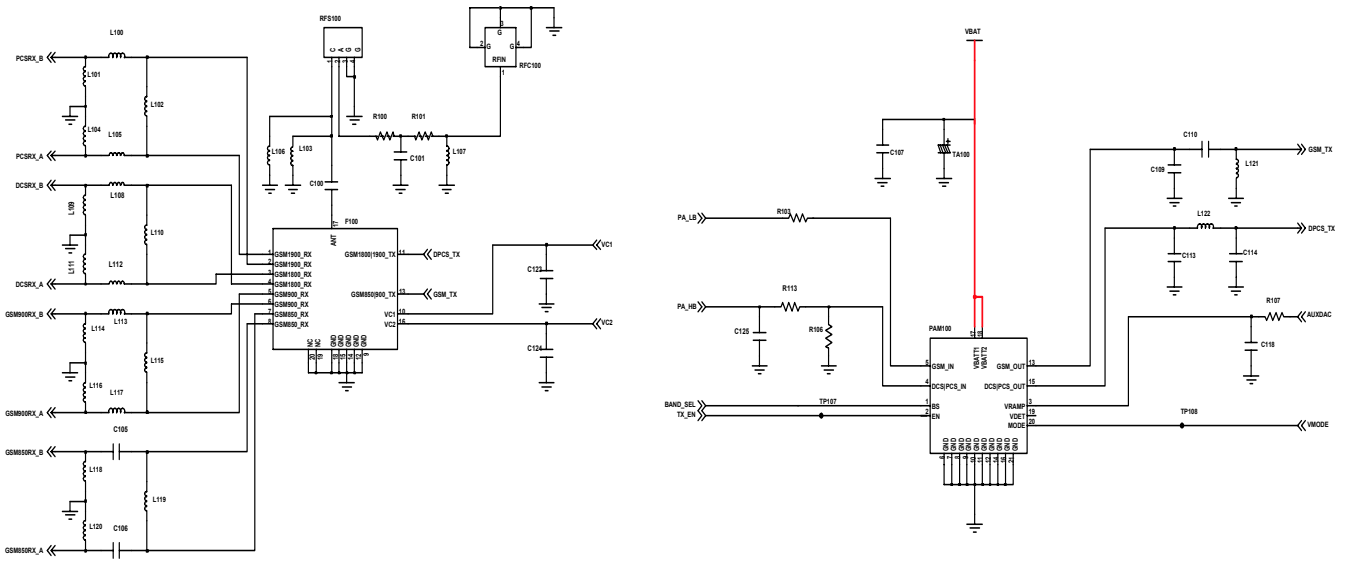


9-15. DCS Transmitter

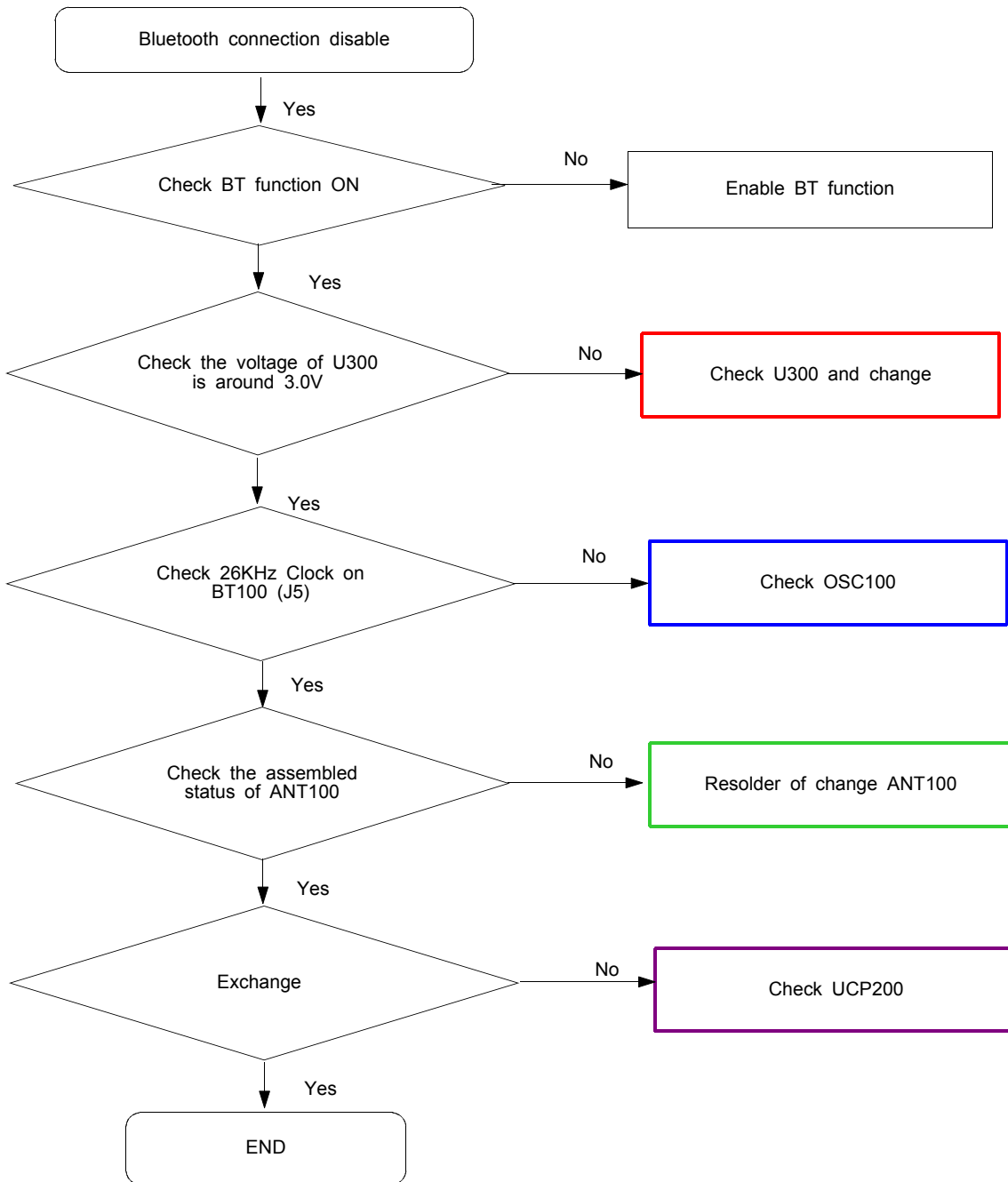


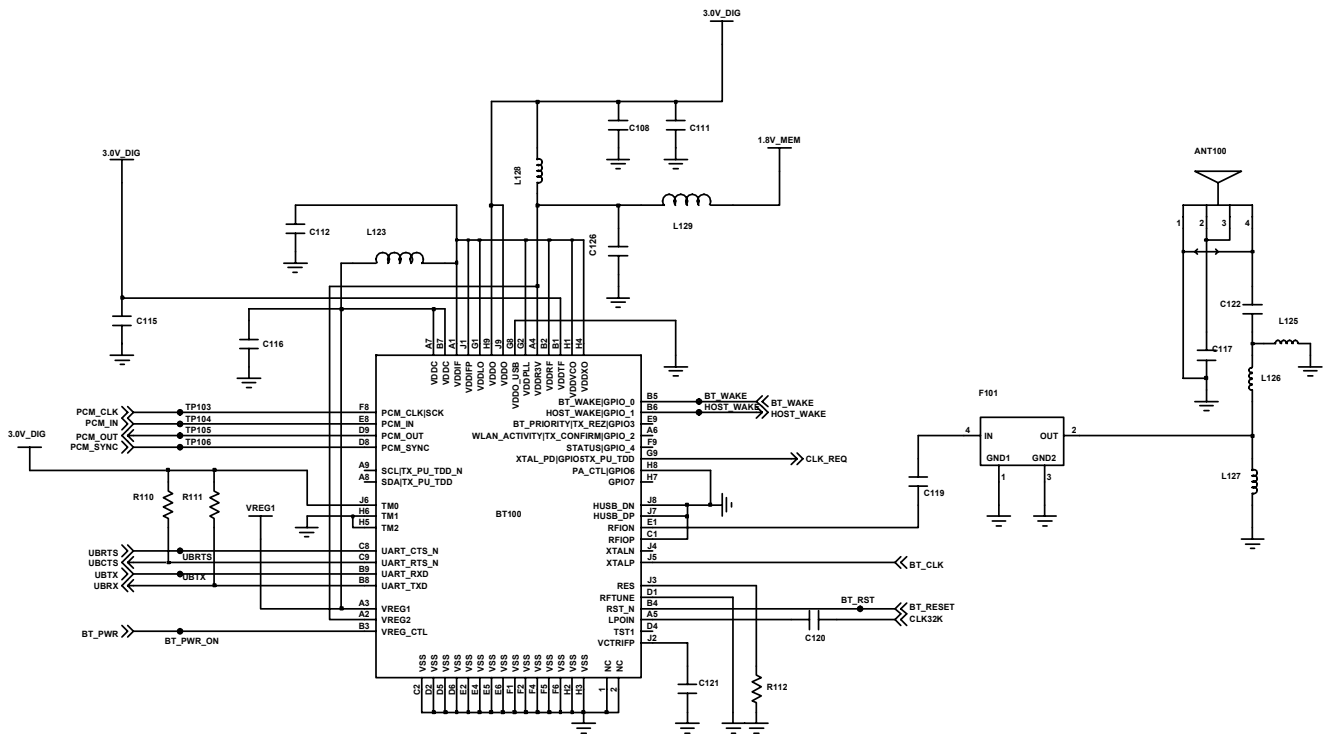
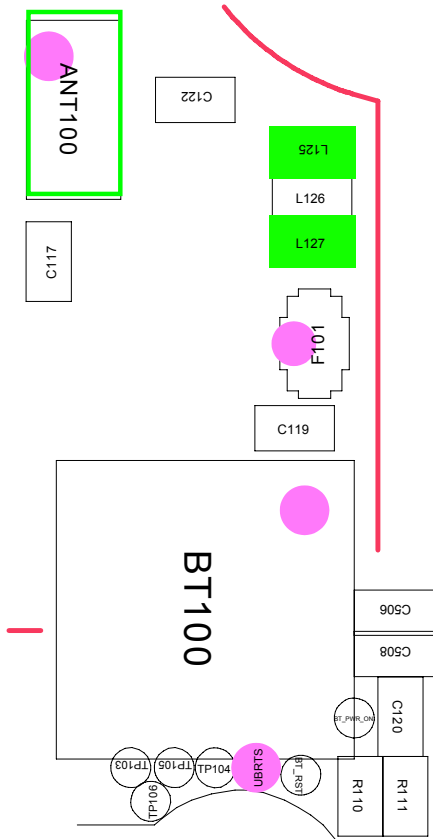
9-16 PCS Transmitter





9-18 Bluetooth part





7. Block Diagrams

1. BB & RF PART (ONE CHIP MODULE)

