

## 4. Array course control



**TEST JIG BOX (GH80-03308A)**



**TEST CABLE  
(0.4M:GH39-00886A/1.5M:GH68-00890A)**



**RF CABLE (GH39-00397A)**

## Software Downloading

### 4-1. Downloading Binary Files

- A boot file folder and five binary files for downloading SGH-U900

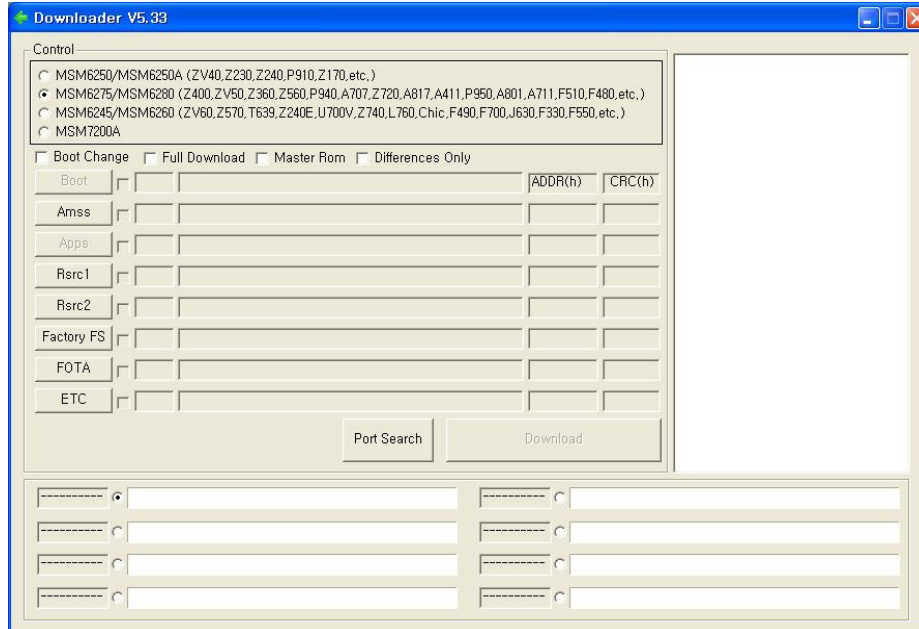
File	Comments
Boot folder	Initial booting files
amss_compressed.bin	Modem binary for common function
Rsrc_U900_Open_Europe_Common.rc1	Application files
Rsrc2_U900(Low/Mid).rc2	Power on/off animation files
FactoryFs_U900_Open_Europe_Common.ffs	Default file system for initial production

### 4-2. Pre-requisite for Downloading

- Downloader Program([Multiloader V5.33.exe](#))
- SGH-U900 Mobile Phone
- Data Cable
- Binary files

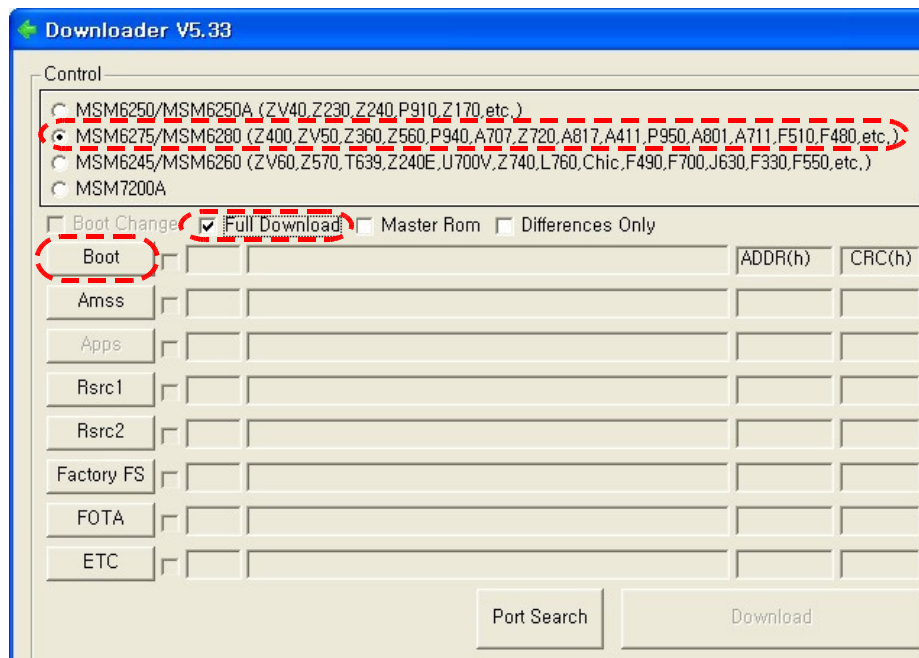
### 4-3. S/W Downloader Program

1. Load the binary download program by executing the "**Multiloader V5.33.exe**".

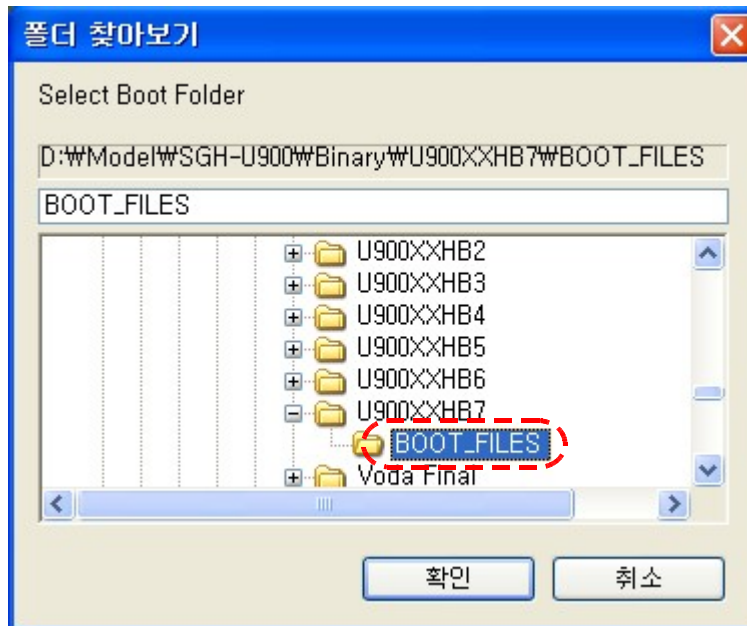


[Program main window]

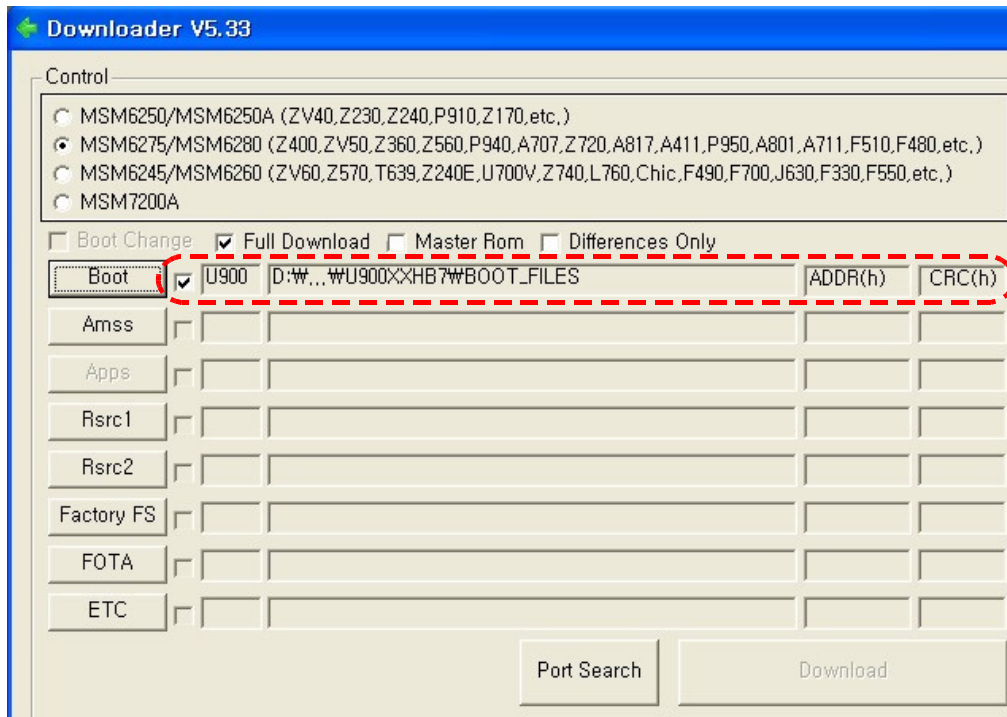
2. Click "**MSM6275/MSM6280**" to select baseband chip version of SGH-U900. Click "**Full Download**" to download binary files.



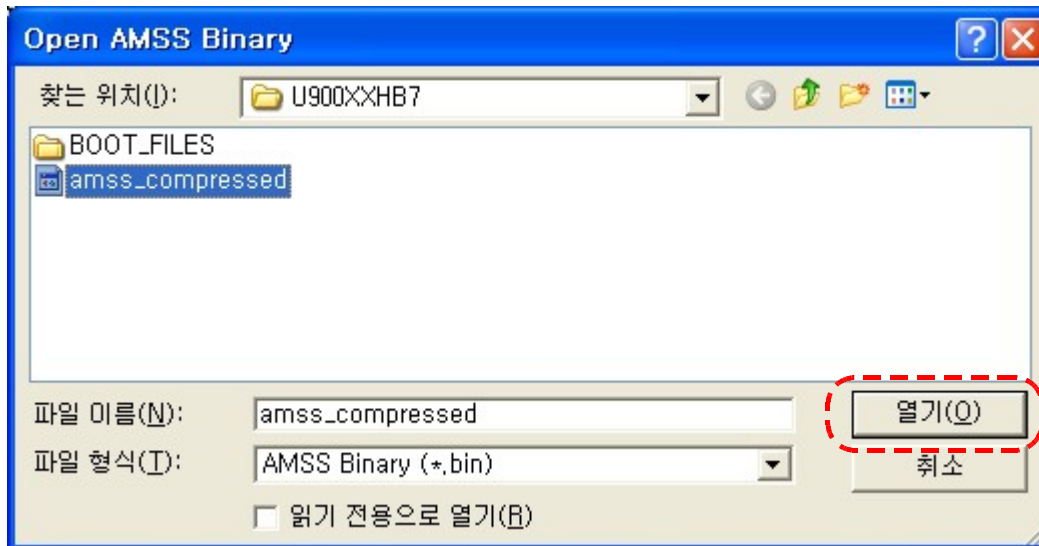
- 3. Click Boot button to load boot folder.  
Select binary folder and boot folder(**BOOT\_FILES**).  
Click "**확인(OK)**".



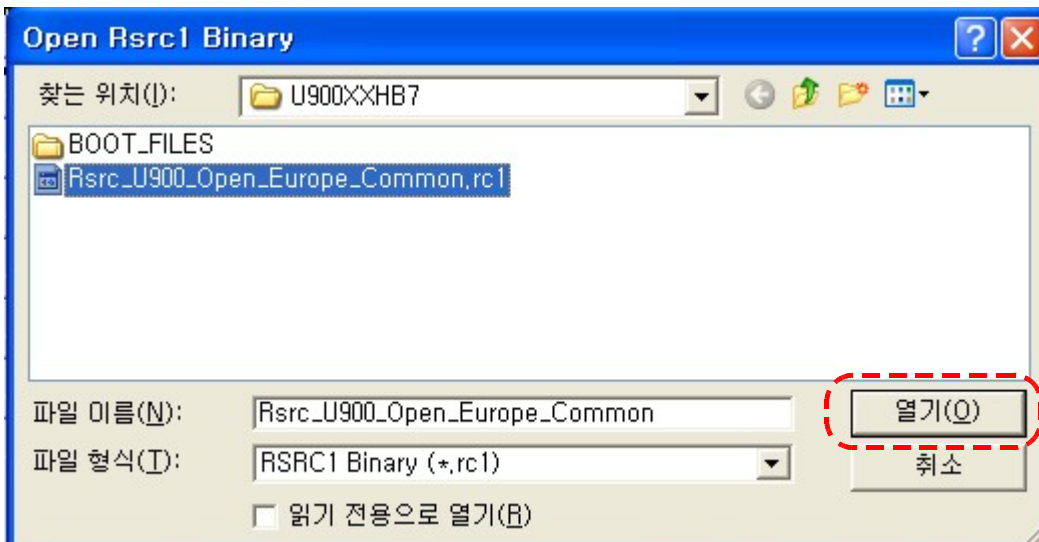
If the previous processes were successful, you can find **the condition** as below.



4. Click **AMSS** button to load "**amss\_compressed.bin**" file.  
Select "**amss\_compressed.bin**" file and click "**열기(OPEN)**"



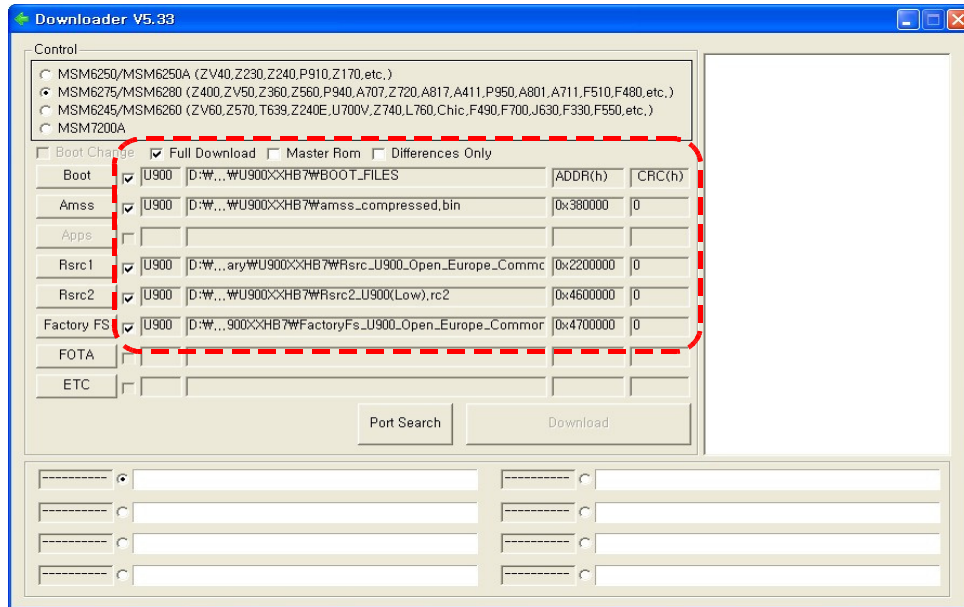
- Click **Rsrc1** button to load "**Rsrc\_U900\_Open\_Europe\_Common.rc1**" file.  
Select "**Rsrc\_U900\_Open\_Europe\_Common.rc1**" file and click "**열기(OPEN)**"



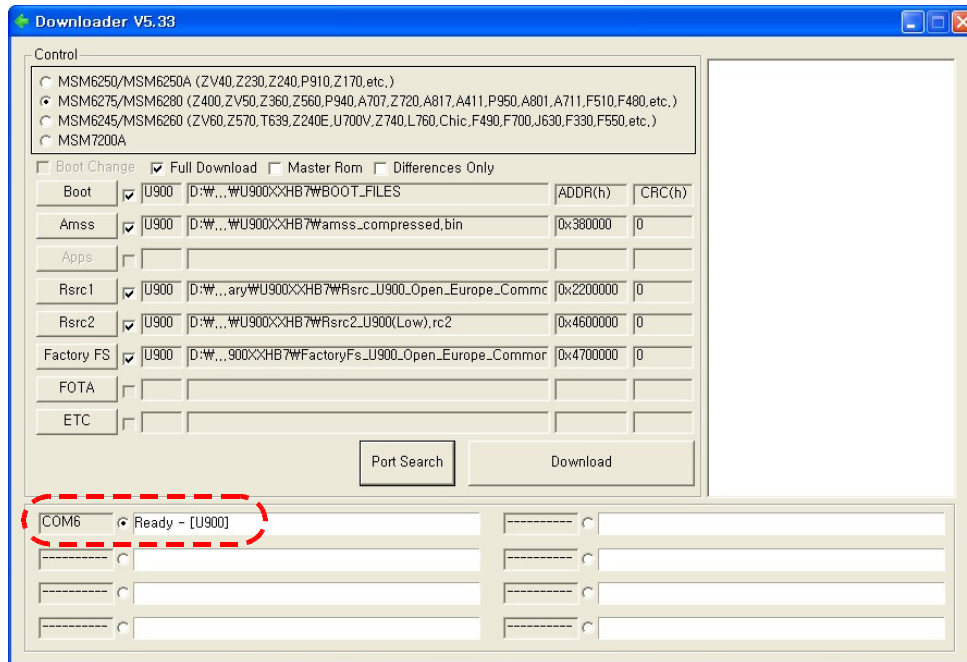
- Click **Rsrc2** button to load "**Rsrc2\_U900(Low).rc2**" file.  
Select "**Rsrc2\_U900(Low).rc2**" file and click "**열기(OPEN)**"

- Click **Factory FS** button to load "**FactoryFs\_U900\_Open\_Europe\_Common.ffs**" file.  
Select "**FactoryFs\_U900\_Open\_Europe\_Common.ffs**" file and click "**열기(OPEN)**"

5. If 3 and 4 processes were successful, you can find **the condition** as below. All files which compose the binary file are loaded. Don't need to click **FOTA** and **ETC**. Two buttons are not necessary.



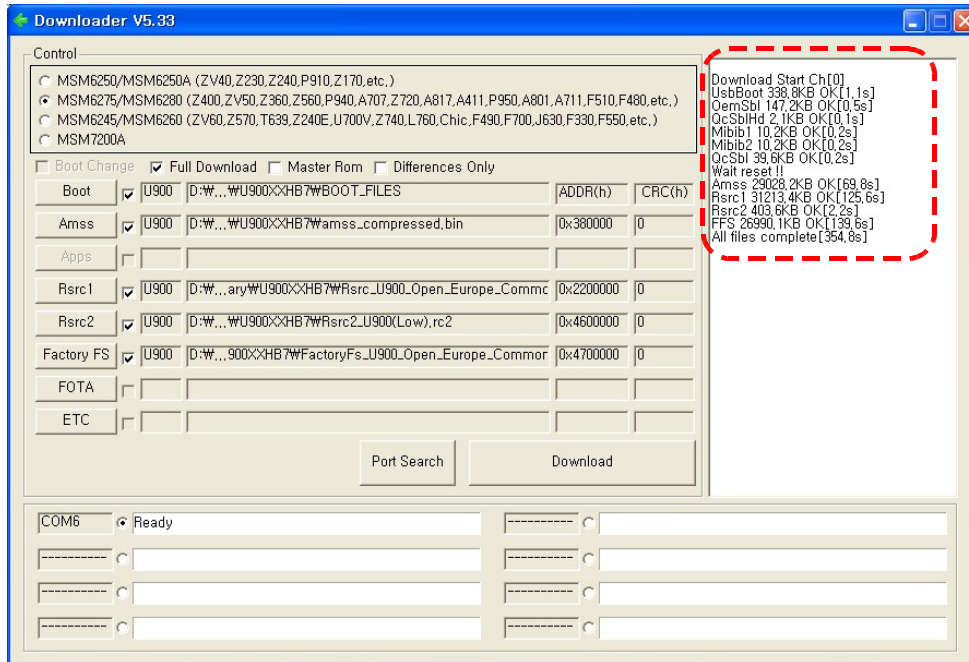
6. Connect **SGH-U900** mobile phone to computer via data cable. And click "**Port Search**" button to examine the connection condition. If the connection condition were successful, you can find the message below. **Eight** connections are possible at the same time.



7. If all connections are ready, click "Download" to start downloading.



Process success message is "All is complete[XXX.Xs]".



### 8. Recommendations

Don't touch the mobile phone while downloading to prevent disconnecting. Disconnection while downloading is critical to phone condition. Main PBA would be damaged by disconnection while downloading.

If all files are downloaded, it is recommended to do full reset.

Full reset : \*2767\*3855#