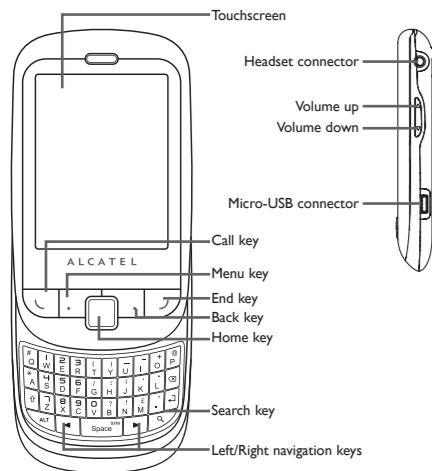


# Your mobile .....

## 1.1 Keys and connectors



Prolonged exposure to music at full volume on the music player may damage the listener's hearing. Set your phone volume safely. Use only headphones recommended by TCT Mobile Limited and its affiliates.

OT-980  
ALCATEL  
mobile phones

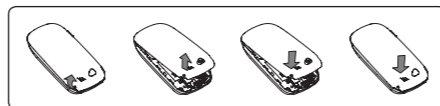
English - CJB3170ALAAB

- Pick up/Send a call
- Enter Call Log
- Return to ongoing call screen if the user navigates to other applications during call.
- On Home screen, press to quick access to **Settings** menu or Notification panel; to launch quick search; to customize your Home screen by adding applications or changing wallpaper.
- On other screens, press to view options list.
- Short press: Return to the Home screen or back to the central Home screen if it is extended.
- Long press: Enter the recently used applications list.
- Go back to the previous menu or screen.
- Short press: End a call
- Lock the screen
- Long press: When phone is off, power on the phone. When phone is on, enter Phone options: Silent mode, Airplane mode, Power off.
- Press to adjust the Volume (in call/media playing mode)
- Open Search bar for searching within an application, the phone or web.
- Press to go left/right
- Press to go up/down

## 1.2 Getting started

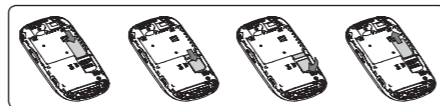
### 1.2.1 Set-up

#### Removing or installing the back cover



#### Inserting or removing the SIM card

You must insert your SIM card to make phone calls. Please power off your phone and remove battery before inserting or removing the SIM card.



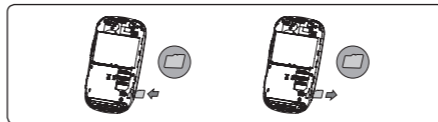
Place the SIM card with the chip facing downwards and slide it into its housing. Make sure that it is correctly inserted. To remove the card, press and slide it out.

#### Installing or removing the battery



- Insert and click the battery into place, then close the phone cover.
- Unclip the cover, then remove the battery.

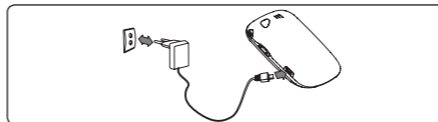
#### Installing and removing the memory card (MicroSD card)



Insert the MicroSD card with golden contact facing downwards into the slot until it is locked. Gently push the memory card until it is unlocked.

To remove the microSD card while the phone is on, you must unmount the storage card from the phone first, to prevent corrupting or damaging the storage card.

#### Charging the battery



### 1.2.2 Power on your phone

Hold down the **End** key until the phone powers on.

#### Set up your phone for the first time

The first time you power on the phone, you are required to touch the Android logo to begin and then sign into your Google account to synchronize email, contacts, calendar and other Google applications.

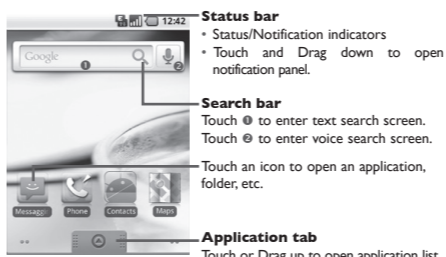
In power on screen without SIM card inserted, you can also connect to a Wi-Fi network to sign into your Google account and to use some features.

### 1.2.3 Power off your phone

Hold down the **End** key from the Home screen until the phone options appear, select **Power off**.

## 1.3 Home screen

You can bring all the items (applications, shortcuts, folders and widgets) you love or use most frequently to your home screen for quick access. Press **Home** key to switch to Home screen.



- Status bar**
  - Status/Notification indicators
  - Touch and Drag down to open notification panel.
- Search bar**
  - Touch to enter text search screen.
  - Touch to enter voice search screen.
  - Touch an icon to open an application, folder, etc.
- Application tab**
  - Touch or Drag up to open application list.

Home screen is provided in an extended format to allow more space for adding applications, shortcuts etc. Slide the Home screen horizontally left and right to get a complete view of the Home screen. Small dots at the lower left and right of the screen indicate which screen you are viewing.

### 1.3.1 Using the touchscreen

#### Touch

To access an application, touch it with your finger.

#### Touch and Hold

To enter the available options for an item, touch and hold the item. For example, select a contact in Directory, touch and hold this contact, an option list will then appear on screen.

#### Drag

Place your finger on the screen to drag an object to another location.

#### Slide/Swipe

Slide the screen to scroll up and down the applications, images, web pages... at your convenience.

#### Flick

Similar to swiping, but flicking makes it move quicker.

#### Rotate

Automatically change the screen orientation from portrait to landscape by turning the phone sideways to have a better screen view.

### 1.3.2 Status bar

From status bar you can view both phone status (to the right side) and notification info (to the left side). When the status bar is full, icon will appear, touch to display hidden icons.

#### Status icons

	GPRS connected		Speakerphone is on
	GPRS in use		Roaming
	EDGE connected		No signal
	EDGE in use		No SIM card installed
	3G connected		Vibrate mode
	3G in use		Ringer is silenced
	HSPA (3G+) connected		Phone microphone is mute
	HSPA (3G+) in use		Battery is very low

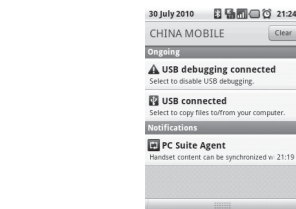
	Connected to a Wi-Fi network		Battery is low
	Bluetooth is on		Battery is partially drained
	Connected to a Bluetooth device		Battery is fully full
	Airplane mode		Battery is charging
	Alarm is set		GPS is on
	Signal strength		Receiving location data from GPS
	Headset connected		

#### Notification icons

	New Gmail message		More notifications are hidden
	New text or multimedia message		Call in progress (green)
	Problem with text or multimedia message delivery		Call in progress using Bluetooth headset (blue)
	New Google Talk message		Missed call
	New voicemail		Call on hold
	Upcoming event		Call forwarding is on
	Data is synchronizing		Uploading data
	Problem with sign-in or synchronization		Downloading data
	microSD card is full		Download finished
	An open Wi-Fi network is available		Connected to VPN
	Phone is connected via USB cable		Disconnected from VPN
	Song is playing		System update available

### Notification panel

Touch and drag down the Status bar or press **Menu** key and touch **Notifications** to open the notification panel. Touch and drag up to close it. From Notification panel, you can open items and other reminders indicated by notification icons or view wireless service information.



Touch **Clear** to clear all event-based notifications (other ongoing notifications will remain).

### 1.3.3 Search bar

The phone provides a Search function which can be used to locate information within applications, the phone or the web.

### 1.3.4 Lock/Unlock your screen

To protect your phone and privacy, you can lock the phone screen by creating a variety of patterns.

### 1.3.5 Personalize your home screen

**Add**  
Touch and hold an empty area or press **Menu** key and touch **Add** on the Home screen, you can add shortcuts, widgets or folders to the Home screen.

### Reposition

Touch and hold the item to be repositioned to activate the Move mode, drag the item to desired position, then release. Hold the icon on the left or right edge of the screen to drag the item to another Home screen page.

### Remove

Touch and hold the item to be removed to activate the Move mode, drag the item to the top of the Application tab, which will then turn red, and release.

### Wallpaper customization

Touch and hold an empty area or press **Menu** key and touch **Wallpaper** on the Home screen to customize wallpaper.

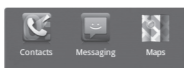
### 1.3.6 Application tab

Touch or drag up the from Home screen to enter applications list.

To close it, touch or drag down.

### Consult recently-used applications

To consult recently-used applications, you can press and hold the **Home** key from Home screen. Touch an icon in the window to open the related application.



### 1.3.7 Volume adjustment

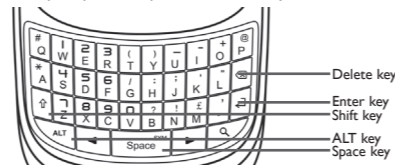
You can set ringer, media and phone ringtone volume to your preference by **Volume up/down** key, or **Settings** menu.

## 2 Text input .....

Your phone is equipped with two kinds of keyboard: Hardware Keyboard and Onscreen Keyboard.

### 2.1 Using Hardware Keyboard

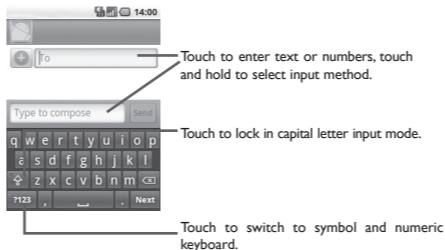
Slide up the phone to open the Hardware Keyboard.



- Press once: Input a capitalized character
- Shift+Space: to select input method
- Press twice: Lock the keyboard in capital letter input mode.
- Press once: Input a top-half character.
- Press twice: Lock the keyboard in top-half key input mode.
- Enter a space
- ALT+Space: to enter symbol table
- Confirm an option
- Enter the next line
- Delete a word or character

### 2.2 Using Onscreen Keyboard

Onscreen keyboard will display automatically when a program requires entering text or numbers.



#### Onscreen keyboard settings

Press **Menu** key from Home screen, select **Settings**\Language & Keyboard settings\Android keyboard, a series of settings are available for your selection.

#### Adjust the onscreen keyboard orientation

Turn the phone sideways or upright to adjust the onscreen keyboard orientation. You can also adjust it by settings (Press **Menu** key on Home screen)\Settings\Sound & display).

### 2.3 Text editing

You can edit the text you have entered.

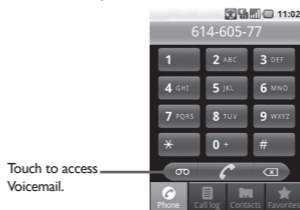
- Touch and hold text you have entered
- An option list pops up
- Select the operation you need (**Select all**, **Select text**, **Cut all**, **Copy all**, etc.)

## 3 Phone call.....

### 3.1 Placing a call

User can easily launch a call using **Phone**. Enter this menu using one of the following two ways:

- Touch Application tab from Home screen and select **Phone**
- Press **Call** key, then select **Phone** tab.



Enter the desired number from keyboard directly or select a contact from **Contacts**, **Call log** or **Favorites** by touching tabs, then press **Call** key or touch to place the call. The number you entered can be saved to **Contacts** by pressing **Menu** key and touching **Add to contacts**. If you make a mistake, you can delete the incorrect digits by touching .

To hang up a call, press **End** key.

### 3.2 Answering or rejecting a call



### 3.2 Answering or rejecting a call



### 4.2 Importing and exporting contacts

From Contacts screen, press **Menu** key to open contact list option menu, touch **Import/Export**, then select **Import from SIM**, **Import from MicroSD card** or **Export to SD card**.

To import/export a single contact, touch the contact your want to import/export, then **Done**.

To import/export all contacts, press **Menu** key, then touch **Import all/Export all**.

### 4.3 Synchronizing contacts in multiple accounts

Contacts, data or other information can be synchronized from multiple accounts, depending on the applications installed on your phone.

## 5 Messaging .....

You can create, edit and receive SMS and MMS with this mobile phone. To access this feature, touch Application tab from Home screen, then select **Messaging**.

All messages you receive or send out can only be saved in phone memory. To consult messages stored in SIM card, press **Menu** key from Messaging screen, then touch **Settings**\Manage SIM card message.

### 5.1 Create message

On message list screen, touch **New message** to create text/multimedia messages.

#### Sending a text message

Enter mobile phone number of the recipient on **To** bar, touch **Type to compose** bar to enter the text of the message. When finished, touch **Send** to send the text message.

#### Sending a multimedia message

MMS enables you to send video clips, images, photos, animations, slides and sounds to other compatible mobiles and e-mail addresses.

An SMS will be converted to MMS automatically when media files (image, video, audio, slides, etc.) are attached or Subject or email addresses added.

## 6 Google applications' & Other applications'.....

With this phone, some build-in Google applications and other third party applications are available for your convenience.

You can communicate with your friends at any time when they are connected to the service; you can exchange messages or emails with your friends effectively without staying close to your computer; you can track your current location, view traffic situations, get to know directions to your destination and search locations of your friends or any places of interest you can download more applications from websites, etc.

For more information about these applications, please check user manual in phone (**Settings\About phone\User manual**)<sup>2</sup> or online: www.alcatel-mobilephones.com.

## 7 Getting connected.....

To connect to the internet with this phone, you can use GPRS/EDGE/3G networks or Wi-Fi.

#### 7.1 GPRS/EDGE/3G

For the first time you turn on your phone with SIM card inserted, it will automatically configure network service: GPRS, EDGE or 3G.

To check the network connection you are using, press **Menu** key on Home screen, then touch **Settings\Wireless & networks\Mobile networks\Network operators** or **Access Point Names**.

#### 7.2 Wi-Fi

Wi-Fi can be used on phone even without a SIM card inserted.

To use Wi-Fi on your phone, press **Menu** key on Home screen, touch **Settings\Wireless & networks**, select Wi-Fi check box to turn it on. Phone will search for available wireless networks.

Touch **Wi-Fi settings** to set up and manage wireless access points of Wi-Fi network service.

#### 7.3 Connecting to a computer via USB

With the USB cable, you can transfer media files and other files between your phone’s MicroSD card and the computer.

## 8 Making the most of your phone .....

PC suite is provided on our website: www.alcatel-mobilephones.com.You can also download software upgrade for free from the website.

<sup>1</sup>	Application availability depends on country and operator.	
<sup>2</sup>	User manual availability in phone depends on your country and operator.	15

## General information.....

- Internet address:** www.alcatel-mobilephones.com
- Hot Line Number:** see “TCT Mobile Services” leaflet or go to our website.

On our website, you will find our FAQ (Frequently Asked Questions) section. You can also contact us by e-mail to ask any questions you may have.

An electronic version of this user guide is available in English and other languages according to availability on our server:

**www.alcatel-mobilephones.com**

Your telephone is a transceiver that operates on GSM/GPRS/EDGE in quad-band (850/900/1800/1900 MHz) or UMTS in dual-band (900/2100 MHz).

## CE 588

This equipment is in compliance with the essential requirements and other relevant provisions of Directive 1999/5/EC.The entire copy of the Declaration of Conformity for your telephone can be obtained through our website: www.alcatel-mobilephones.com.

#### Protection against theft<sup>5</sup>

Your telephone is identified by an IMEI (phone serial number) shown on the packaging label and in the phone’s memory.We recommend that you note the number the first time you use your telephone by entering \* # 0 6 # and keep it in a safe place. It may be requested by the police or your operator if your telephone is stolen.This number allows your mobile telephone to be blocked preventing a third person from using it, even with a different SIM card.

#### Disclaimer

There may be certain differences between the user manual description and the phone’s operation, depending on the software release of your telephone or specific operator services.

<sup>[1]</sup> Contact your network operator to check service availability.

#### 7.1 Safety and use .....

Do not allow your phone to be exposed to adverse weather or environmental conditions (moisture, humidity, rain, infiltration of liquids, dust, sea air, etc).

The manufacturer’s recommended operating temperature range is -10°C to +55°C. At over 55°C the legibility of the phone’s display may be impaired, though this is temporary and not serious.

Emergency call numbers may not be reachable on all cellular networks. You should never rely only on your phone for emergency calls.

Do not open, dismantle or attempt to repair your mobile phone yourself.

Do not drop, throw or bend your mobile phone.

Do not paint it.

Use only batteries, battery chargers, and accessories which are recommended by TCT Mobile Limited and its affiliates and are compatible with your phone model.TCT Mobile Limited and its affiliates disclaim any liability for damage caused by the use of other chargers or batteries.

Remember to make back-up copies or keep a written record of all important information stored in your phone.

Some people may suffer epileptic seizures or blackouts when exposed to flashing lights, or when playing video games.These seizures or blackouts may occur even if a person never had a previous seizure or blackout.If you have experienced seizures or blackouts, or if you have a family history of such occurrences, please consult your doctor before playing video games on your phone or enabling a flashing-lights feature on your phone.


Parents should monitor their children’s use of video games or other features that incorporate flashing lights on the phones.All persons should discontinue use and consult a doctor if any of the following symptoms occur: convulsion, eye or muscle twitching, loss of awareness, involuntary movements, or disorientation.To limit the likelihood of such symptoms, please take the following safety precautions:

- Do not play or use a flashing-lights feature if you are tired or need sleep.
- Take a minimum of a 15-minute break hourly.
- Play in a room in which all lights are on.

- Play at the farthest distance possible from the screen.
- If your hands, wrists, or arms become tired or sore while playing, stop and rest for several hours before playing again.

- If you continue to have sore hands, wrists, or arms during or after playing, stop the game and see a doctor.

When you play games on your phone, you may experience occasional discomfort in your hands, arms, shoulders, neck, or other parts of your body. Follow the instructions to avoid problems such as tendinitis, carpal tunnel syndrome, or other musculoskeletal disorders.

 Prolonged exposure to music at full volume on the music player may damage the listener’s hearing.

When replacing the cover please note that your phone may contain substances that could create an allergic reaction.

Always handle your phone with care and keep it in a clean and dust-free place.

	17	
--	----	--

This warranty shall not apply to defects to your phone and/or accessory due to (without any limitation):

- Non-compliance with the instructions for use or installation, or with technical and safety standards applicable in the geographical area where your phone is used,
- Connection to any equipment not supplied or not recommended by TCT Mobile Limited,
- Modification or repair performed by individuals not authorised by TCT Mobile Limited or its affiliates or your vendor,
- Inclement weather, lightning, fire, humidity, infiltration of liquids or foods, chemical products, download of files, crash, high voltage, corrosion, oxidation...

Your phone will not be repaired in case labels or serial numbers (IMEI) have been removed or altered.

There are no express warranties, whether written, oral or implied, other than this printed limited warranty or the mandatory warranty provided by your jurisdiction.

In no event shall TCT Mobile Limited or any of its affiliates be liable for incidental or consequential damages of any nature whatsoever, including but not limited commercial loss, to the full extent those damages can be disclaimed by law.

Some countries/states do not allow the exclusion or limitation of incidental or consequential damages, or limitation of the duration of implied warranties, so the preceding limitations or exclusions may not apply to you.

<p>ALCATEL is a trademark of Alcatel-Lucent and is used under license by TCT Mobile Limited.</p> <p>© Copyright 2010 TCT Mobile Limited All rights reserved</p> <p>TCT Mobile Limited reserves the right to alter material or technical specification without prior notice.</p>
---

	24	
--	----	--

Do not allow your phone to be exposed to adverse weather or environmental conditions (moisture, humidity, rain, infiltration of liquids, dust, sea air, etc). The manufacturer’s recommended operating temperature range is -10°C to +55°C. At over 55°C the legibility of the phone’s display may be impaired, though this is temporary and not serious.

Emergency call numbers may not be reachable on all cellular networks. You should never rely only on your phone for emergency calls.

Do not open, dismantle or attempt to repair your mobile phone yourself.

Use only batteries, battery chargers, and accessories which are recommended by TCT Mobile Limited and its affiliates and are compatible with your phone model.TCT Mobile Limited and its affiliates disclaim any liability for damage caused by the use of other chargers or batteries.

Remember to make back-up copies or keep a written record of all important information stored in your phone.

Some people may suffer epileptic seizures or blackouts when exposed to flashing lights, or when playing video games.These seizures or blackouts may occur even if a person never had a previous seizure or blackout.If you have experienced seizures or blackouts, or if you have a family history of such occurrences, please consult your doctor before playing video games on your phone or enabling a flashing-lights feature on your phone.

Parents should monitor their children’s use of video games or other features that incorporate flashing lights on the phones.All persons should discontinue use and consult a doctor if any of the following symptoms occur: convulsion, eye or muscle twitching, loss of awareness, involuntary movements, or disorientation.To limit the likelihood of such symptoms, please take the following safety precautions:

- Do not play or use a flashing-lights feature if you are tired or need sleep.
- Take a minimum of a 15-minute break hourly.


- Play in a room in which all lights are on.

- Play at the farthest distance possible from the screen.

- If your hands, wrists, or arms become tired or sore while playing, stop and rest for several hours before playing again.

- If you continue to have sore hands, wrists, or arms during or after playing, stop the game and see a doctor.


When you play games on your phone, you may experience occasional discomfort in your hands, arms, shoulders, neck, or other parts of your body. Follow the instructions to avoid problems such as tendinitis, carpal tunnel syndrome, or other musculoskeletal disorders.

 Prolonged exposure to music at full volume on the music player may damage the listener’s hearing.

Set your phone volume safely. Use only headphones recommended by TCT Mobile Limited and its affiliates.

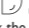
### Troubleshooting.....

Before contacting the aftersales department, you are advised to follow the instructions below:


- You are advised to switch off the phone from time to time to maintain optimal performance.
- You are advised to fully charge (  ) the battery for optimal operation.
- Avoid storing large amounts of data in your phone as this may affect the performance of your phone.

and carry out the following checks:

**My mobile phone can not switch on**

- Press  until the screen comes on
- Check the battery charge level
- Check the battery contacts, remove and reinstall your battery, then turn your phone back on

**My mobile phone has not responded for several minutes**

- Press the  key
- Remove the battery and re-insert it, then switch the phone back on

**My mobile phone turns off by itself**

- Check that your keypad is locked when you are not using your mobile phone
- Check the battery charge level

**My mobile phone will not charge properly**

- Make sure you are using an Alcatel battery and charger provided in the box
- Make sure your battery is inserted. It must be inserted before plugging in the charger
- Make sure that your battery is not completely discharged; the battery charge indicator can take several minutes
- Make sure charging is carried out under normal conditions (0°C +40°C)
- When abroad, check that the electrical current is compatible

• **PRIVACY:**

Please note that you must respect the laws and regulations in force in your jurisdiction or other jurisdiction(s) where you will use your mobile phone regarding taking photographs and recording sounds with your mobile telephone. Pursuant to such laws and regulations, it may be strictly forbidden to take photographs and/or to record the voices of other people or any of their personal attributes, and duplicate or distribute them, as this may be considered to be an invasion of privacy. It is the user’s sole responsibility to ensure that prior authorisation be obtained, if necessary, in order to record private or confidential conversations or take a photograph of another person; the manufacturer, the seller or vendor of your mobile phone (including the operator) disclaim any liability which may result from the improper use of the mobile phone.

• **BATTERY:**

Before removing the battery from your phone, please make sure that the phone is switched off.

Observe the following precautions for battery use:

- Do not attempt to open the battery (due to the risk of toxic fumes and burns).
- Do not puncture, disassemble or cause a short-circuit in a battery.
- Do not burn or dispose of a used battery in household rubbish or store it at temperatures above 60°C.

Batteries must be disposed of in accordance with locally applicable environmental regulations. Only use the battery for the purpose for which it was designed. Never use damaged batteries or those not recommended by TCT Mobile Limited and/or its affiliates.



This symbol on your telephone, the battery and the accessories means that these products must be taken to collection points at the end of their life:

- Municipal waste disposal centres with specific bins for these items of equipment
- Collection bins at points of sale.

They will then be recycled, preventing substances being disposed of in the environment, so that their components can be reused.

**In European Union countries:**

These collection points are accessible free of charge.

All products with this sign must be brought to these collection points.

**In non European Union jurisdictions:**

Items of equipment with this symbol are not to be thrown into ordinary bins if your jurisdiction or your region has suitable recycling and collection facilities; instead they are to be taken to collection points for them to be recycled.

**CAUTION: RISK OF EXPLOSION IF BATTERY IS REPLACED BY AN INCORRECT TYPE. DISPOSE OF USED BATTERIES ACCORDING TO THE INSTRUCTIONS.**

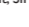
	18	
--	----	--

	19	
--	----	--

- My mobile phone can not connect to a network**
- Try connecting in another location
- Verify the network coverage with your operator
- Check with your operator that your SIM card is valid
- Try selecting the available network(s) manually
- Try connecting at a later time if the network is overloaded

- SIM card error**
- Make sure the SIM card has been correctly inserted
- Verify with your operator that your SIM card is 3V, 1.8V compatible; the old 5V SIM cards cannot be used
- Make sure the chip on your SIM card is not damaged or scratched

**Unable to make outgoing calls**

- Make sure you have dialled a valid number and press the  key
- For international calls, check the country and area codes
- Make sure your mobile phone is connected to a network, and that the network is not overloaded or unavailable

- Check your subscription status with your operator (credit, SIM card valid, etc.)

- Make sure you have not barred outgoing calls

**Unable to receive incoming calls**

- Make sure your mobile phone is switched on and connected to a network (check for overloaded or unavailable network)
- Check your subscription status with your operator (credit, SIM card valid, etc.)

- Make sure you have not forwarded incoming calls

**The caller’s name or number does not appear when a call is received**

- Check that you have subscribed to this service with your operator
- Your caller has concealed his/her number

**I cannot find my contacts**

- Make sure your SIM card is correctly inserted
- Import all contacts stored in SIM card to phone

• **CHARGERS:**

Mains powered chargers will operate within the temperature range of: 0°C to 40°C.

The chargers designed for your mobile phone meet with the standard for safety of information technology equipment and office equipment use. Due to different applicable electrical specifications, a charger you purchased in one jurisdiction may not work in another jurisdiction. They should be used for this purpose only.

• **RADIO WAVES:**

Proof of compliance with international standards (ICNIRP) or with European Directive 1999/5/EC (R&TTE) is required of all mobile phone models before they can be put on the market.The protection of the health and safety for the user and any other person is an essential requirement of these standards or this directive. THIS MOBILE PHONE COMPLIES WITH INTERNATIONAL AND EUROPEAN REQUIREMENTS REGARDING EXPOSURE TO RADIO WAVES. Your mobile phone is a radio transmitter/receiver. It was designed and manufactured to comply with the radiofrequency (RF) exposure thresholds recommended by international requirements (ICNIRP)<sup>3</sup> and by the Council of the European Union (Recommendation 1999/519/EC)<sup>4</sup>.

These limits are part of a set of requirements and establish authorised radiofrequency levels for the public. These limits were established by independent groups of experts on the basis of regular and detailed scientific assessments. They include a significant safety margin intended to ensure the safety of all, regardless of age or state of health. The exposure standard for mobile phones is determined by a measurement unit known as the Specific Absorption Rate or “SAR”.The SAR limit is set by international requirements or by the Council of the European Union at 2 watts/kilogram (W/kg) averaged over 10 grams of body tissue.The tests used to determine SAR levels were carried out on the basis of standard usage modes with the phones transmitting at their maximum power level over the entire range of frequency bands. Although the SAR was established at the highest certified level, the actual SAR level for the mobile phone during use is generally much lower than the maximum values. In fact, since mobile phones are designed to operate at many different power levels, they only use the minimum level of power required to provide a connection to the network. In theory, the closer you are to a base station antenna, the lower the power level required by the mobile phone. The highest tested SAR value for this mobile phone for use at the ear and compliance against the standard is 0.64 W/kg.While there may be differences between the SAR levels on various phones and at various positions, they all meet the relevant International guidelines and EU requirements for RF (radio-waves) exposure.

<sup>[1]</sup> The ICNIRP requirements are applicable in the following regions: Central America (except Mexico), South America, North and South Africa, Pacific Asia (except Korea), Australia.

<sup>[2]</sup> The European recommendation (1999/519/EC) is applicable in the following regions: Europe, Israel.

	20	
--	----	--

	21	
--	----	--

	22	
--	----	--

	23	
--	----	--

	24	
--	----	--

	25	
--	----	--

	26	
--	----	--

	27	
--	----	--

	28	
--	----	--

	29	
--	----	--

	30	
--	----	--

	31	
--	----	--

	32	
--	----	--

	33	
--	----	--

	34	
--	----	--

	35	
--	----	--

	36	
--	----	--

	37	
--	----	--

	38	
--	----	--

The World Health Organisation (WHO) considers that present scientific information does not indicate the need for any special precautions for use of mobile phones. If individuals are concerned, they might choose to limit their own or their children’s RF exposure by limiting the length of calls, or using “hands-free” devices to keep mobile phones away from the head and body (fact sheet n° 193).Additional information about electromagnetic fields and public health are available on the following site: http://www.who.int/peh-emf. Although no danger relating to the use of telephone was ever proved, the World Health Organisation advises as a precautionary measure to use your telephone with a good level of network reception as indicated on the telephone display (4 to 5 bars). It is also advised to keep the telephone, during communications, away from the belly of pregnant women and from the lower abdomen for teenagers.

Your telephone is equipped with a built-in antenna. For optimal operation, you should avoid touching it or degrading it.

As mobile devices offer a range of functions, they can be used in positions other than against your ear.In such circumstances the device will be compliant with the guidelines when used with headset or usb data cable.If you are using another accessory ensure that whatever product is used is free of any metal and that it positions the phone at least 2cm away from the body.

	39	
--	----	--

	40	
--	----	--

	41	
--	----	--

	42	
--	----	--

	43	
--	----	--

	44	
--	----	--

	45	
--	----	--

	46	
--	----	--

	47	
--	----	--

	48	
--	----	--

	49	
--	----	--

	50	
--	----	--

	51	
--	----	--

	52	
--	----	--

	53	
--	----	--

	54	
--	----	--

	55	
--	----	--

	56	
--	----	--

	57	
--	----	--

	58	
--	----	--

	59	
--	----	--

	60	
--	----	--

	61	
--	----	--

<sup>[1]</sup> The warranty period may vary depending on your country.

<sup>[2]</sup> The life of a rechargeable mobile phone battery in terms of conversation time standby time, and total service life, will depend on the conditions of use and network configuration. Batteries being considered expendable supplies, the specifications state that you should obtain optimal performance for your phone during the first six months after purchase and for approximately 200 more recharges.