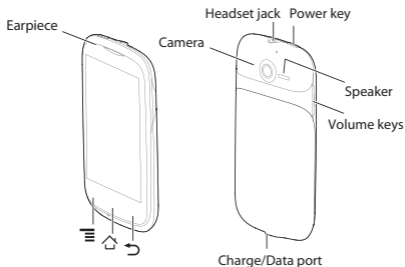


Quick Start Guide

Welcome to HUAWEI

Phone at a Glance

- ⓘ All the pictures in this guide are for your reference only. Your phone's actual display features may be different to those described here, depending on its software version.



Key Functions at Your Fingertips



- Press and hold to power on your mobile phone.
- Press and hold to open the **Phone options** menu.
- Press to lock the screen when your mobile phone is active.



- Touch to return to the previous screen or exit the application you are running.
- Touch to hide the keyboard.

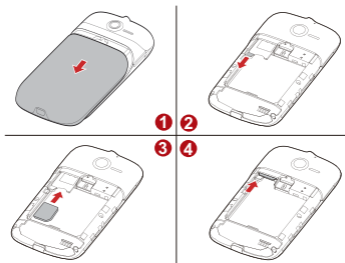


Touch to open the menu on an active screen.



- Touch to return to the Home screen.
 - Touch and hold to show the most recently used applications.
-

Installing a UIM Card



1. Remove the battery cover.
2. Pull out the UIM card holder.
3. Place the UIM card in the card slot.
4. Push the UIM card holder until it clicks into place.

Removing a UIM Card



1. Pull out the UIM card holder.
2. Lift the exposed end of the UIM card with your finger.

ⓘ Be gentle in order not to damage the UIM card.

3. Carefully remove the card.

(Optional) Installing the microSD Card

If you want to expand your phone memory, you can also insert a microSD card.



1. Remove the battery cover.
2. Insert the microSD card into the card slot as shown in the diagram.

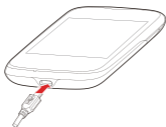
Installing the Battery




1. Angle the edge labeled **a** (with the contacts) into the bottom end of the battery compartment.
2. Push the edge labeled **b** into the compartment until the battery clicks firmly into place.

Charging the Battery

Before charging the battery, ensure that it has been properly installed on your phone.



1. Connect the USB cable that came with your mobile phone to the charger.
2. Connect the other end of the USB cable to your mobile phone.
Then, to start charging, plug the charger into an electrical outlet.

If you charge your mobile phone while it is powered on, the battery icon on the notification bar indicates the charging status. When the battery icon changes to , your mobile phone is fully charged.

Status Indicator

The color of the status indicator tells you the status of your mobile phone's battery.



Green: Fully charged (when connected to charger).

Orange: Charging in progress (when connected to charger).

Red: Battery low.



Touchscreen Actions

Using your finger on the touchscreen, you can operate your phone conveniently.

Touch & hold



Touch



Double touch



Rotate



Flick



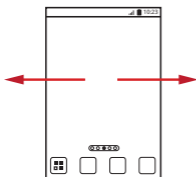
Drag



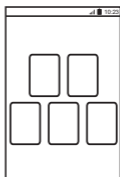
Home Screen


You can set up the Home screen according to your own preferences, for example by adding a shortcut or a widget to your Home screen, changing the wallpaper, or setting the number of Home screen extensions.

To return to the Home screen from any of its extensions, press .



Flick your finger left or right across the Home screen.

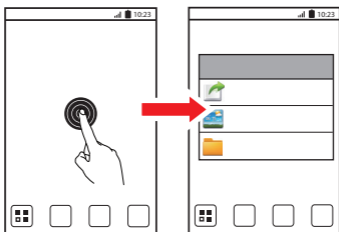


Touch  to view thumbnails of the Home screen and its extensions. Touch a thumbnail to open the screen.

When a new notification icon appears on the notification bar, place your finger on the notification bar and flick down to open the notification panel.

Adding a New Home Screen Item

1. Touch and hold a blank area on the Home screen until the **Add to home screen** menu is displayed.
2. Select an item to add it to the Home screen.



Removing a Home Screen Item


1. Touch and hold an item on the Home screen until the item expands and the mobile phone vibrates.
2. Without lifting your finger, drag the item to the trash can. When the item and the trash can turn red, the item is ready to be removed.
3. Release the item to remove it from the Home screen.

Importing Contacts from a UIM Card


1. In the contact list, touch **☰** > **Manage contacts**.
2. Touch **Copy from UIM card**.
3. Wait for the UIM card contents to be loaded. Select the contacts you want to import or touch **Select All** to select all contacts.
4. Touch **Copy**.

5. If you have more than one account on your phone, touch the account into which you want to import the contacts.


Adding a Contact



1. In the contact list, touch  > **Create contact**.
2. If you have more than one account with contacts, touch the account to which you want to add the contact.
3. Enter the contact's name, and then add detailed information such as phone number and address.
4. When you are finished, touch **Save** to save the contact information.

Making a Call with the Dialer Application

On the home screen, touch  to open the **Dialer**. Your mobile phone supports the SmartDial function, that is, when you touch numbers on the dialer, the phone automatically searches among your contacts and lists the matching results ordered according to the accuracy of the match. If no contacts match the information entered, the phone will not display any result.

Creating and Sending a Multimedia Message

On the home screen, touch  to open the **Messaging**. You can use multimedia messages to make everyday communications very special. You can record a message and send it as an audio file, sing 'Happy Birthday' and send it to friend, or send a slideshow of photographs of a special event. The possibilities are endless.

1. Enter a phone number in the **To** field, or touch  to select a contact from **Contacts** or **Groups**.
2. Touch the composition text box to start entering your message.
3. When the message is ready to be sent, touch  .



DTS Envelo™

DTS Envelo provides a vivid surround sound effect.


Your phone allows you to use the DTS function with a headset plugged in. To turn the DTS function on or off, from the Home screen, select **Settings > Sound > DTS mode**.

 By default, the DTS function is enabled.

Connecting Internet

Get online using your phone's Wi-Fi to save your money.

Turning On Wi-Fi

1. Touch  > **Settings**.
2. Touch **Wireless & networks**, and then select the **Wi-Fi** check box to turn on Wi-Fi.

Opening the Browser

Touch  > **Browser** to open the home page.


-  When known or open Wi-Fi networks and mobile data networks are available at the same time, your phone will preferably select a Wi-Fi network for Internet access.

Opening a Webpage

1. In a browser window, touch the URL field at the top of the screen.
2. Use the keyboard to enter a webpage address.
3. As you enter the address, matching webpage addresses will appear on the screen. If you see the address you want, touch it and go directly to that webpage or complete entering your desired webpage.

Turning Off Your Data Service


When you are not using your data service, to eliminate unwanted data traffic, you can turn it off quickly.

1. Open the notification bar.
2. Touch  at the top of the screen to switch data services on or off.

Play Store

Play Store provides direct access to applications and games which you can download and install on your phone.

Opening Play Store

1. On the Home screen, touch  > **Play Store**.
2. When you open **Play Store** for the first time, the **Google Play** window will appear. Touch **Accept** to continue.

Installing an Application

1. In the **Play Store**, select a category, and then touch the application you want to download.
2. To install the application, touch **Download** (if it is free) or touch the button with a price (if it is not free), and confirm your download or purchase.

After the application has been downloaded and installed on your mobile phone, the content download icon appears in the notification bar.

- ⓘ If you want to install a non-Play Store application, touch **⋮** > **Settings** > **Applications**, and then select the **Unknown sources** check box to allow installation of the non-Play Store application.

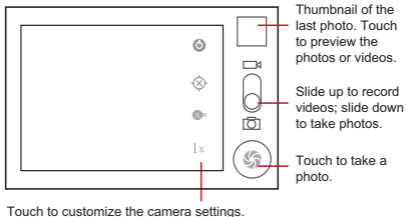
Uninstalling an Application

- ⓘ You cannot uninstall the applications that are pre-installed on the system.
1. On the **Settings** screen, touch **Applications** > **Manage applications**.
 2. Touch an application, and then touch **Uninstall**.

Opening Your Camera

You can take and share photos using the camera. Your camera supports multiple capture modes and photo effects. After taking a picture, access the **Gallery** to view it. For information on how to share photos and videos, see the User Guide.

Capture Screen



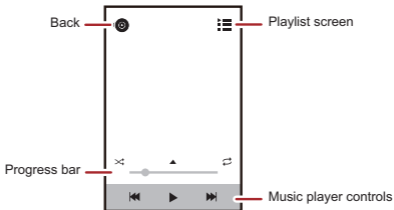
Using the microSD Card as a USB Mass Storage

1. Connect your mobile phone to your PC with the USB cable provided. Your PC will detect the microSD card as a removable storage device.
2. Open the notification bar, and then touch **USB connected**.
3. Touch **Turn on USB storage** in the dialog box that opens to confirm that you want to transfer files.

You can now transfer files from your PC to your mobile phone's microSD card.

Playing Music

You can listen to music that you have stored on your microSD card using the music player. The music player will automatically search for any music on the microSD card sort it into albums and playlists.



Synchronizing Information

Some applications on your mobile phone give you access to the same personal information that you can add, view, and edit on your computer. If you add, change, or delete your information in any of these applications on the web, the updated information also appears on your mobile phone.

This is made possible through over-the-air data synchronization. The process occurs in the background and does not interfere with use of your mobile phone. When your phone is synchronizing, a data synchronization icon will be shown in the notification bar.

For more information, see the User Guide.

FAQs

How Can I Use a microSD Card to Import Contacts to My Phone from a Different Mobile Phone?

Your mobile phone only supports contact files in the **.vcf** format.

1. Save the contacts you want to import to your mobile phone to a microSD card as a **.vcf** file.
2. Insert the microSD card into your mobile phone and find the **.vcf** file using **File Manager**.
3. Touch the **.vcf** file. The phone displays a message asking whether you want to import the contacts.
4. Touch **OK** to import the contacts.

ⓘ Compatibility problems may occur with **.vcf** files created by different mobile phones and certain contact information may be lost after contacts are imported.


How Do I Set a Song As a Phone Ringtone?

In **Music**, touch and hold the song to be set as a ringtone, and then touch **Set as ringtone**.

How Do I Prevent Automatic Change of Screen Orientation When Rotating My Phone?

On the Home screen, touch  > **Settings** > **Display** > **Auto-rotate screen** to disable the function.

How Do I Set an Unlock Pattern?

On the Home screen, touch  > **Settings** > **Location & security** > **Set up screen lock** > **Pattern**.

How Can I Change the Input Method?

Touch and hold the area where you write text and then select the input method you prefer.

How Do I Stop the Song Playing in the Background?

Touch the notification bar, flick downwards to open the notifications panel, touch the music playing notification to go to the music playing screen, and then stop playing the song.

How Do I Return to the Call Screen?

While in a call, if you're on another screen, you can touch the notification bar, and flick downwards to open the notifications panel. Then touch the current call notification to return to the call screen.

How Do I Create an Application Shortcut on the Home Screen?

Touch and hold an application icon on the application screen until the Home screen is displayed. Then drag the icon to where you want to place it and release your finger.

How Do I Hide the Keyboard?

Touch  to hide the keyboard.

How Do I Forward a Message?


Touch and hold a message, and then touch **Forward** in the menu that opens.

Why Am I Unable to Use Navigation?

Navigation is unavailable in some countries or regions.

How Do I Use Quick GPS?

On the Home screen, touch  > **Settings** > **Location & security** > **Use Quick GPS**.

-  Quick GPS downloads data to enhance the GPS satellite information and may therefore incur additional data charges.

Warnings and Precautions

This section contains important information pertaining to the operating instructions of your device. It also contains information about how to use the device safely. Read this information carefully before using your device.

Electronic Device

Power off your device if using the device is prohibited. Do not use the device when using the device causes danger or interference with electronic devices.

Medical Device

- Follow rules and regulations set forth by hospitals and health care facilities. Do not use your device when using the device is prohibited.
- Pacemaker manufacturers recommend that a minimum distance of 15 cm be maintained between a device and a pacemaker to prevent potential interference with the pacemaker. If you are using a pacemaker, use the device on the opposite side of the pacemaker and do not carry the device in your front pocket.

Potentially Explosive Atmosphere

Power off your device in any area with a potentially explosive atmosphere, and comply with all signs and instructions. Areas that may have potentially explosive atmospheres include the areas where you would normally be advised to turn off your vehicle engine. Triggering of sparks in such areas could cause an explosion or a fire, resulting in bodily injuries or even deaths. Do not power on your device at refueling points such as service stations. Comply with restrictions on the use of radio equipment in fuel depots, storage, and distribution areas, and chemical plants. In addition, adhere to restrictions in areas where blasting operations are in progress. Before using the device, watch out for areas that have potentially explosive atmospheres that are often, but not always, clearly marked. Such locations include areas below the deck on boats, chemical transfer or storage facilities, and areas where the air contains chemicals or particles such as grain, dust, or metal powders. Ask the manufacturers of vehicles using liquefied petroleum gas (such as propane or butane) whether this device can be safely used in their vicinity.

Traffic Security

Observe local laws and regulations while using the device. In addition, if using the device while driving a vehicle, comply with the following guidelines:

- Concentrate on driving. Your first responsibility is to drive safely.

- Do not talk on the device while driving. Use hands-free accessories.
- When you have to make or answer a call, park the vehicle at the road side before using your device.
- RF signals may affect electronic systems of motor vehicles. For more information, consult the vehicle manufacturer.
- In a motor vehicle, do not place the device over the air bag or in the air bag deployment area. Otherwise, the device may hurt you owing to the strong force when the air bag inflates.
- Do not use your device while flying in an aircraft. Power off your device before boarding an aircraft. Using wireless devices in an aircraft may cause danger to the operation of the aircraft and disrupt the wireless telephone network. It may also be considered illegal.

Operating Environment

- Do not use or charge the device in dusty, damp, and dirty places or places with magnetic fields. Otherwise, it may result in a malfunction of the circuit.
- The device complies with the RF specifications when the device is used near your ear or at a distance of 1.5 cm from your body. Ensure that the device accessories such as a device case and a device holster are not composed of metal components. Keep your device 1.5 cm away from your body to meet the requirement earlier mentioned.
- On a stormy day with thunder, do not use your device when it is being charged, to prevent any danger caused by lightning.
- When you are on a call, do not touch the antenna. Touching the antenna affects the call quality and results in increase in power consumption. As a result, the talk time and the standby time are reduced.
- While using the device, observe the local laws and regulations, and respect others' privacy and legal rights.

- Keep the ambient temperature between -10°C and 45°C while the device is being charged. Keep the ambient temperature between -10°C to 55°C for using the device powered by a battery.

Prevention of Hearing Damage

Using a headset at high volume can damage your hearing. To reduce the risk of damage to hearing, lower the headset volume to a safe and comfortable level.

Safety of Children

Comply with all precautions with regard to children's safety. Letting the child play with your device or its accessories, which may include parts that can be detached from the device, may be dangerous, as it may present a choking hazard. Ensure that small children are kept away from the device and accessories.

Accessories

Choose only batteries, chargers, and accessories approved for use with this model by the device manufacturer. The use of any other type of battery, charger, or accessory may invalidate any warranty for the device, may be in violation of local rules or laws, and may be dangerous. Please contact your dealer for information about the availability of approved batteries, chargers, and accessories in your area.

Battery and Charger

- Unplug the charger from the electrical plug and the device when not in use.
- The battery can be charged and discharged hundreds of times before it eventually wears out. When the standby time and the talk time are shorter than the normal time, replace the battery.
- Use the AC power supply defined in the specifications of the charger. An improper power voltage may cause a fire or a malfunction of the charger.

- Do not connect two poles of the battery with conductors, such as metal materials, keys, or jewelries. Otherwise, the battery may be short-circuited and may cause injuries and burns on your body.
- If battery electrolyte leaks out, ensure that the electrolyte does not touch your skin and eyes. When the electrolyte touches your skin or splashes into your eyes, wash your eyes with clean water immediately and consult a doctor.
- If there is a case of battery deformation, color change, or abnormal heating while you charge or store the battery, remove the battery immediately and stop using it. Otherwise, it may lead to battery leakage, overheating, explosion, or fire.
- If the power cable is damaged (for example, the cord is exposed or broken), or the plug loosens, stop using the cable at once. Otherwise, it may lead to an electric shock, a short circuit of the charger, or a fire.
- Do not dispose of batteries in fire as they may explode. Batteries may also explode if damaged.
- Do not modify or remanufacture, attempt to insert foreign objects into the battery, immerse or expose to water or other liquids, expose to fire, explosion or other hazard.
- Avoid dropping the device or battery. If the device or battery is dropped, especially on a hard surface, and the user suspects damage, take it to a qualified service center for inspection.
- Improper battery use may result in a fire, explosion or other hazard.
- Promptly dispose of used batteries in accordance with local regulations.
- The device should only be connected to products that bear the USB-IF logo or have completed the USB-IF compliance program.
- Only use the battery with a charging system that has been qualified with the system per this standard, IEEE-Std-1725-

2006. Use of an unqualified battery or charger may present a risk of fire, explosion, leakage, or other hazard.

- Replace the battery only with another battery that has been qualified with the system per this standard, IEEE-Std-1725-2006. Use of an unqualified battery may present a risk of fire, explosion, leakage or other hazard.

Cleaning and Maintenance

- The device, battery, and charger are not water-resistant. Keep them dry. Protect the device, battery, and charger from water or vapor. Do not touch the device or the charger with a wet hand. Otherwise, it may lead to a short circuit, a malfunction of the device, and an electric shock to the user.
- Do not place your device, battery, and charger in places where they can get damaged because of collision. Otherwise, it may lead to battery leakage, device malfunction, overheating, fire, or explosion.
- Do not place magnetic storage media such as magnetic cards and floppy disks near the device. Radiation from the device may erase the information stored on them.
- Do not leave your device, battery, and charger in a place with an extreme high or low temperature. Otherwise, they may not function properly and may lead to a fire or an explosion. When the temperature is lower than 0°C, performance of the battery is affected.
- Do not place sharp metal objects such as pins near the earpiece. The earpiece may attract these objects and hurt you when you are using the device.
- Before you clean or maintain the device, power off the device and disconnect it from the charger.
- Do not use any chemical detergent, powder, or other chemical agents (such as alcohol and benzene) to clean the device and the charger. Otherwise, parts of the device may be damaged or

a fire can be caused. You can clean the device and the charger with a piece of damp and soft antistatic cloth.

- Do not dismantle the device or accessories. Otherwise, the warranty on the device and accessories is invalid and the manufacturer is not liable to pay for the damage.
- If the device screen is broken by colliding with hard objects, do not touch or try to remove the broken part. In this case, stop using the device immediately, and then contact an authorized service center in time.

Emergency Call

You can use your device for emergency calls in the service area. The connection, however, cannot be guaranteed in all conditions. You should not rely solely on the device for essential communications.

Certification Information (SAR)

This device meets guidelines for exposure to radio waves.

Your device is a low-power radio transmitter and receiver. As recommended by international guidelines, the device is designed not to exceed the limits for exposure to radio waves. These guidelines were developed by the independent scientific organization International Commission on Non-Ionizing Radiation Protection (ICNIRP) and include safety measures designed to ensure safety for all users, regardless of age and health.

The Specific Absorption Rate (SAR) is the unit of measurement for the amount of radio frequency energy absorbed by the body when using a device. The SAR value is determined at the highest certified power level in laboratory conditions, but the actual SAR level of the device when being operated can be well below the value. This is because the device is designed to use the minimum power required to reach the network.

The SAR limit adopted by USA and Canada is 1.6 watts/kilogram (W/kg) averaged over one gram of tissue. The Highest SAR value reported to the FCC and IC for this device type when tested for use at the ear is 0.480 W/kg, when properly worn on body is 1.280 W/kg, and when using Wi-Fi hotspot function is 1.280 W/Kg.

FCC Statement

This equipment has been tested and found to comply with the limits for a Class B digital device, pursuant to Part 15 of the FCC Rules.

These limits are designed to provide reasonable protection against harmful interference in a residential installation. This equipment generates, uses and can radiate radio frequency energy and, if not installed and used in accordance with the instructions, may cause harmful interference to radio communications. However, there is no guarantee that interference will not occur in a particular installation. If this equipment does cause harmful interference to radio or television reception, which can be determined by turning the equipment off and on, the user is encouraged to try to correct the interference by one or more of the following measures:

- Reorient or relocate the receiving antenna.
- Increase the separation between the equipment and receiver.
- Connect the equipment into an outlet on a circuit different from that to which the receiver is connected.
- Consult the dealer or an experienced radio/TV technician for help.

This device complies with Part 15 of the FCC Rules. Operation is subject to the following two conditions: (1) this device may not cause harmful interference, and (2) this device must accept any interference received, including interference that may cause undesired operation.



Changes or modifications made to this device not expressly approved by Huawei Technologies Co., Ltd. may void the FCC authorization to operate this device.

Personal Information and Data Security

The use of some functions or third-party applications on your device could result in your personal information and data being lost or becoming accessible to others. Several measures are

recommended to help you protect personal and confidential information.

- Place your device in a safe area to prevent it from unauthorized use.
- Set your device screen to lock and create a password or unlock pattern to open it.
- Periodically back up personal information kept on your SIM/UIM card, memory card, or stored in your device memory. If you change to a different device, be sure to move or delete any personal information on your old device.
- If you are worried about viruses when you receive messages or emails from a stranger, you can delete them without opening them.
- If you use your device to browse the Internet, avoid websites that might pose a security risk to avoid theft of your personal information.
- If you use services such as Wi-Fi tether or Bluetooth, set passwords for these services to prevent unauthorized access. When these services are not in use, turn them off.
- Install or upgrade device security software and regularly scan for viruses.
- Be sure to obtain third-party applications from a legitimate source. Downloaded third-party applications should be scanned for viruses.
- Install security software or patches released by Huawei or third-party application providers.
- Some applications require and transmit location information. As a result, a third-party may be able to share your location information.
- Your device may provide detection and diagnostic information to third-party application providers. Third party vendors use this information to improve their products and services.

- If you have concerns about the security of your personal information and data, please contact mobile@huawei.com.

Legal Notice

Copyright © Huawei Technologies Co., Ltd. 2012. All rights reserved.

No part of this document may be reproduced or transmitted in any form or by any means without prior written consent of Huawei Technologies Co., Ltd.

The product described in this manual may include copyrighted software of Huawei Technologies Co., Ltd. and possible licensors. Customers shall not in any manner reproduce, distribute, modify, decompile, disassemble, decrypt, extract, reverse engineer, lease, assign, or sublicense the said software, unless such restrictions are prohibited by applicable laws or such actions are approved by respective copyright holders.

Trademarks and Permissions

  , and **HUAWEI** are trademarks or registered trademarks of Huawei Technologies Co., Ltd.

Android is a trademark of Google Inc.

Other trademarks, product, service and company names mentioned are the property of their respective owners.

Notice

Some features of the product and its accessories described herein rely on the software installed, capacities and settings of local network, and therefore may not be activated or may be limited by local network operators or network service providers. Thus the descriptions herein may not match exactly the product or its accessories you purchase.

Huawei Technologies Co., Ltd. reserves the right to change or modify any information or specifications contained in this manual without prior notice and without any liability.

Third-Party Software Statement

Huawei Technologies Co., Ltd. does not own the intellectual property of the third-party software and applications that are delivered with this product. Therefore, Huawei Technologies Co., Ltd. will not provide any warranty of any kind for these third-party software and applications. Neither will Huawei Technologies Co., Ltd. provide support to customers who use these third-party software and applications, nor be responsible or liable for the functions of these third-party software and applications.

Third-party software and applications services may be interrupted or terminated at any time. Huawei Technologies Co., Ltd. does not guarantee that any content or service would be maintained for any period during its availability. Third-party service providers provide content and services through network or transmission tools outside of the control of Huawei Technologies Co., Ltd. To the greatest extent permitted by applicable law, it is explicitly stated that Huawei Technologies Co., Ltd. shall not compensate or be liable for services provided by third-party service providers, or the interruption or termination of third-party contents or services.

Huawei Technologies Co., Ltd. shall not be responsible for the legality, quality, or any other aspects of any software installed on this product, or for any uploaded or downloaded third-party works, such as texts, images, videos, or software. Customers shall bear the risk for any and all effects, including incompatibility between the software and this product, which result from installing software or uploading or downloading the third-party works.

This product uses the open-source Android™ platform. Huawei Technologies Co., Ltd. has made necessary changes to the platform. Therefore, this product may not support all the functions that are supported by the standard Android platform or may be incompatible with third-party software. Huawei Technologies Co., Ltd. shall not be liable for any of such situation.

DISCLAIMER OF WARRANTIES

THE CONTENTS OF THIS MANUAL ARE PROVIDED "AS IS". EXCEPT AS REQUIRED BY APPLICABLE LAWS, NO

WARRANTIES OF ANY KIND, EITHER EXPRESS OR IMPLIED, INCLUDING BUT NOT LIMITED TO, THE IMPLIED WARRANTIES OF MERCHANTABILITY AND FITNESS FOR A PARTICULAR PURPOSE, ARE MADE IN RELATION TO THE ACCURACY, RELIABILITY OR CONTENTS OF THIS MANUAL.

LIMITATIONS OF LIABILITY

TO THE MAXIMUM EXTENT PERMITTED BY APPLICABLE LAW, IN NO EVENT SHALL HUAWEI TECHNOLOGIES CO., LTD. BE LIABLE FOR ANY SPECIAL, INCIDENTAL, INDIRECT, OR CONSEQUENTIAL DAMAGES, OR LOST PROFITS, BUSINESS, REVENUE, DATA, GOODWILL OR ANTICIPATED SAVINGS.

THE MAXIMUM LIABILITY (THIS LIMITATION SHALL NOT APPLY TO LIABILITY FOR PERSONAL INJURY TO THE EXTENT APPLICABLE LAW PROHIBITS SUCH A LIMITATION) OF HUAWEI TECHNOLOGIES CO., LTD. ARISING FROM THE USE OF THE PRODUCT DESCRIBED IN THIS DOCUMENT SHALL BE LIMITED TO THE AMOUNT PAID BY CUSTOMERS FOR THE PURCHASE OF THIS PRODUCT.

Import and Export Regulations

Customers shall comply with all applicable export or import laws and regulations and be responsible to obtain all necessary governmental permits and licenses in order to export, re-export or import the product mentioned in this manual including the software and technical data therein.

Getting More

- Please visit www.huaweidevice.com/worldwide for user guide.
- Please visit www.huaweidevice.com/worldwide/support/hotline for recently updated hotline and email address in your country or region.
- Please visit www.huaweidevice.com for recently updated software for your device.



Envelo | Headphone

Manufactured under license from DTS
Licensing Limited. DTS, the Symbol, & DTS
and the Symbol together are registered
trademarks & DTS Envelo | Headphone is
a trademark of DTS, Inc. Product includes
software. © 2012 DTS, Inc. All Rights
Reserved.

HUAWEI C8655

V100R001_01 31010KBR