

NEC

NEC-101T

User Guide

**S
V
I
C
E
M**

Thank you for purchasing of this product. Before using this product, read this manual.

Precautions

To ensure that you use this product correctly, please read the following before use. These precautions must be observed at all times as they contain information intended to prevent body injury or damage to property.

- Do not use, keep, or leave the devices (this product, battery pack, AC charger, SIM card, and other supplied options) in locations subject to high temperatures, such as near fire, indirect sunlight, inside of a car on a hot day, or near a heating system.
- Do not put the devices in heating equipment such as a microwave oven or pressurized container.
- Do not put the devices on the unstable place such as an unstable chair.
- Do not disassemble or modify the devices.
- Do not place electrically conductive objects (wires, pencil leads, etc.) in contact with the charging product or microUSB connector. Do not insert such materials inside the product.
- Do not cover or wrap the devices with bedding, etc. while in using or charging.
- If something unusual happens, such as unusual odor, overheating, discoloration, or deformation during use, charge or storage, be sure to:
 - Unplug the AC charger from the power outlet.
 - Turn off the power.
 - Remove the battery pack from this product.
- Do not leave or use the devices in humid or dusty places.
- Use a battery pack and AC charger specified by NEC de México, S.A. de C.V.
- Do not throw the devices, or expose to excessive shock or mechanical vibration.
- Do not use damaged devices.
- The supplied AC charger and battery pack are exclusive for this product. Do not use these with other devices.

Precautions for this product

- Avoid using this product in extremely high or low temperatures. The ambient temperature for operating should be 5°C to 40°C (limited to the temporary use in a bathroom etc. when temperature is above 36°C) with humidity of 45% to 85%.
- Make sure to turn off this product and stop charging before you get close to places like a gas station where a flammable gas is generated.
- Do not turn on the light near a person's or pets' eyes.
- Do not turn on the light against car drivers, etc. Doing so may interfere with driving and cause a traffic accident.
- Please turn off this product when inside an airplane, hospital, or other area where use is prohibited.
 - The product may adversely affect electronic or medical equipment. Follow the instructions provided by the medical facility for the use of mobile phones.

- Using the phone in an airplane is prohibited, and is punishable by law. However, to enable use inside an airplane such as using a non-emission setting, follow the instructions of the airplane before using.
- Make sure to hold this product at a safe distance from your ear when you talk with the speaker on, or when the ring tone sounds. Also, when you play games or music with an earphone / microphone etc. connected to the product, adjust the volume properly.
- When viewing the display, maintain a proper distance between your eyes and the screen in a bright place.
- Do not view the display for a long period continuously.
- There may be cases where the customer's physical condition or predisposition leads to itchiness, rashes, or sores. If this occurs, immediately stop using this product and see a doctor.
- For materials of each part, refer to "Material list" (P.6).
- Operations of this product for a long period repeatedly may cause pain on your hand, arthralgia, backache, stiff shoulders, etc.
- If you have a weak heart, take precautions when setting the Vibrator or Ring volume.
- Please turn off the power near electronic equipment that contains high-precision mechanisms or handles delicate signals.

The product may interfere with the operation of sensitive electronic equipment. Electronic equipment to watch out for includes hearing aids, implanted pacemakers, ICDs, and other electronic medical devices; fire alarms, automatic doors, and other automatically controlled apparatus. Users of implanted pacemakers, ICDs, and other electronic medical devices are advised to ask their doctor, the manufacturer of the equipment, or the shop of purchase whether or not these devices can be affected by radio waves.

- If the display or camera lens is broken, be careful with broken glass and any exposed product parts. A protective film is used for the display, and a plastic panel is used for the camera lens surfaces to avoid glass scattering. However, touching broken or exposed parts may cause injury.
- If the display is broken and the liquid crystal leaks, do not touch it with your face, hands, etc.
- The display has a protective film on its surface. It helps you ensure safety even when the display gets damaged due to a fall or shock (shatterproof hardened glass). Do not remove or scratch the protective film.
- Do not swing this product by the strap or other parts.
- Do not use this product outside when you hear thunder.
- The service of the emergency calls is not supported for all areas. Please only consider this product is one way to make emergency calls, such as calling the ambulance.
- Do not place water or other liquid, metal items, easily burnable objects, etc., around the SIM card tray or microSD card slot.
- Do not paint or put labels / stickers on this product.

Precautions for children and pets

- Keep the devices out of children's or pets' reach. Children or pets may try to swallow them, etc., or suffer injury.
- Keep your pets away from the battery pack as they may accidentally bite it.
- If a child is to use this product, instruct him / her on how to use it. Check if he / she always uses this product correctly as you instruct.

Precautions for charging

- Pay special attention when you use this product connected to the AC charger for a long period. If you use for a long time while charging, the temperature of the product, battery pack, or AC charger may rise. If you touch the warm part of these devices for a long period of time, it may cause redness, itch, skin irritation, or low temperature burns depending on your constitution or physical condition.
- Do not use the AC charger if the microUSB cable is damaged.
- Do not use the AC charger in humid locations such as a bathroom.
- Do not touch the AC charger when you see lightning or hear thunder.
- Do not use the AC charger outside.
- Do not short-circuit the charging terminals when the AC charger is plugged into the power outlet. Also, do not let the charging terminals contact with your body (hand, fingers, etc.).
- Do not put heavy objects on the microUSB cable of the AC charger.
- When plugging / unplugging the AC charger into / from the power outlet, make sure that no metallic straps or other metallic objects are caught between the plug and the socket.
- When plugging the AC charger into the power outlet, make sure to insert it firmly.
- Use the specified voltage and current. AC charger: AC 100 V to 240 V (household AC outlet only)
- Wipe off any dust on the plug.
- Always grasp the AC charger when unplugging the plug from the power outlet. Do not pull the microUSB cable itself.
- If water or other liquid gets into the AC charger, immediately unplug it from the power outlet.
- Unplug the AC charger from the power outlet when the AC charger will be left unused for a long period.
- Unplug the AC charger from the power outlet before cleaning it.
- The ambient temperature of the room should be 5°C to 35°C.

Precautions for the battery pack

- Check the orientation of the battery pack before attaching. If you have difficulty attaching to this product, do not put excessive pressure on the battery pack.
- Do not place metal items such as wires in contact with the charging terminals. Also, do not carry or store the battery pack with metal items such as a necklace.
- Do not throw the battery pack into fire.
- Do not puncture the battery pack, hit it with a hammer or step on it.
- Do not use or charge the battery pack if wet.
- Never use the battery pack if something abnormal such as deformation or damaged has occurred.
- If the battery pack leaks or emits an unusual odor, stop using it immediately and move it away from any flame or fire.
- If the battery pack leaks, do not touch any leaked battery fluid etc., with your face, hands, etc. Failure to observe this precaution may cause loss of eyesight or damage to your skin. If the battery fluid etc. gets into your eyes or mouth, or it adheres to your skin or clothing, immediately rinse with clean water. In this case of contact with your eyes or mouth, see a doctor immediately after rinsing.

Precautions for the SIM card

- Be careful with sharp edges when removing the SIM card.

Precautions for using near electric medical devices

- If you are wearing electronic medical devices, ask your doctor whether the devices can be affected by radio waves before using.
- Take care of the following inside hospitals.
 - Do not take this product into the operating room, intensive care unit (ICU), or coronary care unit (CCU).
 - Turn off the power even in hospital lobbies, waiting rooms and corridors if electronic medical devices may be in use near you.
 - For use inside medical institutions, please follow the instructions given at individual locations.
- A person with an implanted pacemaker or ICD should use or carry this product at a distance more than 22 cm from the site of implantation. Radio waves emitted by this product may adversely affect implanted pacemakers and ICDs when using in close proximity.

Precautions for driving

- Before using in a vehicle, ask the manufacturer or sales agent whether the operation of the vehicle can be affected by radio waves. In some types of vehicle, using this product may interfere with the operation of the vehicle's electronic equipment. In this case, stop using this product immediately.
- Be careful when using this product while driving. A fine may be imposed for holding a mobile phone while driving. However, exceptions are made in case of emergency, such as to safeguard injured persons or to maintain public safety.
- Please check the law and regulations of the area for using a mobile phone, and follow them.
- Please do not place this product near the air bag of a car. When the air bag operates, it may be injured by this product.

Disposing the battery pack

- Do not dispose of used battery packs with ordinary garbage. Check local regulations by contacting your local city office or your household waste disposal service for disposing.

■ Material list

Part		Material / Surface treatment
Outer case	Display surface	Nylon resin / UV coating PC resin / UV coating Acrylic resin / UV coating
	Battery side	Nylon resin / UV coating PPE Polyphenyleneether (black sheet under back cover)
Camera lens		Acrylic resin / UV coating
Display		Glass
Anti-splinter film		PET resin
Key	Power switch	PC / UV coating
	Volume keys	PC / UV coating
Side frame		Aluminum / Alumite painting
Back cover	Outer side	PC resin / UV coating
	Water stop	Silicone / Silicon coating
Cap (microUSB connector)	Outer side	PC resin / UV coating
	Water stop	Silicone / Silicon coating
microUSB connector		Stainless alloy
Machine screw		Stainless alloy
Battery pack recess	Recess surface	Side: Nylon resin Bottom: Polyester film (Label) : Stainless alloy (Metal Part) : Epoxy resin (Substrate)
	SIM slot tray	POM resin
Battery terminal	Terminal connector	LCP resin
	Terminals	Gold plating
Battery pack (terminal)	Battery pack	Resin: PC resin Label: PET resin
	Terminals	Gold plating

Handling Precautions

- While this product is designed to be waterproof, do not allow water to seep into this product. Also, do not allow accessories and optional equipment to get wet. The battery pack, AC charger, SIM card, microSD card, and other supplied options are not waterproof. Do not use them in a humid place such as a bathroom or in the rain. If you carry this product close to your body, perspiration may corrode the internal parts of this product and cause malfunction. Note that if trouble is diagnosed as exposure to water or other liquid, repair of this product may not be covered by the warranty or repair may not be possible. Repair, when possible, is not covered by the warranty and is carried out at cost.
- Wipe with a soft, dry cloth (such as an eyeglass cleaning cloth).
 - Rubbing the display of this product with a dry cloth may scratch the display surface.
 - The display surface may be stained if moisture or dirt is left on it for a long period.
 - Never use chemicals such as alcohol, thinners, benzen, or detergents, as these agents may erase the printing on this product or cause discoloration.
- Occasionally clean the connection terminals with a dry cotton swab, etc.
 - Soiled connectors may result in poor connections, loss of power, or incomplete charging. Wipe with a dry cloth or cotton swab.
- Do not place this product near an air conditioning vent. Condensation may form due to rapid changes in temperature, and this may cause internal corrosion and malfunction.
- Do not put excessive pressure on this product or battery pack.
 - Do not put this product in a bag filled with many objects or sit down with it in a hip pocket.
 - Excessive pressure may result in malfunction or damage to the display, internal circuit or the battery pack, etc. Also, if an external device is connected to the external connector terminal (earphone / microphone terminal), excessive pressure may result in malfunction or damage to the connector.
- Do not scratch the display with metallic objects.

Handling the product

- Do not use forcefully push or use a pointed object (nails, ball pointed pen, pin, etc.) on the touch panel.
- Reception may be affected if you use this product near a land-line phone, television, or radio in use. Use this product away from such devices.
- Ensure this product does not come near a fire such as a stove, or fall from a tabletop (the product may slide when it vibrates).
- When connecting an external device to the microUSB connector (earphone / microphone terminal), do not insert at an angle to connect or pull the cord.

- It is normal for this product to become warm while being used or charged. This is not a malfunction.
- Do not leave the camera exposed to direct sunlight. Doing so may discolor or burn its components.
- Keep the microUSB connector cap closed when not in use.
- Do not use this product with the back cover removed. Doing so may cause the battery pack to fall out, or cause malfunction or damage.
- Do not insert hard, sharp objects into the earpiece, mouthpiece, speaker, or sub-microphone.
- Do not remove the microSD card or turn off the power while in use. Doing so may cause data loss or malfunction.
- Do not let magnetic cards, etc. come close to this product or its parts. The magnetic data in cash cards, credit cards, prepaid cards, floppy disks, etc. may be erased.
- Do not let strong magnetic objects come close to this product or its parts. Strong magnetism may cause a malfunction.
- Keep a separate record of the information you have registered for this product.
 - NEC de México, S.A. de C.V. bears no obligation or responsibility in the event that data is altered or lost.

Handling the battery pack

- The battery pack is replaceable. Battery life varies depending on usage conditions, etc., but it is time to change the battery charger when the usage time has become extremely short, even when it has been fully charged. In this case, purchase a new battery pack.
- Depending on the usage condition, the battery pack may expand slightly when the battery life is almost over. This is not a malfunction.
- Do not store the battery pack in the following cases.
 - The battery is fully charged (immediately after the charging is complete).
 - The battery has run out (the phone cannot power on). The performance and life of the battery pack may deteriorate.It is recommended that you store the battery pack with around 40% of a full charge.

Handling the AC charger

- Do not charge the battery pack at the following places.
 - A humid, dusty or unstable place
 - Near a land-line phone, TV, or radio
- Do not expose the AC charger to strong shocks. Do not deform the charging terminal.
- If you use an electrical outlet with an unplugging-protection mechanism, follow the instructions of the manual for the outlet.
- Do not use a car DC adapter to charge the battery pack when the car engine is not running.

Handling the SIM card

- Do not apply excessive force to the SIM card when attaching / removing it.
- Note that the warranty does not cover damage caused by inserting the SIM card into another type of the IC card reader or writer.
- Always keep the IC part clean.
- Wipe with a soft, dry cloth (such as an eyeglass cleaning cloth) for cleaning.
- Keep a separate record of the information you have registered in your SIM card.
 - NEC de México, S.A. de C.V. bears no obligation or responsibility in the event that data is altered or lost.
- Do not damage, scratch, unnecessarily touch, or short-circuit the IC part.
- Do not drop the SIM card or expose it to strong shocks.
- Do not bend the SIM card or place a heavy object on it.
- Do not put a label or sticker on the SIM card when attaching it to this product.

Statements of Compliance

COFETEL

"The operation of this product is the subject to the following conditions:

- (1) This product may not cause harmful interference, and
- (2) This product must accept any interference, including interference that may cause the undesired operation."

Table of Contents

Precautions	3	Creating an application folder	24
Precautions for this product	3	Setting the wallpaper	24
Precautions for children and pets	4	Status Bar	24
Precautions for charging	4	Status icons	24
Precautions for the battery pack	4	Notification icons.....	25
Precautions for the SIM card	4	Applications List Screen	25
Precautions for using near electric medical devices	4	Applications list	26
Precautions for driving	5	Widgets list	27
Disposing the battery pack.....	5	Task Manager	27
Handling Precautions	7	Text Entry	28
Handling the product.....	7		
Handling the battery pack	7	<hr/>	
Handling the AC charger.....	8	Calling	29
Handling the SIM card	8	Making a Call	29
Statements of Compliance	8	Operations during a call	29
COFETEL	8	Making an international call	29
About This Manual	11	Receiving a Call	30
Notes	11	Call forwarding.....	30
Bluetooth® Function	12	Voicemail	30
Wireless LAN	12	Using the earphone cable (hands-free phone)	30
Waterproof / Dustproof Function	13	Call Log	31
Things to keep in mind.....	13	Contacts (Phonebook)	31
Important notices	14	Creating a contact.....	31
Draining water when the product gets wet	15	Displaying the profile screen.....	32
When charging the battery pack	15	Favorites	32
		<hr/>	
Getting Started	16	Email / Browser	33
Parts Names	16	Email	33
Removing / Attaching the Back Cover	16	Displaying email.....	33
Inserting the SIM Card	17	Creating and sending email	33
Inserting the microSD Card	17	Opening mailboxes	33
Attaching the Battery Pack	18	Changing email settings	33
Opening / Closing the microUSB Connector Cap ...	18	Gmail	34
Charging the Battery	19	Displaying Gmail.....	34
Charging with the PC connection.....	19	Creating and sending Gmail	34
Basic Operation	19	Managing message threads	34
Using the front keys	19	Changing Gmail settings.....	34
Using the touch panel	19	Messaging (SMS / MMS)	35
Turning Power On and Off	20	Creating and sending Message	35
Turning power on	20	Displaying sent / received Message	35
Turning power off	20	Displaying the Message conversation	35
Initial Settings	21	Displaying the folder list.....	35
Access Point Settings	21	Moving Message.....	35
Adding an access point.....	21	Deleting Message	35
Initializing an access point	21	Changing Message settings	35
Wi-Fi Settings	22	Google Talk	36
Connecting with Wi-Fi easy settings	22	Browser	36
Adding a Wi-Fi network manually	22	Using bookmarks	37
Disconnecting a connected Wi-Fi network	22	Changing browser settings	37
Optional settings for Wi-Fi.....	22		
Setting an Email Account	23	<hr/>	
Setting a Google or other account	23	Android Market	38
Idle Screen	23	Installing Applications	38
Adding an application shortcut.....	23	Deleting applications.....	38
		Changing Android Market settings.....	38

GPS	39
Enabling the Location Service	39
Google Maps	40
Looking up directions	40
Navigation	41
Places	41
Latitude	42

Multimedia..... 43

Camera	43
Shooting photos	43
Shooting videos	43
Gallery	44
Music Player	44
Using playlist.....	45

Clock / Calendar 46

Clock	46
Setting the alarm	46
Calendar	46
Creating a schedule	46
Changing calendar settings	46

Settings 47

Setting List	47
Wireless & networks	47
Call settings	47
Ringtones and sounds	48
Display	48
eco mode	48
Location & security.....	48
Applications.....	49
Accounts & sync	49
Privacy	49
Storage	49
Language & keyboard	49
Voice input & output.....	50
Accessibility	50
Date & time	50
About phone.....	50
Wizard	50

Mobile Networks 51

Bluetooth	51
Connecting to a Bluetooth device	52

Connecting to a VPN 52

Adding a VPN	52
Connecting to a VPN	52

Security Code..... 53

PIN1 code / PIN2 code	53
Enabling the SIM's PIN	53
PIN unblocking key (PUK)	53

File Management 54

Bluetooth Communication	54
Sending	54

Receiving	54
Connecting a PC	54

Appendix..... 55

Troubleshooting	55
Error message	57
Warranty and After-Sales Service	57
Warranty	57
After-sales service	57
Precautions	58
Memory dial (Contacts) and downloaded data	58
Updating Software	59
Before updating software	59
Updating immediately	59
Confirming update	60
Automatically Software Update (Auto update).....	60
Specifications	61
Radio Frequency (RF) Signals	63
FCC Regulations	64
Declaration of Conformity	65
Intellectual Property Right	65
Copyright and portrait rights	65
Trademarks.....	65
Others	66
Notational conventions for Windows.....	66
GPL / LGPL - applicable software	66

About This Manual

- Some of contents of this manual are not supported in all countries / regions or by all networks and / or service providers in all areas.
Contact your network operator or service provider for any specific service or feature and to determine whether additional access or usage fees apply.
- In this manual, operations are simplified as follows.

Description	Operation
From the Idle screen, tap [■■■] ▶ "Settings" ▶ "Wireless & networks".	From the Idle screen, tap [■■■], then "Settings", then "Wireless & networks".

- Display examples used in this manual are for explanation only and may be different from the actual display.
- This manual assumes the settings are the same as they were when you purchased the product. Therefore the views and operations may differ if you have changed the settings.
- The reproduction or reprinting of all or part of this manual without prior permission is prohibited.
- The contents of this manual are subject to change without notice.

Notes

- Google applications and service content may change without notice.
- Setting the phone to silences the ringtone and notification sounds. However, sound from video playback, music, etc., is unaffected and will continue to be heard.
- You can update the software (P.59).
- Updates for product quality improvement and operating system (OS) upgrades may be applied. Such updates or upgrades may cause applications you are using to be unusable or have unexpected errors.
- When the memory capacity of a microSD card or the product become nearly full, applications may not function correctly. If this happens, delete some of the saved data.
- For security, set a screen lock password (P.48).
- Refer to the Google Inc. terms of usage regarding services that Google provides. Also refer to the respective terms of usage for other web services.
- If this product is lost, change your password for each account via a PC to prevent other persons from using your account with Google services such as Google Talk, Gmail, Android Market, etc.

Bluetooth® Function

- This product supports a security function compliant with Bluetooth standards, but the security may not be sufficient, depending on the setting.
Concern about communication using the Bluetooth function.
- NEC de México, S.A. de C.V. is not responsible for data leak when making data communications using Bluetooth.
- You can use a headset, handsfree, audio, object push, serial port, and phonebook access on the product. The audio / video remote control may be available for audio. (Only on Bluetooth compatible devices.)
- **Bluetooth cautions**
The operating frequency band of this product is used by industrial, scientific, consumer and medical equipment including microwave ovens, premises radio stations for identifying mobile units used in manufacturing (radio stations requiring a licence), specified low power radio stations (radio stations requiring no licence) and amateur radio stations. (Hereinafter, any of the above stations is referred to as "another station").
 - 1 Before using Bluetooth with this product, confirm that "another station" is not being operated nearby.
 - 2 In the event that this product is causing radio interference with "another station", immediately change the operating frequency or stop radio wave emission by turning off the power, etc.
 - 3 If you have further questions, contact General Inquiries on the last page of this manual.

Wireless LAN

- A wireless LAN (Wi-Fi) uses radio waves for transmission, and thereby has the benefit of allowing a LAN connection anywhere in an area reachable by those radio waves. Conversely, eavesdropping by a third party or wrongful intrusion are possible if security settings are not configured. You are advised to use discretion and configure security settings before using.
- **Wireless LAN**
Do not use wireless LAN near magnetic devices such as electrical appliances or AV / OA devices, or in radio waves.
 - Magnetism or radio waves may increase noises or disable communications (especially when using a microwave oven).
 - When used near TV, radio, etc., reception interference may occur, or sound and images on the TV screen may be disturbed.
 - If there are multiple wireless LAN access points nearby and the same channel is used, search may not work correctly.
- Available channels vary depending on the country / region.
- For use in an aircraft, contact the airline beforehand.
- For use of Wi-Fi in another country / region, there may be limitations on the locations where you can use it. Before using Wi-Fi in another country / region, confirm the locally available frequencies, laws, regulations, and other conditions for the use of Wi-Fi.

• 2.4 GHz device cautions

The operating frequency band of this Wi-Fi device is used by home electrical appliances such as microwave ovens, as well as industrial, scientific and medical equipment including private radio stations on factory premises for identifying mobile units used in manufacturing lines (radio stations requiring a licence), specified low power radio stations (radio stations requiring no licence), and amateur radio stations (radio stations requiring a licence).

- 1 Before using the device, confirm that private radio stations for identifying mobile units, specified low power radio stations and amateur radio stations are not being operated nearby.
- 2 If the device causes harmful radio interference to private radio stations for identifying mobile units, immediately change the frequency band or stop use, and contact a Call Center on the Warranty Guide.
- 3 If the device causes radio interference to low power radio stations or amateur radio stations, contact a Call Center on the Warranty Guide.

Waterproof / Dustproof Function

This product is waterproof to IPX5 / IPX7 and dustproof to IP5X standards if the microUSB connector cap is closed as well as the back cover is securely attached.

- IPX5: means that this product continues to function as a phone after being sprayed from all directions with 12.5 liters of water per minute from a 6.3 mm diameter nozzle for at least 3 minutes, from a distance of approx. 3 meters.
- IPX7: The product retains phone functionality after slowly immersing in still, room-temperature tap water to a depth of 1 meter and leaving it there for 30 minutes before bringing it out of the water.
- IP5X: The product can be operated and the safety can be kept after keeping the product inside of the equipment including dust with a diameter of less than 75µm for 8 hours.
- You can talk without an umbrella in the rain (approx. 20 mm of rain in an hour).
- Do not attach / remove the back cover or do not open / close the microUSB connector cap when your hands are wet or when this product has water drops on it.
- You can rinse the product by immersing and slowly moving in tap water of room temperature filled in a bowl, or rinse it with hands under light running water from the faucet.
 - Rinse the product with the back cover securely attached while covering the external connector terminal cap to prevent it from opening.
 - Do not use a brush, sponge, soap, or detergent for washing.
 - Do not apply running water directly to the mouthpiece or earpiece / speaker.
 - Do not immerse or drop in pool water or sea water.

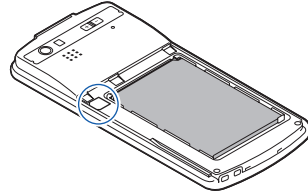
Things to keep in mind

- Before use, ensure that you securely close the microUSB connector cap and back cover so that they are completely attached. If any fine dirt (fine fibers, hairs, or sands) is between the cap / cover and the product, water could enter the inside of the product.
- Do not use the product (operate keys, etc.) under water.
- Do not spray or immerse the product in liquids other than water of room temperature, such as soap / detergent / bath powder, sea water, pool, hot spring, sand / mud.

Important notices

- If the product gets wet with the microUSB connector cap or the back cover open, the liquid may get inside the product causing electric shock or malfunction. Stop using the product, turn the power off, remove the battery pack and contact a Call Center on the Warranty Guide.
- The microUSB connector cap and the rubber packing of the back cover play an important role in maintaining waterproof / dustproof function. Do not remove or scratch them. Also, prevent dust from adhering to them. If the microUSB connector cap and the rubber packing of the back cover is damaged or deformed, contact a Call Center on the Warranty Guide.
- Do not insert sharp objects through the gap of the microUSB connector cap or back cover. Doing so may damage the rubber packing and allow water to seep in.
- If the back cover is damaged, replace it. Water may seep into the inside of the product through a damaged section causing electric shock, corrosion of the battery pack, or other malfunctions.
- Do not leave the product with water drops.
- To prevent condensation, do not bring the product from a cold place to a warm place, etc., without letting the product get back to room temperature.
- Do not apply water flow stronger than allowed (e.g., such water flow that gives you pain when applied to your skin directly from a faucet or shower head). Doing so may cause malfunction though the product is waterproof to IPX5 standard.
- Do not wash the product in a washing machine, etc.
- Accessories and options are not waterproof.
- Do not put the product in hot water, use it in a sauna or apply hot air flow to it.
- Do not leave the product on the sand at a beach. Sand might enter the mouthpiece or earpiece / speaker and result in smaller sound.
- Using the product with water or sand still in it may result in unclear sound.
- Water may enter by the microUSB connector cap or back cover even if only a tiny amount of sand lodges in them.
- Do not poke the mouthpiece or earpiece / speaker with cotton swabs or sharp objects. The waterproof / dustproof protection may deteriorate.
- This product does not float on water.
- Do not drop the product. Scratches may lead to lowered waterproof / dustproof capability.
- Do not leave water on the mouthpiece or earpiece / speaker. If water adheres to the product, the volume during a call or ringtone may be decreased or sound quality may deteriorate. In such a case, drain the water to recover the function.
- NEC de México, S.A. de C.V. does not guarantee all operations under actual use conditions. Malfunctions deemed to be caused by inappropriate operation by the customer are not covered by the warranty.

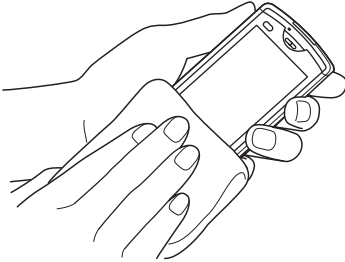
- Even if the back cover is securely attached, removing the sealing shown may result in a loss of waterproof / dustproof capability. Do not remove the sealing.



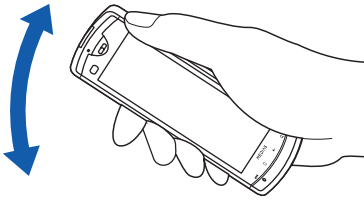
Draining water when the product gets wet

If water adheres to the mouthpiece or earpiece / speaker, the volume or sound quality may deteriorate. In such a case, drain the water following the steps below and dry the product in open air.

1 Wipe the surface with a clean dry cloth.



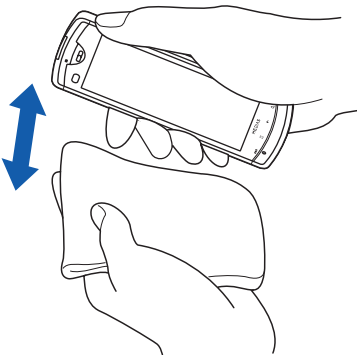
2 Securely hold the product and shake it approximately 20 times until no more water comes out.



Draining from mouthpiece or earpiece / speaker

3 Softly press a clean dry cloth to wipe off water remaining in the mouthpiece or earpiece / speaker.

Do not use a cotton swab, etc., to poke into any of the recesses.



4 Thoroughly wipe off the product with a clean dry cloth.

Any water remaining in the product may leak out after wiping off.

When charging the battery pack

Accessories and options are not waterproof / dustproof. Check the following before and after charging.

- Make sure that the product is not wet before connecting the microUSB cable.
- When the microUSB connector cap is opened for charging, close the cap securely after charging.
- Do not touch the AC charger with wet hands.
- Use the AC charger in a place not exposed to water. Do not use it in a bathroom, shower room, kitchen, washroom or other places subject to water.

Getting Started

Parts Names

- 1 Power switch
- 2 microUSB connector
- 3 Proximity / Illuminance sensor

* The display may be dark during calls if this sensor is covered. Do not put labels or stickers on the sensor.

- 4 Notification LED
- 5 Earpiece (receiver)
- 6 Display (Touch panel)
- 7 Mouthpiece / microphone

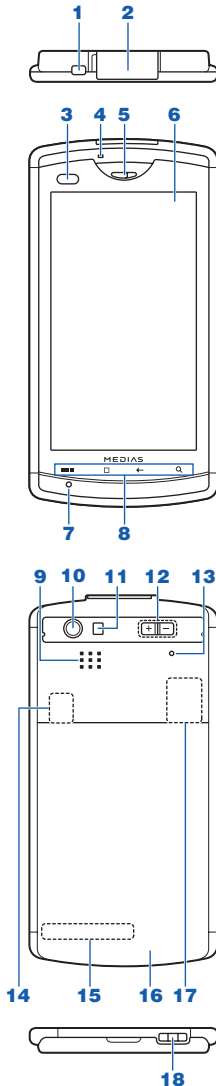
- 8 Front keys
 - ■ ■ (menu) key
 - (home) key
 - ← (back) key
 - 🔍 (search) key

- 9 Speaker
- 10 Camera
- 11 Light

- 12 + / - (volume) keys
- 13 Sub-microphone
- 14 microSD card slot
- 15 Antenna sensor

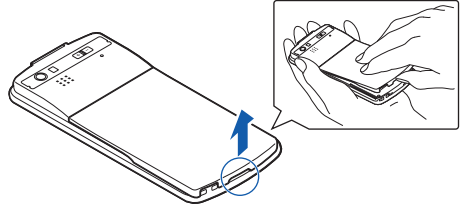
* For the best performance, do not cover these areas by your finger, etc. when using this product.

- 16 Back cover
- 17 SIM slot
- 18 Strap slot

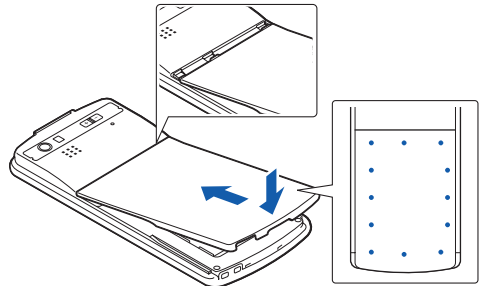


Removing / Attaching the Back Cover

To remove the back cover, hook your finger in the slot and remove in the direction shown, without too much force.



To attach the back cover, insert the tabs on top of the back cover into the slots, slide it in the direction shown, and push it down securely in the direction shown.



Securely push the areas illustrated by the dots and make sure that there is no space between the back cover and this product.

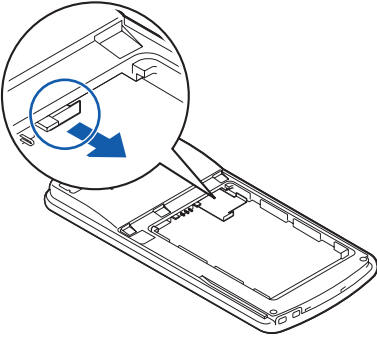
Notes

- When removing the back cover, make sure that you remove water and wipe moisture off this product.
- When attaching the back cover, make sure that no dust or dirt adheres to the back cover (especially to the rubber packing).
- Water might enter the inside of this product unless you attach the back cover securely.
- When attaching the back cover, make sure that the SIM card, the microSD card, and the battery pack are attached securely. If the SIM card or microSD card is not securely inserted, the battery pack will sit on the SIM or microSD card and create a gap between this product and the back cover when attaching the back cover. The waterproof functionality of the product might be lost as a result.

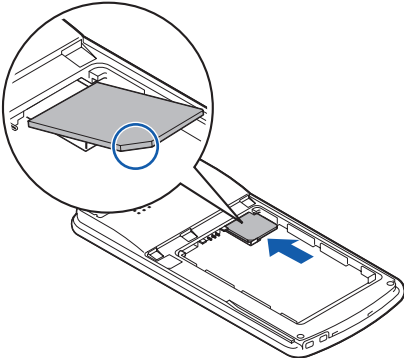
Inserting the SIM Card

The SIM card is an IC card that stores your phone numbers and other information. Some functions are not available if the SIM card is not inserted.

- 1 Hold the tab to slide the tray.



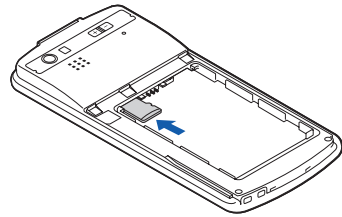
- 2 Place the SIM card on the tray with the IC surface (gold-colored) facing up and seating correctly.



- 3 Slide the tray to the end.

Inserting the microSD Card

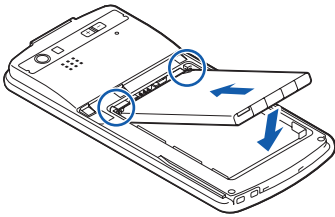
Insert the microSD card with the microSD logo side up into the microSD card slot until it is locked.



To remove the microSD card, push it as shown.

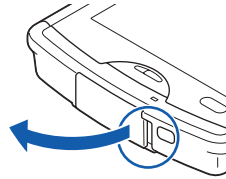
Attaching the Battery Pack

Insert in the direction by hooking the tabs on the battery pack in the slots.

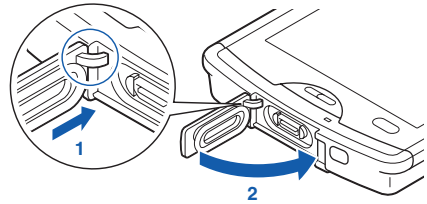


Opening / Closing the microUSB Connector Cap

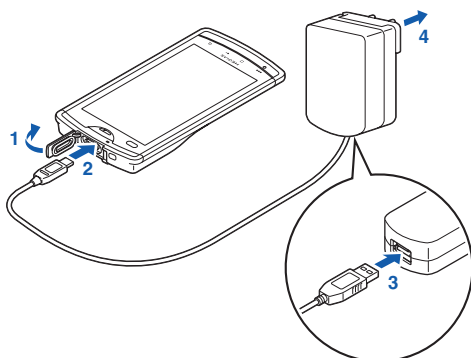
To open the microUSB connector cap, hook your finger in the slot and open the cap in the direction of the arrow.



To close the microUSB connector cap, insert the tab on the back of the cap in direction (1), and then close the cap by pressing securely in direction (2).



Charging the Battery



- 1 Open the microUSB connector cap.
- 2 Connect the microUSB plug with the supplied microUSB cable engraved side facing down with the microUSB connector.
- 3 Connect the USB plug of the cable with the supplied AC charger.
- 4 Insert the AC charger plug into the power outlet.

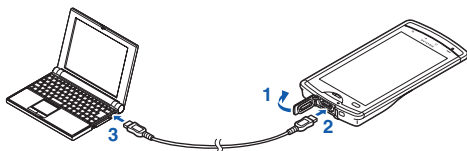
■ About the notification LED

Notification LED turns red while charging. Notification LED turns green when the battery level is over 90%, and off when charging is complete. When charging starts, such as when the battery is depleted, the notification LED may not immediately light. However, charging has started.

Note

- When connecting to the microUSB connector of this product, hold the microUSB plug straight against the connector without tilting it vertically or horizontally and insert it gently.

Charging with the PC connection



- 1 Open the microUSB connector cap.
- 2 Connect the microUSB plug with the supplied microUSB cable with engraved side facing down.
- 3 Connect the USB plug of the cable to your PC.

Basic Operation

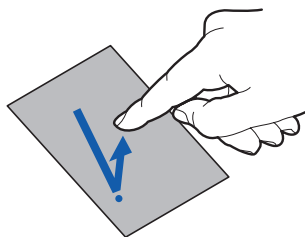
Using the front keys

- displays the menu available for the current screen.
- displays the Idle screen.
- goes back to the previous screen.
- opens "Google Search" when pressing on the Idle screen.

Using the touch panel

■ Tap

With touching and releasing your finger, the item is selected or run.

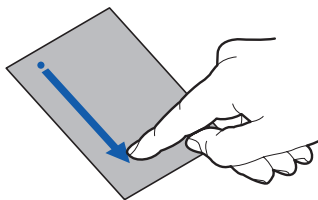


■ Touch and hold

In some screens, continuing to touch the touch panel displays a menu.

■ Slide

With sliding your finger, the screen scrolls up / down / left / right in direction.

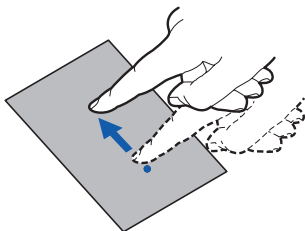


■ Drag

Quickly slide your finger while touching an item (icon, etc.) to move.

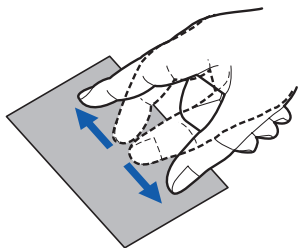
■ Flick

With quickly sliding and releasing your finger, the screen quickly scrolls in direction.



■ Pinch with two fingers

To zoom in or zoom out, touch the touch panel with two fingers, and then slide them apart or together.




Turning Power On and Off

Turning power on

Press and hold the power switch for two seconds or longer.

When the power is turned on for the first time, tap "Aceptar". The language selecting screen appears. After tapping the language, tap "Next" twice. The "Get started !!!" screen appears.

- "Basic": Basic instruction screens appears. When these instruction screens are finished, the "Get started !!!" screen appears again.
- "Applications": The instruction screens for operating an application appear. Tap an application to see that instruction. When these instruction screens are finished, the "Get started!!!" screen appears again.
- "Settings": See "Initial Settings".

To skip these screens, tap "Exit". You can start from the language selecting screen again. Tap  ▶ "Settings" ▶ "Wizard".

Turning power off

- 1 Press and hold the power switch for one second or longer.**
- 2 Tap "Power off".**
- 3 Tap "OK".**



■ Sleep mode

When this product is not operated for a specified duration of time, the display turns off and this product enters sleep mode automatically. To enter sleep mode manually, press the power switch.

Pressing the power switch quits sleep mode.

For automatically turning on sleep mode, set "Screen timeout" (P.48).

■ Screen lock

When you turn the power on or quit sleep mode, the touch panel is locked. Drag  to  to unlock the screen.

Initial Settings

When the power is first turned on, the language selecting screen appears.

- 1 **Tap the language, and then "Next".**
- 2 **Tap "Next".**
The "Get started !!!" screen appears.
- 3 **Tap "Settings".**
- 4 **Tap the item to set up.**
 - "Date and Time"
Set date and time. Also, you can select time zone, time / date display format. If you check the box of "Automatic", date and time settings are automatically adjusted.
Tap "Back" to complete "Date and Time" settings.
 - "Network"
Set Wi-Fi settings. Check the box of "Wi-Fi" to turn on the Wi-Fi. A scan for Wi-Fi networks starts automatically. Tap the name of the Wi-Fi networks that you want to connect to.
Tap "Back" to complete "Network" settings.
 - "Accounts"
Tap "Corporate" or "Google" to set the account.
Follow the screens.
 - "Email account"
Enter your email address and the password to set the account.
- 5 **Tap "Done" to complete initial settings.**
You can set these settings later. Tap [**...**], "Settings", and then select the item to set (P.47).

Access Point Settings

The access points required for connecting to the Internet are preset. You may add or change them as required.

- 1 **From the Idle screen, tap [**...**] ▶ "Settings" ▶ "Wireless & networks" ▶ "Mobile networks" ▶ "Access Point Names".**
- 2 **Tap the radio button for the access point.**

Adding an access point

- 1 **From the Idle screen, tap [**...**] ▶ "Settings" ▶ "Wireless & networks" ▶ "Mobile networks" ▶ "Access Point Names".**
- 2 **Tap [**...**] ▶ "New APN".**
- 3 **Tap "Name" ▶ enter the name of the new network profile ▶ "OK".**
- 4 **Tap "APN" ▶ enter the access point name ▶ "OK".**
- 5 **Enter any other items requested by your network operator.**
- 6 **Tap [**...**] ▶ "Save".**

Note

- Do not change "MCC" or "MNC". Otherwise, registered / added access points will no longer display on the screen. If access points no longer display due to the "MCC" and "MNC" settings being changed, you can either restore default settings or manually set the access points again.



Initializing an access point

When you initialize an access point, it returns to its default settings.

- 1 **From the Idle screen, tap [**...**] ▶ "Settings" ▶ "Wireless & networks" ▶ "Mobile networks" ▶ "Access Point Names".**
- 2 **Tap [**...**] ▶ "Reset to default".**


Wi-Fi Settings

Wi-Fi is a function that allows you to use email and the Internet, via access points for household / corporate networks or public wireless LAN services.

- 1 From the Idle screen, tap  ▶ "Settings" ▶ "Wireless & networks" ▶ "Wi-Fi settings".
- 2 Check the box of "Wi-Fi".
A scan for Wi-Fi networks begins automatically. A list of available networks appears.
If your network does not appear, tap  ▶ "Scan" to begin a scan again.
- 3 Select the Wi-Fi network.
- 4 Enter the password when requested.
- 5 Tap "Connect".

Connecting with Wi-Fi easy settings

When an access point-capable device supports "WPS", you can easily complete the required settings, including ESSID and the security method.

- 1 From the Idle screen, tap  ▶ "Settings" ▶ "Wireless & networks" ▶ "Wi-Fi settings".
- 2 Check the box of "Wi-Fi".
- 3 Tap "Wi-Fi Easy Settings" ▶ "WPS".
- 4 Tap "Push Button Control method" or "PIN method".

Push Button Control method


Searching for access points starts, so you should press the pushbutton on an access point itself or an access point's setting screen. Follow the screen prompts.

PIN method


Searching for access points starts. Follow the screen prompts. When PIN code (for WPS) appears, register the displayed number in the access point.

Adding a Wi-Fi network manually

For information on using an access point, refer to the manual for the access point.

- 1 From the Idle screen, tap  ▶ "Settings" ▶ "Wireless & networks" ▶ "Wi-Fi settings".
- 2 Check the box of "Wi-Fi".
- 3 Tap "Add Wi-Fi network".
- 4 Enter "Network SSID" and the "Security" type.
- 5 Enter additional security information as required.
- 6 Tap "Save".

Disconnecting a connected Wi-Fi network

- 1 From the Idle screen, tap  ▶ "Settings" ▶ "Wireless & networks" ▶ "Wi-Fi settings".
- 2 Tap the box of "Wi-Fi" to clear the check mark.
The password of the connected Wi-Fi network will be stored.
To delete the password, tap the connected Wi-Fi network ▶ "Forget" while the "Wi-Fi" is on.

Optional settings for Wi-Fi

Turn on "Wi-Fi" beforehand.

- 1 From the Idle screen, tap  ▶ "Settings" ▶ "Wireless & networks" ▶ "Wi-Fi settings".
- 2 Tap  ▶ an item.

Change priority

Touch and hold the name of the network to change switching priority.

Advanced

Wi-Fi sleep policy

Set Wi-Fi to enter sleep if no keys are pressed for 15 minutes after the screen dims. After entering sleep, Wi-Fi connection will be closed, but it will connect to an access point automatically. You can also set the Wi-Fi function not to enter sleep at any time, or during charging.

Connection setup of Wi-Fi

MAC address

IP address

Use static IP

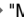

Set whether to specify a static IP address for connecting with a Wi-Fi network. To use a static IP address, "IP address", "Gateway", "Netmask", "DNS 1", and "DNS 2" need to be set.

Setting an Email Account

You can use email by setting up your own account with any of the usual service providers. Details on setting up your account should be available from your provider.


- 1 From the applications list screen, tap "Email".
- 2 Enter the email address and password ▶ "Next".
For an email account without preset provider information, settings must be completed manually. Contact your provider for details on settings.
- 3 Enter the account name.
- 4 Tap "Done".

■ To set another account


From the "Email" screen, tap  ▶ "More" ▶ "Accounts" ▶  ▶ "Add account".

Setting a Google or other account

By configuring a Google account, you can use Gmail, market, and other services.

- 1 From the Idle screen, tap  ▶ "Settings" ▶ "Accounts & sync" ▶ "Add account".
- 2 Tap the type of account.
- 3 Follow the screen prompts to configure the account.

Idle Screen

The Idle screen is the starting screen for using applications. Tap  to open the screen.

You can slide the screen to move the Idle screen to a page on the right or left.



- 1 Widgets
- 2 Application shortcuts
- 3 Dock
- 4 Launch "Phone", "Call log", and "Contacts"
- 5 Open the application list screen
- 6 Launch browser

Adding an application shortcut

- 1 Touch and hold the Idle screen.
- 2 Tap "Shortcuts".
- 3 Tap the application shortcut to add.
The shortcut is added to the Idle screen.

■ Adding a widget

In step 2, tap "Widgets" instead of "Shortcuts".

■ Moving a shortcut

- 1 From the Idle screen, touch and hold the shortcut to move.
- 2 Drag it to the desired place and release your finger.

To move a shortcut to another page, drag the shortcut to the right or left edge of the screen to change the Idle screen to the right or left page.

To move to the Dock, make space by moving the application from the Dock first.

■ Deleting a shortcut

- 1 Touch and hold the shortcut to delete.
- 2 Drag it to the trash icon at the bottom of the screen and release your finger.

Creating an application folder

- 1 Touch and hold the Idle screen.
- 2 Tap "Folders" ▶ "New folder".
- 3 Touch and hold the shortcut you want to add to a folder.
- 4 Drag the shortcut to the folder and release your finger.

You can tap a folder to open it and access shortcuts.

■ Renaming a folder


- 1 Tap the folder to rename.
- 2 Touch and hold the title bar.
- 3 Enter a title ▶ tap "OK".

■ Deleting a folder


- 1 Touch and hold the folder to delete.
- 2 Drag it to the trash icon at the bottom of the screen and release your finger.

Applications in the deleted folder will also be deleted from the Idle screen.

Setting the wallpaper

- 1 From the Idle screen, tap  ▶ "Wallpaper".
- 2 Select the item stored with the image to set.
- 3 Follow the screen to set.
 - For "Gallery", select the image to set as the wallpaper, and then drag the trimming frame to where the wallpaper will be used. Tap "Save" to set the wallpaper.
 - For "Live wallpapers", depending on the wallpaper, "Settings..." appears for changing the color, etc.

■ Changing the lock screen



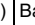


















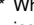
Tap  ▶ "Settings" ▶ "Location & security" ▶ "Custom Lock Screens" ▶ select the screen type ▶ "Select".

Status Bar

Notification icons for new information are displayed on the left side of the status bar, and status icons are displayed on the right side.

Status icons



Icon	Description
 ( / )	Battery level (requires charging / charging)
 *	Signal strength
 *	International roaming
	Out of service
 /  *	3G communicating / available
 /  *	GPRS communicating / available
	Airplane mode
 *	Wi-Fi connection
 / 	Bluetooth is on / connected to compatible device
	Synchronizing data
	SIM card is not inserted.
	Alarm is set.
	Speaker is on during call.
	Microphone is muted.
	Silent mode with vibration on / off
	Eco mode
	GPS is positioning.

* When a Google account is configured (synchronized), the icon appears in green. When not configured (not synchronized), the icon appears in grey.

Notification icons

When a notification icon appears, you can open the Notifications panel to check a message or event notification.

Drag the status bar downwards.

Icon	Description
	New Gmail
	New Email
	New SMS / MMS message
	Failed to send SMS / MMS
	New Voice Mail message
	New instant message
	Upcoming calendar event
	Alarm is snoozing.
	Music is playing.
	Unsecured Wi-Fi network is found.
	Newly received file via Bluetooth
	USB is connected.
	In call / on hold
	Missed call
	Data upload / send
	Data download / receive
	Application installation is completed.
	Update of installed application available
	Some notification icons are not displayed.
	Software update notification, updating
	Error / alert message
	Not available space
	Wi-Fi access point available
	VPN is connected / not connected.

■ Deleting notifications

Drag the status bar downwards, and then tap "Clear" to delete all check marked notifications, or tap the checkbox of notification to delete.

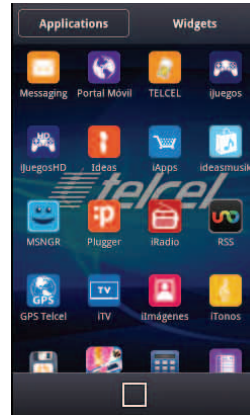
■ Closing the Notifications panel

Drag the bottom of the panel to the top.

Applications List Screen

From the Idle screen, tap .

The applications list screen appears.



■ Moving an application

You can move an application icon in the application list screen, however, some icons cannot be moved.

- 1 From the applications list screen, tap ▶ "Arrangement".
- 2 Touch and hold the application to move.
- 3 Drag it to the desired place and release your finger.
- 4 Tap "Finished" to complete.

■ Uninstalling an application

You can uninstall the application only installed by "Market".

- 1 From the applications list screen, tap ▶ "Uninstall".
- 2 Tap the application to uninstall ▶ "OK" ▶ "OK".
- 3 Tap "Finished" to complete.

■ Adding an application shortcut to the Idle screen

From the applications list screen, touch and hold the application to add.

The screen changes to the Idle screen, with the application added.

Applications list










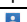




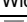





Application	Description
Messaging	(P.35)
Portal Móvil	(P.36)
TELCEL	The Telcel service menu appears.
iJuegos	The Telcel service site appears.
iJuegos HD	Opens GAMELOFT website.
Ideas	Useful applications are listed on the screen. You can switch the screen view by tapping / "list".
iApps	The Telcel service site appears.
ideasmusik	The Telcel service site appears.
MSNGR	Tap "Descargar ahora" to download the Telcel messenger.
Pluggger	The Telcel service site appears.
iRadio	The Telcel service site appears.
RSS	The RSS list appears. Tap a RSS, then the browser opens. Your Google account is necessary for RSS.
GPS Telcel	The Telcel service application starts.
iTV	The Telcel service site appears.
imágenes	The Telcel service site appears.
iTones	The Telcel service site appears.
Backup	This service allows you to back up data, which can be restored if you lose this product or accidentally erase data.
Block Breaker 3HD	Start playing the game "Block Breaker 3HD".
Calculator	Flick to left / right to switch between functions and + / - / × / ÷. You can touch and hold the formula box to copy / paste a formula. Tap "CLEAR" to delete entered digits and operators, or touch and hold to delete an entire formula.
Calendar	(P.46)
Camera	(P.43)
Clock	(P.46)
Contacts	(P.31)
Downloads	Display a log of files downloaded from the browser.
Email	(P.33)
File Manager	You can display a list of files stored on the microSD card.
Gallery	(P.44)
Gmail	(P.34)
Google Search	You can search for contacts, applications or search web pages.

Application	Description
Google+	Register with your Google account to use Google Instant Upload. You can upload pictures shot by "Camera" automatically.
Latitude	(P.42)
Maps	(P.40)
Market	(P.38)
Messenger	Register with your Google account to use Google Messenger. You can use one group chat for talking to several friends at the same time.
Music	(P.44)
Navigation	(P.41)
NFS Shift	Start playing the racing game "NFS Shift".
Phone	(P.29)
Places	(P.41)
Recorder	You can operate the voice recording. For using this application, insert the microSD card for saving the recording file.
Settings	(P.47)
SetUpWizard	The selecting language screen appears. Basic instructions or initial settings appear.
Talk	(P.36)
The Sims 3	Start playing the game "The Sims 3".
Video Camera	(P.43)
Voice Search	Spoken words are recognized, then searched in the browser by Google search.
YouTube	You can watch / upload YouTube videos.

Also, more installed applications are displayed on the Idle screen.

Application	Description
MEDIAS NAVI	Connect to the manufacturer's site "MEDIAS NAVI".
iTelcel	The Telcel service site appears.

Widgets list

Icon	Description
 Calendar (large)	Add a large sized calendar.
 Calendar (small)	Add a small sized calendar.
 Calendar (upcoming events)	Display upcoming events scheduled in the calendar.
 Clock (analog)	Add an analog clock.
 Clock (digital)	Add a digital clock.
 Clock (world)	Display the local time and the time for a specified city.
 Google Search	Add a search box.
 Google+	You can directly use a "Google+" application.
 Home screen tips	Display the help for operating the Idle screen.
 Latitude	Display the location of friends registered at "Latitude".
 Market	Display information for Android Market.
 Music	Display a music control panel.
 My Conversations	Add the contacts.
 My Message Widget	Open messages and make a call.
 Notification Widget	Display notifications.
 Picture frame	Add an image.
 Power Control	Tap the icon to turn it on / off.
 Traffic	You can set locations that will in real-time, update to show you how long it may take you to get there depending on your current location.
 Weather Widget	Display the weather forecast with setting.
 YouTube	Search and view YouTube.

Task Manager

The Task manager shows the running applications and allows you to switch tasks. It also allows you to quit applications.

1 Touch and hold .

The "Running applications" screen appears.

2 Tap the application to display.

3 Tap "x", or "Close all" ► "Yes".

Note

- Running more than one application may consume more energy. Doing so may cause applications to be terminated forcibly or slow down.

Text Entry

Tap a text box on the screen to display the on screen keyboard.

■ QWERTY keyboard

This keyboard uses a PC keyboard layout.



■ 10-key keyboard

Depending on the screen, this appears to enter only numbers such as phone number.

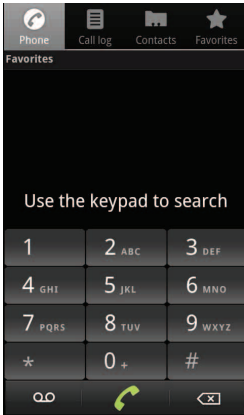


Note

- For keyboard settings, from the Idle screen, tap **☰** ▶ "Settings" ▶ "Language & keyboard" ▶ "XT9 Text Input" (P.49).

Calling

Making a Call



- 1 From the Idle screen, tap .
- 2 Enter the phone number.
If you enter a wrong number, tap to delete the number.
- 3 Tap to start the call.
- 4 To finish the call, tap .

■ Entering a push tone (pause)

In step 2, tap ▶ "Add 2-sec pause" / "Add wait".

■ Using the Speed dial

You can register a phone number to find easily from the speed dial list.

From the "Phone" screen, tap ▶ "Speed dial list" ▶ select the registered phone number. To register a number in the list, tap "Speed dial is not set" ▶ select a contact.

Note

- If you have set PIN1 code entry and Airplane mode, you need to enter the PIN1 code to make an emergency call.
For information about PIN1 code, see P.53.

Operations during a call

■ Adjusting the call volume

Press the + / - (volume) keys.

■ Putting the other party on the speaker

Tap "Speaker".

■ Muting your voice to the other party

Tap "Mute".



■ Using the Bluetooth function

Tap "Bluetooth" when connected to a Bluetooth device compatible with your headset, etc.

Making an international call

- 1 From the Idle screen, tap .
- 2 Touch and hold "0" to enter "+".
- 3 Enter the country / region code ▶ area code (city code) ▶ recipient's phone number.
If the area code begins with "0", omit "0". However, "0" may be required for calling some countries or areas, such as Italy.
- 4 Tap .
- 5 To finish the call, tap .

Receiving a Call

- 1 When a call is received, drag  to the right.
- 2 When the call is finished, tap .

Declining a call

Drag  to the left.

Call forwarding

The Call Forwarding service forwards a call to a preset forwarding number if you do not answer the call within the preset ring time, or if the product is outside of the service area or is powered off.

From the Idle screen, tap  ▶ "Settings" ▶ "Call settings" ▶ "Call forwarding" ▶ select any item.

If you do not answer an incoming call, the call is stored as a missed call in the log and the missed call icon appears in the status bar.


Note

- For setting each number of the item, contact your network operator or service provider.

Voicemail

When the product receives a call, the call is connected to the Voicemail service center if not answered. The caller records a message, and you are notified that there is a message at the Voicemail service center, then you can play back the message.



For more details about Voicemail service, contact your network operator or service provider.

- 1 From the Idle screen,  ▶ "Settings" ▶ "Call settings" ▶ "Voicemail settings".
- 2 Tap "Voicemail number <not set>" ▶ enter the Voicemail number ▶ "OK" ▶ "OK".

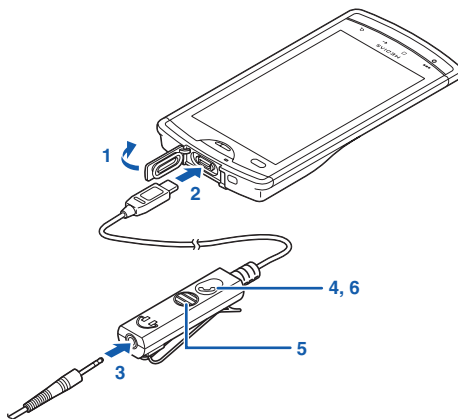
For the Voicemail number, contact your network operator or service provider.

When the product receives a call, the call is connected to the Voicemail service center if not answered. The caller records a message, and you are notified that there is a message at the Voicemail service center, then you can play back the message.

Notes

- Calls you are unable to answer after starting the Voicemail service are recorded as "Missed call" in "Call log", and  appears in the status bar.
-  (indicating the number of messages) appears in the status bar when a message is recorded.
- Depending on your using service provider, this function could be not usable.

Using the earphone cable (hands-free phone)



- 1 Open the microUSB connector cap.
- 2 Connect the microUSB plug of the supplied earphone cable with engraved side facing down with the microUSB connector.
- 3 Connect the supplied earphones' plug with the earphone cable.
- 4 To answer an incoming call, press the button of the earphone cable.
- 5 Talk using the microphone of the earphone cable.
- 6 To finish the call, press the button of the earphone cable.

Call Log

You can check the outgoing / incoming calls history.

1 From the Idle screen, tap .

2 Tap "Call log".

: Outgoing call


: Incoming call

: Missed call

■ Showing "Call time"

Tap  ▶ "View call time".

■ Showing the categorized screen


Tap  ▶ "Category view".

■ Adding a phone number from "Call log" to "Contacts"

Touch and hold the entry you want to add ▶ "Add to contacts" ▶ "Create new contact" ▶ enter required items ▶ "Done".

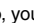

- If multiple accounts are registered, select one from the accounts.
- If you want to select a contact already registered, just select the contact.

■ Deleting the log

Tap  ▶ "Clear call log" ▶ "OK".

All logs will be deleted.

To delete individual entries, touch and hold an entry to delete and then tap "Remove from call log".

Also, you can delete by tapping  ▶ "Delete" ▶ select logs ▶  ▶ "Delete".


Contacts (Phonebook)

You can add data such as phone numbers and email addresses. You can easily make a call from "Contacts".


From the application list screen, tap "Contacts".

■ Searching a contact


If a lot of contacts exist, you can find a particular contact easily by key search.

From the "Contacts" screen, tap  ▶ "Search" ▶ enter for searching.

■ Setting the "Contacts" screen

From the "Contacts" screen, tap  ▶ "Display options". Select the item to change. To complete the setting, tap "Done".

Creating a contact

1 From the "Contacts" screen, tap  ▶ "New contact".

2 Select the account.


3 Enter required items such as name, number, and email address.

4 Tap "Done" to complete.


■ Importing contacts from the SD card / SIM card

Tap  ▶ "Import/Export" ▶ "Import from SD card" / "Import from SIM card" ▶ select the account.

■ Exporting contacts to the SD card / SIM card

Tap  ▶ "Import/Export" ▶ "Export to SD card" / "Export to SIM card" ▶ "OK".


■ Sharing visible contacts

Tap  ▶ "Import/Export" ▶ "Share visible contacts" ▶ select the application used for sharing.

■ Deleting a contact

1 Tap  ▶ "More" ▶ "Delete contacts".

2 Check the box of the contact to delete.

To select all the contacts, tap  ▶ "Select all".

3 Tap  ▶ "Delete contacts" ▶ "Delete".


You can also delete the contact from the account.

After step 1, tap "Delete from account" ▶ follow the screen prompts.


Displaying the profile screen

From the "Contacts" screen, tap the name of the contact to display.


■ Editing a contact

Tap the name of the contact to edit ▶  ▶ "Edit contact" ▶ edit items ▶ "Done" to complete.

■ Sharing a contact



Tap the name of the contact to share ▶  ▶ "Share" ▶ select an application to use for sharing the contact ▶ follow the screen prompts.


■ Sending a contact

Tap the name of the contact to send, and then tap  ▶ "Send contact" ▶ enter the address and message ▶ "Send".

■ Merging duplicate contact information


If the same contact information (name, etc.) is registered several times, you can merge the contact information together.

Tap a contact ▶  ▶ "Edit contact" ▶  ▶ "Join" ▶ select a contact to join ▶ "Done".

To separate the connected contacts, tap  ▶ "Separate" ▶ "OK".

Favorites

On the "Phone" screen, a list of contacts set as "Favorites" is displayed for easy searching. You can also display the list on the "Favorites" screen.


- 1 From the "Contacts" screen, tap the name of the contact to set as "Favorites".
- 2 Tap .

Email

By setting an email account, you can send and receive emails in the same way as your PC. For more details on setting the account, see P.23.

From the application list screen, tap "Email".

The "Inbox" screen appears. Any received email is displayed in the "Inbox".

To refresh the "Inbox", tap  and then "Refresh".

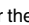
Displaying email

From the "Inbox" screen, tap an email.



■ Replying to email

Tap "Reply" / "Reply all", enter a message, and then "Send".

■ Forwarding email


Tap , "Forward", enter the forwarding email address in "To", and then "Send".

■ Searching email

From the "Inbox" screen, tap  ▶ "Search" ▶ enter a keyword ▶ .

■ Deleting email


Tap "Delete".


To delete all received email, from the "Inbox" screen, tap  ▶ "Select All" ▶ "Delete".

Creating and sending email

1 From the "Inbox" screen, tap  ▶ "Compose".

2 Enter each item.

To add a Cc or Bcc, tap  ▶ "Add Cc/Bcc".


To add an attachment, tap  ▶ "More" ▶ "Add attachment".

3 Tap "Send".

Opening mailboxes

From the "Inbox" screen, tap  ▶ "Folders".

Changing email settings

1 From the "Inbox" screen, tap  ▶ "More" ▶ "Account settings".

2 Tap the item for setting a notification for a new email.

- "Email notifications"; sets whether a notification appears in the status bar for a new email.
- "Select ringtone"; sets a ringtone for notifying of a new email.
- "Vibrate"; sets the vibration for when there is a notification of a new email.

■ Setting automatic check of your email


In step 2, "Inbox check frequency" ▶ set the interval at which to automatically check.

Gmail

Gmail is an email service provided by Google. You can use Gmail to send and receive email. For more details on setting a Google account, see P.23.

From the application list screen, tap "Gmail".


The "Inbox" screen appears. Any received Gmail is displayed in the "Inbox".

To refresh the "Inbox", tap  and then "Refresh".



Displaying Gmail

From the "Inbox" screen, tap a message thread.


■ Switching accounts

From the "Inbox" screen, tap  ▶ "Accounts" ▶ the account to display. To add another account, tap "Add account" and follow the screen to set the other account.



■ Searching Gmail

From the "Inbox" screen, tap  ▶ "Search" ▶ enter a keyword ▶ .

■ Displaying Gmail by label

From the "Inbox" screen, tap  ▶ "Go to labels" ▶ type of label to display. To label an email, see "Managing message threads".

■ Replaying to Gmail

Tap  ▶ enter a message ▶ .

To reply all members, tap "Reply" ▶ "Reply All". For more details about sending, refer to "Changing Gmail settings".

■ Forwarding Gmail

Tap  ▶ "Reply" ▶ "Forward" ▶ enter the forwarding email address in "To" ▶ . For more details about sending, refer to "Changing Gmail settings".

■ Deleting Gmail

Tap "Delete" when the message is displayed.

Note


- In Gmail, email is displayed grouped into a message thread according to reply. If newly arrived emails are replies to an existing email, they will be grouped into the same message thread. A new thread is created for newly created email and changes of subject name.

Creating and sending Gmail

1 From the "Inbox" screen, tap  ▶ "Compose".

2 Enter each item.

To add a Cc or Bcc, tap  ▶ "Add Cc/Bcc".

To add an attachment, tap  ▶ "Attach".

3 Tap .

■ Saving the entered Gmail as draft

Tap  ▶ "Save draft".


Managing message threads

1 From the "Inbox" screen, touch and hold a thread.

2 Select any item.

- "Read"; opens a message thread.
- "Archive"; stores message threads. Stored message threads are not displayed in the inbox.
- "Mute"; hides message threads.
- "Mark read" / "Mark unread"; designates a message thread as read / unread.
- "Delete"; deletes a message thread.
- "Add star" / "Remove star"; assigns / removes a star from a message thread.
- "Change labels"; adds or changes the label of a message thread.
- "Report spam"; displays the report of deleted thread by Google as spam.
- "Help"; displays the help page.


■ Showing archived or muted message threads

From the "Inbox" screen, tap  ▶ "Go to labels" ▶ "All Mail".

Note

- Labels cannot be created on this product. Create labels on the Gmail website.

Changing Gmail settings

1 From the "Inbox" screen, tap  ▶ "More" ▶ "Settings".

2 Tap the item to set.

Messaging (SMS / MMS)

You can send and receive text and multimedia messages with a cell phone number as the address.

You can also send with an email address.


From the application list screen, tap "Messaging".

The message screen appears.

Creating and sending Message


1 From the message screen, tap "New message".

2 Enter the number in "To" and the message in "Type to Compose".

To enter more than one recipient, enter ";" or "," between each phone number, or tap  after each phone number entered.


3 Tap "Send".

■ Attaching a file for the sending message

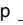
Before step 3, tap  select item for attaching and follow screens.

Displaying sent / received Message


Tap a message thread.

To search for a message to display, tap  "Search".

■ Replying to Message

From displaying the received message to reply, tap  and "Reply".

■ Forwarding Message

From displaying the received message to forward, tap  and "Forward".

■ Adding the received number to "Contacts"

Touch and hold a received message, and tap "OK" to add. Then tap "Create new contact" or tap a contact.



Displaying the Message conversation

1 From the message screen, tap  "Conversation view".


2 Tap the message thread to display.

You can send Message from this screen.




■ Deleting all messages of the thread

Touch and hold the thread to delete  "Delete"  "Delete".


Displaying the folder list

From the message screen, tap  "Folder view".

■ Creating a new folder

From the message screen in folder view, tap  "New folder"  enter the name for the new folder  "OK".


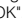
Moving Message

1 From the message screen, tap the folder  "Move".


2 Check the box of the message to move.

3 Tap  "Move"  select a folder to move to.

Note




- If you move a message to the "Security" folder, you can avoid accidental deleting and protect. From the message screen, tap the "Security" folder  set the password  "OK".

Deleting Message



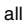



1 From the message screen in folder view, tap any folder  a message to delete.

2 Tap  "Delete"  "OK".


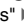
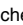


■ Deleting all messages from the sender

From the "Inbox" screen, touch and hold the message to delete  "Delete"  "Delete all messages from the sender"  "OK".

■ Deleting all messages from the folder

From the message screen, tap the folder  "Delete". Tap  "Select all"  "Delete"  "OK", or check the boxes of messages to delete  "Delete"  "OK".

■ Setting automatic deletion for Message

From the message screen, tap  "Settings"  check the box of "Delete old messages"  "Text message limit"  "+" or "-" for a messages limit  "Set".

Changing Message settings

1 From the message screen, tap  "Settings".

2 Tap the item to set.

Google Talk

Google Talk is an online instant messaging service by Google. For setting the Google account, see P.23.

1 From the application list screen, tap "Talk".

2 Tap a chat member.

If there is no chat member, add a member. Tap
 ▶ "Add friends" ▶ enter an email address ▶ "Send invitation" ▶ wait until your friend's accepting.

3 Enter a message and tap "Send".

4 To finish, tap ▶ "End chat".

■ Switching chat members

Tap ▶ "Switch chats" ▶ a chat member.

■ Chatting with two or more members

Tap ▶ "Add to chat" ▶ chat members.

■ Changing Google Talk settings

Tap ▶ "Settings" ▶ the item to set.

Browser

You can browse web pages using the browser. You can browse sites via packet communication and Wi-Fi also.

1 Tap on the Idle screen.

2 Tap the address bar.

3 Enter an URL or keywords.

Once you enter an URL or keywords in the address bar, a list of candidates appears.

4 Tap or the web page you want to display from the list of candidates.

If you tap ▶ "More" ▶ "More actions", you can select a following item for an action.

- "Set as homepage"
- "Page info"
- "Share page": Select an application to share by.
- "Enter fullscreen"
- "Find on page": Enter the search text ▶ tap / ▶ .

■ Using the voice search

Instead of step 3, tap and clearly speak the search words into the microphone.

■ Opening a new browser window

Tap ▶ "New window".

■ Switching between windows

If more than one window opens, tap ▶ "Windows" ▶ web page to display.

■ Moving to the previous web page

Tap to return to the previous page.

■ Moving the web page by Gesture

Tap ▶ "More" ▶ "Gesture" ▶ "Add gesture" ▶ select the type for using gesture ▶ draw for gesture ▶ "Done".

■ Copying text contents

1 Tap ▶ "More" ▶ "Select text".

2 Drag the text to copy.

3 Drag to the start position and to end position.

4 Tap the selected text.

The copied text can be pasted into other applications, such as a browser search box or email. Touch and hold the text box to paste, and then tap "Paste".


■ Saving images appearing in web pages


Touch and hold an image to save ▶ "Save image". You can see the saved image from the list shown by tapping ▶ "More" ▶ "Downloads".


Using bookmarks

Bookmarking a web page allows you to quickly access that web page.

■ Adding a bookmark


From the web page to add, tap  ▶ "Bookmarks" ▶ "Add" ▶ check / change the bookmark name ▶ "OK".

To add a bookmark by entering address, tap  ▶ "Add new bookmark" from the "Bookmarks" screen.


You can also add a bookmark from the "Most visited" or "History" list. Tap "Most visited" or "History" ▶  of the item to add.

■ Displaying web pages added to bookmarks

From the web page, tap  ▶ "Bookmarks" ▶ a bookmarked page to display.

You can also change the view of bookmarks to the list by tapping  ▶ "List view".

■ Deleting all bookmarks

From the "Bookmarks" screen, tap  ▶ "Delete all bookmarks" ▶ "OK".

Changing browser settings

- 1 From a web page, tap  ▶ "More" ▶ "Settings".
- 2 Tap the item to set.

Installing Applications

1 From the application list screen, tap "Market".

At the first time to open Android Market, tap "Accept" after confirming the terms of service.

2 Tap an application to install.

3 Tap "Download" for free, or the monetary amount box for purchasing.

If you purchase at the first time, you need to set payment information (Google Checkout).


4 Tap "Accept & download" or "Accept & buy".

Downloading starts. After downloading completes, install starts.

■ Requesting refund

You can request a refund within a stipulated time after purchase. The application will be deleted, and you will not be charged for it.

You may obtain only one refund for each application. If you have previously requested and obtained a refund for a purchased application, you cannot obtain another refund for that same application after you purchase it again.

For information on payment methods and refund terms, from the market screen, tap  ▶ "Help".

Note

- For an initial purchase by credit card, you must enter information about the credit card to use with Google Checkout. Google Checkout is a fast, secure, and convenient method for purchasing applications. For more information on Google Checkout, refer to <http://checkout.google.com/>.

Deleting applications

1 From the "Market" screen, tap ▶ "My Apps".

2 Tap the application to delete ▶ "Uninstall" ▶ "OK".

Changing Android Market settings

1 From the "Market" screen, tap ▶ "Settings".


2 Tap the item to set.

You can use the GPS function and compatible software to check your present location, find directions to a destination, etc.

- GPS is operated by the U.S. Department of Defense. GPS signals are subject to control adjustments (reduced accuracy, stoppage of signal, etc.) at the discretion of the Department.
- Some wireless communications products (mobile phones, data detectors, etc.) block satellite signals and cause instability of signal reception.
- The display of some maps based on location information (latitude / longitude information) may be inaccurate due to the regulations of some countries or regions.
- You may find it impossible or difficult to receive a GPS signal in the following conditions because GPS uses radio waves from a satellite.
 - Inside or immediately underneath a building
 - In a basement or tunnel, underground, or underwater
 - In a bag or box
 - In a built-up or residential area
 - In or under thick trees
 - Near a high-voltage cable
 - Inside cars or trains
 - In heavy rain, snow, or other bad weather
 - When there are obstructions (people or objects) near the product
 - When the GPS antenna section is covered by a hand etc.

Enabling the Location Service

To use the Location Service, you must enable the GPS function beforehand. You can also configure your product to find approximate location information based on information from Wi-Fi and mobile network base stations.


1 From the Idle screen, tap  ▶ "Settings" ▶ "Location & security".

2 Check the box of "Use GPS satellites".

Note

- Google Location Service gathers location information in a manner not enabling pinpointing of individuals. Gathering of location information occurs regardless of whether an application is launched.

■ Enabling wireless network

1 From the Idle screen, tap  ▶ "Settings" ▶ "Location & security".

2 Check the box of "Use wireless networks" ▶ "Agree".

Google Maps

You can use Google Maps display your current location, search other locations, search directions, etc. To use Google Maps, a 3G / GPRS or Wi-Fi connection enabling data communication is required. Set the Location Service on beforehand. (P.39)

From the application list screen, tap "Maps".

The first time you launch this application, a screen presenting new map features appears. Tap "OK".


■ Zooming in / out on the map


- Zoom in: Tap "+", slide two of your fingers apart, or double-tap (tap twice).
- Zoom out: Tap "-", slide two of your fingers together, or tap with your two fingers.

■ Displaying the current location


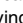
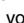
Tap .

■ Searching for a location

Enter a location in "Search Maps"  or tap a search candidate.

With tapping , you can also use Voice searching.

You can save the searched location as "Starred Places"


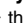
by tapping . After saving, you can display the starred place later by tapping  . List of "Starred Places" appears. You can also display a recently searched location by tapping "Recent".

■ Viewing Street View

Touch and hold a point to view   "Street view".


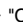
Some regions are not supported for Street View.

■ Displaying layers

Tap   the item to display information such as traffic conditions overlaid on a map, or switch to an aerial photograph.

Traffic conditions and railway lines are provided for limited regions.

■ Clearing a map

Tap   "Clear Map" to clear all displayed layers and directions search results.

Looking up directions

You can view directions to your destination.

**1 While viewing a map, tap              **

Navigation

You can use audio guidance to the destination.

1 From the application list screen, tap "Navigation".


The first time you launch this application, a description of Google Maps Navigation is displayed. Tap "Accept".

2 Select "Walking" or "Driving".

3 Select any item.

- "Speak Destination"; enters your destination by voice.
- "Type Destination"; enters your destination by text entry.
- "Contacts"; enters your destination from an address registered in your contacts.
- "Starred Places"; enters your destination from a location with a star added in Google Maps.




4 Tap ▶ "Mute" / "Unmute" for setting the voice guidance.

To display the route information, tap  ▶ "Route Info".

■ Exiting navigation

Tap  ▶ "Exit Navigation".

Notes

- You can use the voice guidance. Tap "Install" ▶ follow the screen prompts to install the application when the message appears.
- On the navigation screen, following icons appear.
 - ; shows a list of routes.
 - ; appears after selecting a route. Tap this icon to switch the screen to street view.
 - ; appears after switching to street view. Tap this icon to change the view at street view.

Places

You can search for shops and facilities near your current location and display information. Shops and other locations that were found can be displayed in the Google Maps screen.

1 From the application list screen, tap "Places".


2 Tap a category to search.

3 Tap an item to display.

Latitude

Google Latitude enables you and your friends to check each others' locations on maps and share status messages with each other. It also enables you to send email and SMS messages, make calls and search for directions to friends' locations.


Location information is not shared automatically. You must first join Latitude and then invite friends to provide their locations, or accept invitations from friends to share your location.

For more information about Latitude, tap  from the "Latitude" screen ▶ "Help".

1 From the application list screen, tap "Latitude".

2 Tap "Share location with family or friends" ▶ "Agree & Continue".

3 Tap a member to display the location.

If there is no member, add a member. Tap  ▶ "Add friends" ▶ "Select from Contacts" or "Add via email address" ▶ follow screens.

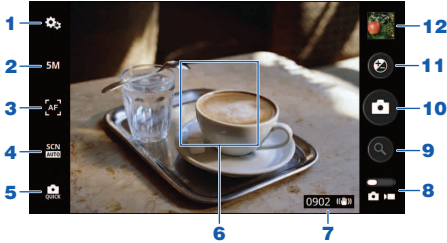
To refresh the screen, tap  ▶ "Refresh friends".

Multimedia

Camera


Photos and videos shot on the camera are automatically saved to the microSD card. If you do not have a microSD card inserted, you cannot start shooting.

Shooting photos



- "Other Settings"**
Configures the settings for light, image quality, antishake, self timer, etc.
- "Size" (image size)**
- "Auto focus"**
Configures focus settings.
- "Scene"**
- "Camera Mode"**
 - "Standard"
 - "Quick Shot": Shoots rapidly in a short timeframe.
 - "Multi Shot": Shoots repeatedly at one time. You can also set the interval time and number of pictures to shoot. To set "Multi Shot", tap "MultiShot Settings" ▶ set "Interval" and "Piece" ▶ "OK".
- Focus frame**
- Number of remaining shots / Antishake icon / Location information acquisition status**
- Photo / video**
- Zoom***
- Shutter**
- Brightness**
- Gallery**

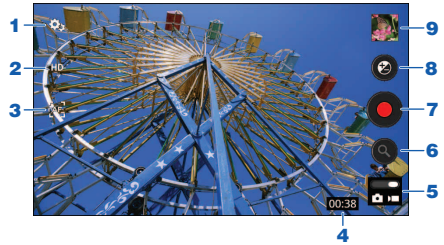
* Depending on the "Size" setting, this may not be activated.

- From the application list screen, tap "Camera".**
- Focus the camera on the subject.**
- Tap  to shoot.**



■ Hiding icons

Tap  ▶ "Hide icons".

Shooting videos



- "Other Settings"**
Configures the settings for light, image quality, etc.
 - "Size"**
 - "Auto focus"**
 - Remaining shooting time**
 - Photo / video**
 - Zoom***
 - Recording start / stop**
 - Brightness**
 - Gallery**
- * Depending on the "Size" setting, this may not be activated.

- From the application list screen, tap "Video Camera".**
- Point the camera at the subject.**
- Tap  to start shooting.**
- Tap  to stop shooting.**

■ Hiding icons

Tap  ▶ "Hide icons".

Gallery

You can display and play the photos or videos saved on the microSD card.










1 From the application list screen, tap "Gallery".

2 Tap a category.


3 Tap a photo / video to display or play.

Touch and hold a category, photo, or video to send data by Bluetooth communication or mail, delete data, check details, etc.


If you tap "Menu" ▶ "More", select an item for the following action.

- "Details"; shows details
- "Set as"; sets as the contact icon or wallpaper.
- "Edit picture"; edits using icons,  /  (rotating),  (cropping),  (sizing),  (reflection),  (brightness),  (white balance),  (drawing),  (adding icons).
- "Crop"; trims the picture.
- "Settings"; sets for general or slideshow.
- "Exif Info"; shows exif properties.
- "Rotate Left"
- "Rotate Right"

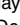
■ Slideshow

From the displaying picture, tap  twice ▶ "Slideshow". Slideshow starts with pictures in the same folder.


■ Sharing files

From the thumbnail list screen of "Gallery", touch and hold . Check boxes are displayed for each file. Check the boxes to share ▶ tap "Share" ▶ select an application for sharing ▶ follow screens.

■ Deleting files

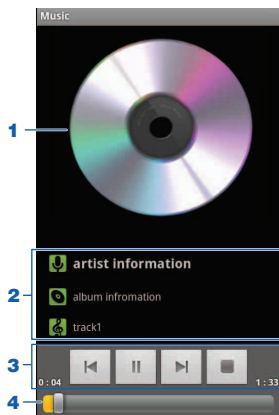
From the thumbnail list screen of "Gallery", touch and hold . Check boxes are displayed for each file. Check the boxes to delete ▶ tap "Delete" ▶ "Confirm Delete".

■ Arranging the photos by shooting period

From the thumbnail list screen of "Gallery", tap .

Music Player

You can play music files saved on the microSD card.



1 Album cover image

2 Song details

You can touch and hold to search related information for each application.


3 Go back to the beginning or previous song / pause / go to the next song / stop

4 Specify playback position


1 From the application list screen, tap "Music".

The category lists screen appears.

2 Tap a category.

To enter a text searching, tap  ▶ "Search" ▶ enter a text.


3 Tap an item and song to start playback.


To display the list including a playing song, tap  ▶ "Library".

■ Song list / shuffle play / repeat play


From the "Music" playing screen, tap the image to display following icons.

 ; Displays a song list of the current album.


 ; Switches shuffle play mode to on / off.

 ; Switches repeat play mode to Repeat all / Repeat current / off.


■ Using party shuffle mode

You can play several music files selected in random order from all the songs. Tap  ▶ "Party shuffle".

■ Setting a playing song as a ringtone


From the "Music" playing screen, tap  ▶ "Use as ringtone".

■ Deleting a playing song

From the "Music" playing screen, tap  ▶ "Delete" ▶ "OK".

Using playlist

- 1 From the category lists screen, touch and hold the artist name, album name, or song name ▶ "Add to playlist".

You can also add the playing song to the playlist by tapping  ▶ "Add to playlist" during playback.

- 2 Tap "Now playing list", "New", or a created playlist.

You can add all songs in the selected item (artist or album).

■ Renaming a playlist

From the category lists screen, tap "Playlists" ▶ touch and hold the playlist to rename ▶ "Rename" ▶ enter a playlist name ▶ "Save".

■ Deleting a playlist


From the category lists screen, tap "Playlists" ▶ touch and hold the playlist to delete ▶ "Delete" ▶ "OK". You cannot delete playlists from "Recently added".

■ Deleting a song from a playlist

From the category lists screen, tap "Playlists" ▶ a playlist ▶ touch and hold the song to delete ▶ "Remove from playlist".

For using the supplied earphones to listen, connect via the supplied earphone cable. (P.30)






Notes

- To use the supplied earphones to listen, connect via the supplied earphone cable. (P.30)
- To display the properties of a playing song, from the "Music" playing screen, tap  ▶ "Properties".


Clock / Calendar

Clock

From the application list screen, tap "Clock".
Time, date, and the weather forecast are displayed.

Icons	Descriptions
	Darkening the screen
	Setting the alarm
	Starting a slideshow
	Starting the "Music" application and playing music
	Going back to the Idle screen


Setting the alarm

- 1 Tap .
The alarm list screen appears.
- 2 Tap "Add alarm".
- 3 Set the alarm time ▶ "Set".
- 4 Check or select an item to set.
 - "Turn alarm on": Set the alarm to operate.
 - "Time": Set the alarm time.
 - "Repeat": Set the alarm to sound at the same time on each day.
 - "Ringtone": Set the alarm sound.
 - "Label": Assign a label to the set alarm.
- 5 Tap "Done".

■ Stopping the alarm

Tap "Dismiss". If you tap "Snooze", the alarm sounds again according to the "Snooze duration" setting.

■ General setting for the alarm

From the alarm list screen, tap  ▶ "Settings". You can set following items.

- "Alarm in silent mode"
- "Alarm volume"
- "Snooze duration"
- "Volume"


Calendar

You can manage your schedule by synchronizing with an online calendar provided by Google or other service. You must configure a Google account beforehand. (P.23)

From the application list screen, "Calendar".

The "Calendar" screen appears.

■ Switching the calendar display

Tap  ▶ "Day", "Week", or "Month".


Creating a schedule

- 1 From the "Calendar" screen, touch and hold the date ▶ "New event".
- 2 Set each item ▶ "Done".


■ Checking the agenda

Tap  ▶ "Agenda".



■ Changing / deleting events

Tap an event to change / delete ▶  ▶ "Edit event" / "Delete event".

Changing calendar settings

- 1 From the "Calendar" screen, tap  ▶ "More" ▶ "Settings".
- 2 Change settings.

■ Synchronizing with Google or other calendar

Tap  ▶ "More" ▶ "Calendars" ▶ the account of the calendar ▶  to synchronize / display ▶ "OK".

Settings

Setting List

To display the "Settings" screen, tap **☰** | ▶
"Settings" from the Idle screen.

Wireless & networks

Airplane mode

All wireless functions such as phone calls, packet communication are disabled.

Wi-Fi

Wi-Fi settings (P.22)

Wi-Fi

Network notification

Set whether to notify when an open Wi-Fi network is detected.

Wi-Fi Easy Settings (P.22)

Add Wi-Fi network (P.22)

Bluetooth (P.51)

Bluetooth settings (P.52)

Bluetooth (P.51)

Device name

When Bluetooth communication is performed, change the name displayed on the partner Bluetooth device.

Discoverable

Scan for devices

Proxy settings

Tethering & portable hotspot

USB tethering

Turn on / off. You can tether to your PC using a miniUSB cable to share the Internet connection.

Portable Wi-Fi hotspot

Turn on / off. You can share the internet connection with one or more PCs, or other devices.

Portable Wi-Fi hotspot settings

Help

VPN settings (P.52)

Mobile networks (P.51)

Data enabled

To ensure immediate data connection after checking the box of "Data enabled", restart this product.

Data roaming (P.51)

Network Mode (P.51)

Access Point Names (P.21) (P.51)

Network operators (P.51)

Call settings

Fixed Dialing Numbers

When checking the box of "FDN activation", you can call only numbers registered on FDN (Fixed Dialing Numbers). This function can be used depending on the service provider.

Service Numbers

Voicemail service

Voicemail settings (P.30)

DTMF Tones

Dialpad Tones

Speed dial (P.29)

Call forwarding (P.30)

Additional settings

Caller ID

Setting the display this number for outgoing calls

Call Waiting

When there is a second incoming call while you are in call, this service notifies you with a ringtone so you can place that first call on hold to answer. You can also put a current call on hold and place a call to another party.

Depending on the service provider you are using, this function may not be available.

Ringtones and sounds

Ring

Vibrate


Silent

Tap "OK" to set this product not to emit sound, etc., for etiquette when in a public or similar place.

Alternatively, press and hold the power switch for one second or longer, and tap "Silent mode".

Ring and vibrate

Airplane

Select one of the profile above or you can create your own profile by tapping  > "New". Edit the following items.

- "Name"
- "Alert style"
- "Audible selection"
- "Volume"
- "Ringtone"
- "Message alert"
- "Email alert"
- "Calendar alert"
- "Alarm alert"

* Set the operation sound when selecting from a menu.

Display

Brightness

Check the box of "Automatic brightness" to detect surrounding brightness and adjust automatically.



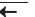

Auto-rotate screen

Set whether the display switches automatically according to the orientation of this product.

Animation

Set the animation to display if the screen switches.

Screen timeout

Set the time until the screen back light turns off. About five seconds after the backlight turns off, you can tap     to turn it on again.

Note

- When the battery level becomes low, "Brightness" automatically sets to its minimum to conserve power.

eco mode

eco mode

If you set "AUTO", eco mode turns on automatically according to the battery level set with "Auto setting".

eco mode option settings

When you set "eco mode" to "ON" or "AUTO", you can set the below items.

Brightness

Screen timeout

Turn off Bluetooth

Turn off Wi-Fi

Unuse GPS satellites

Stop sync

Stop live wallpapers

Auto setting

If you set "eco mode" to "AUTO", set the battery level at which eco mode turns on automatically.

About

Location & security

Use wireless networks (P.39)

Use GPS satellites (P.39)

Set up screen lock

Configure to enter the unlock security code for unlocking the screen.

Customer Lock Screens (P.24)

Set up SIM card lock

Lock SIM card

Change SIM PIN (P.53)

Visible passwords

Set to display characters when entering a password.

Select device administrators

Use secure credentials

Permit access to safe certificates and other credentials information.

A credential information storage password must be set beforehand.

Install from SD card

Install an encrypted certificate from a microSD card.

Set password

Set a password for credentials information storage.

Clear storage

Delete all credentials information and reset the credentials information storage password.

Applications

Unknown sources

Manage applications

You can check the name, version, etc., of applications, or force-close, delete, etc., applications.

Running services

Running applications appear. Touch and hold the application to stop running.

Storage use

The storage status for an application appears.

Battery use

The battery power used for each application appears.

Development

Configure various settings required for application development.

USB debugging

Stay awake

Allow mock locations

Accounts & sync

You can configure accounts for online services such as Microsoft® Exchange ActiveSync®, to synchronize data as well as exchange data between the product and servers for the various services. If set to synchronize automatically, the product is automatically updated with update information via the web.

For details on adding an account, see P.23.



Background data

All applications carry out data communication automatically.

Auto-sync

Applications synchronize data automatically.

■ Starting synchronization manually

- 1 From the "Settings" screen, tap "Accounts & sync".
- 2 Check items for synchronization ▶ tap the account to synchronize.
- 3 Tap  ▶ "Sync now".
- 4 To stop synchronization, tap  ▶ "Cancel sync".

To delete an account, tap the account to delete ▶ "Remove account" ▶ "Remove account".

Note

- To delete the Google account that was configured first, data on the product must be initialized.

Privacy

This allows you to configure backup for Google applications if you reset the product.

Back up my data

Set to restore the backed up settings and data when reinstalling an application.

Automatic restore

Running applications appears. Touch and hold the application to stop running.

Master reset

Reset all settings. The default password is 1234.

Factory data reset

Delete all data and return to the state at the time of purchase. Check the box of "Erase SD card" to delete all data on the microSD card. The default password is 1234.

Change Factory Password

The default password is 1234.

Storage

Total space

The capacity of the microSD card is shown.

Available space

The free space on the microSD card is shown.

Unmount / Mount SD card

To cancel recognition or make the microSD card recognizable by the product so that the microSD card can be removed safely, set to "Unmount SD card".

Erase SD card

Format the microSD card. Note that formatting erases all contents on the microSD card. Before setting, set "Unmount SD card" first.

Available space

The free space on this product is shown.

Language & keyboard

Select language

User dictionary

You can add any words to the dictionary, which are then displayed as conversion candidates when entering text with the Android keyboard.

XT9 Text Input (P.28)

Configure settings for the keyboard.

Languages and settings

After checking the box of the language, tap "Keyboard Input". The keyboard input settings screen appears. Configure settings for layouts, key input, etc., of the keyboard.

Preferences

Configure settings for text input.

About

See the version and copyright of TX9 Text Input.

Voice input & output

Voice recognizer settings

Language

SafeSearch

Block offensive words

Text-to-speech settings

Listen to an example

Always use my settings

Configure application settings to operate according to your own settings.

Default Engine

Install voice data

Speech rate

Configure the text reading out speed.

Language

Pico TTS

Configure the installed voice synthesis engine.

Accessibility

Configure user-aide applications which react with sound or vibration when operated.

Accessibility applications are not registered at time of purchase. You must download and install compatible applications beforehand from Android Market or other sites before you can set "Accessibility".

Accessibility

Set the accessibility functions.

Power button ends call

Set to end a call by pressing the power switch. However, in sleep mode, this does not end a call, and instead cancels sleep mode.

Date & time

Automatic

The time is adjusted automatically.

Set date

Select time zone

Set time

Use 24-hour format

To set the clock to the 24-hour display, check the box.

Select date format

About phone

Software update (P.60)

Status

Check the battery level, phone number, etc.

Battery use

The amount of battery used for each application appears.

Legal information

The open source licenses and Google usage agreement appears.

Model number

Android version

Baseband version

Kernel version

Build number

Wizard

The language selecting screen appears. See "Turning power on" (P.20).

Mobile Networks

This product is configured to automatically detect and switch the network mode, operator, etc., by default, but you can also manually switch.

- 1 From the "Settings" screen, tap "Wireless & networks" ▶ "Mobile networks".
- 2 Tap "Network Mode" ▶ select the item to check the network mode.


■ Setting an operator


After step 1, tap "Network operators" ▶ "Select automatically" or the network of the operator you want to use. The operator names that are displayed vary depending on the setting of the "Network Mode".

■ Enabling data roaming

Check the box of "Data roaming" ▶ "OK".

■ Switching access points

After step 1, tap "Mobile networks" ▶ "Access Point Names" ▶  ▶ "New APN".

Set each item to create. After setting each item, tap  ▶ "Save" ▶ the created access point.

Bluetooth

Connect with a Bluetooth compatible device via Bluetooth communication. You can connect a wireless headset, wireless audio device, etc.

There is no guarantee that this product is capable of wireless communication with all types of Bluetooth devices.

For information about the settings and operation procedures, see also the instruction manual of the Bluetooth compatible device.

Precautions when using Bluetooth devices

Note the following in order to ensure a good connection.

- Connect with another Bluetooth device within about a 10 m viewable distance. Depending on surroundings (walls, furniture, etc.) and building structure, the connectable distance may be shorter. The connectable distance will also be shorter if an obstacle is between this product and the other Bluetooth device. You may be unable to establish connection if this product and the device are located on opposite sides of walls containing metal rods, such as on upper and lower stairs or in adjoining rooms, especially in a building made of reinforced concrete. Also note that the above connection distances are not guaranteed.
- Connect this product distanced from other devices (electric product, AV equipment, OA equipment, etc.) as much as possible. (Since the product can easily be affected by a microwave oven in use, distance the product as far away as possible.)
If the product is brought closer when another device is on, it may be unable to connect normally, or may be a cause of television and radio noise or interference (television picture may be unclear for particular UHF or satellite channels).
- If you cannot connect normally due to a nearby broadcasting station, wireless transmitter, etc., change the location of the partner Bluetooth device. You may not be able to connect normally if surrounding radio waves are too strong.
- You can establish a wireless connection while a Bluetooth device is in a bag or pocket. However, if your body is located between the Bluetooth device and the product, decreased communication speed or noise may occur.

Bluetooth devices and wireless LAN (IEEE 802.11 b/g/n) use the same frequency band (2.4 GHz). If you use the product or Bluetooth device near a device equipped with a wireless LAN, radio wave interference may occur and can result in decreased communication speed, noise, poor connection, etc. If this happens, do the following.

- Keep the product and a Bluetooth device in wireless connection at least 10 m from a wireless LAN.
- Turn off a wireless LAN when used within 10 m.

The radio waves emitted by a Bluetooth device may affect operation of medical electronics or other equipment. Since it may cause an accident in some circumstances, turn off the product and any nearby Bluetooth devices in the following places.

- Trains
- Airplanes
- Hospitals
- Locations near automatic doors and emergency alert devices
- Places with ignitable gas, such as petrol stations

Connecting to a Bluetooth device

To connect with another Bluetooth device and exchange data, first carry out pairing (connection setting) with the other Bluetooth device and then connect.

Some Bluetooth devices only pair, and some Bluetooth devices proceed all the way to connection.

Turn on the partner device's Bluetooth function and check that it is connectable beforehand.

- 1 From the "Settings" screen, tap "Wireless & networks" ▶ "Bluetooth settings".**
- 2 Check the box of "Bluetooth" ▶ tap "Scan for devices".**
Scanning starts and a list of available Bluetooth devices appears.
- 3 Check the box of "Discoverable" to let this product be recognizable by the partner Bluetooth device.**
- 4 Tap the Bluetooth device to communicate with.**
Connection may be established with this procedure, depending on the Bluetooth device.
- 5 Tap "Pair", or enter the passkey (PIN) ▶ "OK".**

■ Canceling the connection

Tap the Bluetooth device to disconnect ▶ "OK".

■ Canceling the pairing

Touch and hold the Bluetooth device to disconnect ▶ "Disconnect".

Connecting to a VPN

A VPN (Virtual Private Network) is a technology allowing a connection externally to information on a protected local network, such as in a corporation or university. When configuring VPN connection from this product, obtain security information from the network administrator.

Adding a VPN

- 1 From the "Settings" screen, tap "Wireless & networks" ▶ "VPN settings".**
- 2 Tap "Add VPN" ▶ the VPN type to add.**
- 3 Follow the administrator's instructions to configure each item of the VPN setting.**
- 4 Tap ▶ "Save".**

Connecting to a VPN

- 1 From the "Settings" screen, tap "Wireless & networks" ▶ "VPN settings".**
- 2 Tap the VPN to connect.**
- 3 Enter the required information ▶ "Connect".**

■ Disconnecting from a VPN

Open the Notifications panel and tap the notification for the VPN connection ▶ the connected VPN.

Security Code

Some features require security codes, to make various functions more convenient. These include a password for locking this product and a network security code for network services. By using different codes for different purposes, you can get the most out of this product.

Precautions for all security codes

Avoid setting security codes using your birthday, part of your phone number, your address or room number, "1111" or "1234" that can be easily guessed by others. Be sure to write down the security codes and store them in a safe location.

PIN1 code / PIN2 code

The SIM card has two settable security codes, PIN1 code and PIN2 code.

PIN1 code is a 4- to 8-digit number (code) that is entered to confirm the user when the SIM card is inserted in this product, or when the product power is turned on. It is intended to prevent unauthorized use. Entering PIN1 code makes the product operable.

PIN2 code is a 4- to 8-digit number required when using the user certificate, such as when requesting issue.

Note

- If you enter the incorrect PIN1 / PIN2 code 5 times in succession, the PIN1 / PIN2 code is locked. Unlock using "PUK code".

Enabling the SIM's PIN

Set to require entry of the PIN1 code when the power is turned on.

- 1 From the "Settings" screen, tap "Location & security" ▶ "Set up SIM card lock".
- 2 Check the box of "Lock SIM card" ▶ enter the PIN1 code ▶ "OK".

■ Changing the PIN1 code

After step 1, tap "Change SIM PIN" ▶ enter the current PIN1 code ▶ "OK" ▶ enter the new PIN1 code ▶ "OK" ▶ enter the new PIN1 code again ▶ "OK".

PIN unblocking key (PUK)

The PIN unblock key (PUK) is an 8- digit number used to unblock the PIN1 / PIN2 code. You cannot change the key yourself.

If you enter the incorrect PUK code 3 times in succession, the SIM card will be locked. If this happens, please contact your mobile phone company for support.

■ Unblocking the PUK locked SIM

When the message indicating that a SIM card is locked by PUK is displayed, tap "Emergency call" ▶ enter "★★05★[PUK code]★[new PIN1 code]★[new PIN1 code]#".

For example, to change the SIM PIN 1 code to "2580" when the PIN unblocking key is "88888888", enter "★★05★88888888★2580★2580#".


File Management

Bluetooth Communication


You can use the Bluetooth communication function for wireless exchange of data with another Bluetooth device. For connecting to a Bluetooth device, refer to P.52.

Sending

Example: sending an image from the "Gallery"

- 1 From the application list screen, tap "Gallery" ▶ display the image to send.
- 2 Tap  ▶ "Share".
- 3 Select an application to share by.

Receiving

- 1 Send a file from the other Bluetooth device.
 appears in the status bar.
- 2 Open the Notifications panel and tap the notification for the received Bluetooth file ▶ "Accept".

Connecting a PC

You can read and write data on a microSD card from the connected PC.

- 1 Connect to a PC using the microUSB cable. (P.19)
- 2 Open the Notifications panel, tap "USB Connection" ▶ "USB Mass Storage" ▶ "OK" ▶ "OK".

■ Disconnecting the microUSB cable from the PC

Open the Notifications panel, tap "Turn off USB storage" ▶ "OK". Then, you can disconnect the microUSB cable from the PC.

Note

- Connect the USB plug of the microUSB cable for PC connection directly to the USB port of the PC. If the cable is connected via a USB hub or USB extension cable, a malfunction may occur.

Appendix

Troubleshooting

- First, check whether the software update is required. If required, update the software.
- If a symptom does not improve after its cause has been identified, refer to the web site (<http://www1.medias.net/mx>) or contact the shop of purchase.

■ Power supply

Power does not turn ON.	
• Is the battery pack inserted correctly?	P.18
• Is the battery pack charged?	P.19

■ Charging

Cannot charge (Notification LED does not light or blinks).	
• Is the battery pack inserted correctly?	P.18
• Is the AC charger plug securely connected to the power outlet?	P.19
• If you are using the microUSB cable for PC connection, is the PC powered on?	—
• If you make a call, perform data communication, or use some other function for a long time while charging, this product may become hot and charging may be stopped. In this case, charge again after the product cools down.	—

■ Operation of the product

The product becomes hot during operations or charging.	
• The product, battery pack, or AC charger may become hot during operations or charging, or if you use the camera function for a long time while charging. This is not a safety hazard, so you can continue to use them.	—
• If you use the camera function for a long time, the product may become hot and the camera function may end. Wait a while before restarting to use the camera function.	—

Battery pack usage time is short.	
• Has the product been out of the network service area for a long time? As this product searches for radio waves in order to enable communication when out of the network service area, more electricity is consumed than usual.	—
• The battery pack usage time varies depending on the usage conditions and the degradation level.	—
• The battery pack is a consumable. The available usage time shortens every time the battery pack is recharged. If the usage time significantly reduces compared to the time of purchase even if the battery pack is fully charged, purchase the specified battery pack.	—

Power turns off or automatic restart occurs.	
• If the battery pack terminal is dirty, the contact may become poor and the power may be turned off. If dirty, wipe the battery pack terminals with, for example, a dry cotton swab.	—

No operation occurs by tapping or pressing a key.	
• Is the power turned off?	P.20
• Is sleep mode set? Press the power switch to cancel sleep mode.	P.20
• Is the screen locked?	P.20
• Are you touching the touch panel correctly?	P.19

Tapping does not work properly.	
• Do you tap the screen with gloved hands?	—
• Do you tap with the tip of a fingernail, or is there any foreign matter between your hand and the screen?	—
• Is the display covered with a protective sheet? Some types of protective sheets prevent correct operation.	—


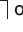
Screen response to tapping or key pressing is slow.	
• The screen response may slow down if large amounts of data are saved in this product or transferred between the product and the microSD card.	—


The SIM card is not recognized.	
• Is the SIM card inserted in the right direction?	P.17


The clock shows the wrong time.	
<ul style="list-style-type: none"> If power is kept on for a prolonged time, the clock may show the wrong time. Check that the "Date & time" are set to "Automatic", and turn the product off then back on in a location with good signal reception. 	–

■ Telephone call

The ringtone does not sound.	
<ul style="list-style-type: none"> Is the product in Silent mode? 	–
<ul style="list-style-type: none"> Is the ringtone volume set to its minimum? Set "Volume" of "Ring" on "Ringtones and sounds" from "Settings". 	–
<ul style="list-style-type: none"> If you cover the proximity sensor with your hand, the ringtone volume may be lower. 	P.16

■ does not display or nothing displays during a call	
<ul style="list-style-type: none"> If ■ does not display after cancelling the sleep mode, the proximity sensor may be covered by the protection sheet, etc. Do not cover the sensor, etc. Or, after cancelling the sleep mode, tap  or  to display ■ etc. 	P.16

Cannot make a call with  shown	
<ul style="list-style-type: none"> Are you out of the service area or in a place with poor signal strength? Check on the Status Bar. 	P.24

Cannot make a call ( does not disappear when you move, or calls cannot be made or received even when the radio wave is strong enough)	
<ul style="list-style-type: none"> Turn the power off and then on, or remove and reinsert the battery pack or the SIM card. 	P.17, 18, 20
<ul style="list-style-type: none"> You may not be able to make or receive calls, depending on the type of radio signal, even when it indicates otherwise. Move to another place and call again. 	–
<ul style="list-style-type: none"> Depending on how congested the radio waves are, it may be difficult to establish a connection in crowded places due to a congestion of calls and emails. 	–

■ Screen

The display is dim.	
<ul style="list-style-type: none"> Has the time set with "Screen timeout" elapsed? 	P.48
<ul style="list-style-type: none"> Is the product in eco mode? 	P.48
<ul style="list-style-type: none"> Has "Brightness" setting changed? 	P.48
<ul style="list-style-type: none"> Is battery level low? 	P.48


■ Sound

During a voice call, the other party's voice is difficult to hear or is too loud.	
<ul style="list-style-type: none"> Has the call volume been changed? 	P.29

■ Camera

Photos and videos shot with the camera are blurred.	
<ul style="list-style-type: none"> Check whether the lens is cloudy or has dirt on it. 	–
<ul style="list-style-type: none"> When shooting subject close to you, switch auto focus to "Close-up". 	P.43
<ul style="list-style-type: none"> Is "Antishake" set to "OFF"? 	P.43
<ul style="list-style-type: none"> Is auto focus set to "AF OFF"? 	P.43
<ul style="list-style-type: none"> When shooting a person, switch auto focus to "Normal (AF ON)". 	P.43

■ Using overseas

This product becomes unusable while overseas ( is displayed).	
<ul style="list-style-type: none"> The product may become usable by rebooting. 	–

Data communication is not available while overseas.	
<ul style="list-style-type: none"> Activate "Data roaming". 	P.47

No caller ID is displayed / A notified caller ID is different from that of the caller / Functions that use Contacts data or caller ID notifications do not work.	
<ul style="list-style-type: none"> Even when a caller notifies the caller ID, it is not displayed on the product unless notified from the network or network operator used. And, a notified caller ID may be different from that of the caller by some networks or networks operators you use. 	–

■ Data management

Data transfer is not working.	
<ul style="list-style-type: none"> Are you using a USB hub? If you use a USB hub, data transfer may not work properly. 	P.54

■ Infrared data exchange

Cannot receive all contact data.	
<ul style="list-style-type: none"> Is there available space in memory? In case of space shortage while receiving data, data transfer is stopped at that point. The received data is saved to the destination. 	–

■ Bluetooth function

The product cannot find or connect to a Bluetooth enabled device.	
<ul style="list-style-type: none"> Put the Bluetooth enabled device (commercial) on standby and register it. If you want to delete a registered device and register it again as a new device, you must delete the registered device from both the Bluetooth enabled device (commercial) and the product before you register it again. 	P.51

Error message

"Type PUK code to unlock SIM card" and "Password incorrect, SIM is locked! PUK2 requested."	
<ul style="list-style-type: none"> This message appears when you turn on the power while PIN1 code is locked. Tap "Emergency call" and enter " *★05★ [PUK code]* [New PIN1 code]* [New PIN1 code] #". 	—
<ul style="list-style-type: none"> This message appears if you turn on the power or attempt to perform an operation related to the SIM card while the PIN unblocking key is locked. 	—

Warranty and After-Sales Service

Warranty

- Be sure to receive a Warranty Guide at the time of purchase of this product. Read the contents of the Warranty Guide, confirm information such as the "Shop name and date of purchase" and keep it in a safe place. If necessary items are not described, immediately contact the shop of purchase.

The warranty for free repair is valid for 1 year about this product and accessories, and 6 months about the battery pack from the date of purchase.

- This product and its accessories are subject to modification, in part or whole, for improvement without prior notice.
- Data saved in your contacts, etc., may be modified or lost due to malfunction, repair or other handling of this product. You should therefore make a copy of your contacts data, etc., as a precautionary measure. If you have this product repaired, most of the previously downloaded data will not be transferred to the repaired product, as prohibited by the Copyright Act.

* You can back up contact data from this product to a microSD card.

After-sales service

For problems with your product

Before requesting repairs, read "Troubleshooting" in this instruction manual. If the problem still persists, contact the shop of purchase or a Call Center on the Warranty Guide, or see information on the website.

Note that it may take some days to repair the product depending on the malfunction.

During the warranty period

- This product is repaired at no charge under the conditions of the warranty.
- Make sure to bring the warranty for repair.
- You will be charged even during the warranty period if malfunction is caused by the use of devices and consumables other than those specified.

Repair may not be possible in the following cases:

- When a repair counter judges the cause of malfunction is exposure to water (Example: when wet-indication sticker reacts)
- When, as a result of inspection, corrosion is found due to exposure to water, condensation or sweat, or any of the internal boards are damaged or deformed (damage to the microUSB connector or LCD or cracked body could be the case as well)

* Since these conditions are outside the scope of the warranty, any repairs, if at all possible, will be charged.

After expiration of the warranty

All repairs that are requested are charged.

Precautions

Never modify this product or accessories.

- Doing so may result in fire, injuries, or malfunctions.
- The modified product may be repaired only if the owner agrees that all modified parts are restored to the original condition. However, repairs may be refused depending on the modifications.

The following cases may be considered as modifications.

- A sticker on portions such as of the LCD or keys.
- Decorations attached to this product using adhesion bond, etc.
- Parts such as the exterior, changed to other than standard.
- Malfunction and damage due to modifications will be repaired at the owner's expense, even if the warranty period is still effective.

The model plate must not be removed from this product.

The model plate certifies that this product satisfies technical standards.

It should be noted that if the plate is removed or is replaced with a different plate, and the original model plate cannot be verified, it may disqualify the product from repairs due to not being able to determine the technical standards of that particular phone.

Note that the settings and other information may be reset (cleared) as a result of malfunction, repair or other handling of the product. In this case, make the settings again.

When the repair is executed, MAC address of Wi-Fi / Bluetooth address in the product may be changed regardless of repaired part.

Magnetic components are used in parts of this product as described below. Do not allow credit cards or other devices that are vulnerable to magnetism to come into contact with the phone.

Parts where magnetic components are used: area under camera, speaker, earpiece, and around mouthpiece

The product has waterproof capability, however, if the inside of the product becomes wet or moist, immediately power off the product, remove the battery pack, and then notify a service center on the Warranty Guide as soon as possible.

However, note that we may not repair the product depending on the extent of the damage.

Memory dial (Contacts) and downloaded data

When you update the model or repair this product, data that has been imported, downloaded, or created by you may be changed or lost. NEC de México, S.A. de C.V. shall have no liability for any change or loss of any kind. Under some circumstances, NEC de México, S.A. de C.V. may replace your product with its equivalent instead of repairing it. The data stored in your product will not be transferred to the new product (some of the data may be able to be transferred).

Updating Software

Before updating software


- Software update through network can be done in Mexico only.
- Do not remove the battery pack while updating software. This may result in a failed update.
- Fully charge the battery pack before updating software.
- Software update is done through microSD card so that insert the microSD card before updating software.
- Software update (download, installation) may take a long time.
- When updating software, the product performs SSL/TLS communication with the server (manufacturer's site).
- We recommend that you update software without moving and when you have strong reception (4 wave-level bars).
 - * If the reception deteriorates during a software update or the download is stopped, move to a location with a better reception and start the software update again.
- A message appears to inform you that you cannot update during international roaming or when outside the service area.
- When there is insufficient battery level for a software update, a message appears to inform you that charge is insufficient for updating.
- If the software has already been updated, a message appears to inform you that no update is needed when you check for software updates.
- SMS messages sent to you during a software update are stored at the SMS center.
- During a software update, the product information (model and manufacturing numbers) are automatically sent to a software update server managed by the manufacture. The manufacturer shall not use this information for any purpose other than software update.
- If the software update fails, a message appears to inform you that the rewrite failed and no further operation may be possible. In this case, take the product to a repair counter.
- If a PIN code has been set, you will need to enter the PIN code when you restart this product after the update has been installed.
- Do not start any other applications during an installation of the software update.
- All operations are disabled during an installation of the software update. Also, you cannot stop updating.

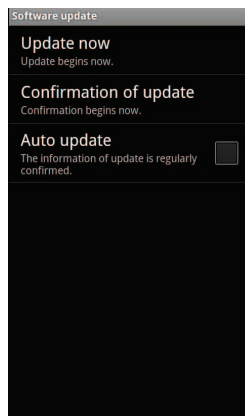
Note

- You can update software while still retaining data (such as contacts, camera images, email, downloaded data, etc.) on this product.
Note, however, that such data may not be protected, depending on the state of the product (malfunction, damage, exposure to water, etc.). It is recommended to back up necessary data. Some data, such as downloaded data, cannot be backed up.

Updating immediately

If the software update is available, you can start the software update immediately. For the latest software information, refer to the manufacturer's site.

- 1 From the Idle screen, tap  ► "Settings" ► "About phone" ► "Software update".



- 2 Tap "Update now" and follow the instructions on the screen.

■ Updating through Network

Choose "Updates by network" when you want to use a network for software update. After update package is downloaded, the product restarts, and then update starts.

- Since software updates are carried out via a microSD card, you must insert a microSD card beforehand.
- Packet communication charges are incurred for a software update using a GSM / WCDMA network. Since packet communication charges can become costly, a flat-rate packet rate is strongly recommended.
- Connection to a Wi-Fi network may be necessary depending on the version of the software to be updated.
- Before updating software via a Wi-Fi network, configure Wi-Fi settings beforehand and check that the product is connected to a Wi-Fi network (P.22).
- "Updates by network" cannot be done in the following circumstances.
 - When outside service area
 - During international roaming
 - Airplane mode
 - When the USB cable is connected and mounted
 - When the "USB tethering" is being used
 - When the "Portable Wi-Fi hotspot" is being used
 - When the date / time are not correctly set
 - When the battery level is too low for software update
 - When there is insufficient free space in the microSD card for software update

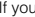
■ Updating through microSD Card

Choose "Updates by SD card" when you want to use a microSD card for software update.

- To carry out a software update, connect the product to a PC (P.54), and download the update software from the manufacturer's site to a microSD card by the PC. For more information, refer to the manufacturer's site.
- After the software update is completed, manually delete the update software downloaded to your microSD card (the software can be safely removed once the software update has completed normally).
- "Updates by SD card" cannot be done in the following circumstances.
 - When the battery level is too low for software update

- When the USB cable is connected and mounted
- When the "USB tethering" is being used
- When the "Portable Wi-Fi hotspot" is being used
- When the date / time are not correctly set
- When the battery level is too low for software update
- When there is insufficient free space in the microSD card for software update


Notes

- After restarting by your operation, the product automatically restarts again.
- If you tap "Later", you can update later. From the Idle screen, tap  ▶ "Settings" ▶ "About phone" ▶ "Software update" ▶ "Update now".

Confirming update

Check whether the software update is available for the product.


- "Confirmation of update" cannot be done in the following circumstances.
 - When outside service area
 - Airplane mode
 - When the date / time are not correctly set

1 From the Idle screen, tap  ▶ "Settings" ▶ "About phone" ▶ "Software update".

2 Tap "Confirmation of update".
The confirmation starts.

Automatically Software Update (Auto update)

You can regularly check the update information automatically, and check whether you can upgrade the version. For the latest software information, refer to the manufacturer's site.

1 From the Idle screen, tap  ▶ "Settings" ▶ "About phone" ▶ "Software update".

2 Check the box of "Auto update".

Notes

- "Auto update" is not set by default.
- The product cannot automatically check the update information when the "Auto update" is not set, during data communication for an immediate software update, etc.

■ Operation when an update is available

"Software update" screen appears when an update is available.

■ Starting the software update immediately

Tap "Now" and follow the instructions on the screen.

- Software update cannot be done in the following circumstances.
 - When outside service area
 - During international roaming
 - Airplane mode

Specifications

■ Phone

Operating frequency range	WCDMA	Band1 Transmitter (TX): 1922.40 to 1977.60 MHz Receiver (RX): 2112.40 to 2167.60 MHz Band2 Transmitter (TX): 1852.40 to 1907.60 MHz Receiver (RX): 1932.40 to 1987.60 MHz Band5 Transmitter (TX): 826.40 to 846.60 MHz Receiver (RX): 871.40 to 891.60 MHz
	GSM850	Transmitter (TX): 824.20 to 848.80 MHz Receiver (RX): 869.20 to 893.80 MHz
	EGSM900	Transmitter (TX): 880.20 to 914.80 MHz Receiver (RX): 925.20 to 959.80 MHz
	DCS	Transmitter (TX): 1710.20 to 1784.80 MHz Receiver (RX): 1805.20 to 1879.80 MHz
	US PCS	Transmitter (TX): 1850.20 to 1909.80 MHz Receiver (RX): 1930.20 to 1989.80 MHz
Extent of the precision frequency	WCDMA	Not exceed \pm (0.1 ppm + 10 Hz)
	GSM, DCS, US PCS	Not exceed \pm 0.1 ppm
CPU		MSM8255 (1 GHz)
Transmitting output	WCDMA	250 mW
	GSM	2 W
	DCS, US PCS	1 W
Operating temperature		5 °C to +40 °C 5 °C to +35 °C (while charging)
Relative humidity		45% to 85%
Dimensions		Approx. 128 mm (height) × 65 mm (width) × 8.2 mm (thickness)
Weight (\pm 1 g)		Approx. 117 g (with the battery pack)
Memory	ROM	2048 MB
	RAM	512 MB
Display	Type	TFT 16,777,216 colors
	Size	Approx. 4.0 inches
	Pixels	409,920 pixels (480 × 854 dots)
Image pickup device	Type	CMOS
	Size	1 / 4.0 inch
	Effective pixels	Approx. 5.0 million pixels
Camera	Recorded pixels (maximum)	Approx. 4.9 million pixels
	Digital zoom	Approx. 2 times max.
Recorder	Number of photos that can be recorded	When recorded in the microSD card (2 GB): Approx. 9,999 photos max. ²
	Continuous photo shooting	Shooting interval 0.04 / 0.1 seconds: 5 to 25 photos; Shooting interval 0.5 / 1 / 2 seconds: 5 to 100 photos
	Photo file format	JPEG
	Video recording time	When recorded in the microSD card (2 GB): Approx. 1,162 minutes max. ³
	Video file format	MP4
Wireless LAN ⁵	IEEE802.11b/g/n (2.4GHz band) compliant	
	Operating frequency range	2412 to 2472 MHz (802.11 b/g/n)
	Transmitting output	10 mW

Bluetooth	Operating frequency range	Transmission and reception : 2402 to 2480 MHz
	Transmitting output	Maximum 1 mW
	Compliant version	Bluetooth Specification Version 2.1 + EDR compliant*
	Power	Bluetooth Specification Power Class 2
	Line-of-sight communication distance ⁷	Up to approx. 10 m
	Compliant profile	HSP,HFP,A2DP,AVRCP,OPP,PBAP,SPP

*1 To set the network connection change, use "Mobile networks" (P.47).

*2 This is the maximum number of photos that can be saved to 1 folder, when Size = VGA (640 × 480) and Quality = Normal (file size = 95 KB).

*3 This is the recording time per video under the following conditions: Size = QCIF (176 × 144), Quality = Normal

*4 Background playback is supported.

*5 The wireless LAN of this product has received Wi-Fi certification.

*6 It is confirmed that this product and all Bluetooth devices are compliant with Bluetooth standards designated by Bluetooth SIG, and they are authenticated. However, procedures may differ or data transfer may not be possible depending on the device's characteristics or specifications.

*7 The available connection distance may be much shorter, depending on the ambient environment (wall, furniture, etc.) or building structure.

■ Battery pack

Product name	Battery pack N1101WB
Battery type	Lithium ion battery
Nominal voltage	3.7 V DC
Nominal capacity	1230 mAh

Note

- Specifications of this product and other supplied devices may be changed without notice.

Radio Frequency (RF) Signals

The operation of this equipment is subject to the following two conditions:

- (1) It is possible that this equipment or device may not cause harmful interference, and
- (2) The equipment or device must accept any interference, including interference that may cause undesired operation.

THIS MODEL PHONE MEETS THE U.S. GOVERNMENT'S REQUIREMENTS FOR EXPOSURE TO RADIO WAVES.

Your wireless phone contains a radio transmitter and receiver. Your phone is designed and manufactured not to exceed the emission limits for exposure to radio frequency (RF) energy set by the Federal Communications Commission of the U.S. Government. These limits are part of comprehensive guidelines and establish permitted levels of RF energy for the general population. The guidelines are based on standards that were developed by independent scientific organizations through periodic and thorough evaluation of scientific studies.

The exposure standard for wireless mobile phones employs a unit of measurement known as the Specific Absorption Rate (SAR).

The SAR limit set by the FCC is 1.6 W/kg.*

Tests for SAR are conducted using standard operating positions accepted by the FCC with the phone transmitting at its highest certified power level in all tested frequency bands. Although the SAR is determined at the highest certified power level, the actual SAR level of the phone while operating can be well below the maximum value. This is because the phone is designed to operate at multiple power levels so as to use only the power required to reach the network. In general, the closer you are to a wireless base station antenna, the lower the output. Before a phone model is available for sale to the public, it must be tested and certified to the FCC that it does not exceed the limit established by the U.S. government-adopted requirement for safe exposure. The tests are performed on position and locations (for example, at the ear and worn on the body) as required by FCC for each model. The highest SAR value for this model phone as reported to the FCC when tested for use at the ear is 1.14 W/kg, and when worn on the body, is 1.21 W/kg. (Body-worn measurements differ among phone models, depending upon available accessories and FCC requirements). While there may be differences between the SAR levels of various phones and at various positions, they all meet the U.S. government requirement.

The FCC has granted an Equipment Authorization for this model phone with all reported SAR levels evaluated as in compliance with the FCC RF exposure guidelines. SAR information on this phone is on file with the FCC

and can be found under the Display Grant section at <https://gulfoss2.fcc.gov/oetcf/eas/reports/GenericSearch.cfm> after search on FCC ID A98-IQF1504.

For body worn operation, this phone has been tested and meets the FCC RF exposure guidelines when used with an accessory designated for this product, or when used with an accessory that contains no metal and that positions the handset a minimum of 1.0 cm from the body.

Non-compliance with the above restrictions may result in violation of FCC RF Exposure guidelines.

* In the United States, the SAR limit for wireless mobile phones used by the public is 1.6 watts/kilogram (W/kg) averaged over one gram of tissue. SAR values may vary depending upon national reporting requirements and the network band.

FCC Regulations

This mobile phone complies with part 15 of the FCC Rules. Operation is subject to the following two conditions: (1) This product may not cause harmful interference, and (2) this product must accept any interference received, including interference that may cause undesired operation.

This mobile phone has been tested and found to comply with the limits for a Class B digital device, pursuant to Part 15 of the FCC Rules. These limits are designed to provide reasonable protection against harmful interference in a residential installation.

This product generates, uses and can radiate radio frequency energy and, if not installed and used in accordance with the instructions, may cause harmful interference to radio communications. However, there is no guarantee that interference will not occur in a particular installation; if this product does cause harmful interference to radio or television reception, which can be determined by turning the product off and on, the user is encouraged to try to correct the interference by one or more of the following measures:

- Reorient or relocate the receiving antenna.
- Increase the separation between the product and receiver.
- Connect the product into an outlet on a circuit different from that to which the receiver is connected.
- Consult the dealer or an experienced radio / TV technician for help.

Changes or modifications not expressly approved by the party responsible for compliance could void the user's authority to operate the equipment.

Declaration of Conformity

Hereby, NEC de México, S.A. de C.V. declares that this product is compliance with the essential requirements and other relevant provisions of Directive 1999/5/EC. Declaration of Conformity can be found on <http://www.n-keitai.com/lineup/index.html> (Japanese only).

CE0678!

This product uses a non-harmonised frequency and is intended for use in all European countries. The Wi-Fi can be operated in the EU without restriction indoors, but cannot be operated outdoors in France.

This mobile phone complies with the EU requirements for exposure to radio waves.

Your mobile phone is a radio transceiver, designed and manufactured not to exceed the SAR* limits** for exposure to radio-frequency (RF) energy, whose SAR* value, when tested for compliance against the standard, was 0.817 W/kg. While there may be differences between the SAR* levels of various phones and at various positions, they all meet*** the EU requirements for RF exposure.

* The exposure standard for mobile phones employs a unit of measurement known as the Specific Absorption Rate, or SAR.

** The SAR limit for mobile phones used by the public is 2.0 watts/kilogram (W/kg) averaged over ten grams of tissue, recommended by The Council of the European Union. The limit incorporates a substantial margin of safety to give additional protection for the public and to account for any variations in measurements.

*** Tests for SAR have been conducted using standard operating positions with the phone transmitting at its highest certified power level in all tested frequency bands. Although the SAR is determined at the highest certified power level, the actual SAR level of the phone while operating can be well below the maximum value. This is because the phone is designed to operate at multiple power levels so as to use only the power required to reach the network. In general, the closer you are to a base station antenna, the lower the power output.

Intellectual Property Right

Copyright and portrait rights

You have no right to copy, modify, or distribute contents such as text, images, music, or software downloaded from websites on the Internet, or images captured by the camera of this product without permission from the copyright holder, except when the copy or quote is for personal use that is allowed under Copyright Law. Note that it may be prohibited to capture or record live performances or exhibitions even for personal use. Refrain from taking portraits of other people and uploading such portraits to websites using this product without their consent, as this violates portrait rights.

Trademarks

- "Quick Shot", "MEDIAS", and "MEDIAS NAVI" are trademarks or registered trademarks of NEC CASIO Mobile Communications, Ltd.
- Microsoft®, Windows®, Windows Media® and Windows Vista® are trademarks or registered trademarks of Microsoft Corporation in the United States and / or other countries.
- Microsoft® Exchange ActiveSync® is a trademark or registered trademark of Microsoft Corporation in the United States and / or other countries.
- T9, T9 Trace & XT9 are trademarks and/or registered trademarks of Nuance Communications, Inc. and/or its affiliates in the United States and/or other countries. All other trademarks are the properties of their respective companies.
- "Google", "Android", "Android Market", "Gmail", "Google Calendar", "Google Maps", "Google Talk", "Google Latitude", "YouTube", "Picasa", "Google" logo, "Android" logo and "Android Market" logo are trademarks or registered trademarks of Google Inc.
- Wi-Fi®, WPA®, Wi-Fi CERTIFIED logo, and Wi-Fi Protected Setup logo are registered trademarks of Wi-Fi Alliance.
- Wi-Fi CERTIFIED™ and Wi-Fi Protected Setup are trademarks of Wi-Fi Alliance.



- Other company names or product names described in this manual are trademarks or registered trademarks of those companies.

Others

- This product is licensed in compliance with the MPEG-4 Visual Patent Portfolio License.

You are allowed to use it for private nonprofit purposes and only when:

- Recording moving pictures that are compliant with the standard of MPEG-4 Visual (hereinafter referred to as MPEG-4 Video)
- Playing MPEG-4 Videos recorded personally by consumers not engaged in profit activities
- Playing MPEG-4 Video supplied from a provider licensed by MPEG-LA

When using the product for any other purpose, such as commercial promotion, internal use or profit, contact MPEG LA, LLC of the U.S.

- The Bluetooth word mark and logos are owned by the Bluetooth SIG, INC. Other trademarks and trade names are those of their respective owners.

Notational conventions for Windows

The abbreviations of operating systems below are used in this manual.

- Windows 7 stands for Microsoft® Windows® 7 (Starter, Home Basic, Home Premium, Professional, Enterprise and Ultimate).
- Windows Vista stands for Windows Vista® (Home Basic, Home Premium, Business, Enterprise and Ultimate).
- Windows XP indicates the Microsoft® Windows® XP Professional operating system or Microsoft® Windows® XP Home Edition operating system.

GPL / LGPL - applicable software

This product contains software licensed complying with GNU General Public License (GPL) or GNU Lesser General Public License (LGPL). You can obtain the source code for the software and reproduce, redistribute, or modify the software in accordance with the GPL or LGPL.

For information on GPL and LGPL, from the Idle screen, tap **[...]** ▶ "Setting" ▶ "About phone" ▶ "Legal information" ▶ "Open source licenses".