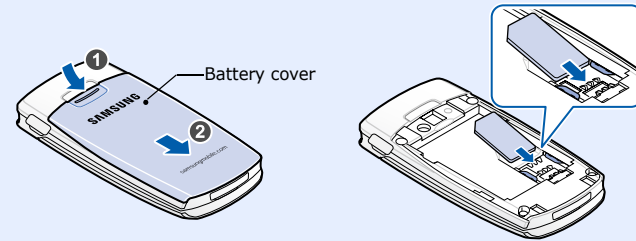


- Depending on the software installed or your service provider or country, some of the descriptions in this guide may not match your phone exactly.
- Depending on your country, your phone and accessories may appear different from the illustrations in this guide.
- Please read this manual before operating your phone, and keep it for future reference.

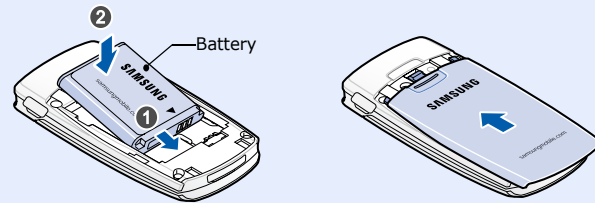
Printed in Korea
Code No.: GH68-14444A
English (LTN), 03/2007, Rev.1.0
World Wide Web
http://www.samsungmobile.com

Installing the SIM card and battery

1. Remove the battery cover and insert the SIM card.

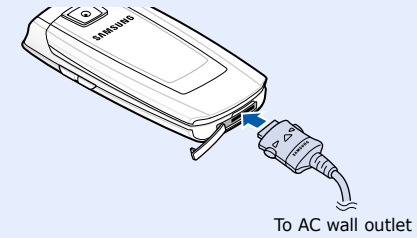


2. Install the battery and reattach the cover.

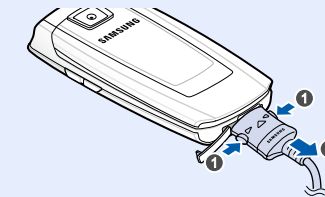


Charging the battery

1. Plug the supplied travel adapter.



2. When charging is finished, unplug the adapter.



Note: Do not remove the battery from the phone without unplugging the adapter first. Otherwise, the phone may be damaged.

Phone layout and key functions



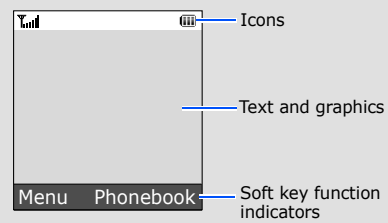
Silent mode Press and hold **#** in Idle mode to disable all sounds on the phone. To exit, press and hold this key again.

Voicemail server Press and hold **1** in Idle mode to access your voicemail server.

SOS mode With the phone closed, press the Volume keys four times to send an SOS message to preset phone numbers. Once the SOS message is sent, the phone will change to SOS mode and will receive calls only from the SOS message recipients until the SOS mode is cancelled. Upon receiving a call from the SOS message recipients, the phone will automatically answer the call, after one vibration, relaying the emergency situation to the caller.

Display

Your phone is in Idle mode when you are not on a call or using a menu. You must be in Idle mode to dial a phone number.



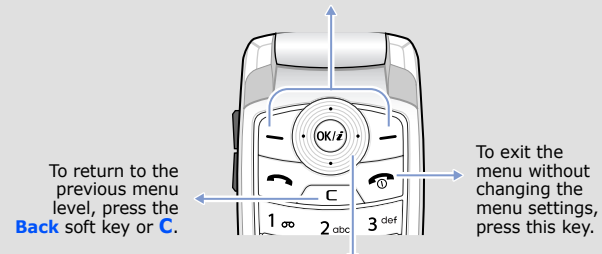
Your phone displays the following status indicators on the top of the screen:

Icon	Description
	Received signal strength
	Call in progress
	Out of your service area; you cannot send or receive calls except for emergency calls
	GPRS network
	Home Zone, if you have registered for the appropriate service
	Office Zone, if you have registered for the appropriate service
	Alarm set
	New SMS message
	New MMS message
	Call diverting feature active
	Call ringer type <ul style="list-style-type: none"> None: Melody : Vibration : Vibration then melody
	Silent mode
	Battery power level

Using the menus

In Idle mode, press the **Menu** soft key to enter the main menu.

Labels at the bottom corners of the display show the current soft key functions. Press the left soft key (L) or right soft key (R) to perform the function indicated.



To return to the previous menu level, press the **Back** soft key or **C**.

To exit the menu without changing the menu settings, press this key.

Use the 4-way navigation keys to scroll up, down, left, or right through the menu system, highlight menu items, change feature settings, and play games.

To select or modify a menu or feature:

- In Idle mode, press the **Menu** soft key.
- Press the Navigation keys to reach a desired menu and then press the **Select** soft key or **OK**.
- If the menu contains any submenus, locate the one you want by pressing the Navigation keys. Press the **Select** soft key or **OK** to enter the submenu.
If the selected menu contains additional submenus, repeat this step.
- Press the Navigation keys to find the setting of your choice.
- Press the **Select** soft key or **OK** to confirm your chosen setting.

Shortcut numbers

You can quickly access the menu you want by using shortcut numbers. The shortcut number displays in front of the menu name in Menu mode.

Switching on or off the phone

- Press and hold for more than one second to switch on the phone.
- To switch off the phone, press and hold for more than two seconds.

Changing the display language

- In Idle mode, press the **Menu** soft key.
- Select **Phone settings** → **Language** → **Text language**.
- Select a language.

Making a call

- In Idle mode, enter an area code and phone number, and press .
- When you want to end the call, press .

Answering a call

- When the phone rings, press the **Accept** soft key or to answer a call.
- To end the call, press .

Menu map

1. Call log 1.1 Missed calls 1.2 Received calls 1.3 Dialed calls 1.4 Delete all 1.5 Call time 1.6 Call costs*	5. Messages 5.1 Text messages 5.2 Multimedia messages 5.3 Push messages 5.4 Preset messages 5.5 Voice mail 5.6 Broadcast 5.7 Settings 5.8 SOS messages 5.9 Memory status	8.3 Delete all 8.4 Settings 8.5 Memory status
2. Network services 2.1 Call diverting 2.2 Call barring 2.3 Call waiting 2.4 Network selection 2.5 Caller ID 2.6 Band selection 2.7 Active line*	6. Fun box 6.1 WWW services 6.2 Media box 6.3 JAVA world	9. Phone settings 9.1 Display 9.2 Greeting message 9.3 Language 9.4 Offline mode 9.5 Security 9.6 Auto redial 9.7 Anykey answer 9.8 Active folder 9.9 Volume key 9.0 Reset settings
3. Applications 3.1 Voice recorder 3.2 SIM-AT*	7. Planner 7.1 New memo 7.2 Calendar 7.3 To do list 7.4 Clock 7.5 Alarm 7.6 Calculator 7.7 Converter 7.8 Timer 7.9 Stopwatch	Phonebook 1 Find name 2 FDN list 3 Add entry 4 Speed-dial list 5 Own number 6 Group setting 7 Management 8 SDN*
4. Sound settings 4.1 Incoming calls 4.2 Messages 4.3 Power on/off 4.4 Connection tone 4.5 Keypad tone 4.6 Minute minder 4.7 Silent mode 4.8 Alerts on call	8. Camera 8.1 Take photos 8.2 My photos	* Shows only if supported by your SIM card.

Adjusting the volume

- In Idle mode, press the **Menu** soft key.
- Select **Sound settings** → **Incoming calls** → **Ring volume**.
- Press the Navigation keys to adjust the volume level.
- Press the **Save** soft key.

While a call is in progress, press **Up** or **Down** to adjust the earpiece volume.

Changing a ringtone for calls

- In Idle mode, press the **Menu** soft key.
- Select **Sound settings** → **Incoming calls** → **Default ringtones** or **My sounds**.
- Select a ringtone and press the **Yes** soft key.

Redialing recent numbers

- In Idle mode, press .
- Press **Up** or **Down** to scroll to the number you want.
- Press to dial the number.

Entering text

Changing the text input mode

In a text input field, press the right soft key until the input mode indicator you want appears:

- Eng**: T9 mode
- Eng**: ABC mode
- Eng**: Number mode
- Eng**: Symbol mode

T9 mode

- Press **2** to **9** to start entering a word. Press each key once for one letter.
Example: To enter *Hello* in T9 mode, press **4**, **3**, **5**, **5**, and **6**.
T9 predicts the word that you are typing, and it may change with each key that you press.
- Enter the whole word before editing or deleting characters.
- When the word displays correctly, go to step 4. Otherwise, press **0** to display alternative word choices for the keys that you have pressed.
For example, *Of* and *Me* use **6** and **3**.
- Press **#** to insert a space and enter the next word.

ABC mode

Press the keys labelled with the character you want:

- once for the first character
- twice for the second character
- and so on.

For example, press **2** three times to enter “C” and **5** two times to enter “K”.

Number mode

Press the keys corresponding to the digits you want.

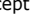
Symbol mode

Press the number keys corresponding to the symbol you want and press the **OK** soft key. You can press **Up** or **Down** to display more symbols.

Tips for entering text

- To move the cursor, press the Navigation keys.
- To delete characters one by one, press **C**. To delete all of the characters, press and hold **C**.
- To insert a space between characters, press **#**.
- To change case in T9 mode or ABC mode, press *****.
- To quickly switch to Symbol mode, press and hold *****.
- To enter punctuation marks in T9 mode or ABC mode, press **1**.

Feature	Description	Select
Use the SIM service	Use a variety of additional services offered by your service provider.	Menu > Applications > SIM-AT
Select ringtone and volume	Select a ringtone for incoming calls, a volume level, or an alert type.	Menu > Sound settings > Incoming calls
Select a message tone	Select the alert ringtone and alert type for incoming messages or set how often you are informed of a new message.	Menu > Sound settings > Messages
Power on/off tone	Set the phone to sound when it is switched on or off.	Menu > Sound settings > Power on/off
Connection tone	Set the phone to beep when a call is connected to the system.	Menu > Sound settings > Connection tone
Select key tone	Select a tone which the phone sounds when you press a key.	Menu > Sound settings > Keypad tone
Minute minder	Set the phone to beep every minute during a call to keep you informed of the length of your call.	Menu > Sound settings > Minute minder
Silent mode	Set how the phone acts to alert you to a specific event while in Silent mode.	Menu > Sound settings > Silent mode
Alerts on call	Set the phone to alert you when you receive a new message or when the time for an alarm comes during a call.	Menu > Sound settings > Alerts on call

Feature	Description	Select
Offline mode	Switch the phone to Offline mode, in which the phone functions requiring network connection are deactivated.	Menu > Phone settings > Offline mode
Security	Protect the phone against unauthorised use.	Menu > Phone settings > Security
Mobile tracker	Track your phone when it is stolen or lost. When someone tries to use your phone with other SIM card, the phone will automatically send the preset tracking message to your family or friends.	Menu > Phone settings > Security > Mobile tracker
Auto redial	Set the phone to make up to ten attempts to redial a phone number after an unsuccessful call.	Menu > Phone settings > Auto redial
Anykey answer	Answer an incoming call by pressing any key, except for the Reject soft key and  .	Menu > Phone settings > Anykey answer
Active folder	Answer an incoming call by opening the phone.	Menu > Phone settings > Active folder
Volume key	Set whether the phone mutes the call ringer or rejects a call if you press and hold the Volume keys when a call comes in.	Menu > Phone settings > Volume key
Reset the phone	Reset the phone to the factory default settings.	Menu > Phone settings > Reset settings

Sending an SMS message

1. In Idle mode, press the **Menu** soft key.
2. Select **Messages** → **Text messages** → **Create**.
3. Enter the message text.
4. Press the **Options** soft key and add items using the following options:
 - **Add media**: add sounds, images, or animated images.
 - **Add emoticon**: add emoticons.
 - **Preset messages**: add text templates.
5. Press the **Options** soft key and select **Send**.
6. Select an empty location.
7. Enter a destination number and press the **OK** soft key.
8. Press the **Send** soft key to send the message.

Taking a photo

1. In Idle mode, press the **Menu** soft key.
2. Select **Camera** → **Take photos**.
3. Aim the lens at the subject and make any desired adjustments.

Feature	Description	Select
Send SMS or MMS messages	Create and send messages to other mobile phones.	Menu > Messages > Text messages or Multimedia messages > Create
Read SMS or MMS messages	Read received, sent, or saved messages.	Menu > Messages > Text messages or Multimedia messages > Inbox, Outbox, Draft, or My folder
Emoticon templates	Preset templates of frequently used emoticons.	Menu > Messages > Text messages > Emoticon templates
Delete messages	Delete messages in each message folder, or all messages at once.	Menu > Messages > Text messages or Multimedia messages > Delete all
Push messages	Change the settings for the service, and access or delete push messages.	Menu > Messages > Push messages
Message templates	Preset templates of frequently used messages.	Menu > Messages > Preset messages
Voicemail	Access your voicemail server and listen to messages on the network.	Menu > Messages > Voice mail
Broadcast messages	Change settings for the service and access broadcast messages.	Menu > Messages > Broadcast
Messaging options	Set options for using messaging services.	Menu > Messages > Settings

Important safety precautions

Read these guidelines before using your wireless phone. Failure to comply with them may be dangerous or illegal.

Drive safely at all times

Do not use a hand-held phone while driving; park your vehicle first.

Switching off when refueling

Do not use the phone at a refueling point (service station) or near fuels or chemicals.

Switching off in an aircraft

Wireless phones can cause interference. Using them in an aircraft is both illegal and dangerous.

Switching off near all medical equipment

Hospitals and health care facilities may be using equipment that could be sensitive to external RF energy. Follow any regulations or rules in force.

Interference


All wireless phones may be subject to interference, which could affect their performance.

Special regulations

Follow any special regulations in force in any area and always switch off your phone whenever it is forbidden to use it.

Water resistance

Your phone is not water-resistant. Keep it dry.

4. Press  to take a photo.
5. Press **C** to take another photo.

Note: After taking a photo, you may be unable to save the photo, depending on your phone's memory capacity. Delete old photos to free up memory.

Quick feature reference

This section provides brief explanations of features on your phone.


Feature	Description	Select
Find a contact	Search for contacts in Phonebook.	Phonebook > Find name
Create an FDN list	Create a list of contacts to be used in FDN (Fixed Dialing Number) mode, in which the phone allows outgoing calls only to the specified phone numbers.	Phonebook > FDN list
Add a new contact	Add a new contact to Phonebook.	Phonebook > Add entry
Speed dial	Assign speed dial numbers for your most frequently dialed numbers.	Phonebook > Speed-dial list
Check your own phone numbers	Check your phone numbers or assign a name to them.	Phonebook > Own number

Feature	Description	Select
SOS message	Send SOS messages to your family or friends for help in an emergency.	Menu > Messages > SOS messages
Message memory status	Check memory information for messages.	Menu > Messages > Memory status
Web browser	Launch and configure the web browser.	Menu > Fun box > WWW services
Access media files	Access sounds or images in your phone's memory.	Menu > Fun box > Media box > My photos, Downloaded images, or Sounds
Delete all media files	Delete sounds and images in each media box.	Menu > Fun box > Media box > Delete all
Fun box memory status	Check the amount of memory in use for games, sounds, images, and MMS messages.	Menu > Fun box > Media box > Memory status
Java world	Access the embedded Java games and downloaded Java applications.	Menu > Fun box > JAVA world
New memo	Create a new calendar item and set it for the date and time you wanted to be reminded.	Menu > Planner > New memo
Calendar	Keep track of daily or monthly schedules.	Menu > Planner > Calendar
To-do list	Create a list of tasks and assign a deadline to each task.	Menu > Planner > To do list

Sensible use

Use only in the normal position (held to your ear). Avoid unnecessary contact with the antenna when the phone is switched on.

Emergency calls

Key in the emergency number for your present location, then press . Do not end the call until given permission to do so.


Small children and your phone

Keep the phone and all its parts including accessories out of reach of small children.

Accessories and batteries

Use only Samsung-approved batteries and accessories, such as headsets and PC data cables. Use of any unauthorised accessories could damage your phone and may be dangerous.

CAUTION Risk of explosion if a battery is replaced by an incorrect type. Dispose used batteries according to the instructions.

 At very high volume, prolonged listening to a headset can damage your hearing.

Qualified service

Only qualified service personnel may repair your phone.

Feature	Description	Select
Change properties of a caller group	Select a ringtone and image for incoming calls from members of a group. Also change the group name.	Phonebook > Group setting
Manage contacts	Copy all contacts on the SIM card to the phone's memory, delete all Phonebook contacts. You can also check memory information for Phonebook contacts.	Phonebook > Management
SDN (Service Dialling Numbers)	Access the list of service numbers assigned by your service provider.	Phonebook > SDN
View recent calls	View the most recent calls you have dialed, received, or missed.	Menu > Call log > Missed calls, Received calls, or Dialed calls
Delete recent calls	Delete the call logs in each call type, or all logs at once.	Menu > Call log > Delete all
Call time display	View the duration of recent calls you have dialed and received. Also reset the time counter.	Menu > Call log > Call time
Call cost display	View the cost of your calls.	Menu > Call log > Call costs
Network services	Access network services offered by your service provider.	Menu > Network services
Voice memo	Record voice memos and listen to them.	Menu > Applications > Voice recorder

Feature	Description	Select
Time and date	Set the current time and date manually and set your local time zone.	Menu > Planner > Clock
Alarm	Set an alarm to sound at a specific time.	Menu > Planner > Alarm
Calculator	Perform basic arithmetic functions.	Menu > Planner > Calculator
Converter	Do conversions such as length and temperature.	Menu > Planner > Converter
Timer	Set a period of time for the phone to count down.	Menu > Planner > Timer
Stopwatch	Measure elapsed time.	Menu > Planner > Stopwatch
Camera	Take photos in various modes, and access saved photos in jpeg format. You can also check memory information for the photos.	Menu > Camera
Display settings	Change settings for the display and backlight.	Menu > Phone settings > Display
Greeting message	Enter the greeting message to be displayed when the phone is switched on.	Menu > Phone settings > Greeting message
Language selection	Select a language to be used for the display text or text input mode.	Menu > Phone settings > Language

SAR information

Your wireless phone is a radio transmitter and receiver. It is designed and manufactured not to exceed the emission limits for exposure to radio frequency (RF) energy set by the Federal Communications Commission (FCC) of the U.S. Government. These limits are part of comprehensive guidelines and establish permitted levels of RF energy for the general population. The guidelines are based on the safety standards that were developed by independent scientific organizations through periodic and through evaluation of scientific studies.

The standards include a substantial safety margin designed to assure the safety of all persons, regardless of age and health.

The exposure standard for wireless phones employs a unit of measurement known as Specific Absorption Rate (SAR). The SAR limit set by the FCC is 1.6 W/kg*. The highest SAR values for this model phone as reported to the FCC are GSM 850 Head: 1.41 W/kg, Body-worn: 0.655 W/kg and GSM 1900 Head: 0.861 W/kg, Body-worn: 0.208 W/kg.

* In the U.S. and Canada, the SAR limit for mobile phones used by the public is 1.6 watts/kg (W/kg) averaged over one gram of tissue. The standard incorporates a substantial margin of safety to give additional protection for the public and to account for any variations in measurements.