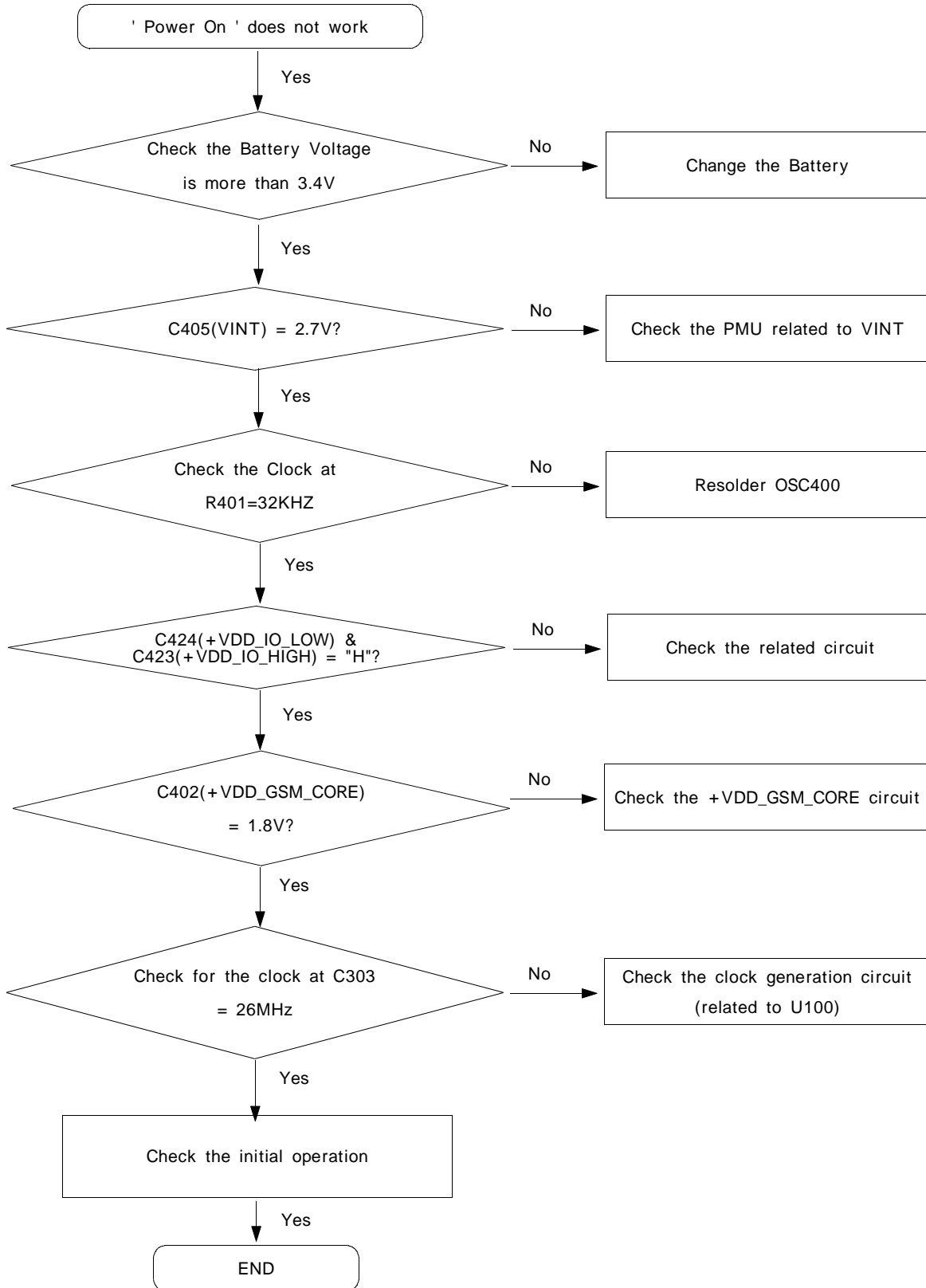
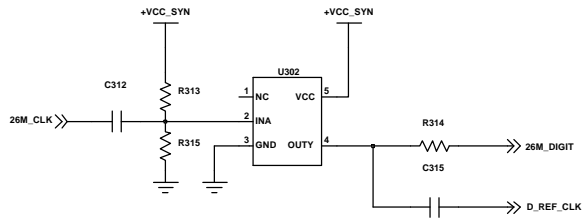
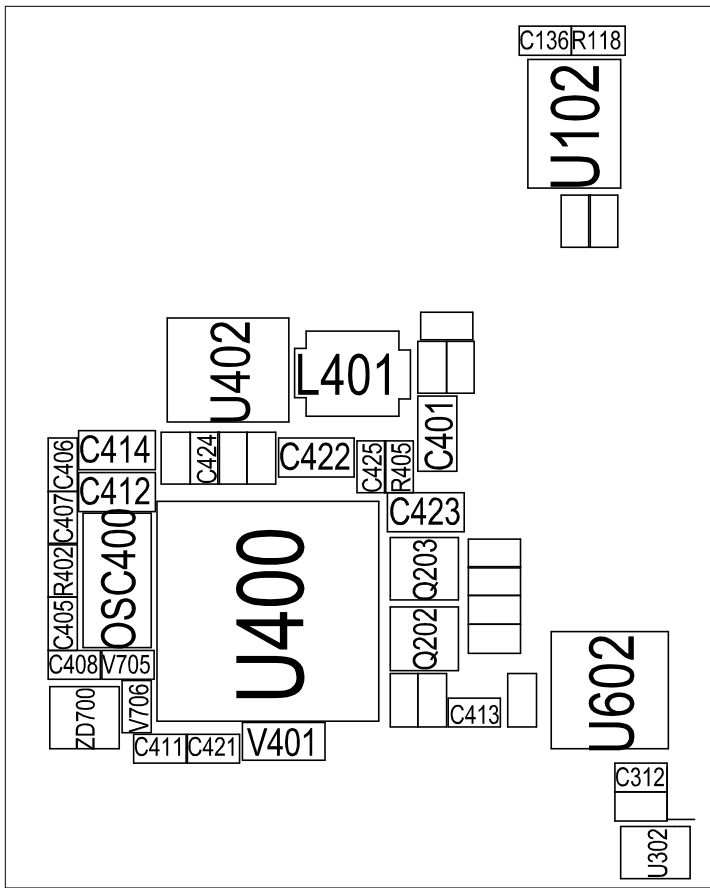
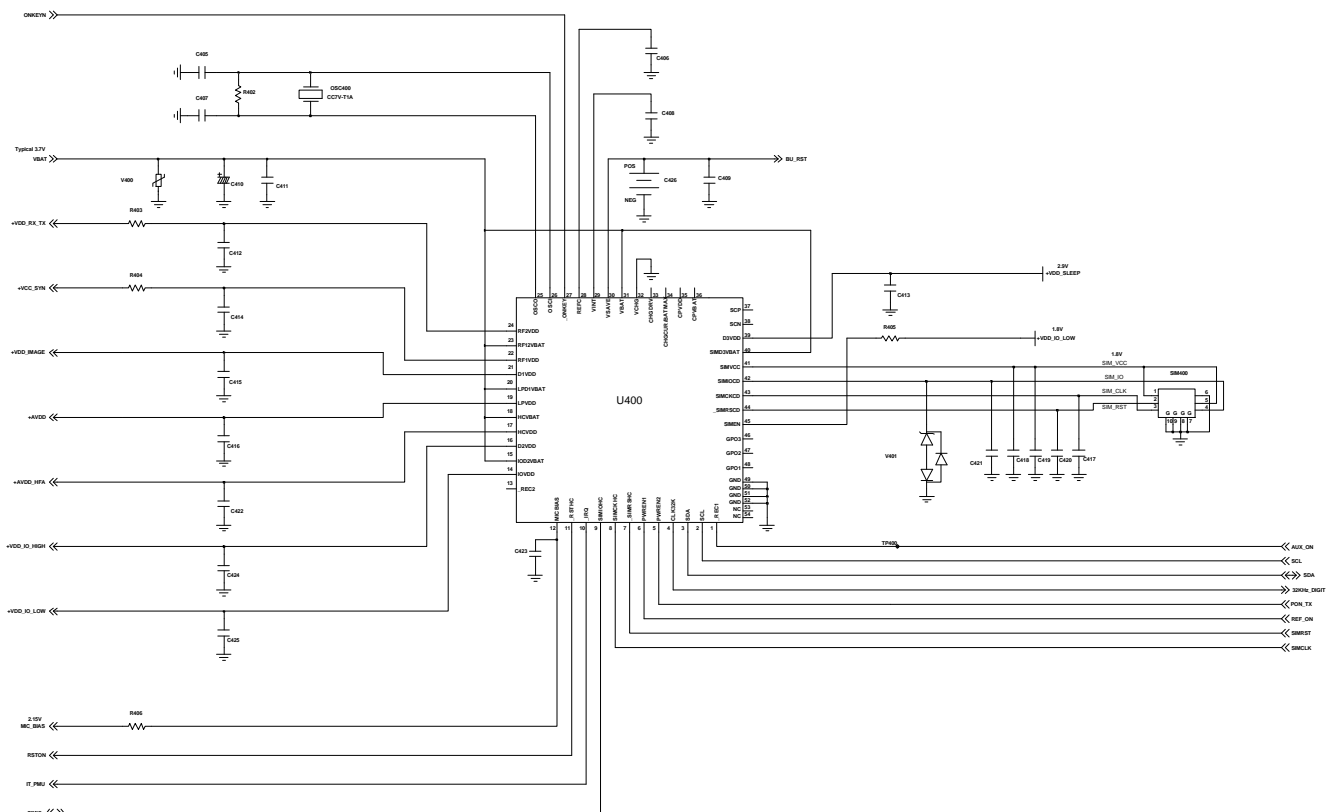

7. Flow Chart of Troubleshooting

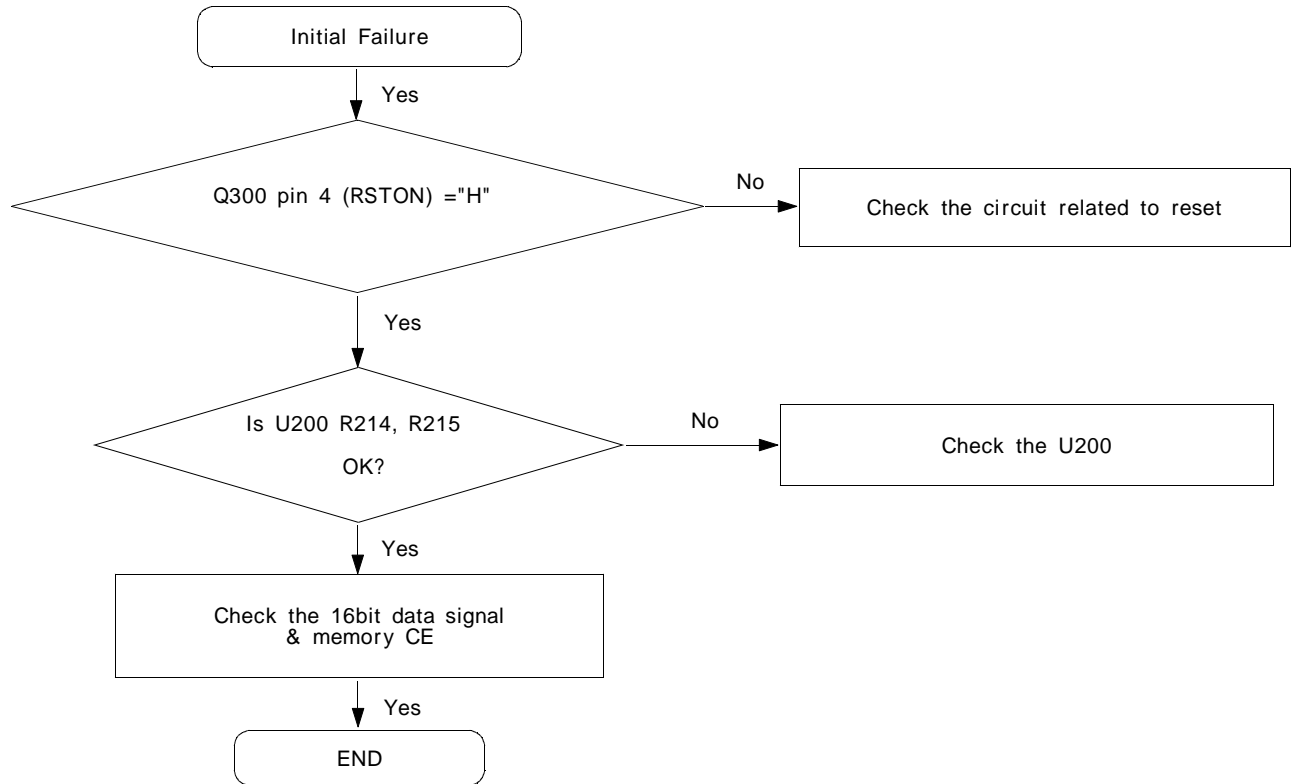
7-1. Power On

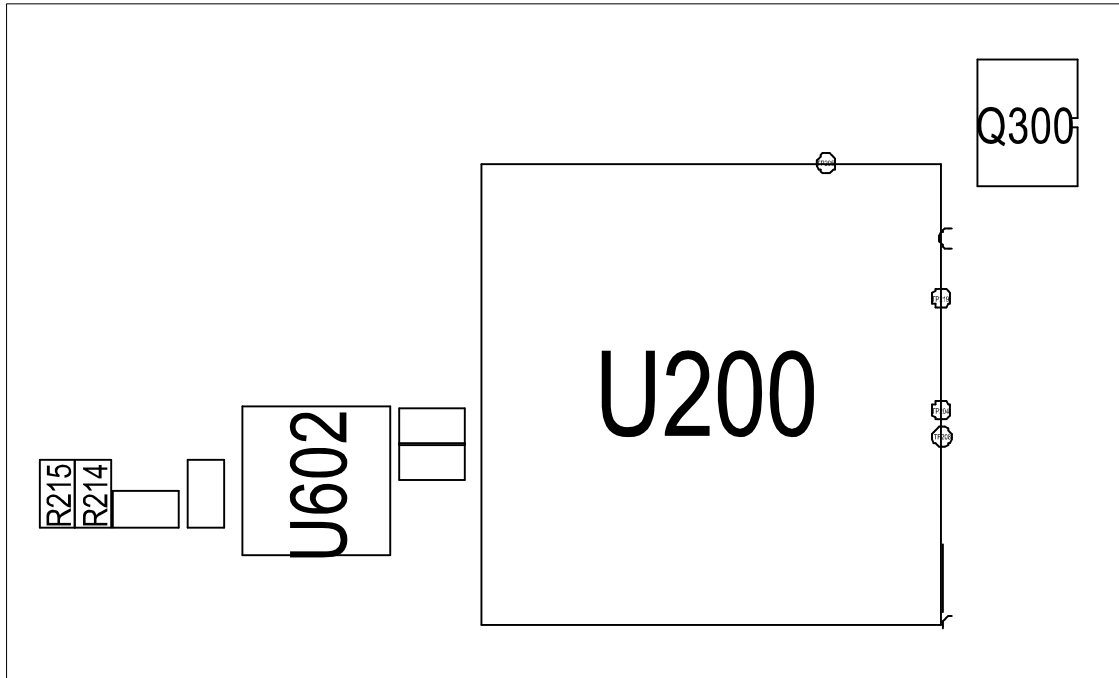


Flow Chart of Troubleshooting

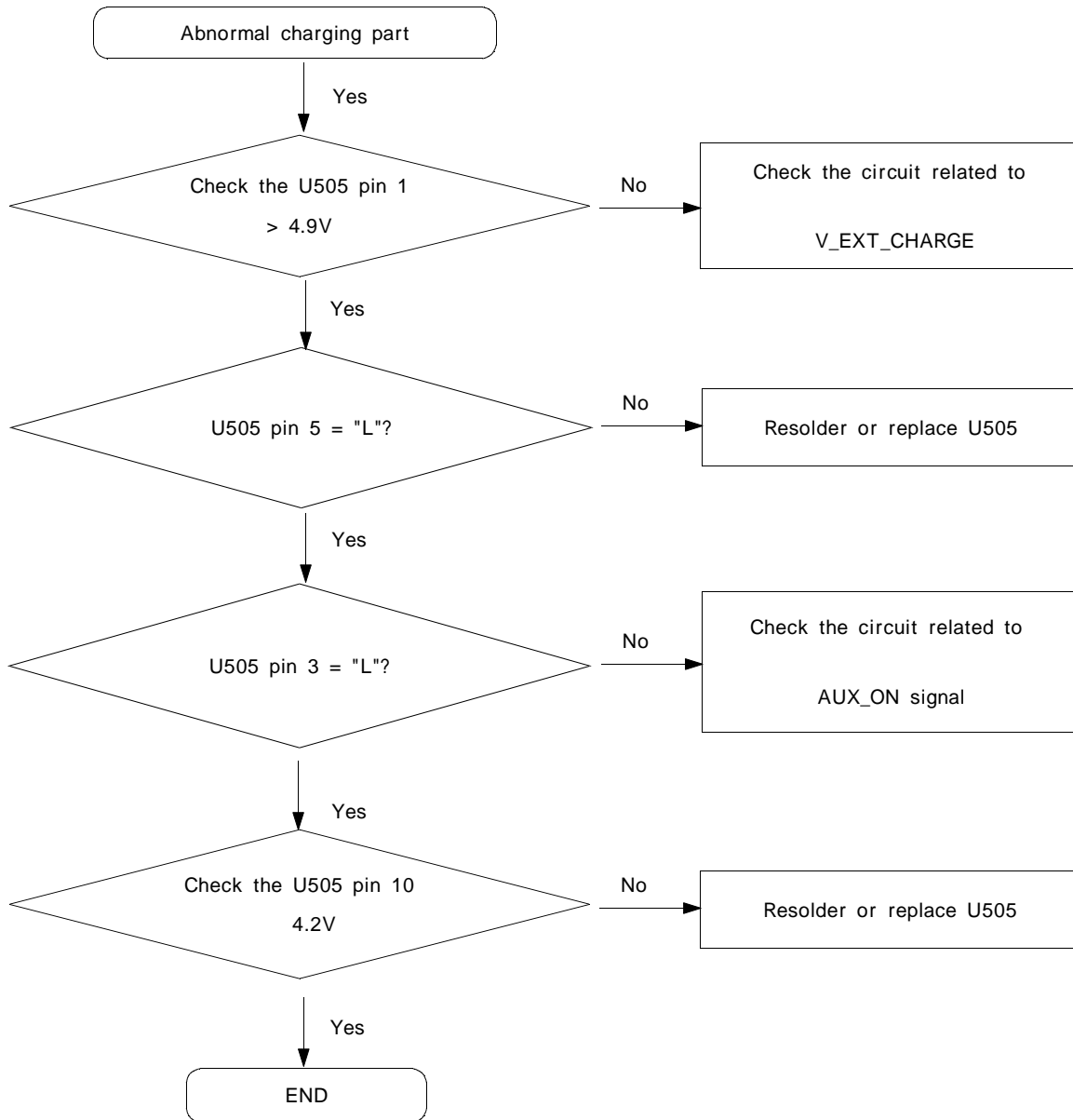


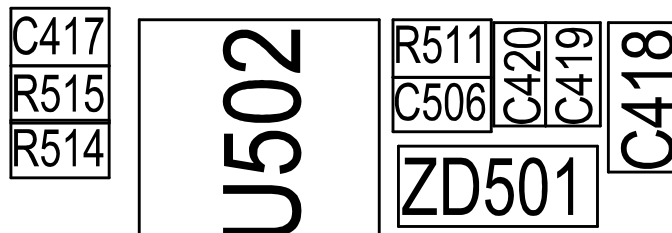
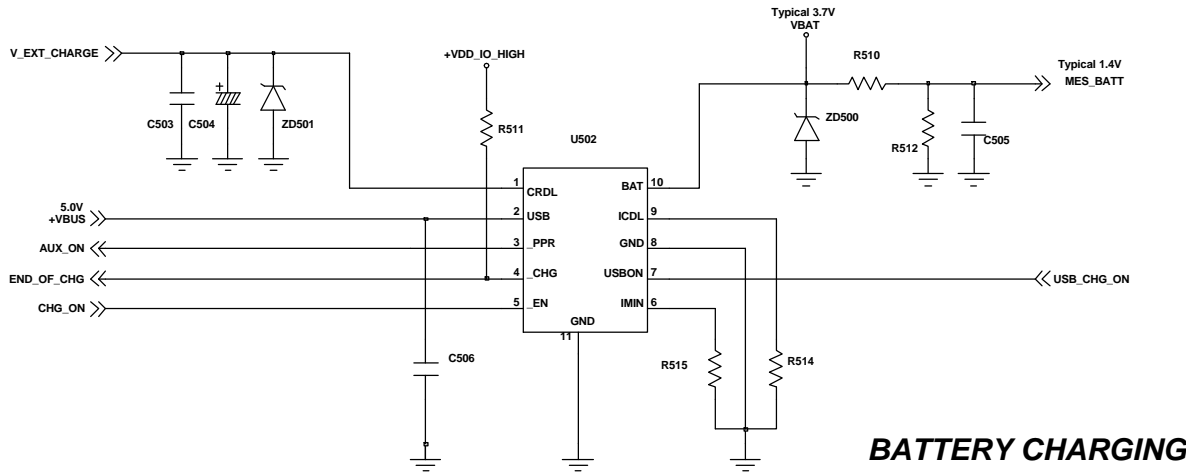
7-2. Initial



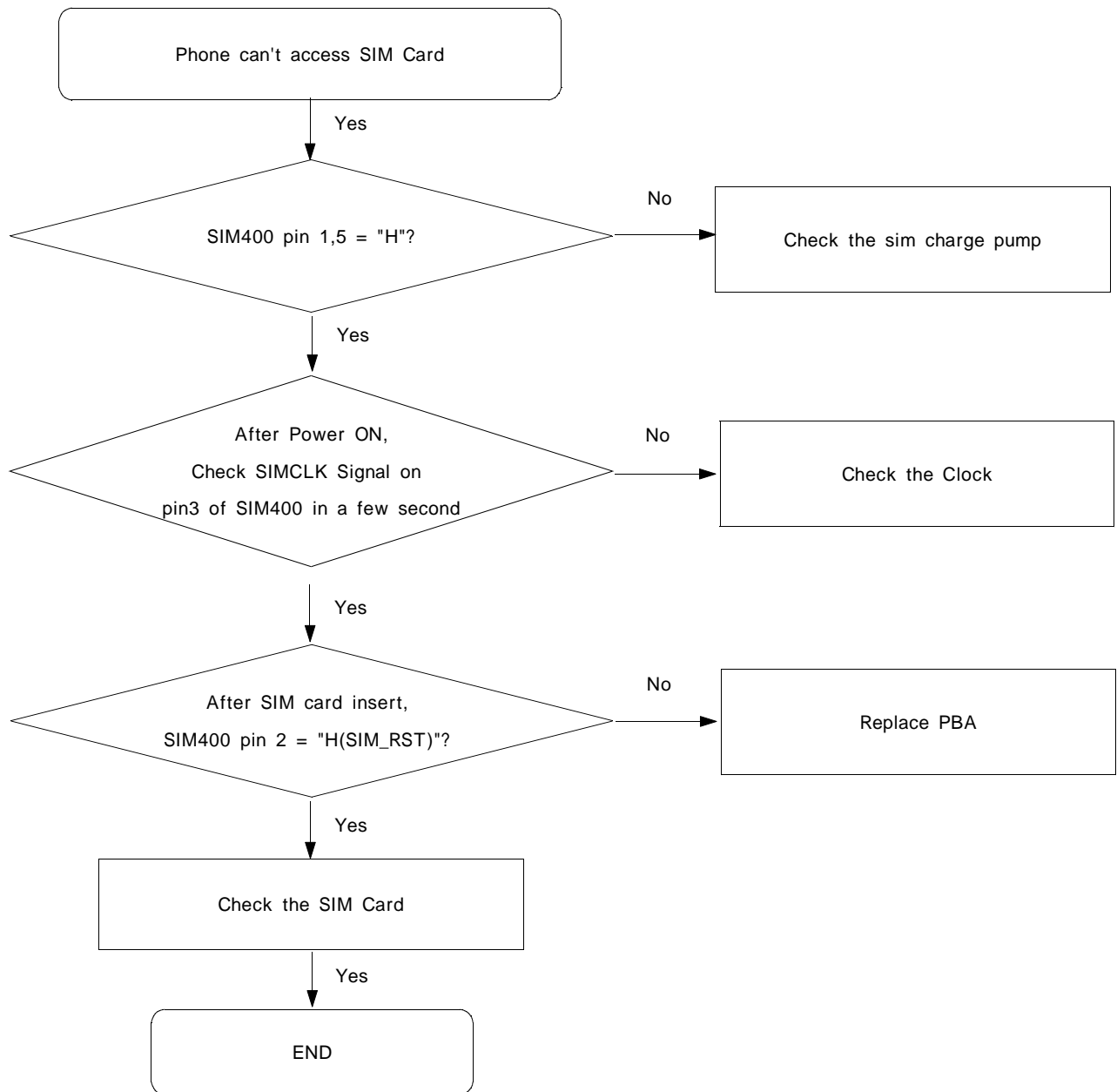


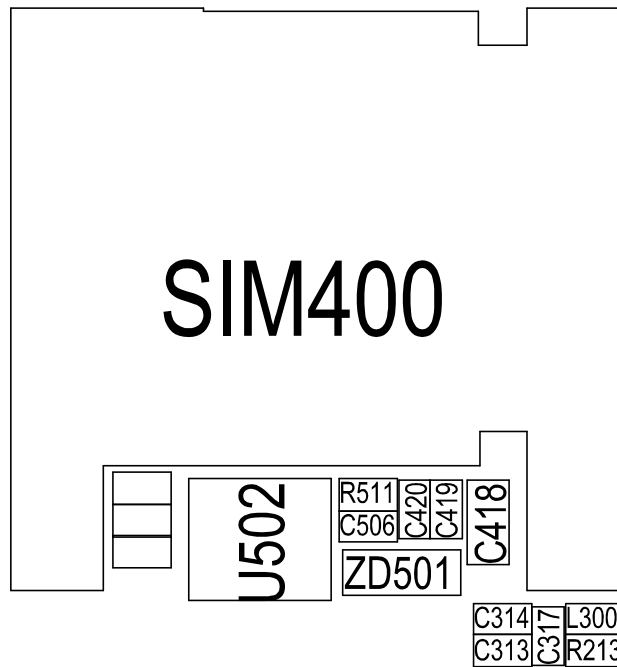
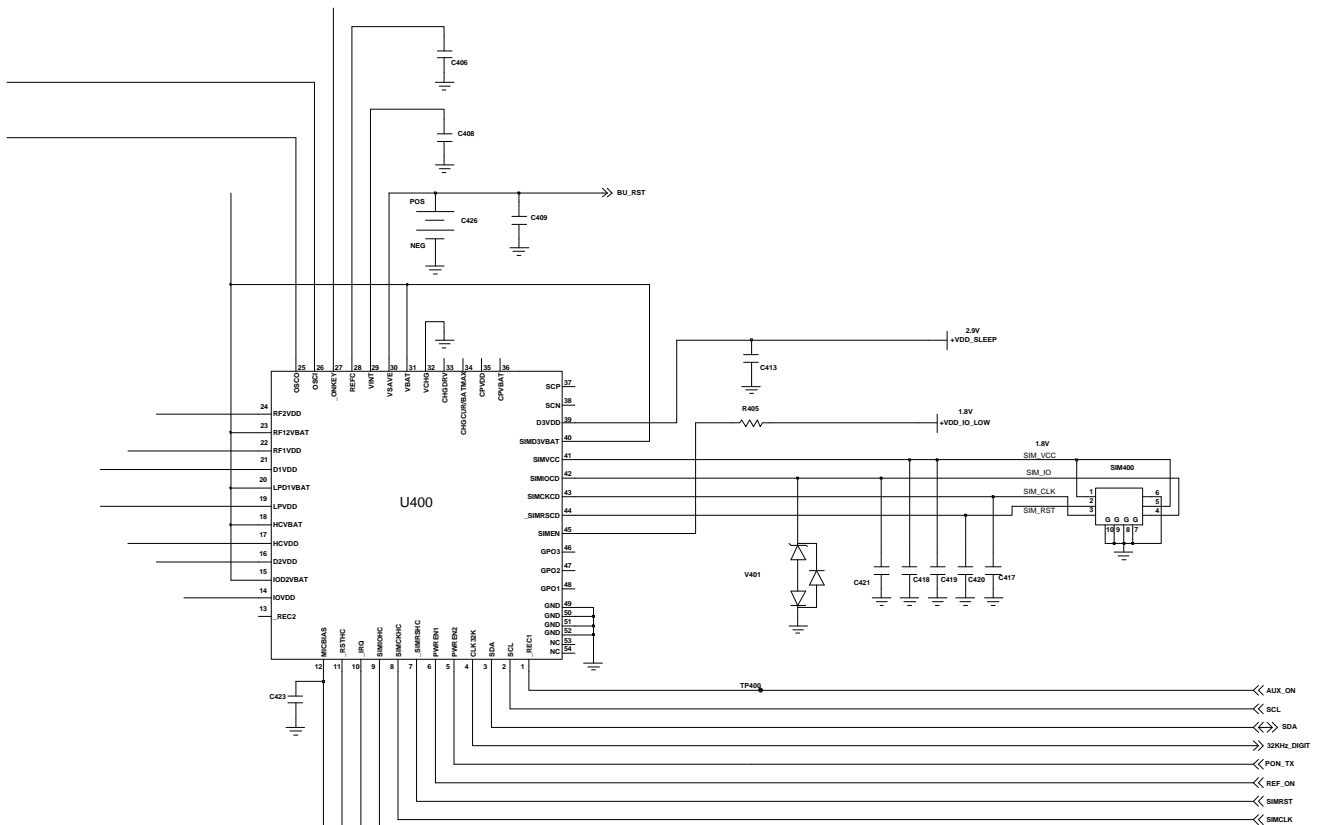
7-3. Charging Part



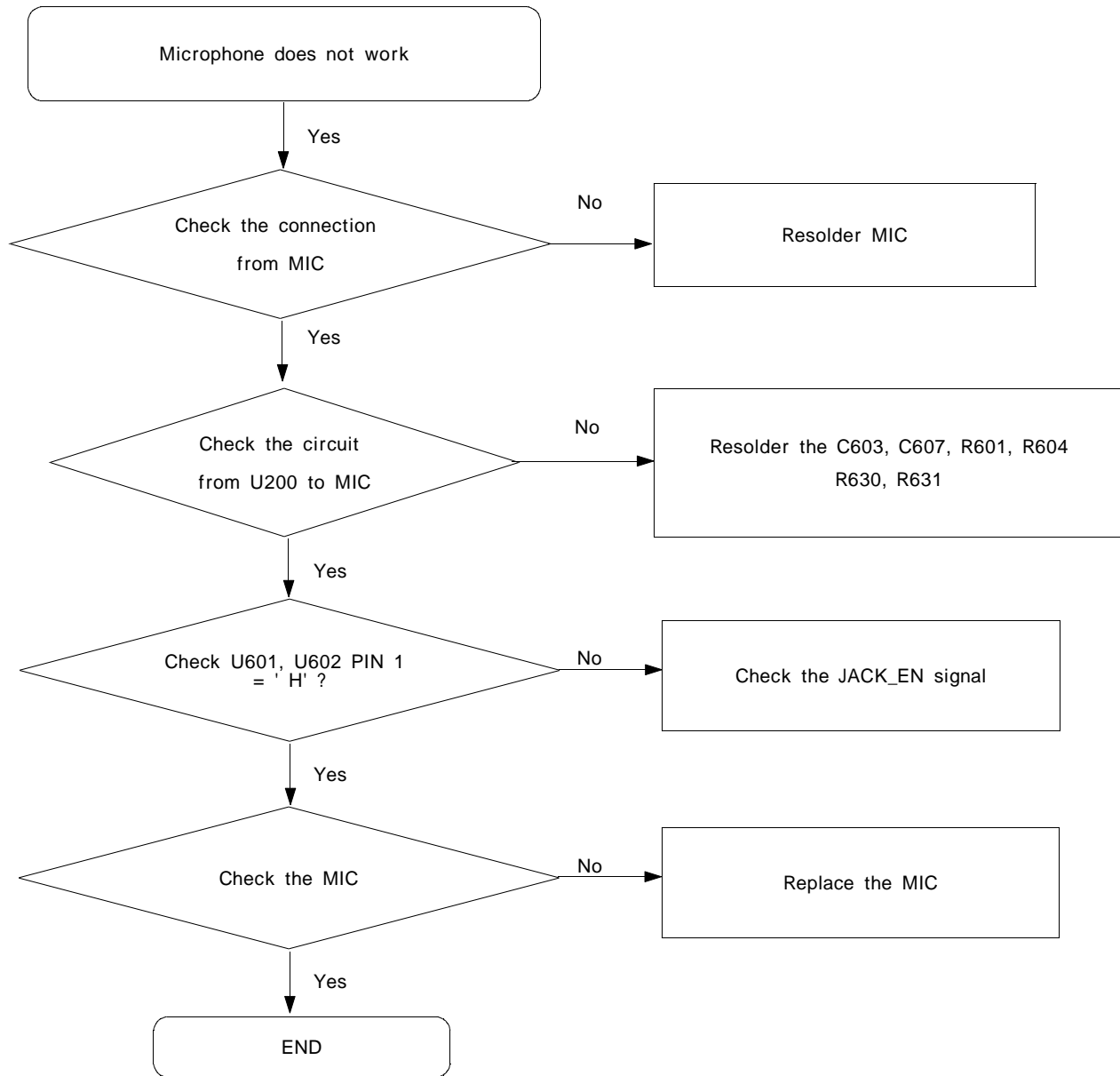


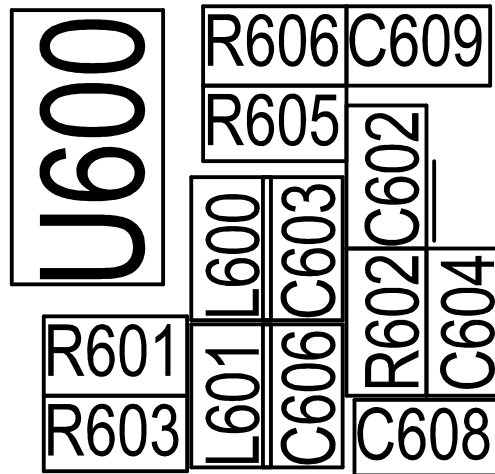
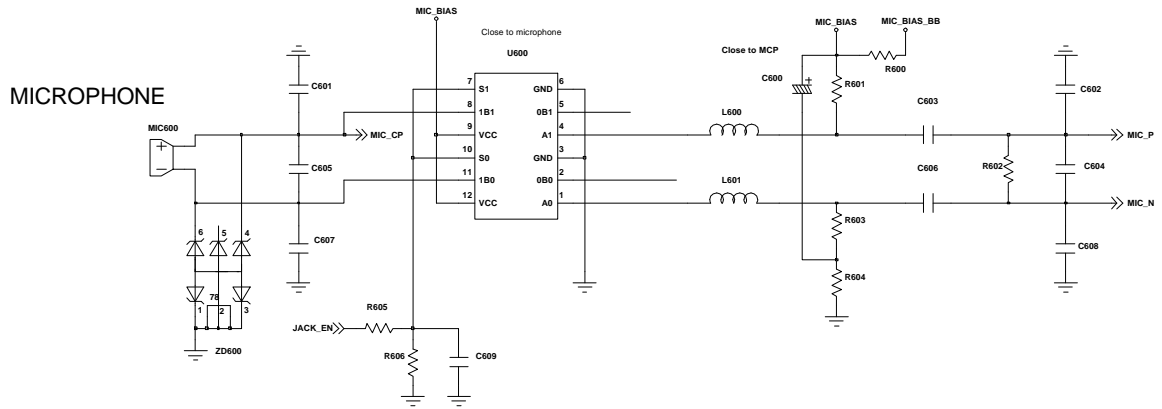
7-4. Sim Part



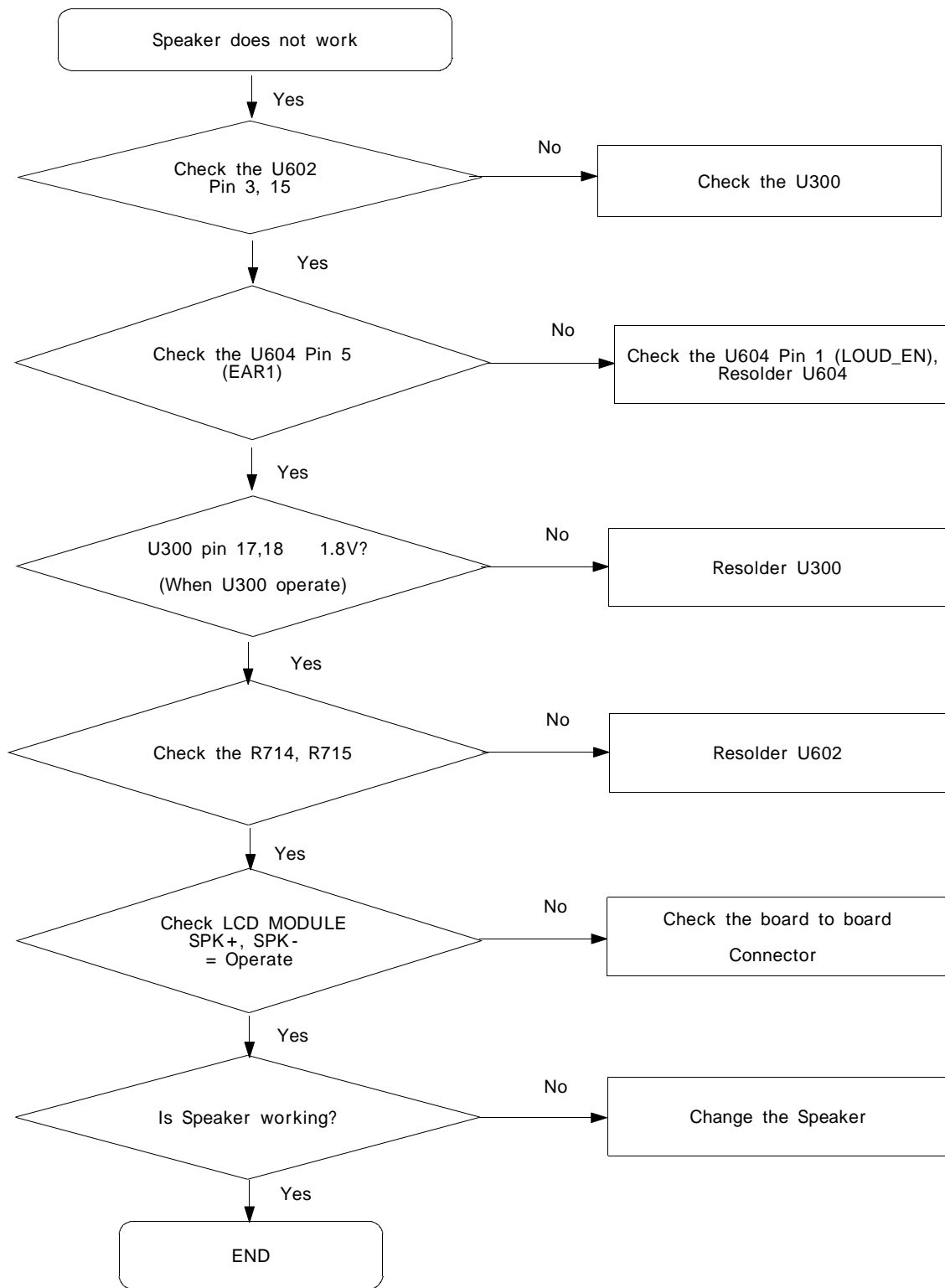


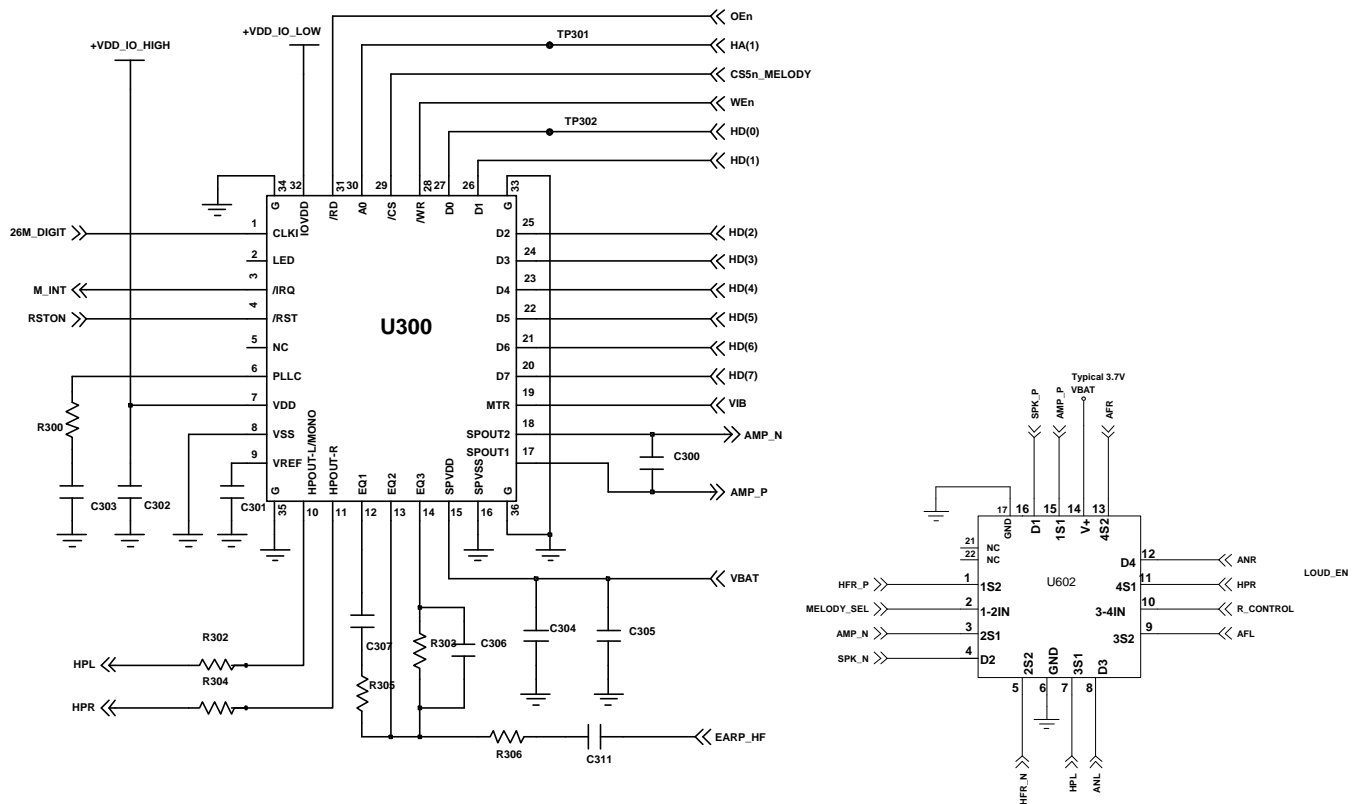
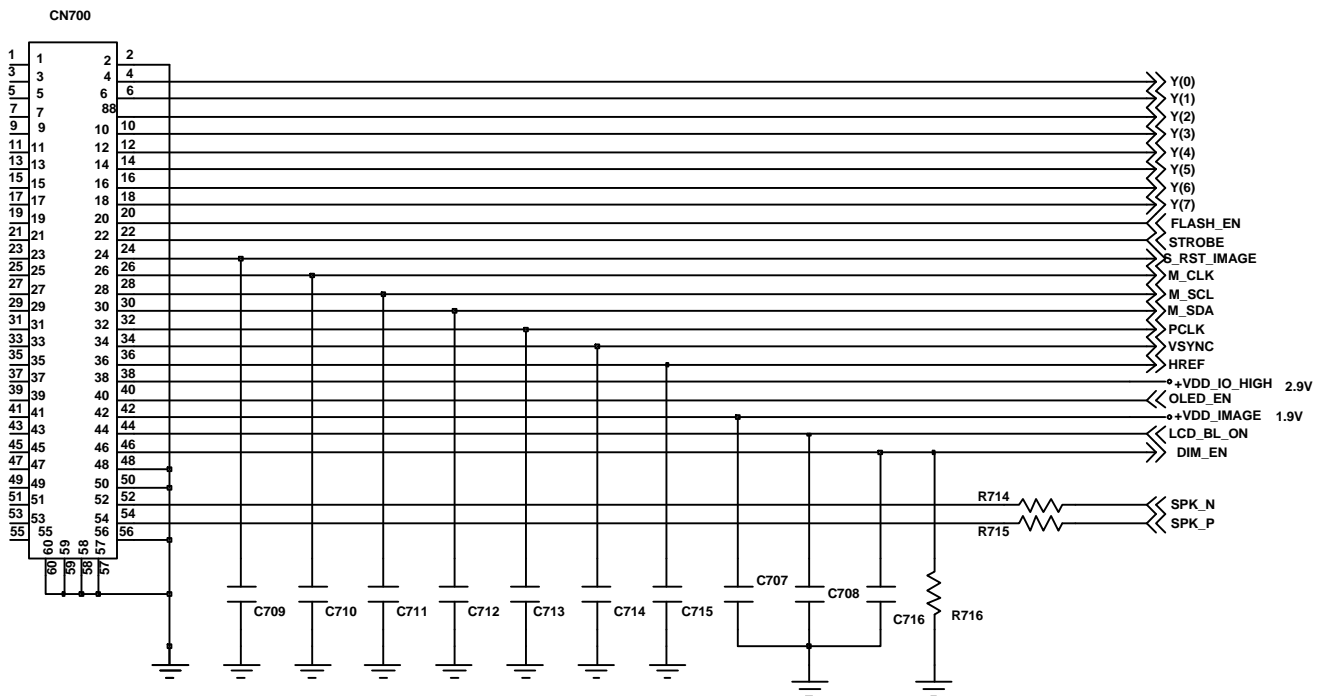
7-5. Microphone Part



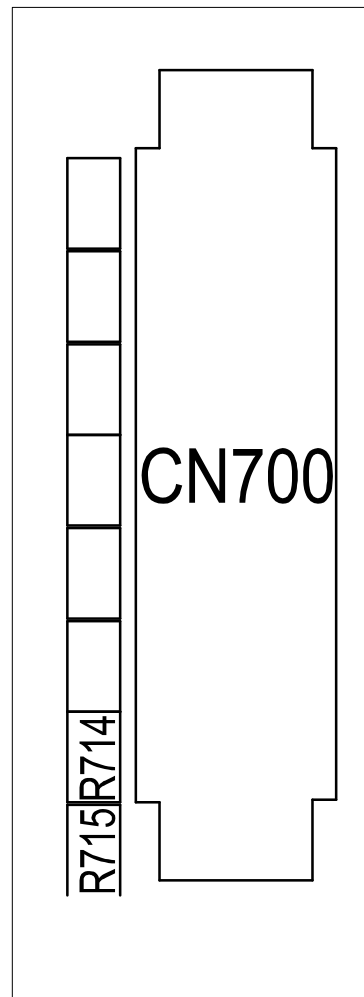
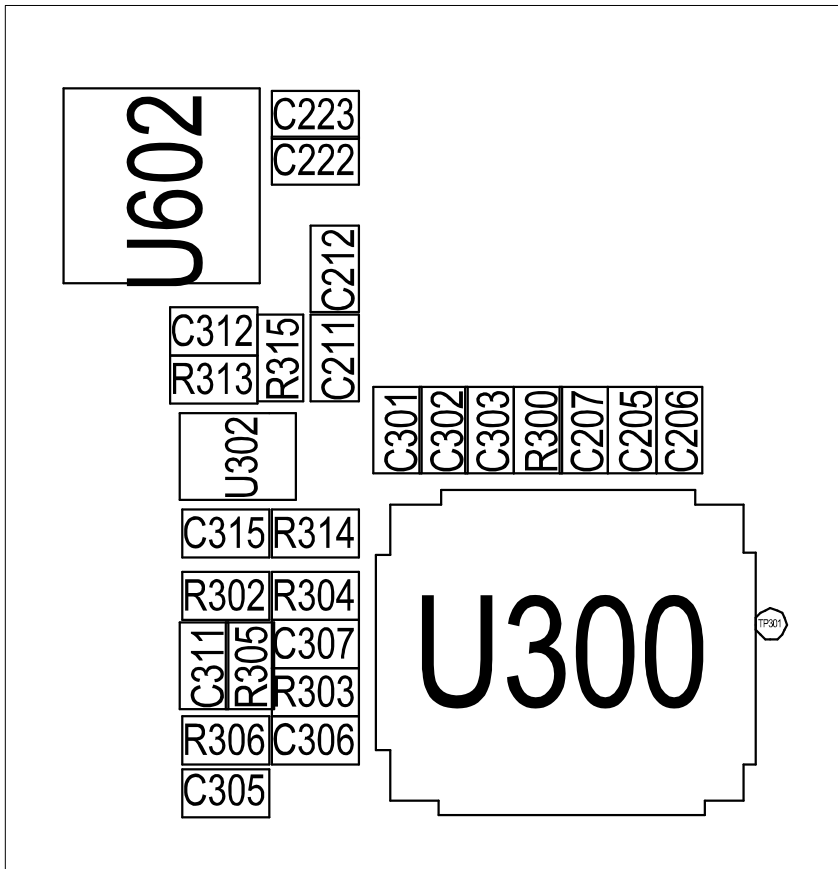


7-6. Speaker Part(Melody)

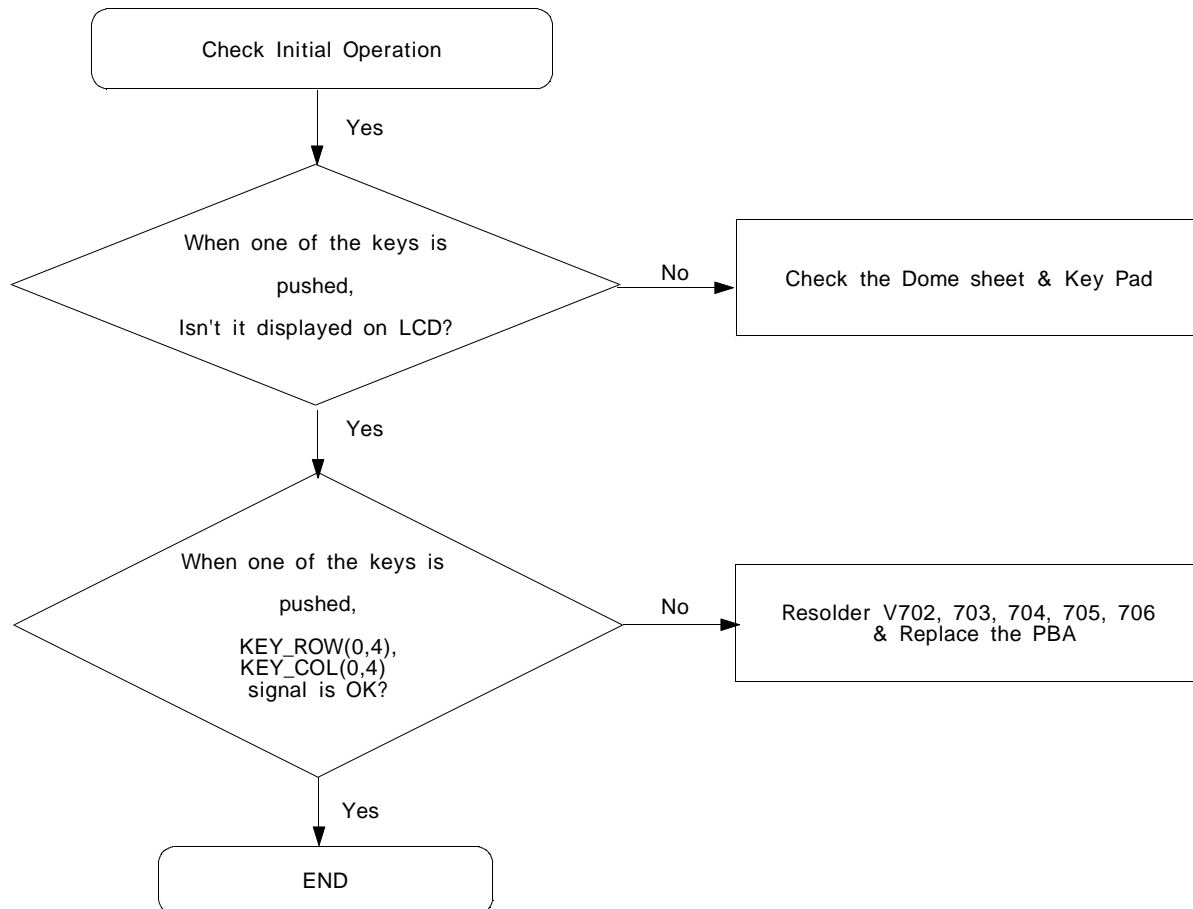


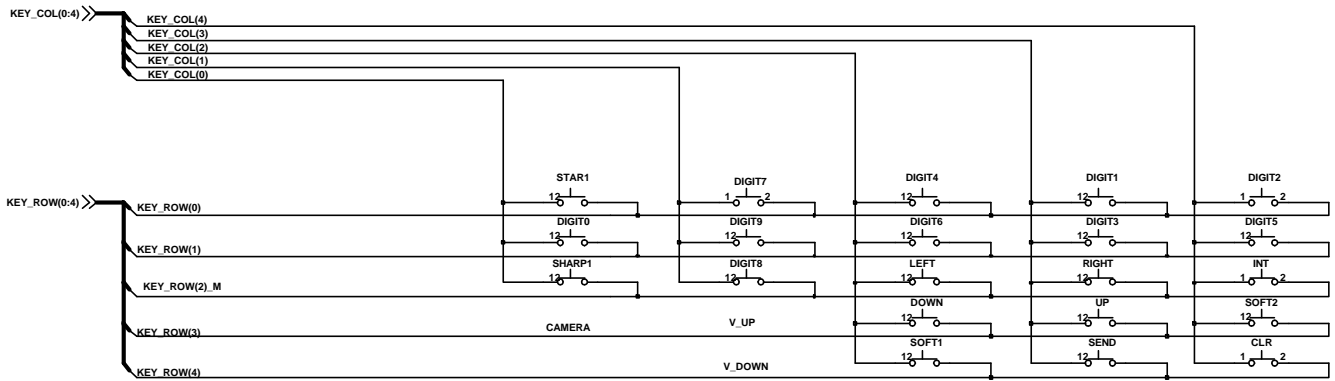


MELODY IC

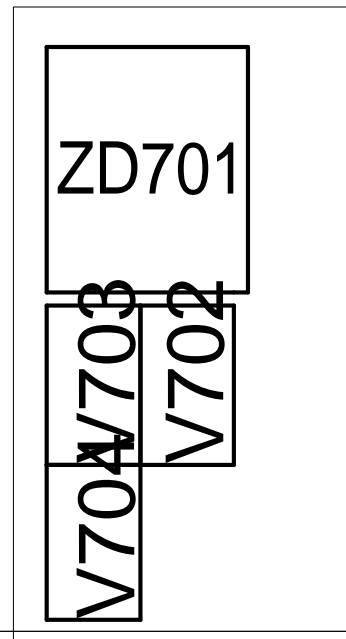
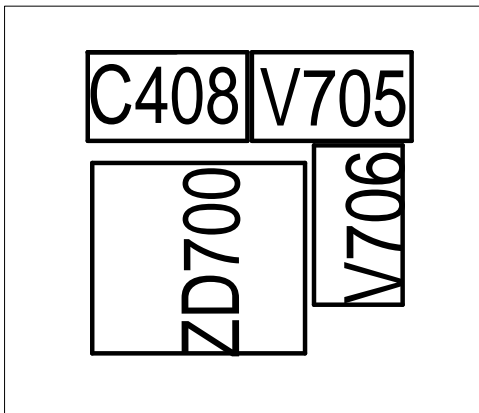
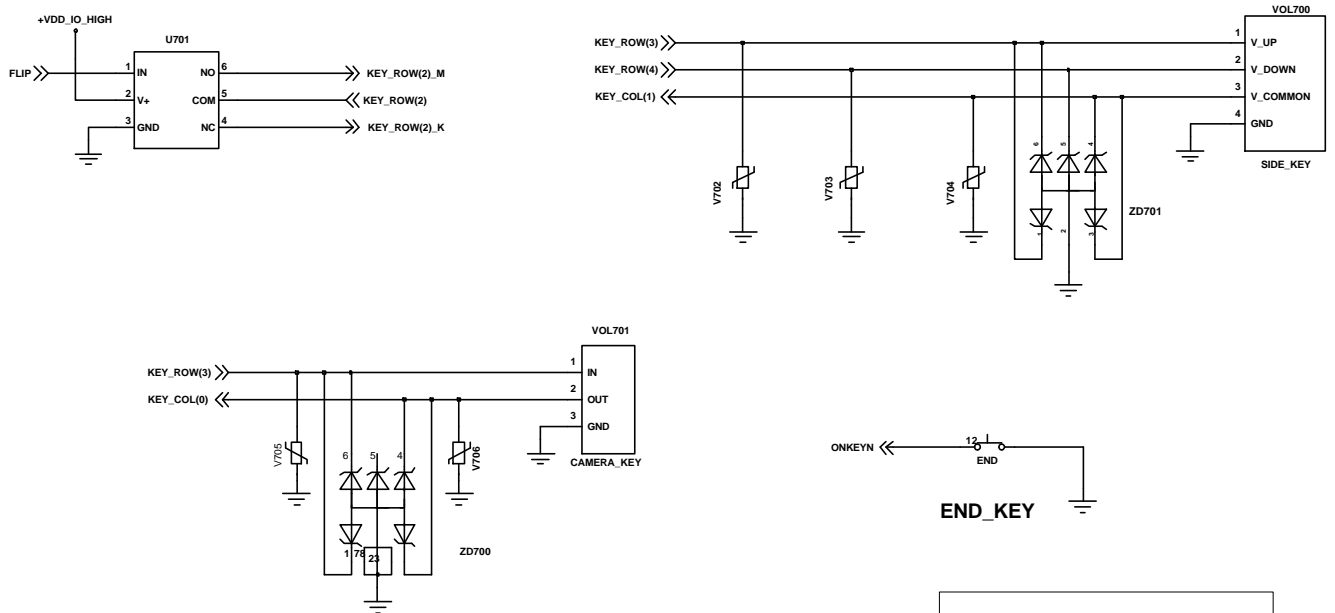


7-7. Key Data Input

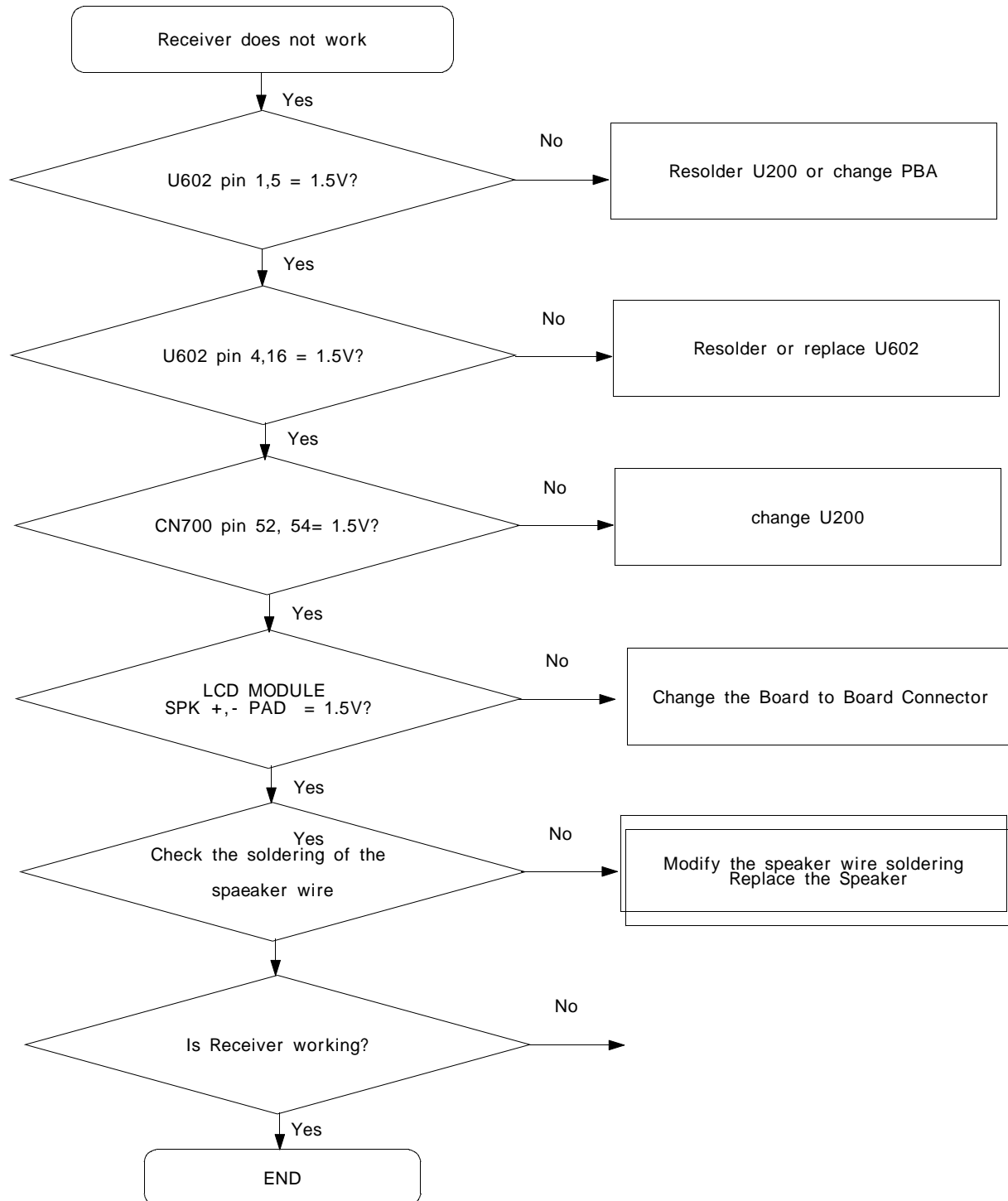


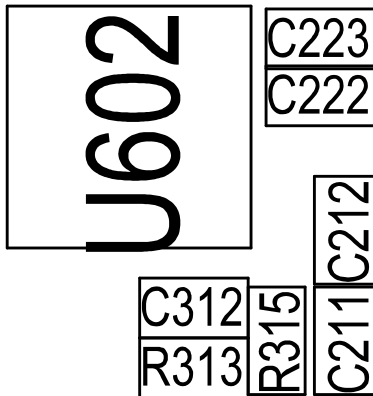
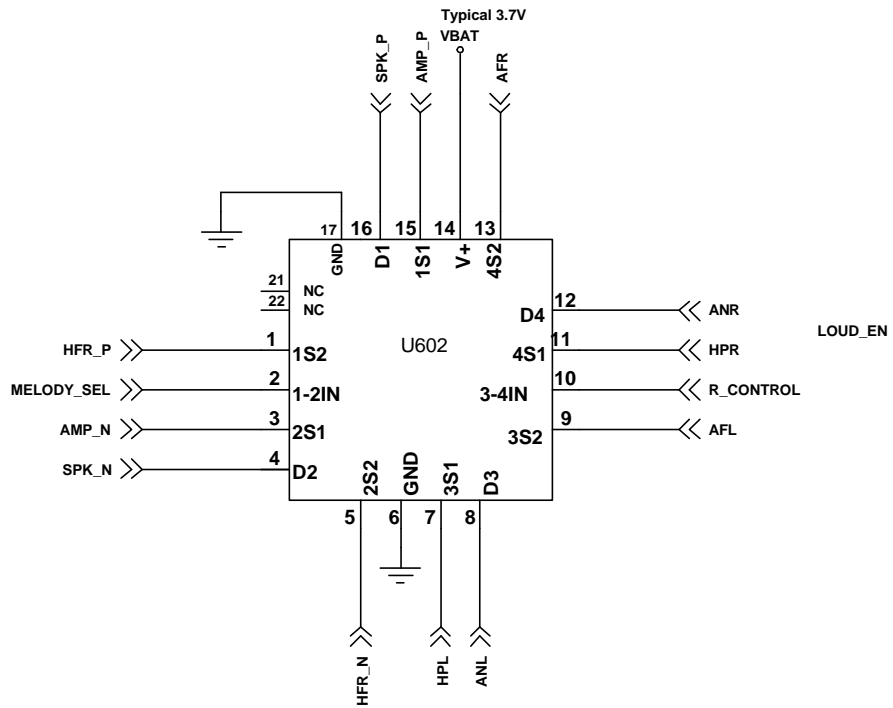


KEY_MAP

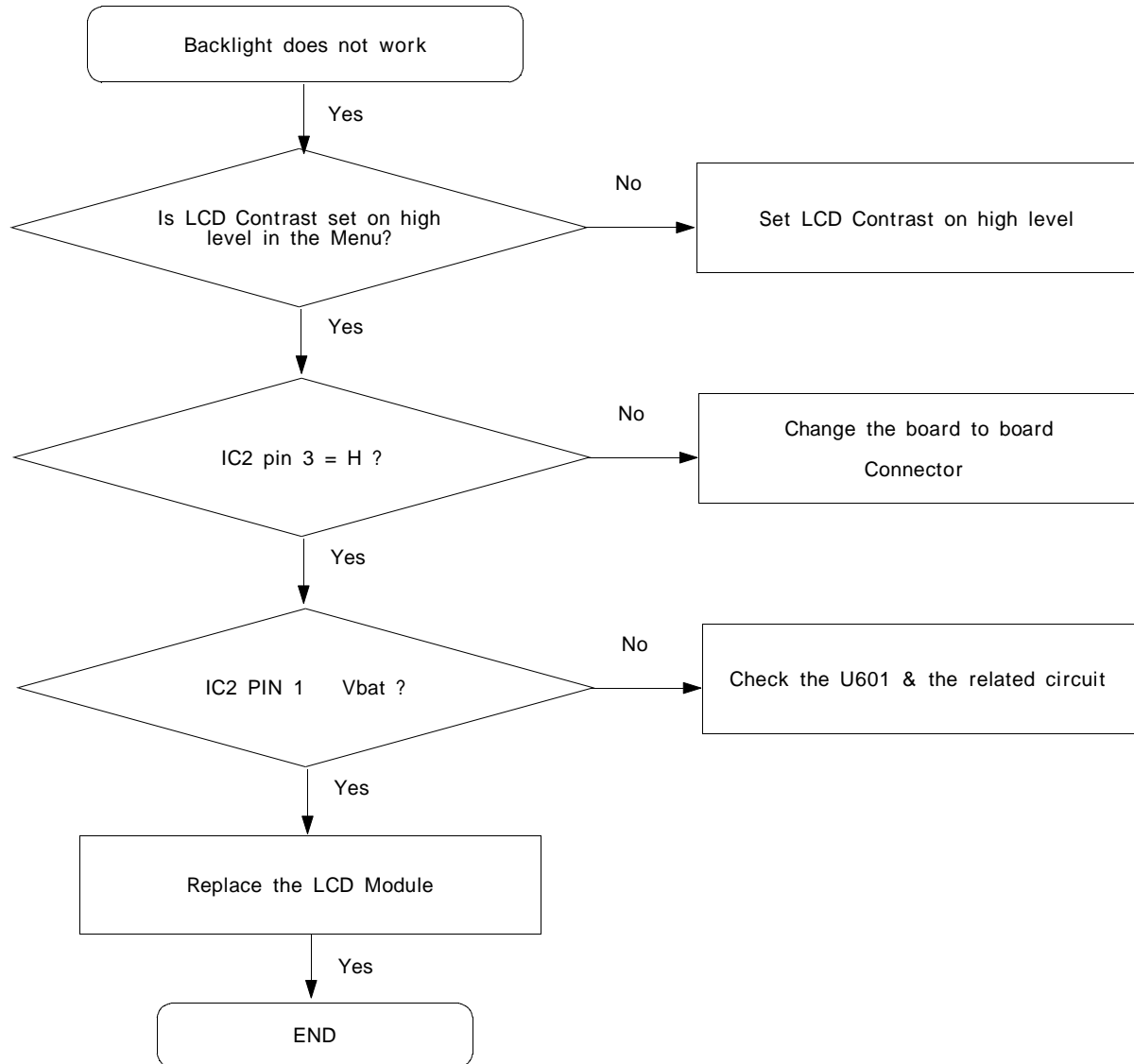


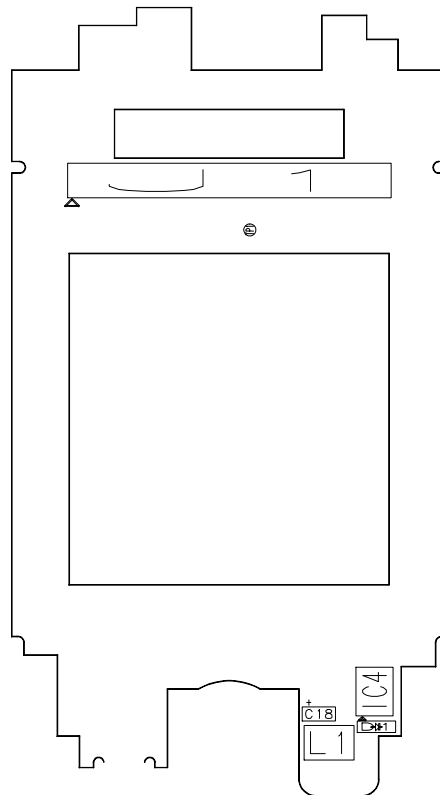
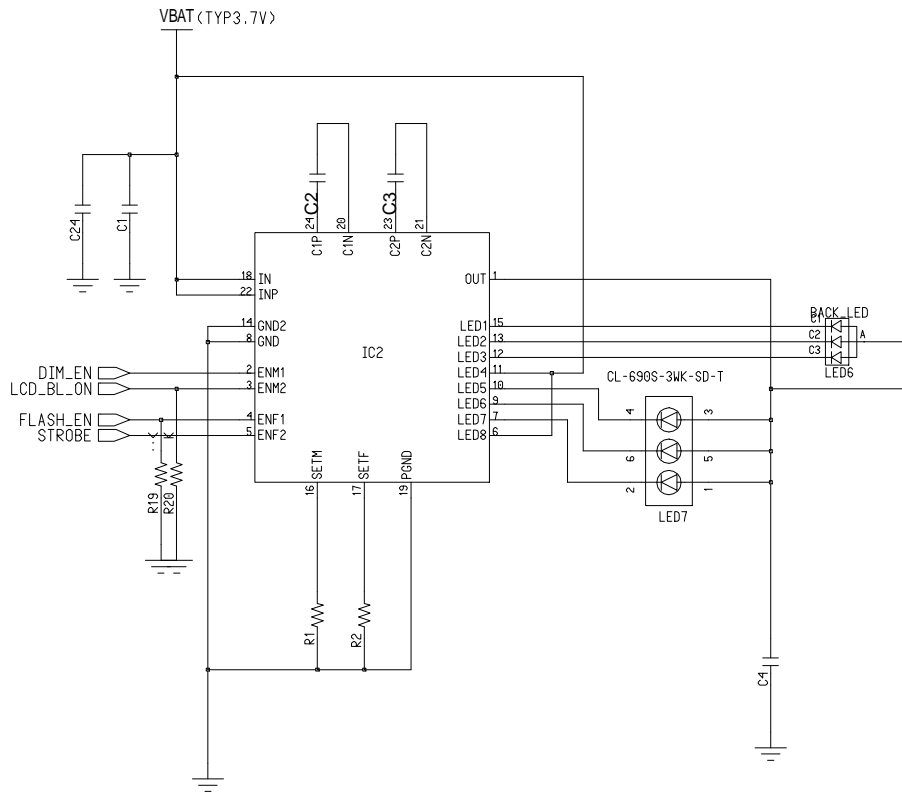
7-8. Receiver Part



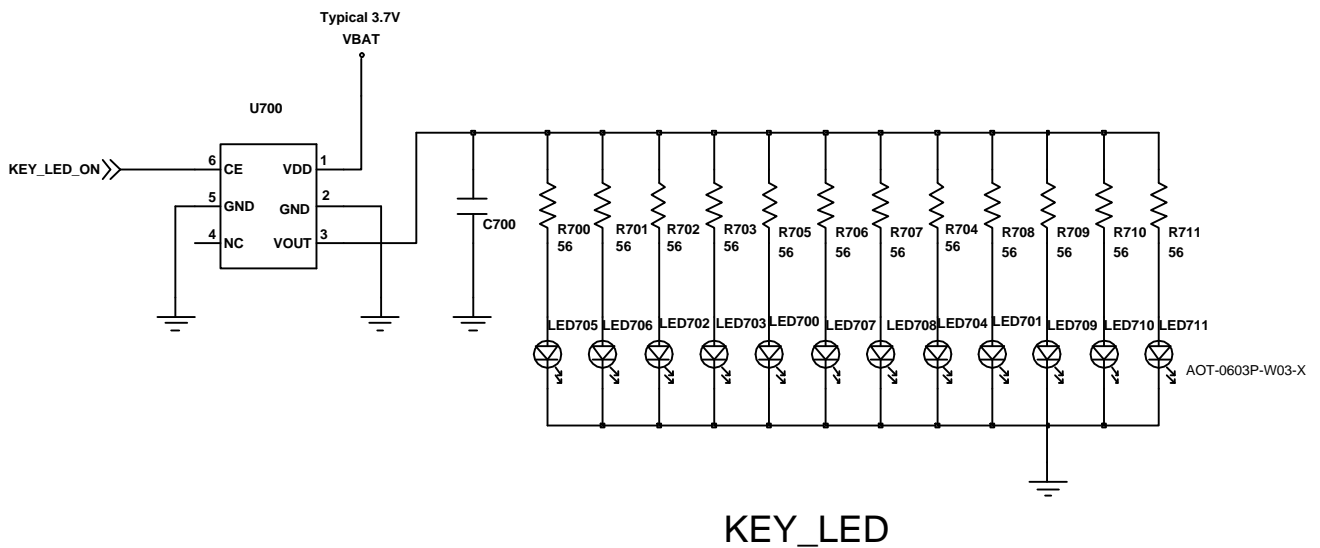
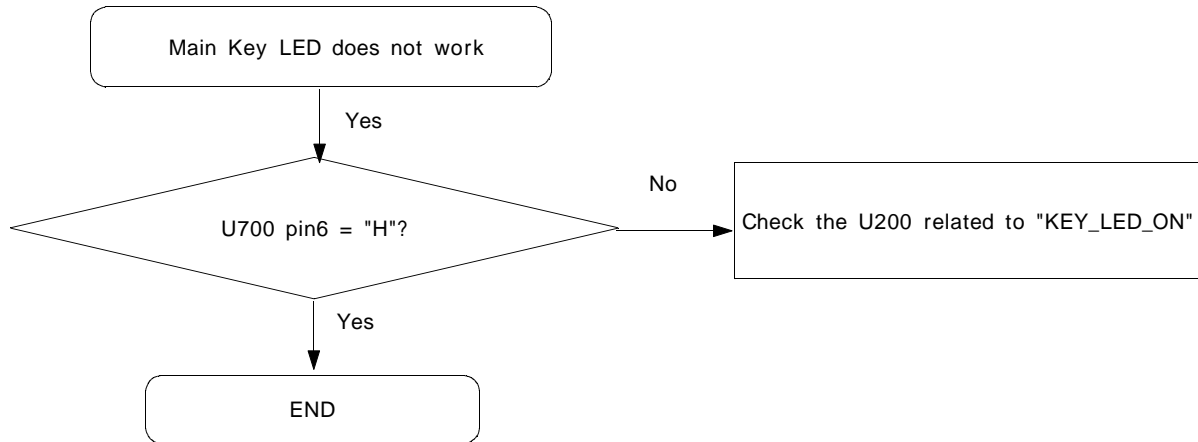


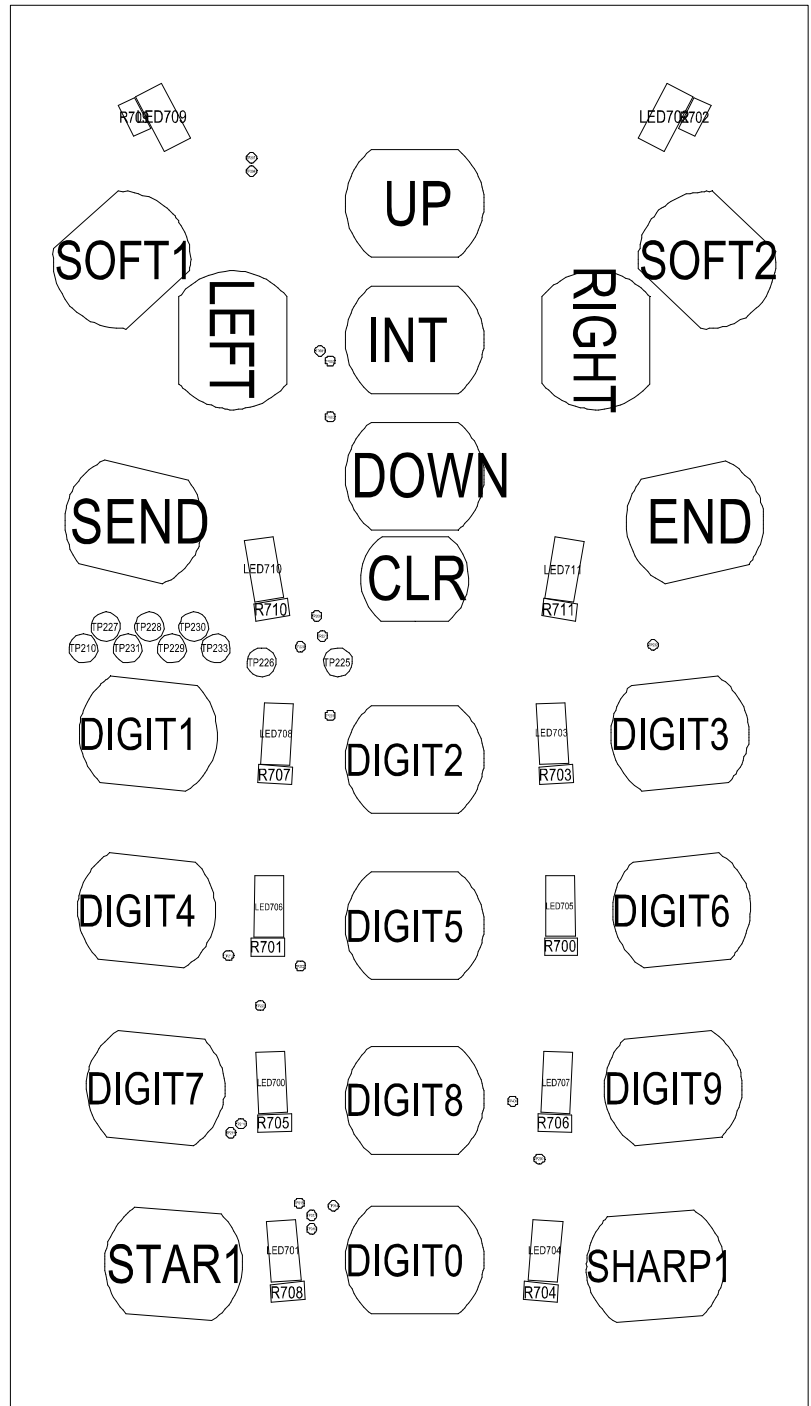
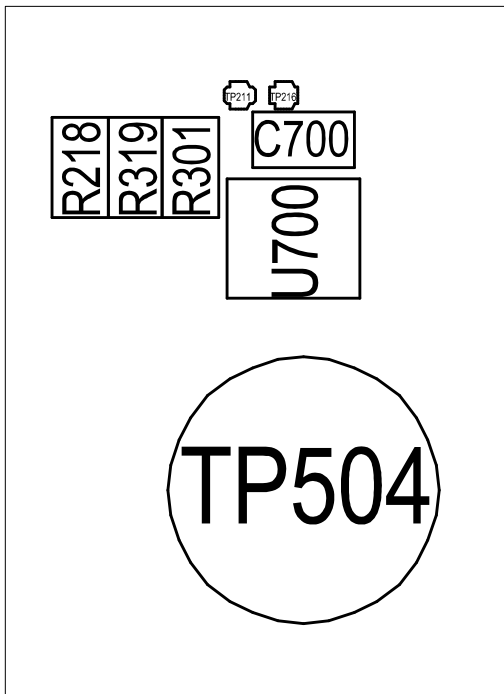
7-9. Back Light (for Color Main LCD)



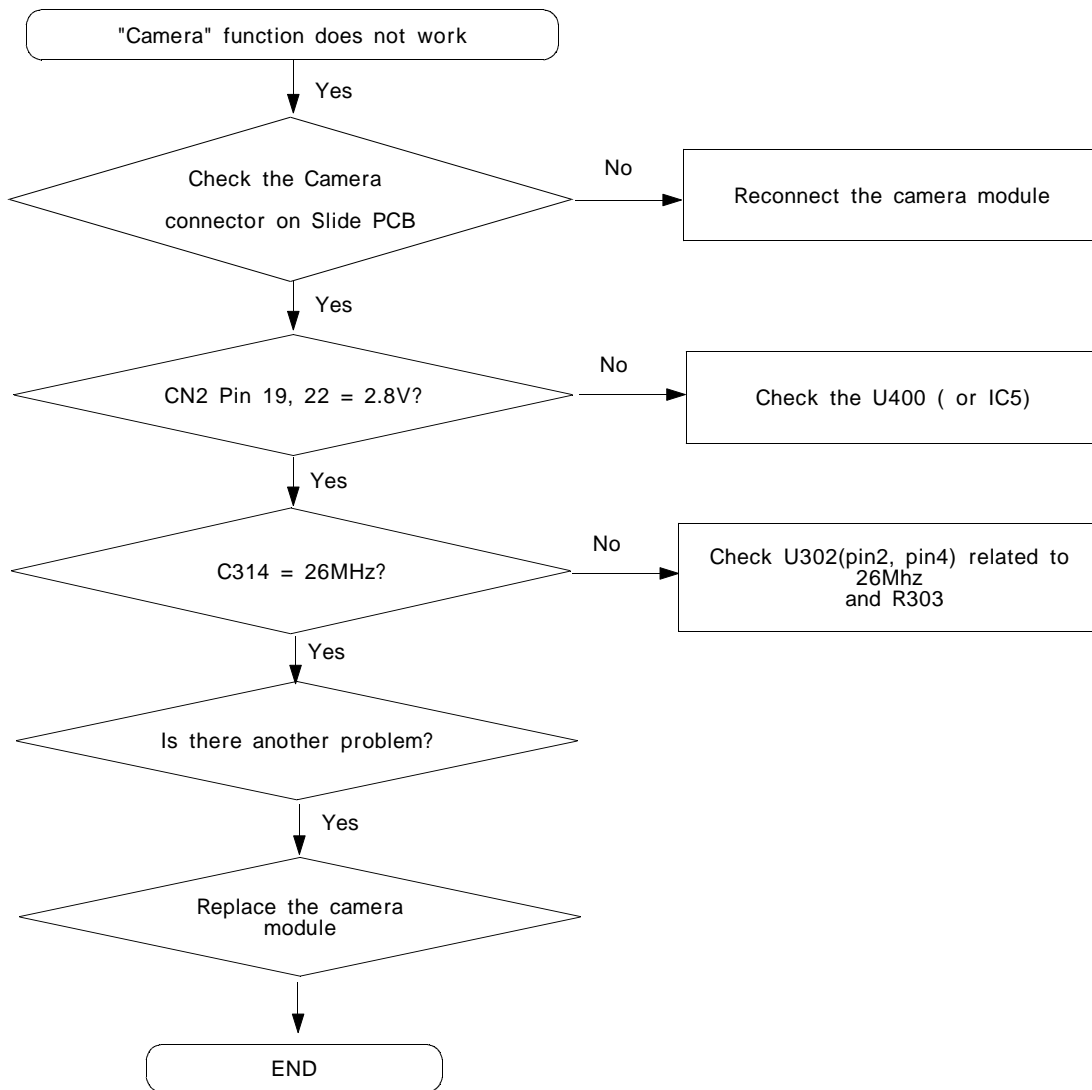


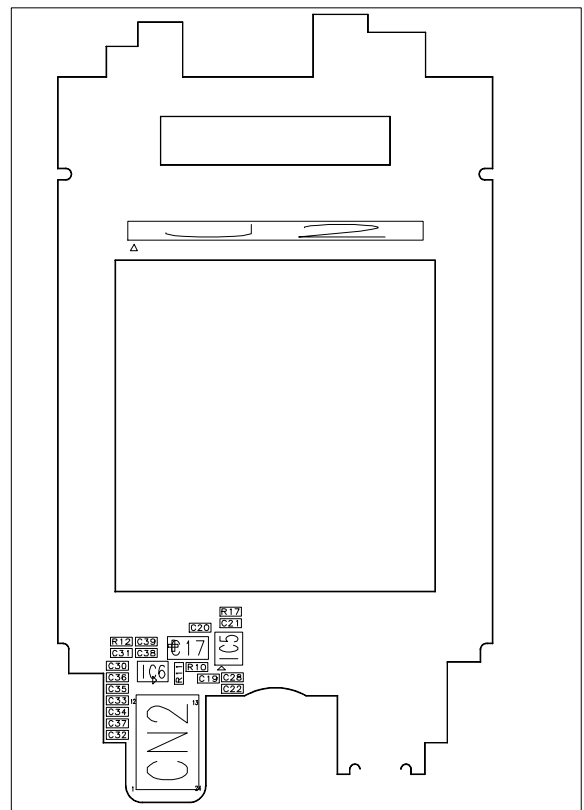
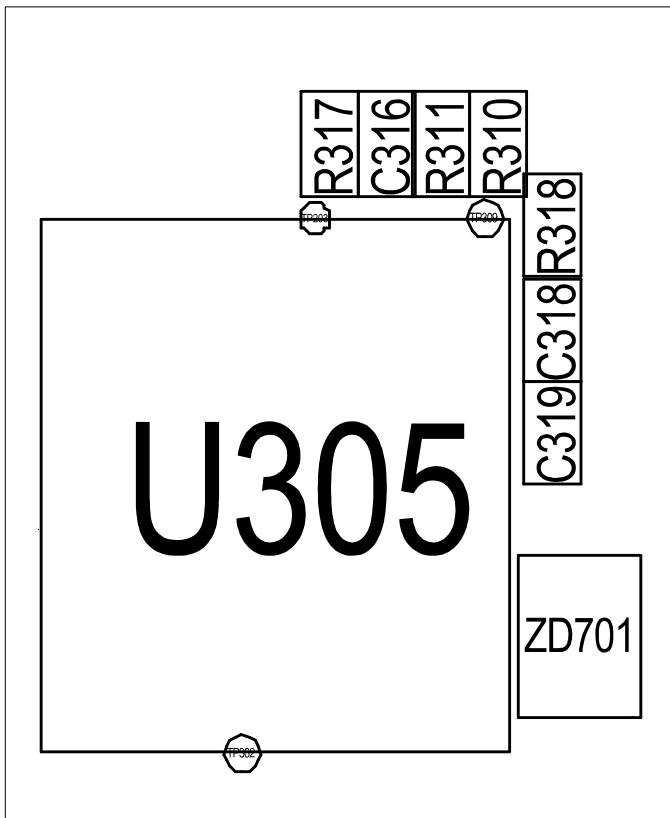
7-10. Key Back Light



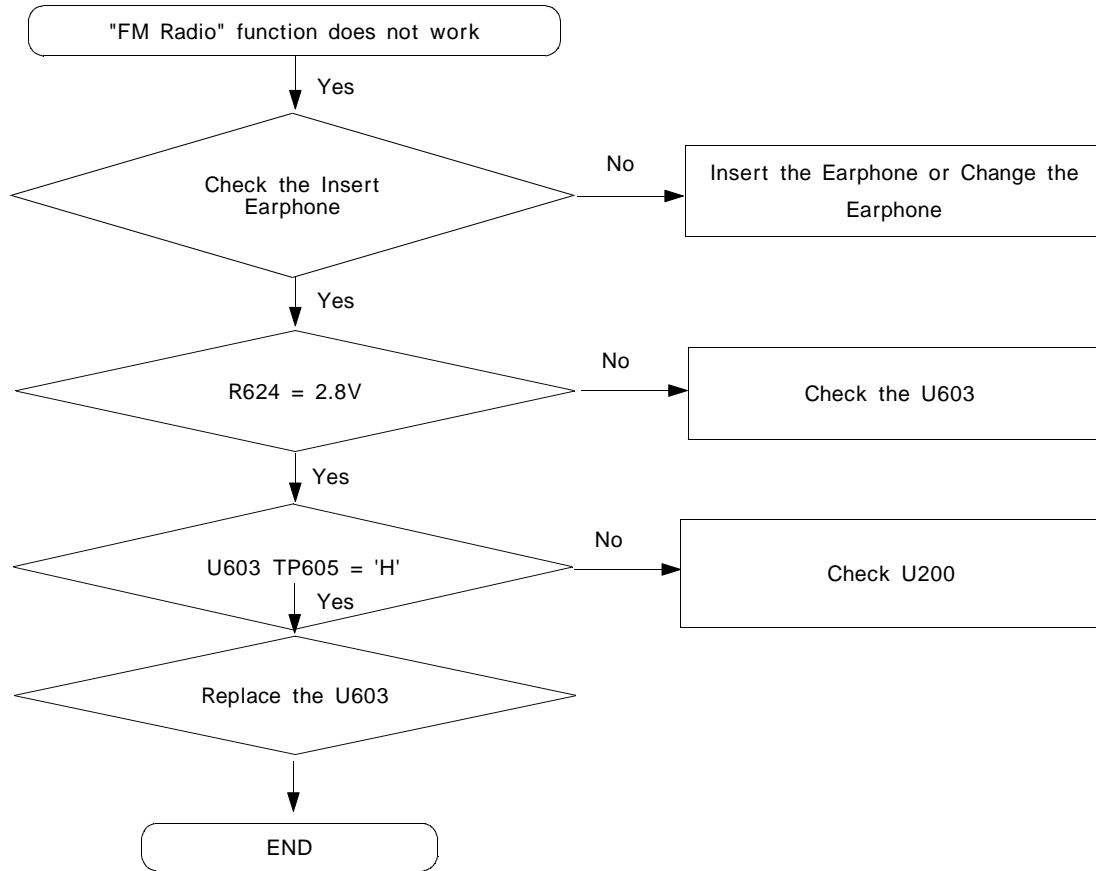


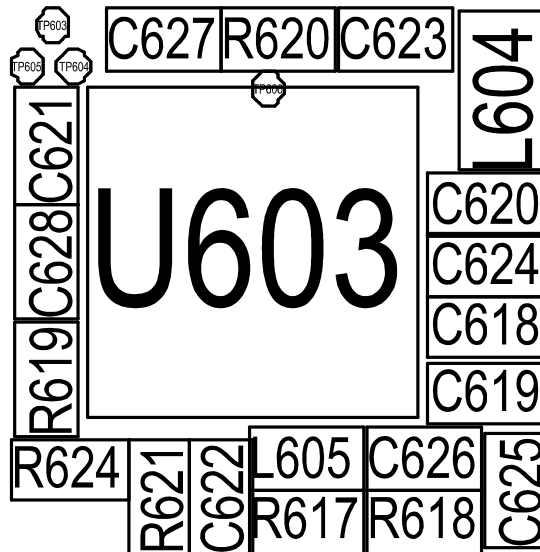
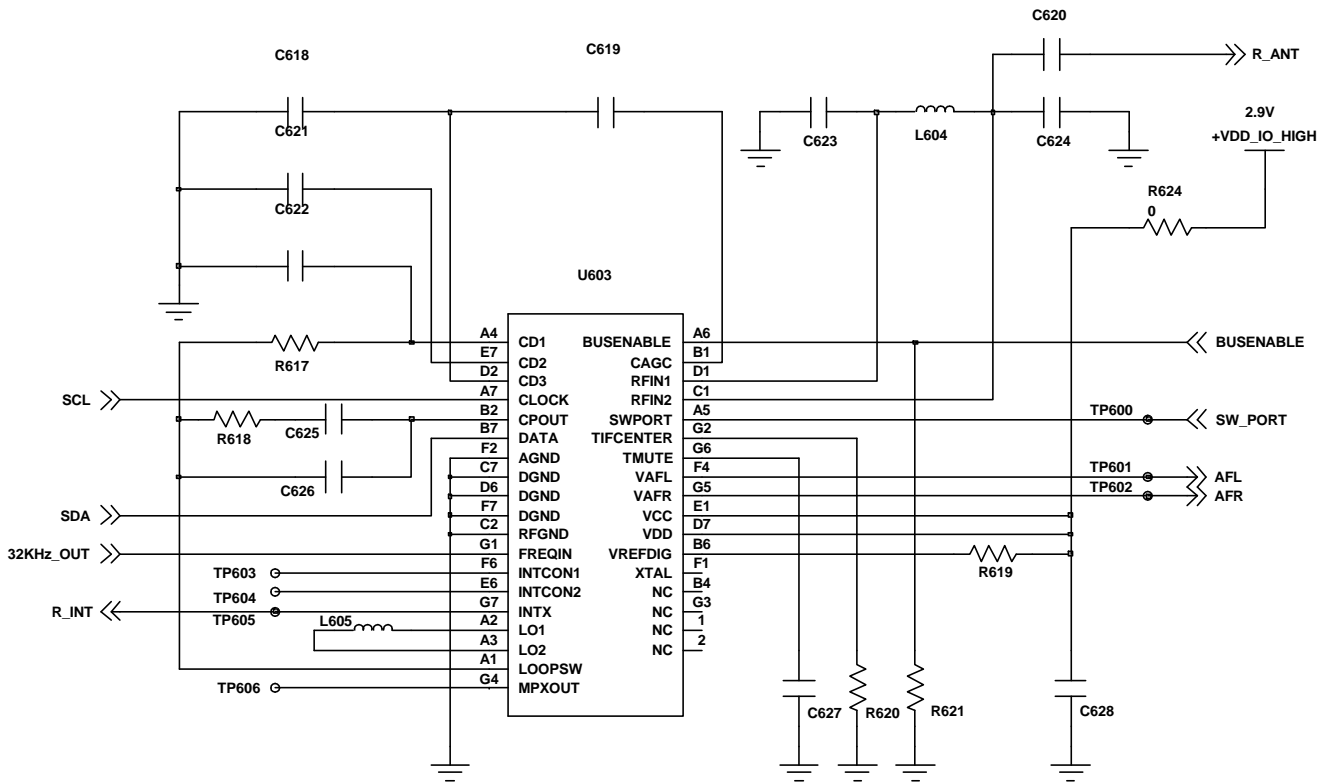
7-11. Camera part



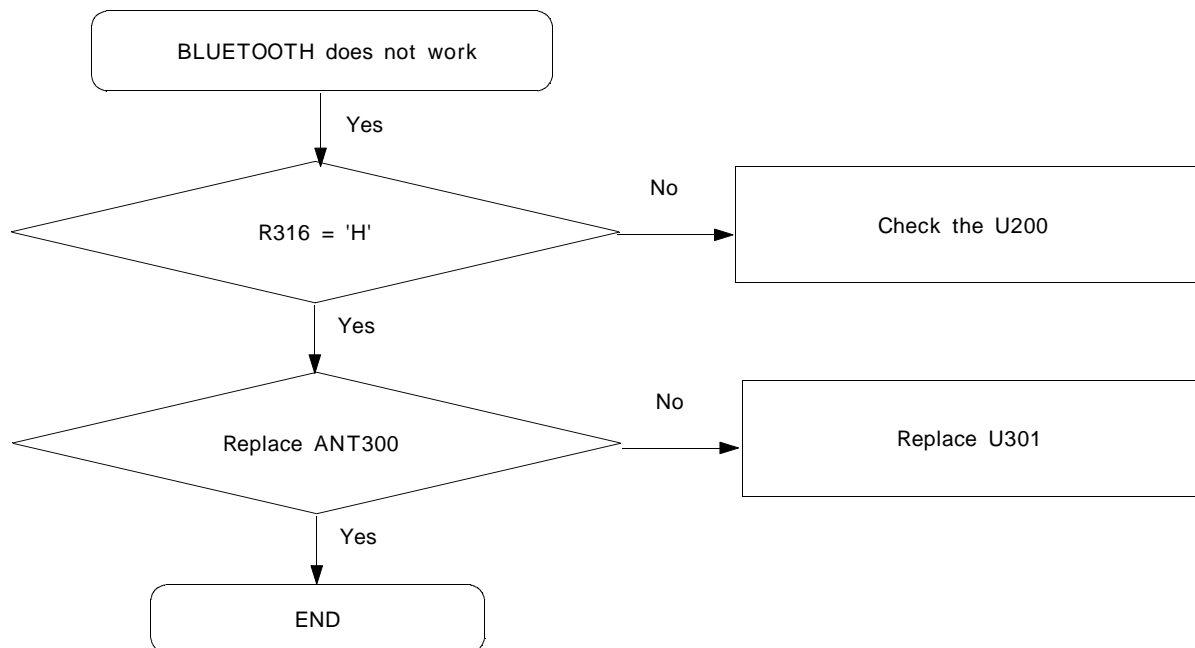


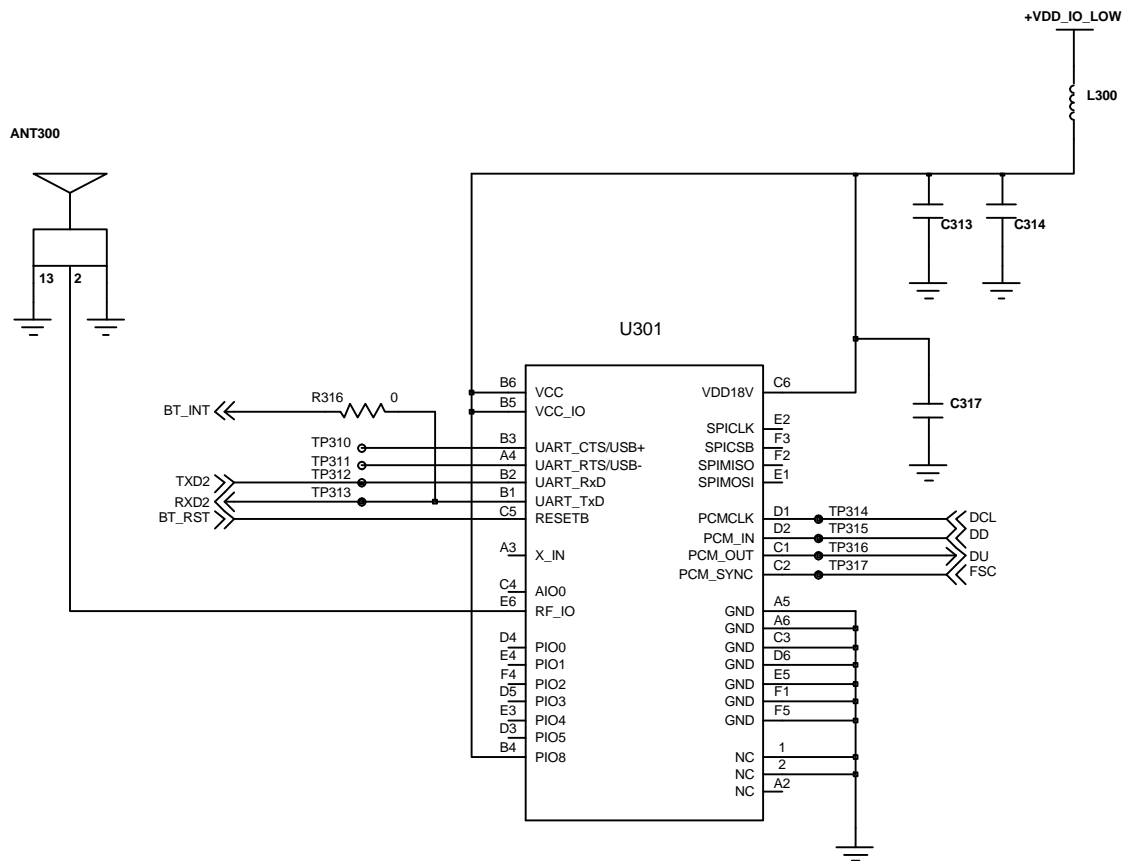
7-12. FM RADIO



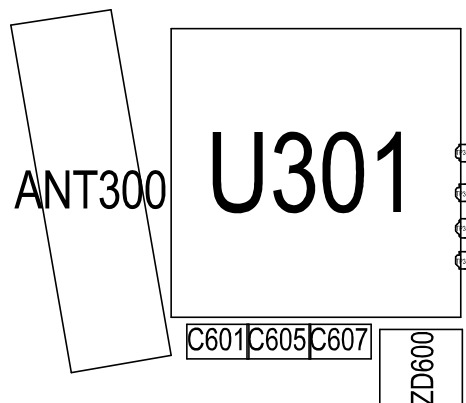


7-13. BLUETOOTH

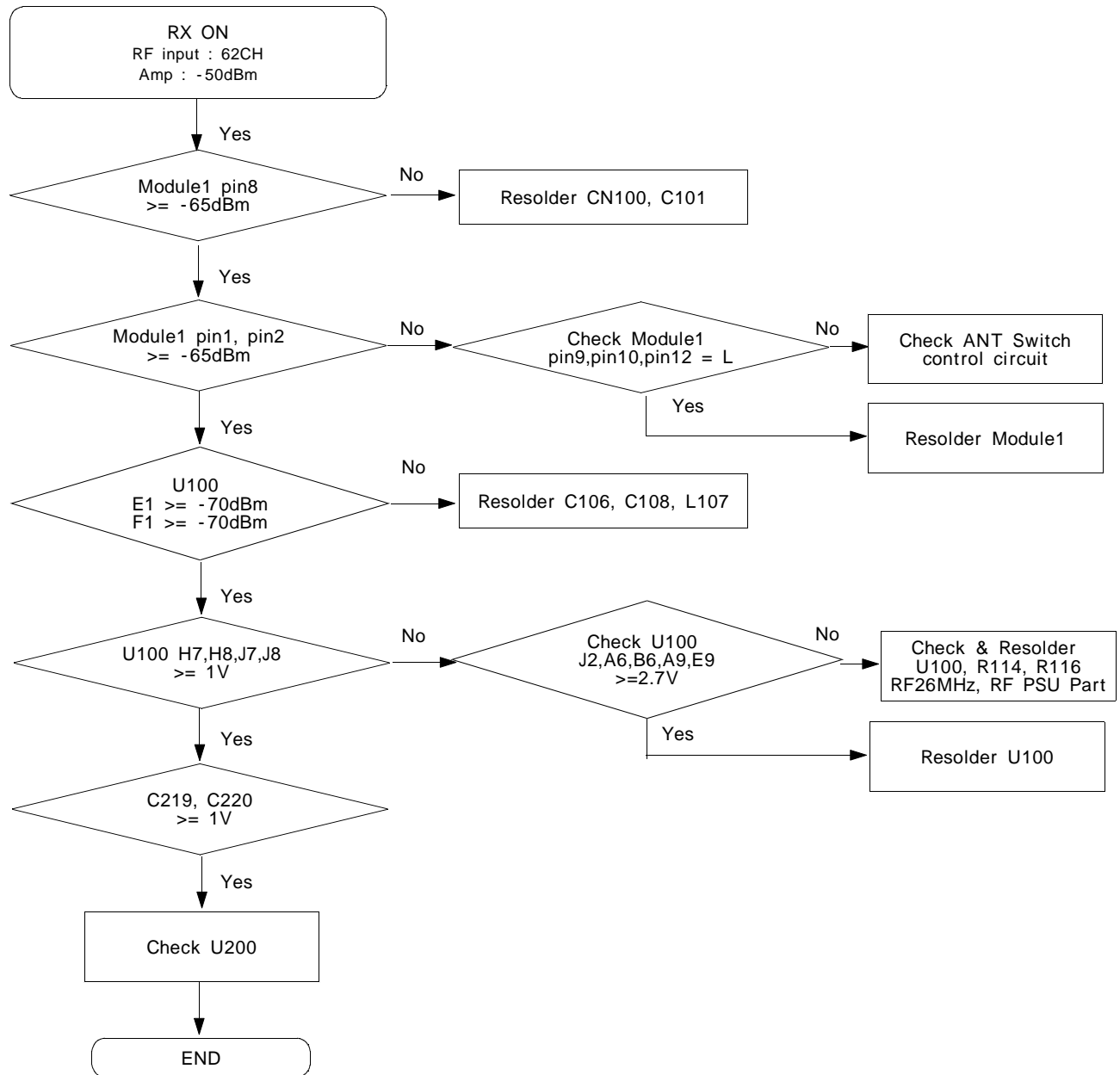




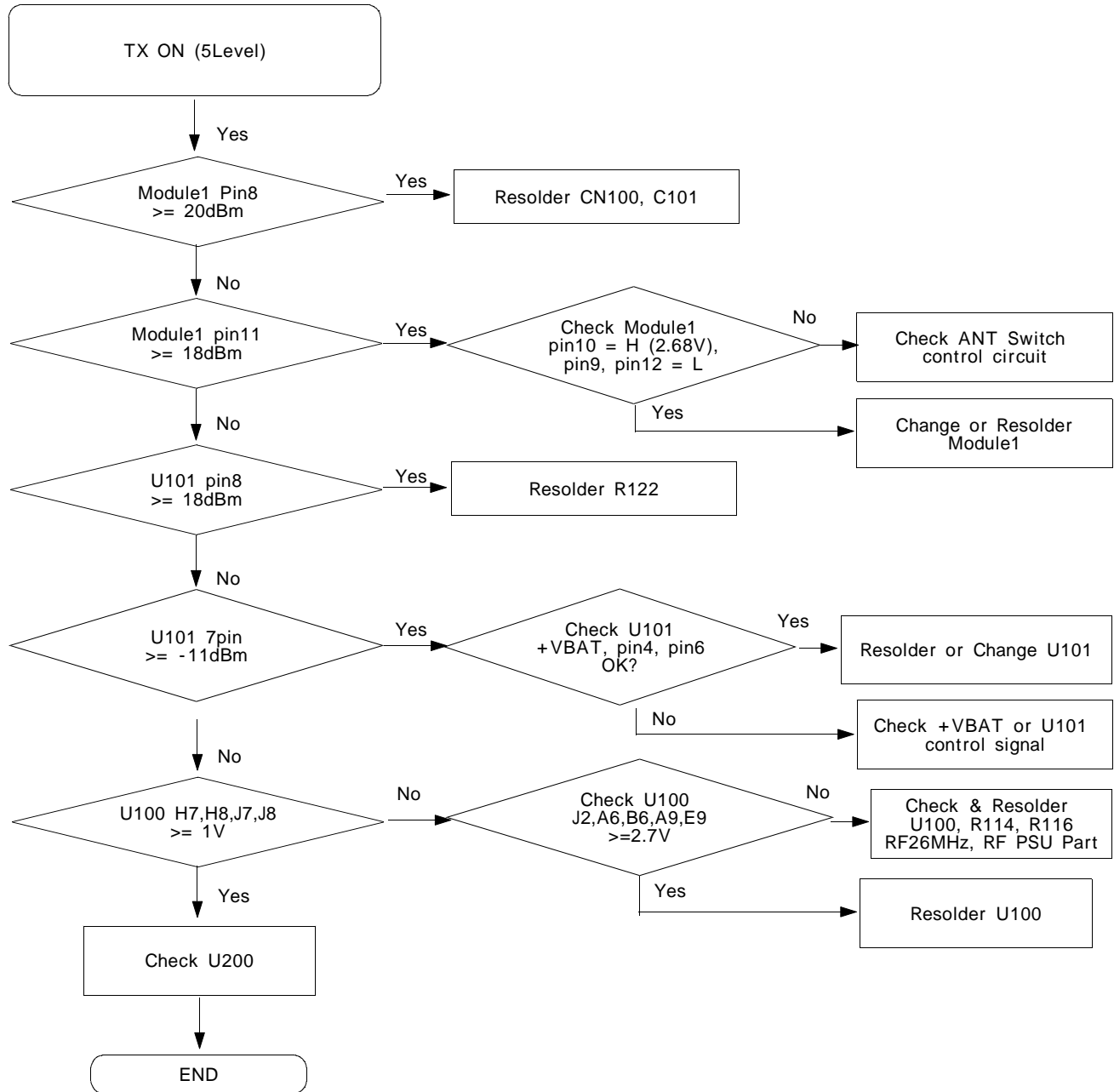
BLUE TOOTH



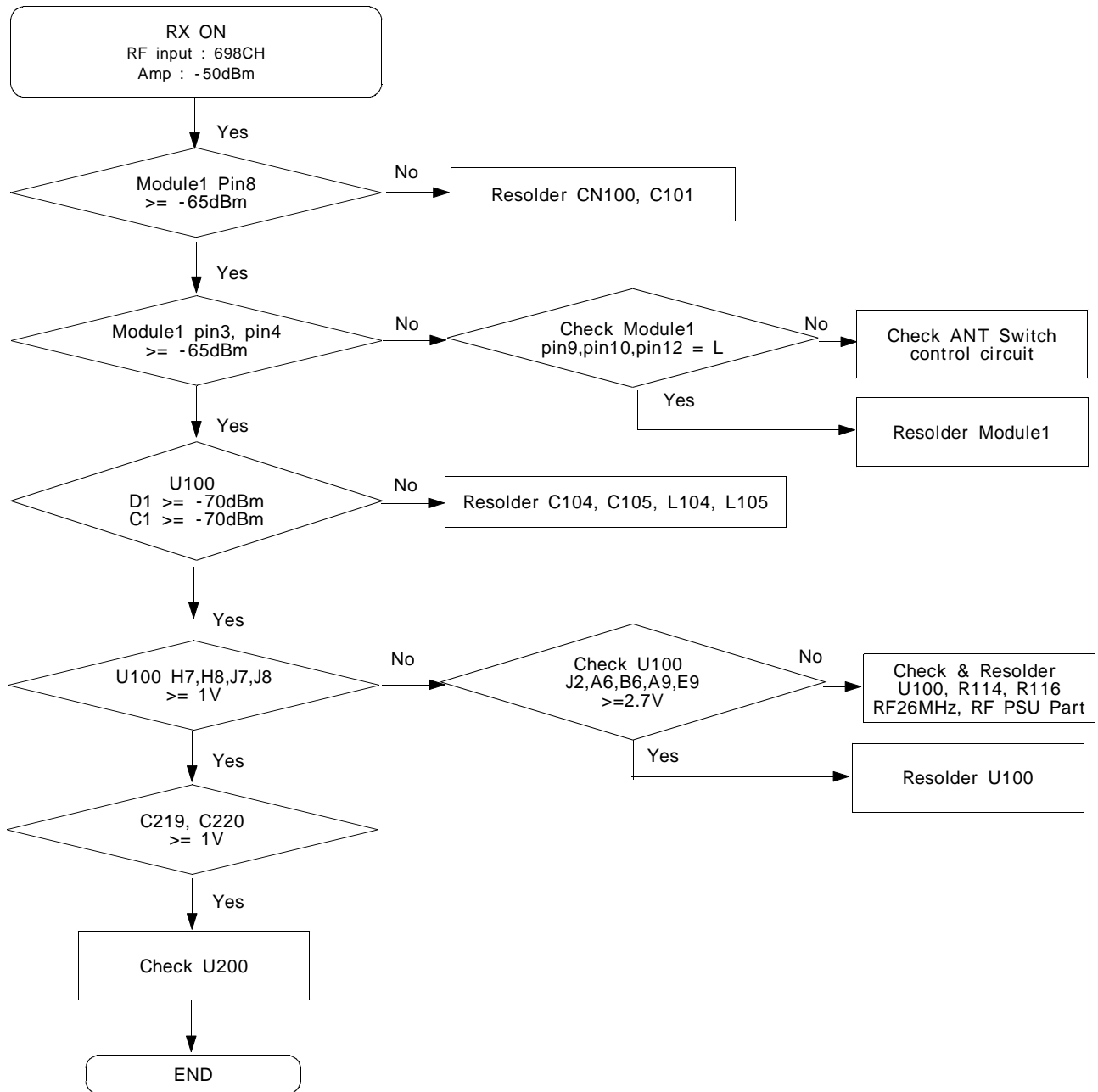
7-14. GSM Receiver



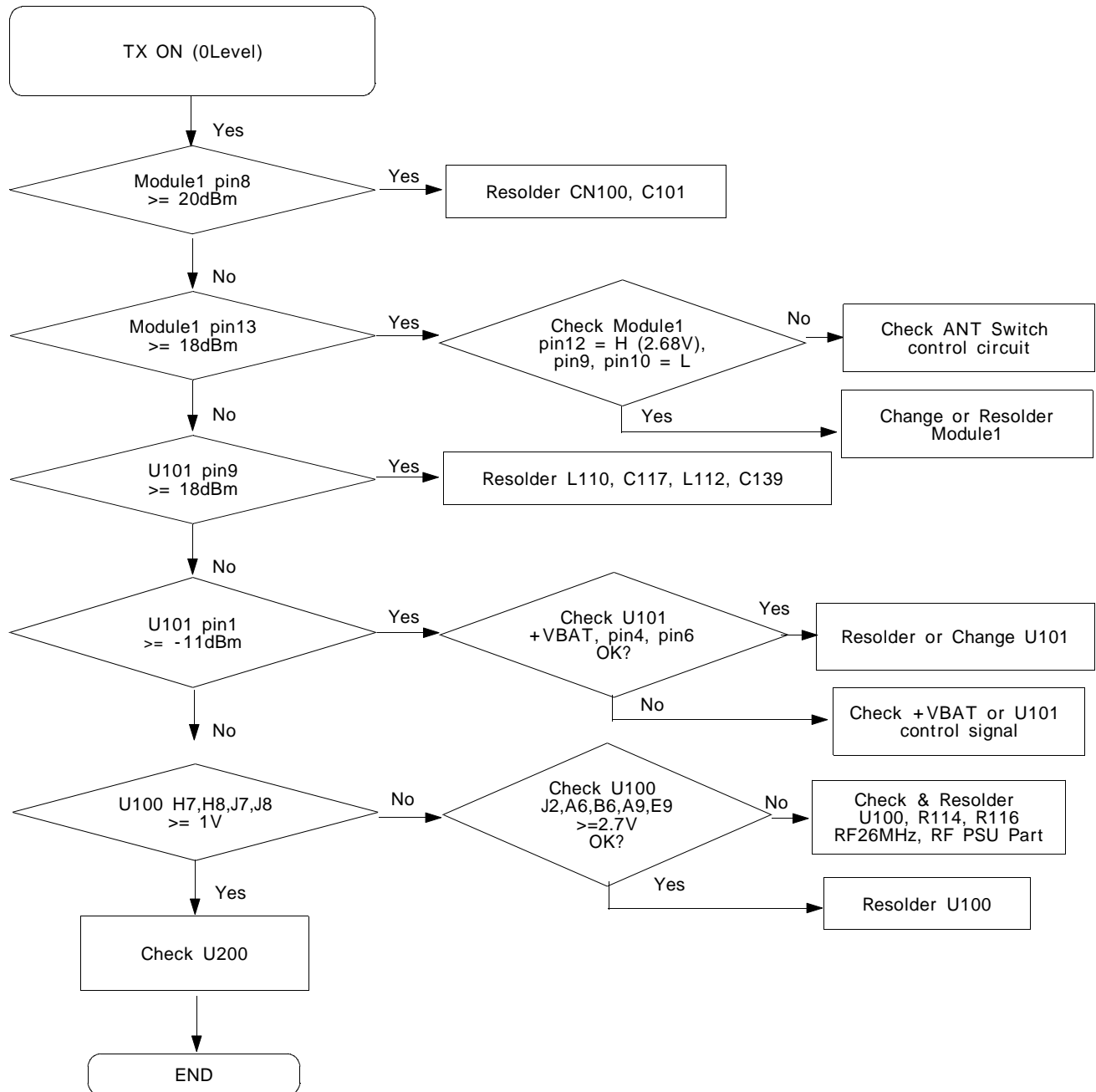
7-15. GSM Transmitter



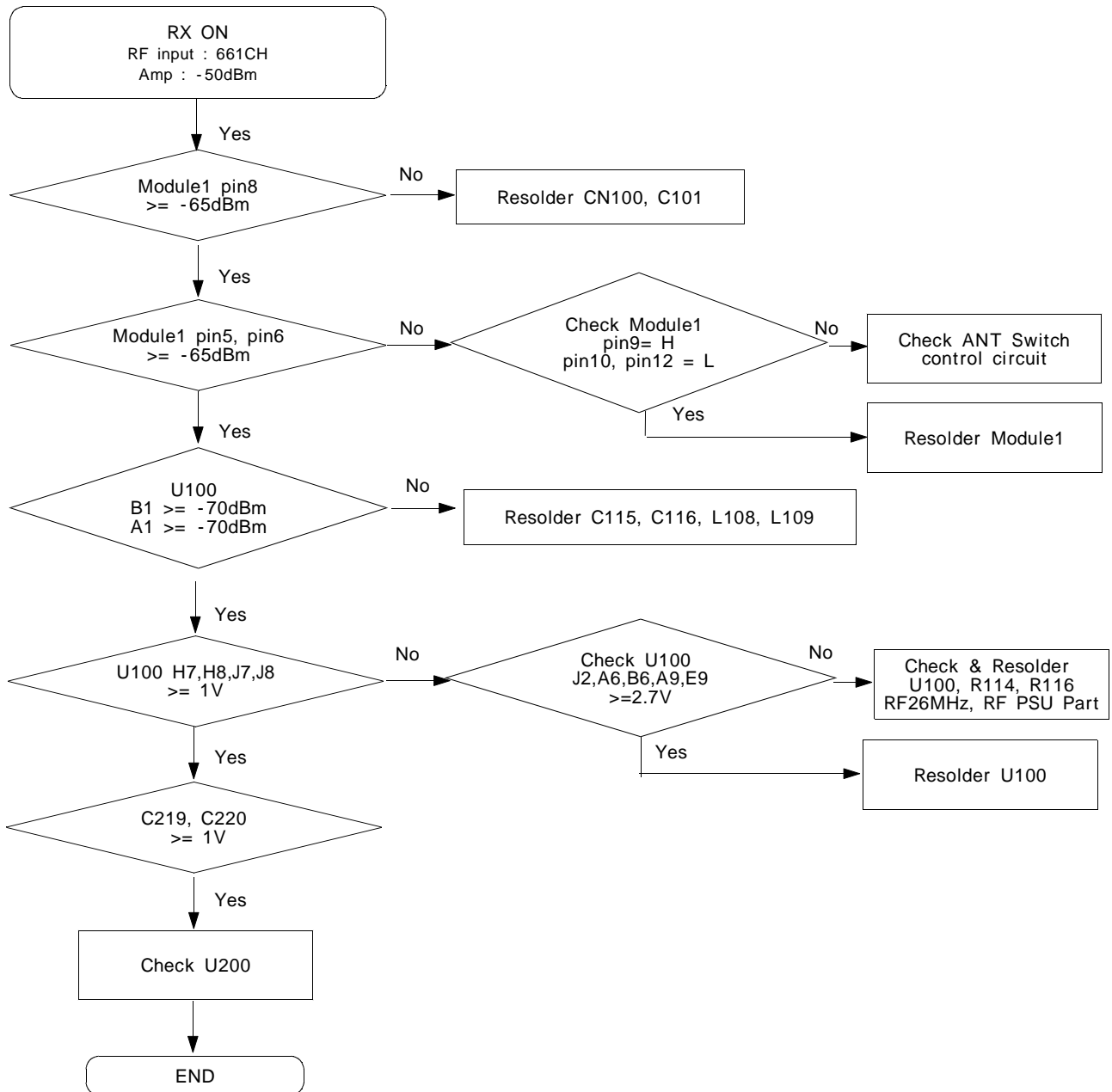
7-16. DCS Receiver



7-17. DCS Transmitter



7-18. PCS Receiver



7-19. PCS Transmitter

